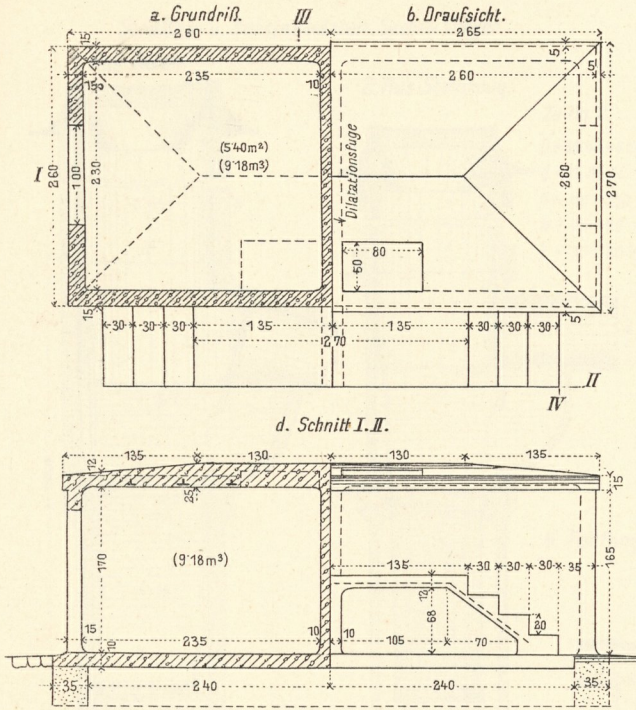
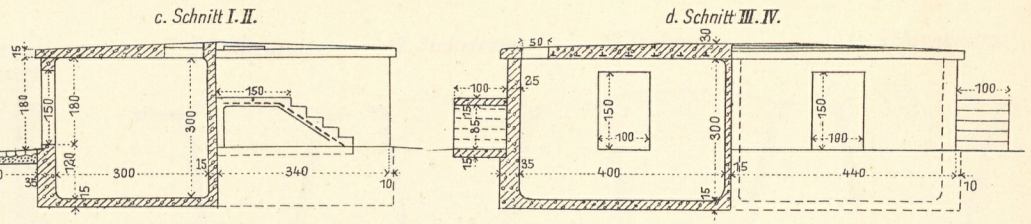


Sammelbehälter für Pferdedünger.

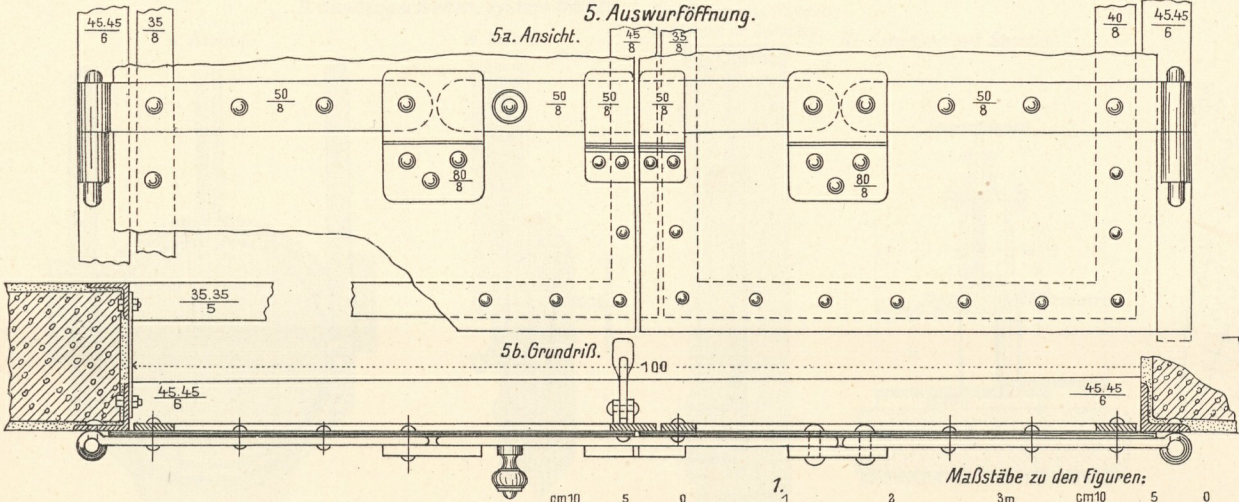
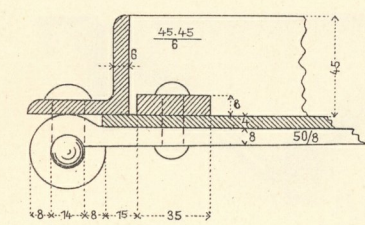
1. Geschlossener Behälter mit  $2 \times 9 = 18 \text{ m}^3$  Rauminhalt.



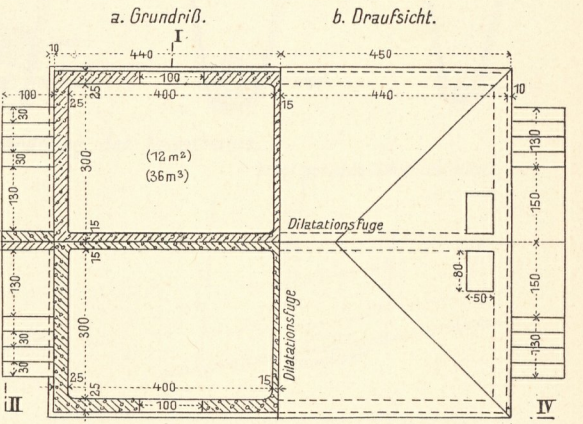
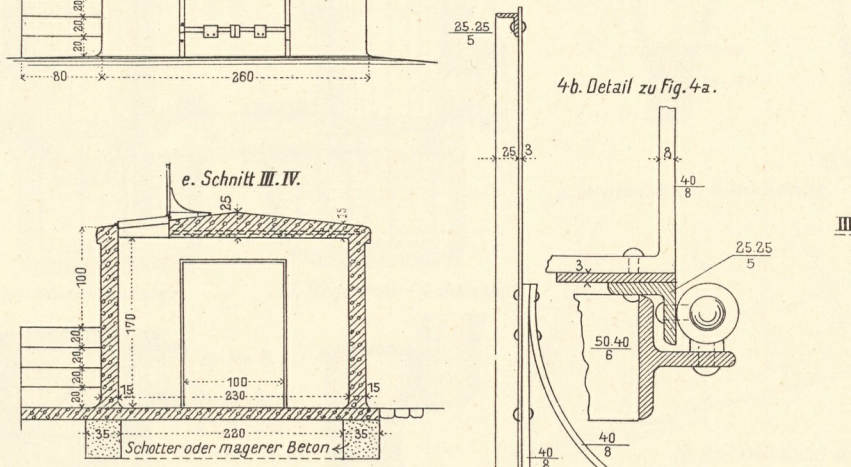
2. Geschlossene Behälter mit  $4 \times 36 = 144 \text{ m}^3$  Rauminhalt.



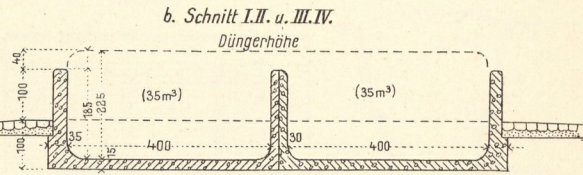
5d. Detail zu Fig. 5b.



4a. Einwurföffnung zu 1 und 2.



3. Offene Düngerbehälter mit  $4 \times 36 = 144 \text{ m}^3$  Rauminhalt.



5c. Höhengschnitt.

