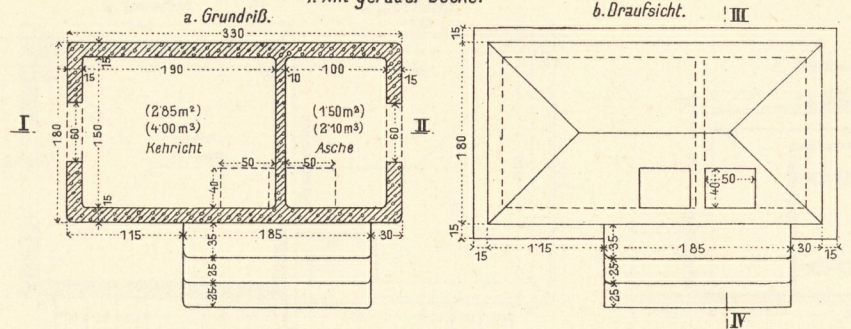
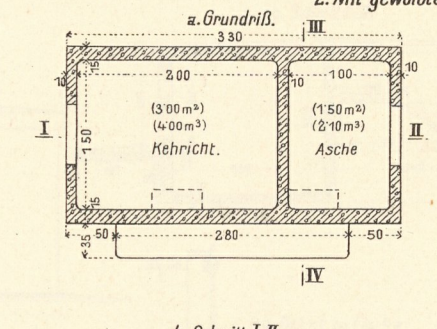


Sammelbehälter für Kehricht und Asche  
z.B. für eine Kaserne eines Bataillons einer Kavallerie- oder Artilleriedivision u.dgl.

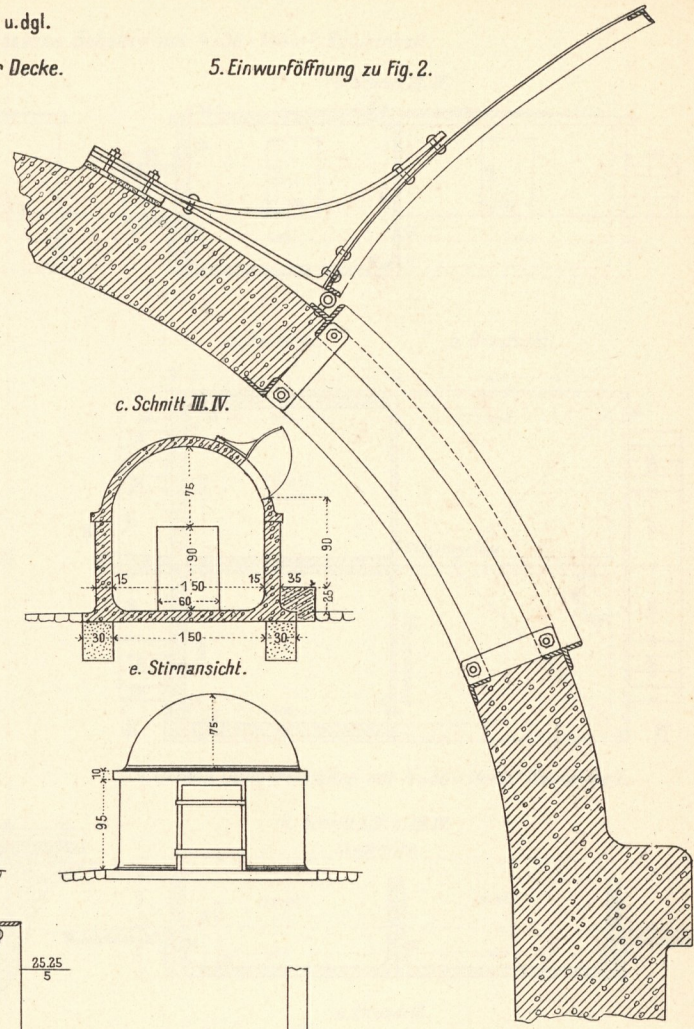
1. Mit gerader Decke.



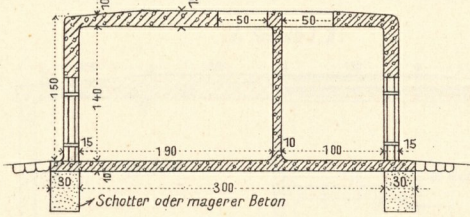
2. Mit gewölbter Decke.



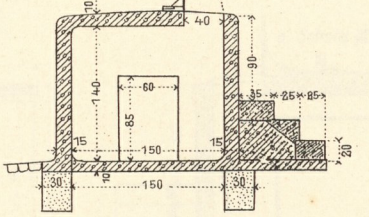
5. Einwurföffnung zu Fig. 2.



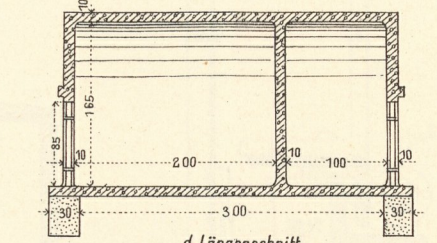
c. Schnitt I. II.



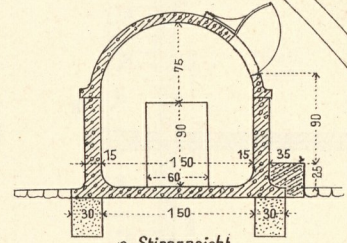
d. Schnitt III. IV.



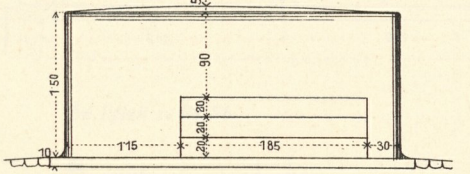
b. Schnitt I. II.



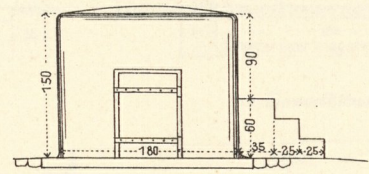
c. Schnitt III. IV.



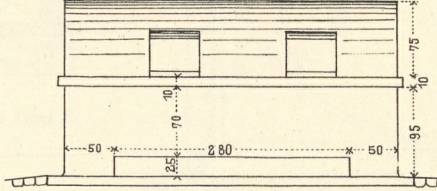
e. Längenschnitt.



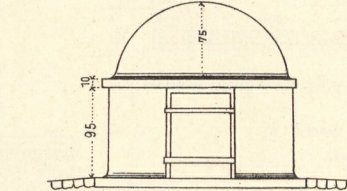
f. Stirnschnitt.



d. Längenschnitt.

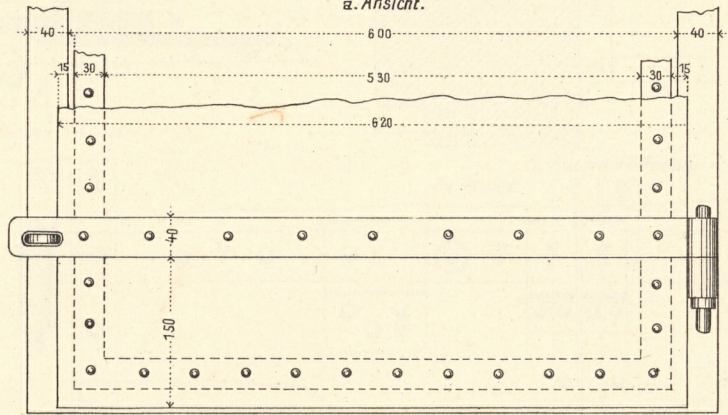


e. Stirnschnitt.

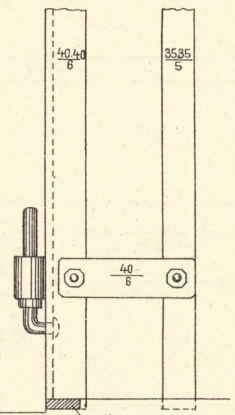


3. Auswurföffnung zu Fig. 1 u. 2.

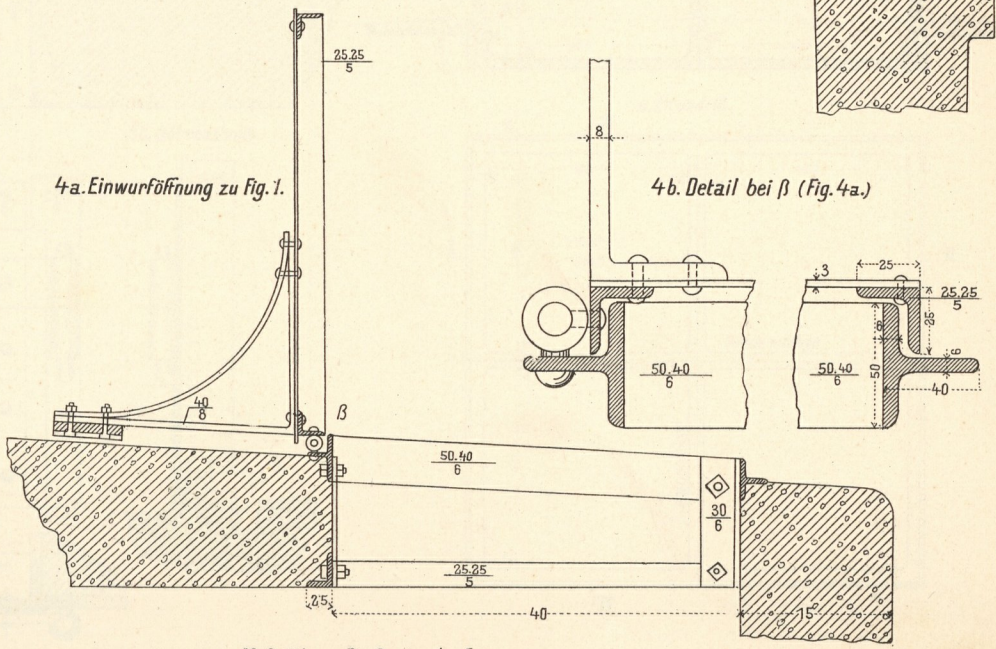
a. Ansicht.



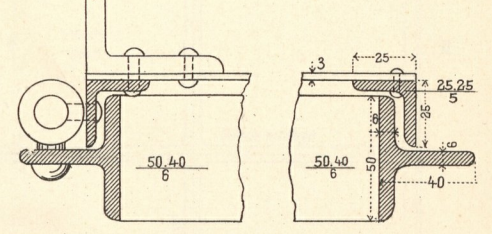
c. Höhenschnitt.



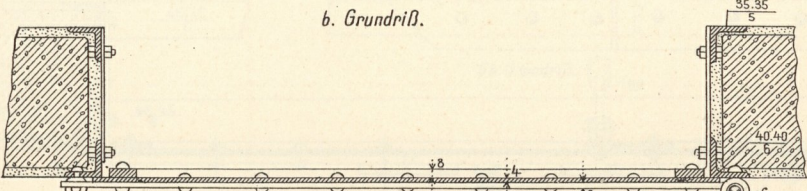
4a. Einwurföffnung zu Fig. 1.



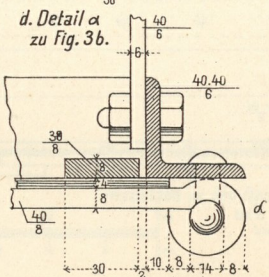
4b. Detail bei β (Fig. 4a.)



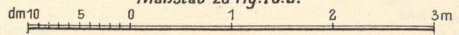
b. Grundriß.



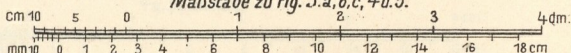
d. Detail α zu Fig. 3b.



Maßstab zu Fig. 1 u. 2.



Maßstäbe zu Fig. 3 a, b, c, 4 u. 5.



zu Fig. 3 d u. 4 b.