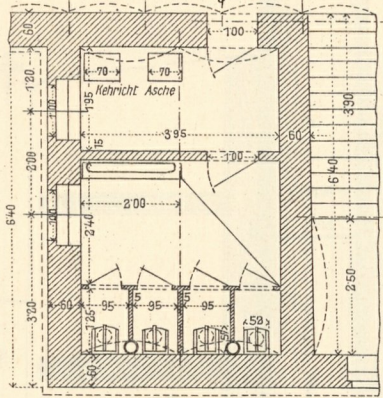
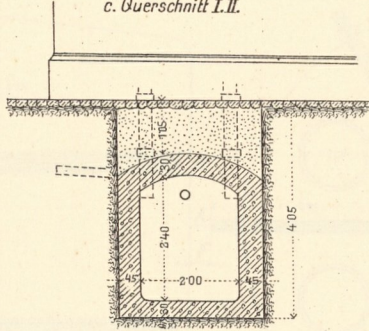


1. Abort mit Senkgrube zur Trennung der festen und flüssigen Abortstoffe.

a. Grundriß im Erdgeschoß.

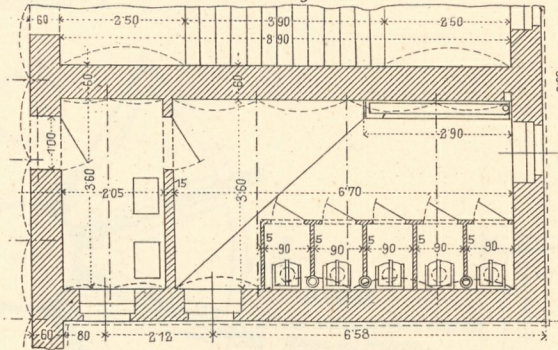


c. Querschnitt I.II.

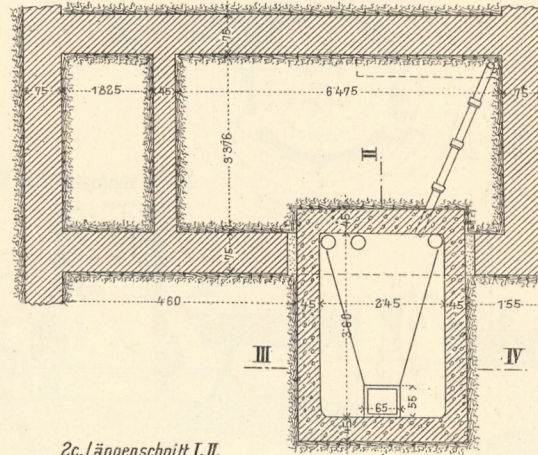


2. Abort mit Senkgrube.

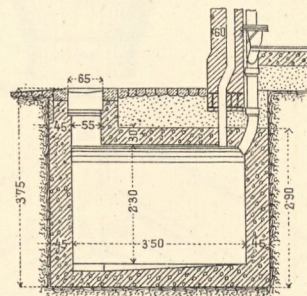
2a. Grundriß im Erdgeschoß.



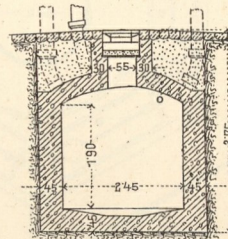
2b. Grundriß im Fundament.



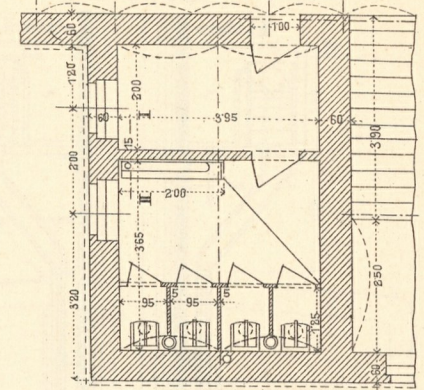
2c. Längenschnitt I. II.



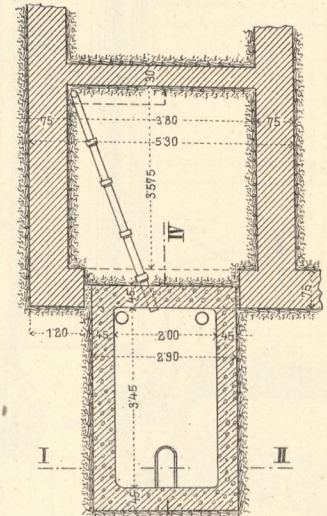
2d. Querschnitt III. IV.



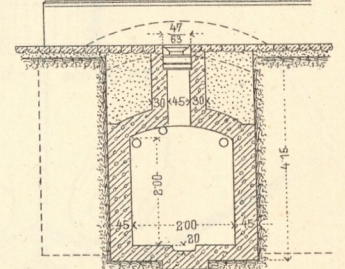
3. Abort mit Senkgrube.  
a. Grundriß im Erdgeschoß.



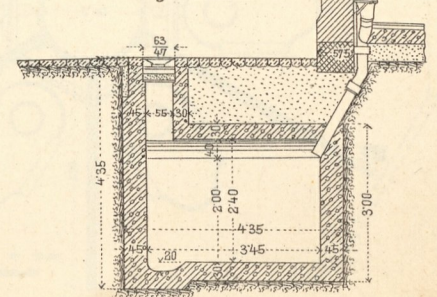
b. Grundriß im Fundament.



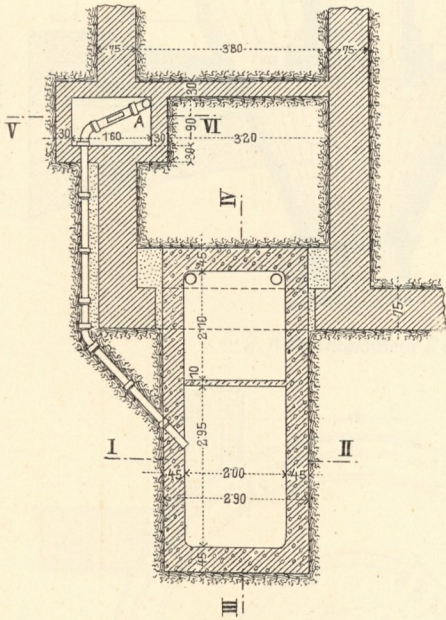
3c. Querschnitt I. II.



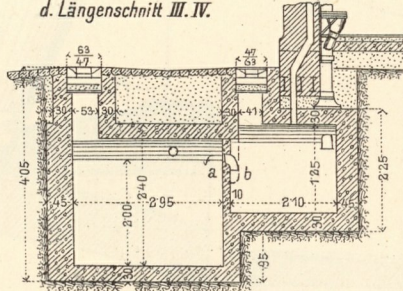
3d. Längenschnitt III. IV.



b. Grundriß im Fundament.



d. Längenschnitt III. IV.



e. Schnitt V. VI.

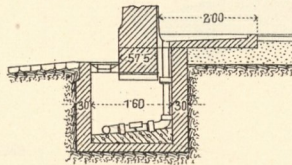
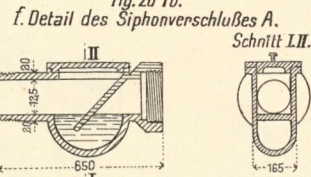


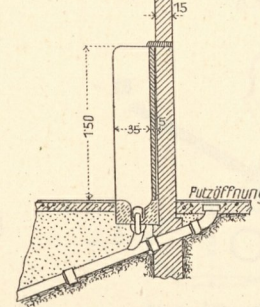
Fig. zu 1b.



f. Detail des Siphonverschlusses A. Schnitt I. II.

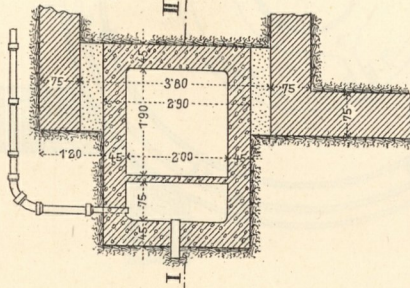
3e. zu Fig. 3a.

Schnitt I. II. Einmündung beim Pissoir.

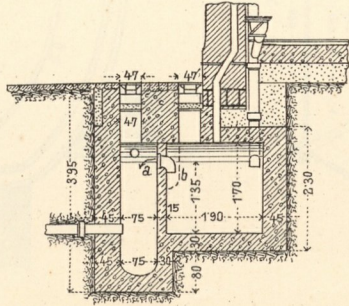


Alternative zu Fig. 1 zur Ableitung der flüssigen Stoffe.

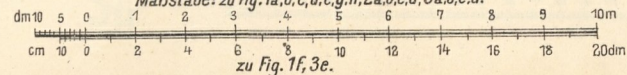
g. zu 1b. Grundriß.



h. zu 1d. Schnitt I. II.



Maßstäbe: zu Fig. 1a, b, c, d, e, g, h, 2a, b, c, d, 3a, b, c, d.



zu Fig. 1f, 3e.