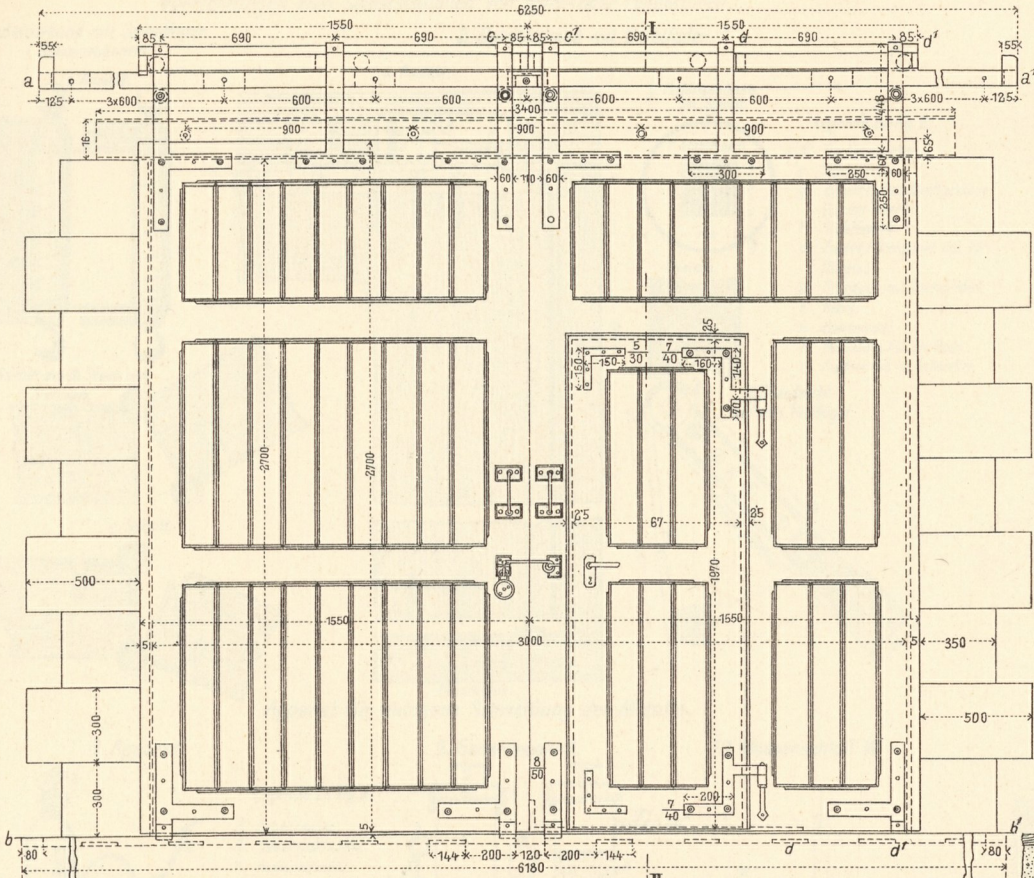
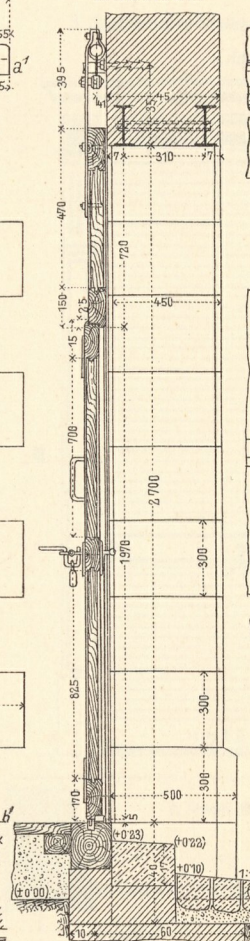


1. Ansicht.

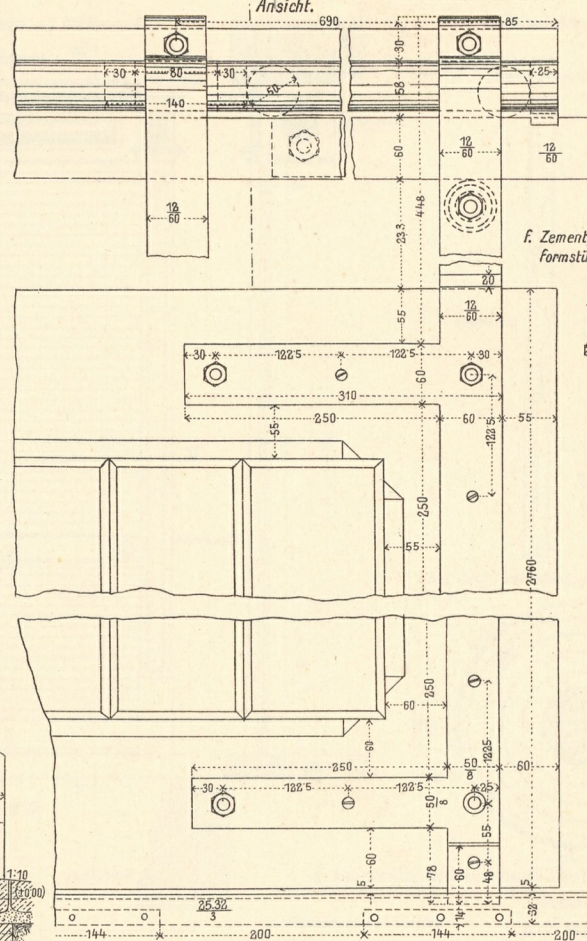


2. Schnitt I.I.

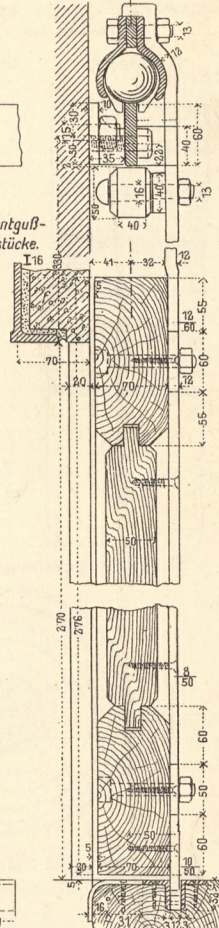


Ansicht.

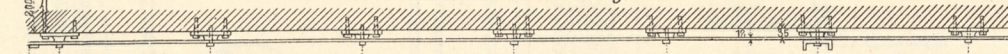
6. Detail von d d1.



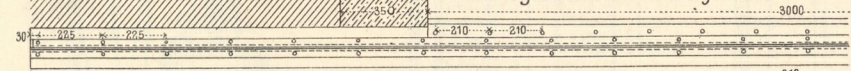
Schnitt I.I.



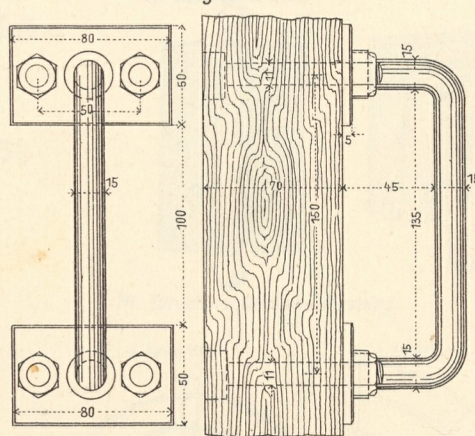
3. Laufschiene aa1 von oben gesehen.



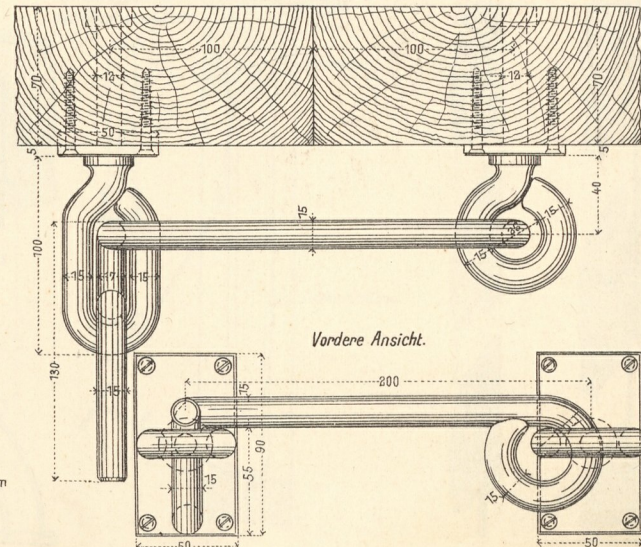
4. Führungsschiene bb1 von oben gesehen.



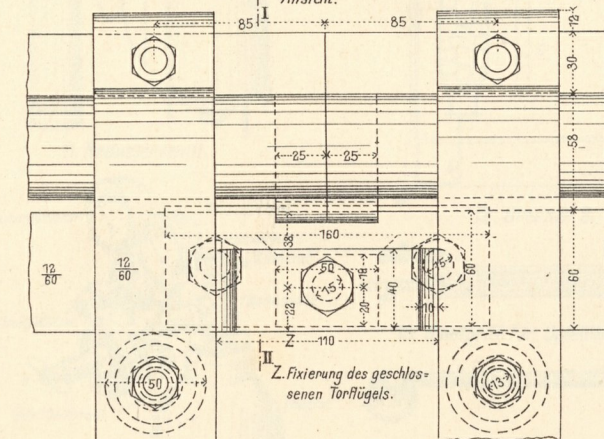
7. Handgriff.



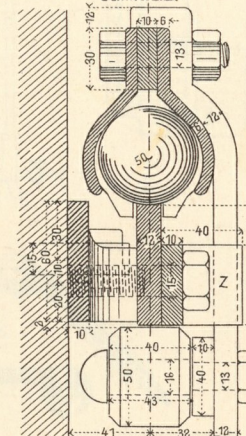
8. Verschlusshaken samt Kloben. Draufsicht.



5. Detail bei cc1.

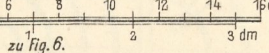


Schnitt I.I.



Z. Fixierung des geschlossenen Torflügels.

Maßstäbe: zu Fig. 1, 2, 3 u. 4.



zu Fig. 5, 7 u. 8.

