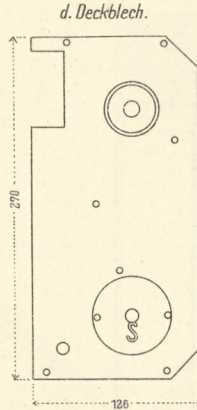
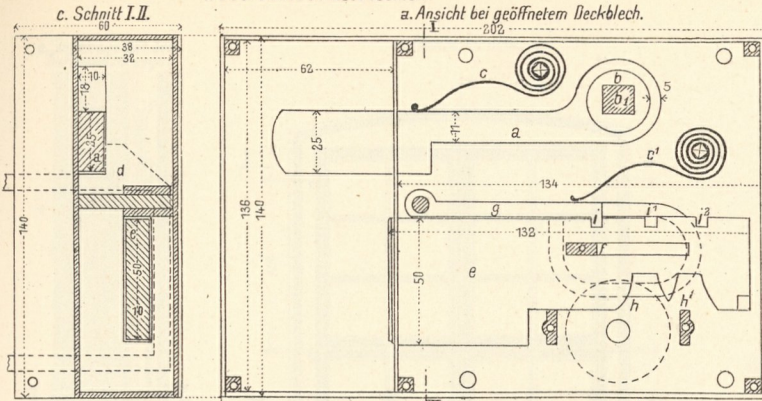
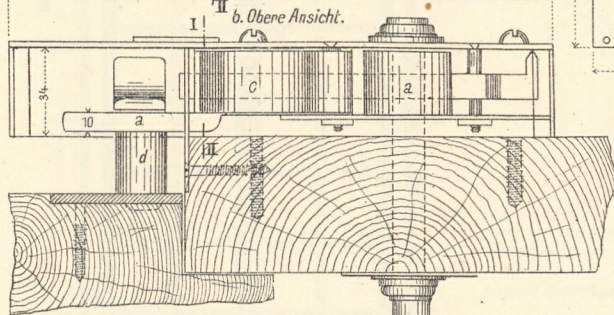


Schlosserarbeiten.

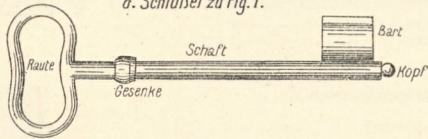
1. Überbautes Kastenschloß.



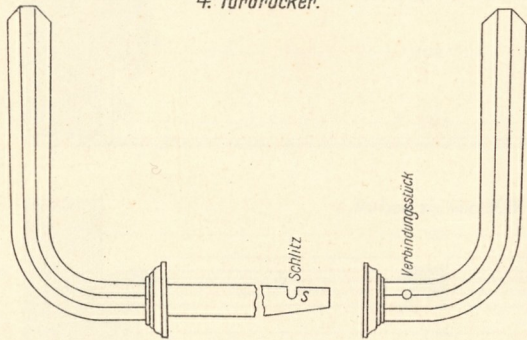
- Zu Fig. 1.
 a. Hebende Falle.
 b. Nuß.
 b'. Öffnung für den Türdrücken.
 c. Spiralfeder.
 d. Schließhaken.
 e. Schloßriegel.
 f. Führung.
 g. Zuhaltung.
 h, h'. Schluß.
 i, i. i'. Zapfenschlitze.



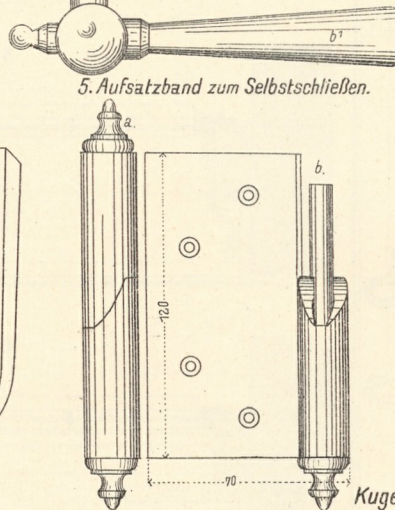
d. Schlüssel zu Fig. 1.



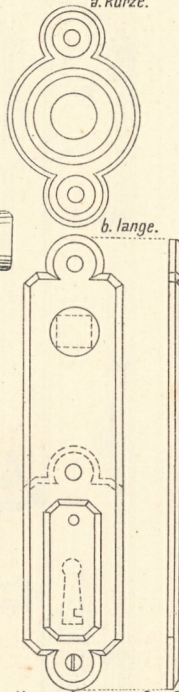
4. Türdrücker.



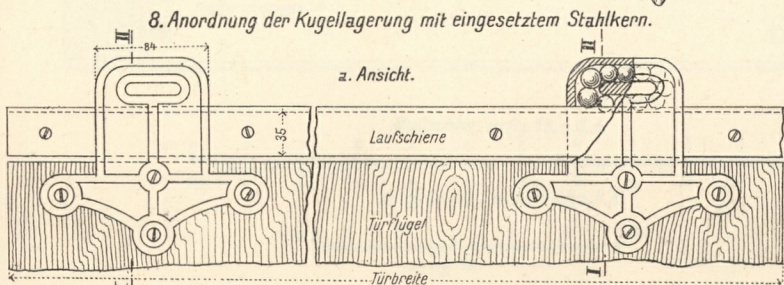
5. Aufsatzband zum Selbstschließen.



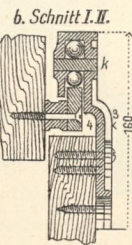
6. Türschilder.
 a. kurze.
 b. lange.



Kugellagerführung für Schiebetüren und Schiebetore. (Patent Kammeren u. Filzrassen).

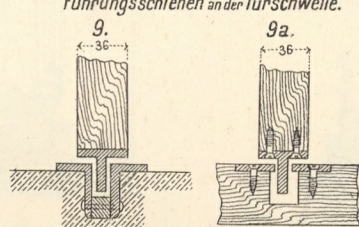


a. Ansicht.



b. Schnitt I. II.

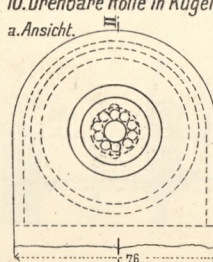
Führungsschienen an der Türschwelle.



9.

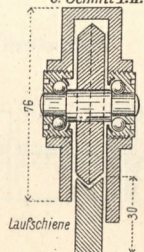
9a.

10. Drehbare Rolle in Kugeln gelagert.

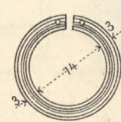


a. Ansicht.

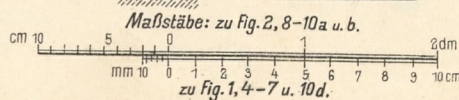
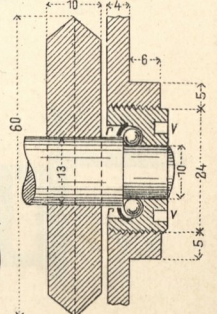
b. Schnitt I. II.



10c. Stahlreif.



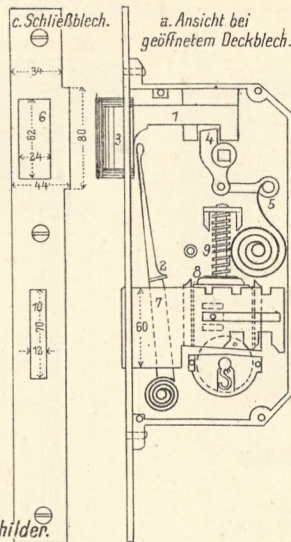
10d. Detail zu Fig. 10, b.



Maßstäbe: zu Fig. 2, 8-10a u. b.

zu Fig. 1, 4-7 u. 10d.

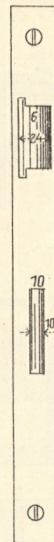
2. Eingestemtes Schloß.



c. Schließblech.

a. Ansicht bei geöffnetem Deckblech.

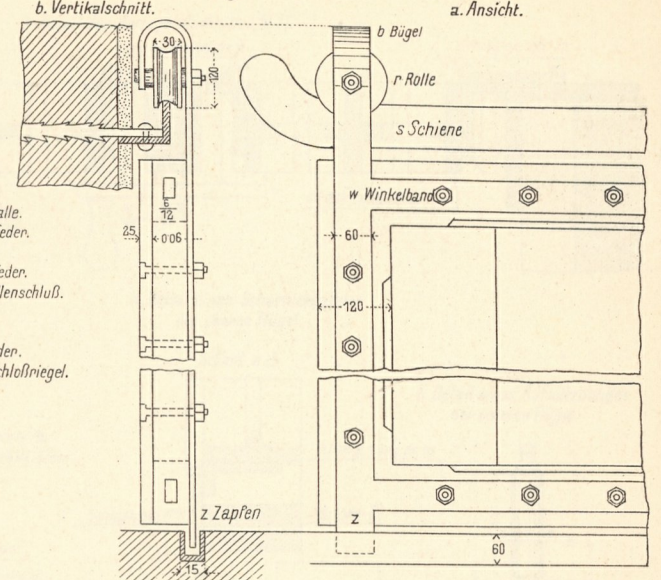
l. Vorderansicht.



Zu Fig. 2.

1. Schließende Falle.
2. Fallenschlußfeder.
3. Fallenkopf.
- 4, 5. Nuß samt Feder.
6. Schlitz f. d. Fallenschluß.
7. Schloßriegel.
8. Zuhaltung.
9. Zuhaltungsfeder.
10. Schlitz f. d. Schloßriegel.

3. Beschläge für Schiebetore.

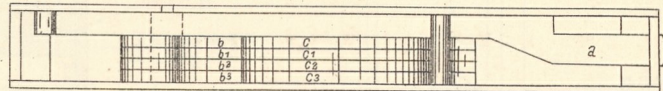


b. Vertikalschnitt.

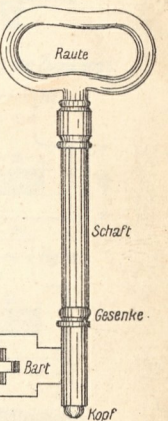
a. Ansicht.

7. Sicherheitsschloß.

A. Obere Ansicht.



D. Schlüssel zu fig. 7.



B. Vordere Ansicht.

