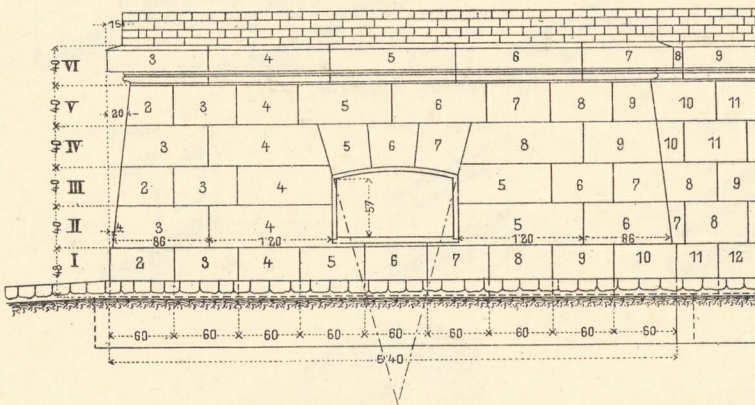
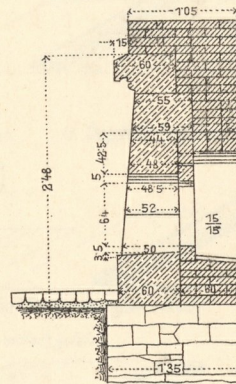


Beispiel eines Steinschnittes.

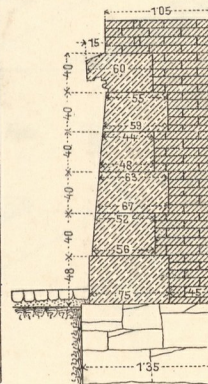
1. Ansicht.



3. Schnitt a. b.

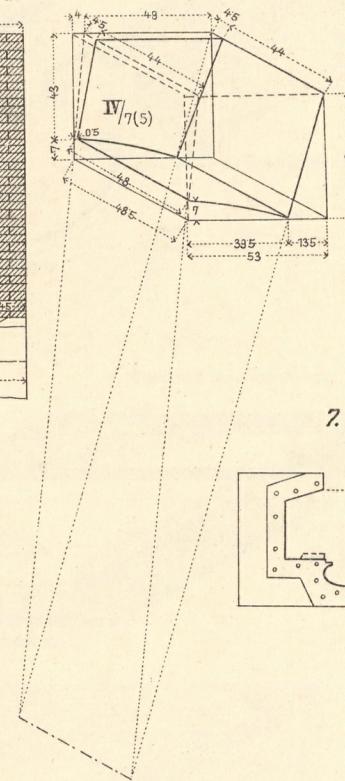


4. Schnitt c. d.

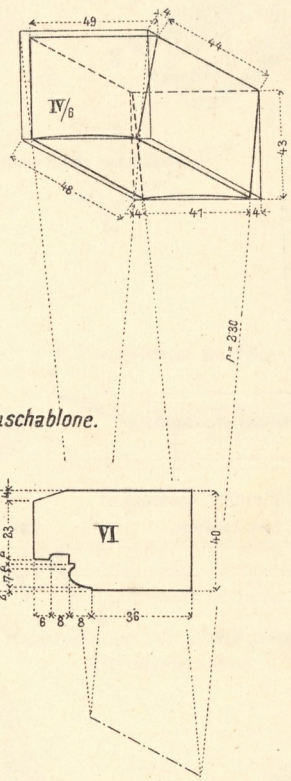


Detail der Quadern.

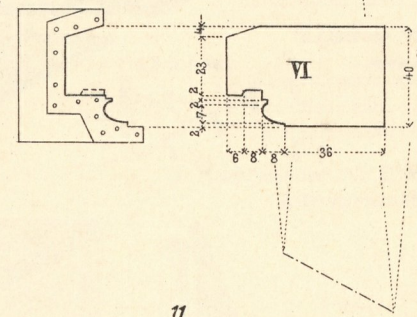
5.



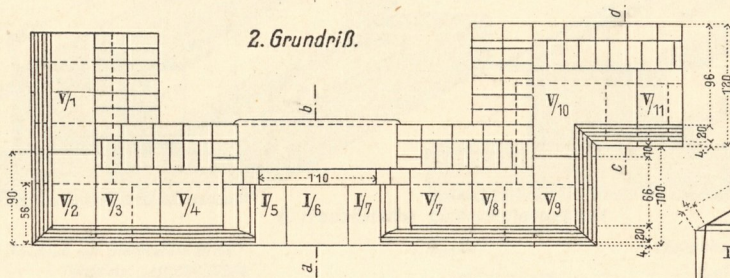
6.



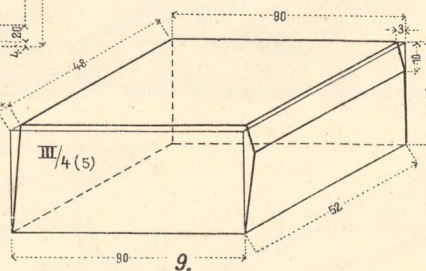
7. Kontraschablone.



2. Grundriß.

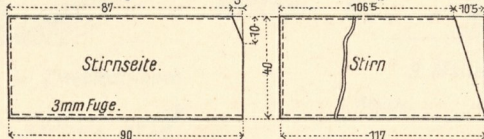


8.

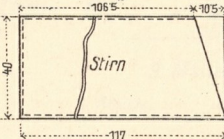


Schablonen.

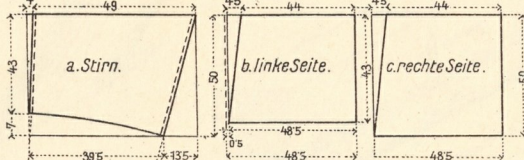
15 zu Fig. 8.



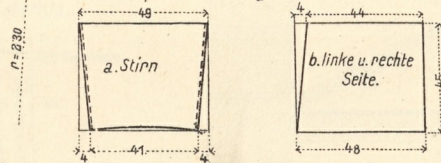
16 zu Fig. 14.



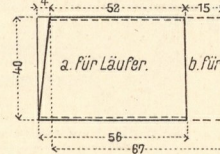
17 zu Fig. 5.



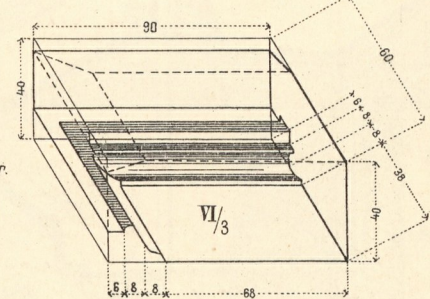
18 zu Fig. 6.



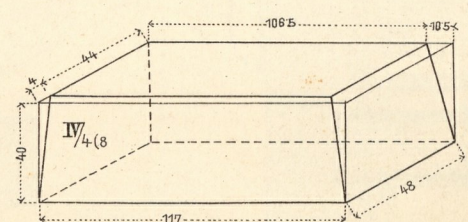
10. Schablone der Scharen II bis V.



11.



14.



Maßstäbe: zu Fig. 1-4.

