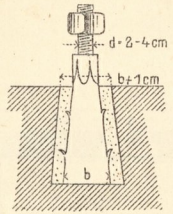
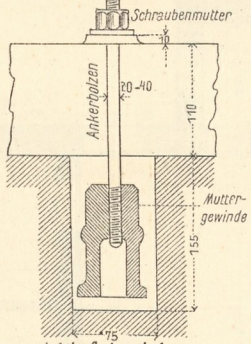


Ankerkonstruktionen.

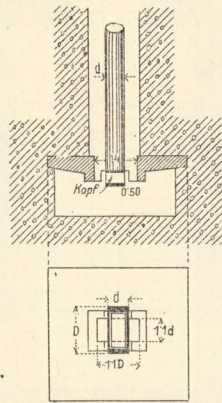
1. Steinschraube.



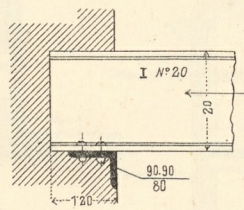
2. Fundamentschraube für Maschinen.



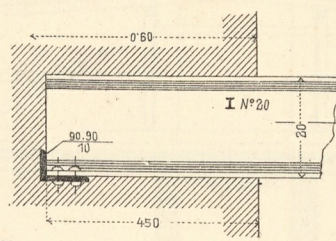
3. Lösbare Verankerung mit Druckplatte.



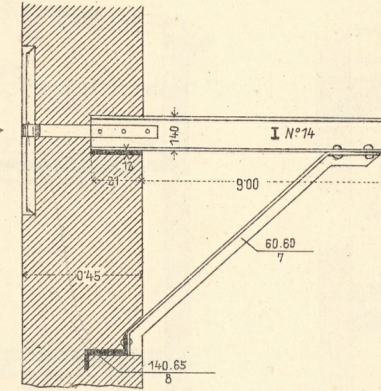
4. Auflager, gleichz. Druckanker.



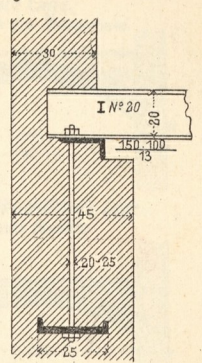
5. Auflager, gleichz. Zuganker.



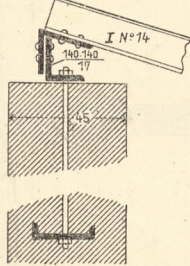
6. Balkonträgerverankerung.



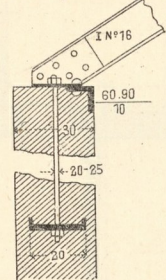
7. Träger-Auflager, gleichz. Druckanker.



8. Fallender Lagerung.

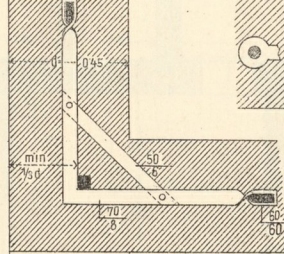


9. Steigender Lagerung.

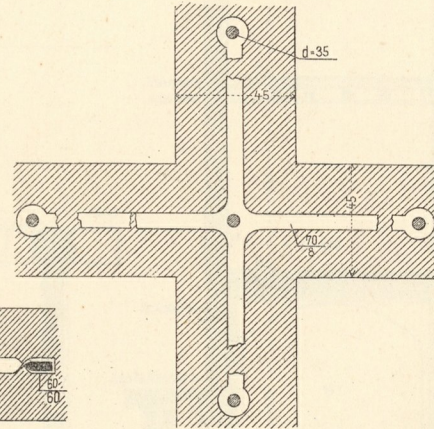


Trägerauflager zugleich Anker bei:

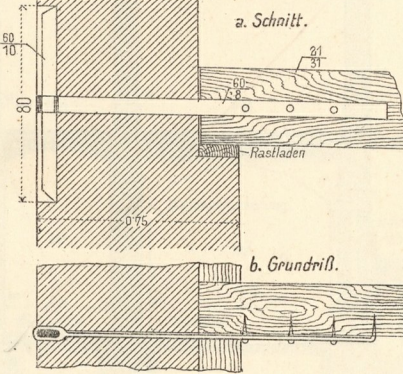
10. Eckanker.



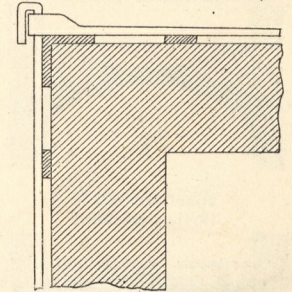
11. Kreuzanker.



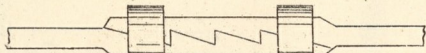
12. Transschließe seitlich an den Tram befestigt.



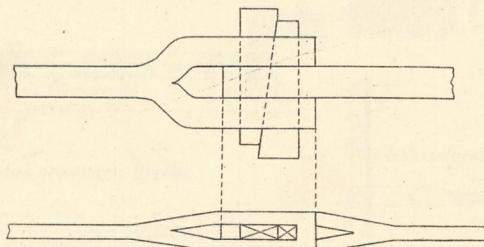
21. Eckanker.



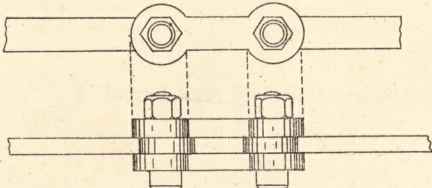
13. Zahnschloß.



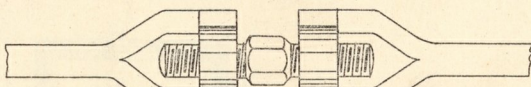
17. Gabelförmiges Keilschloß.



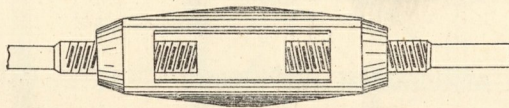
14. Kettenschloß.



15. Schraubenschloß.

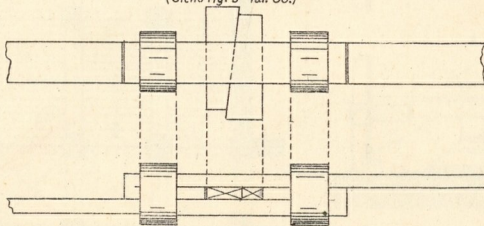


16. Muffenschloß.

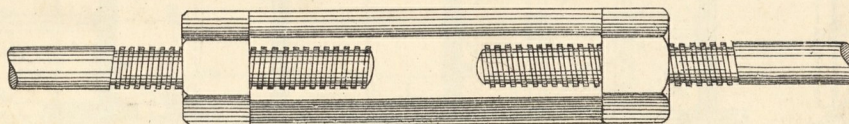


18. Gewöhnliches Keilschloß.

(Siehe Fig. 9 Taf. 38.)

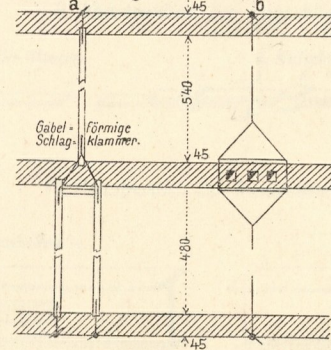


16a. Muffenschloß (Holländische Schraube) mit Spannstangen.

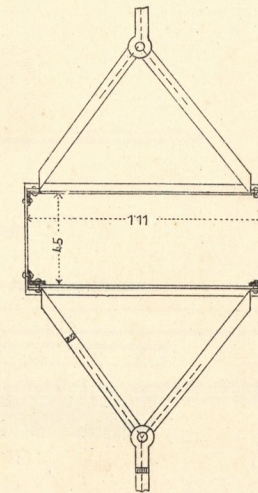


19. Anordnung der Zuganker.

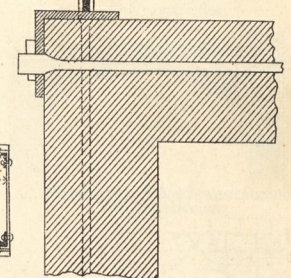
a. bei wechselseitiger Lagerung der Deckenträger
b. bei Umfassung von Rauchscloten.



Detail zu Fig. 19, b.

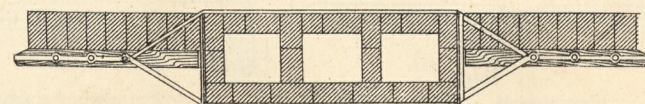


22. Eckanker.



20. Passierung schließbarer Rauchsclote durch Schließen.

c. Grundriß.



23. Eckanker.

