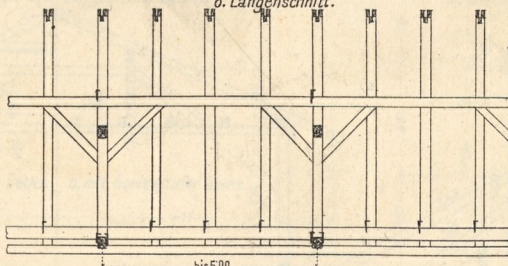
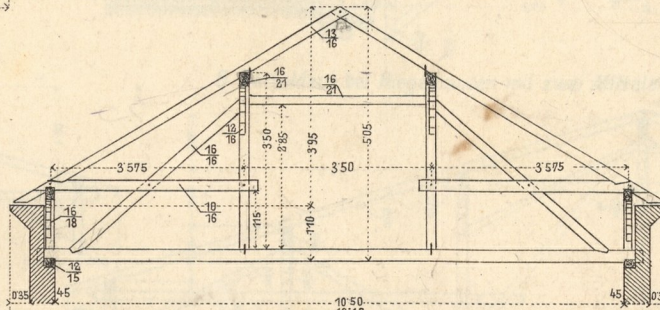


Dachkonstruktionen.

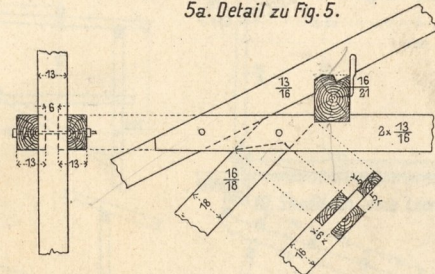
1. Doppelstuhl, normale Ausführung.
b. Längsschnitt.



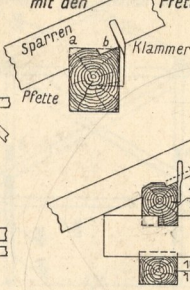
3. Doppelstuhl, Abart b.



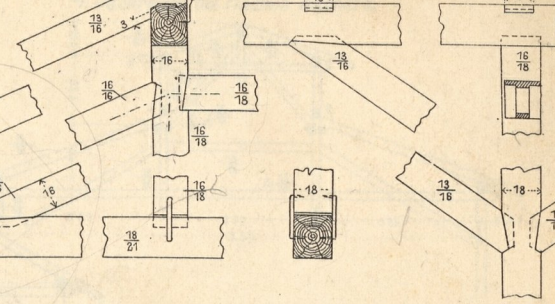
5a. Detail zu Fig. 5.



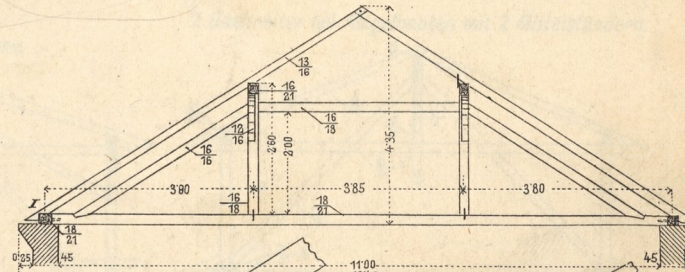
d. Verbindung der Sparren mit den Pfetten.



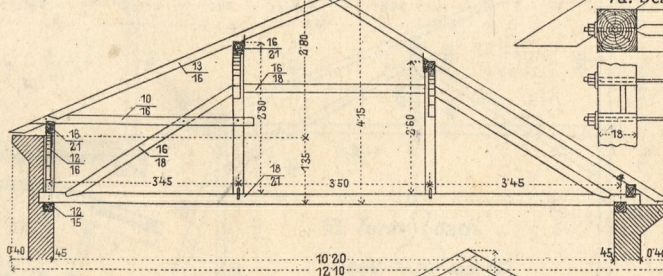
c. Detail der Holzverbindungen.



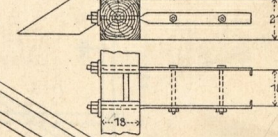
4. Doppelstuhl, Abart c.



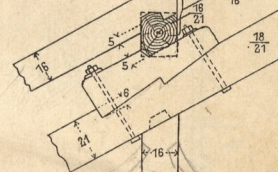
6. Doppelstuhl, Abart e.



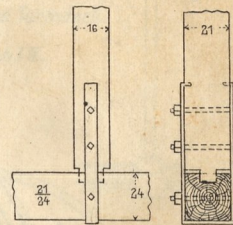
4a. Detail I zu Fig. 4.



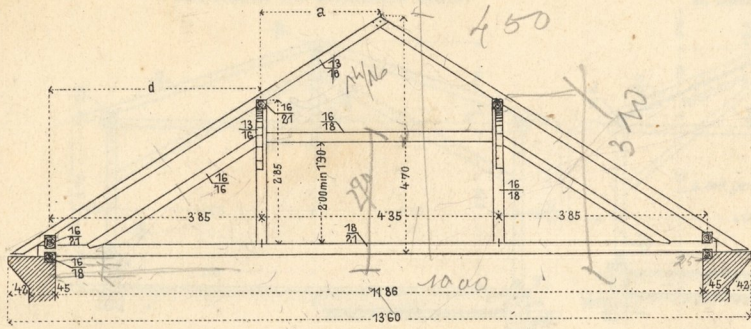
9a. Detail I zu Fig. 9.



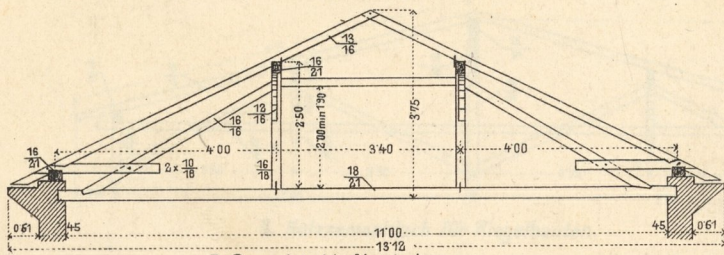
9b. Detail II zu Fig. 9.



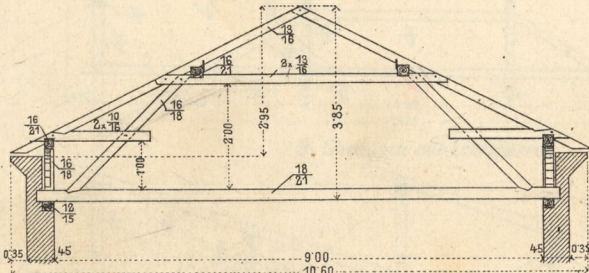
a. Querschnitt.



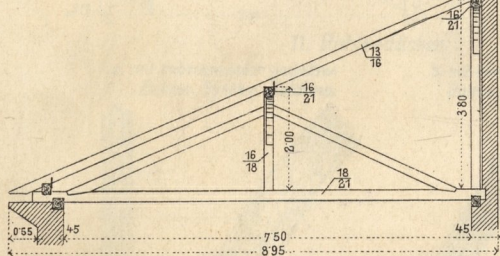
2. Doppelstuhl, Abart a.



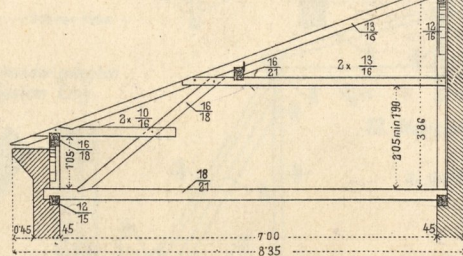
5. Doppelstuhl, Abart d.



7. Flugstuhl, normale Ausführung.

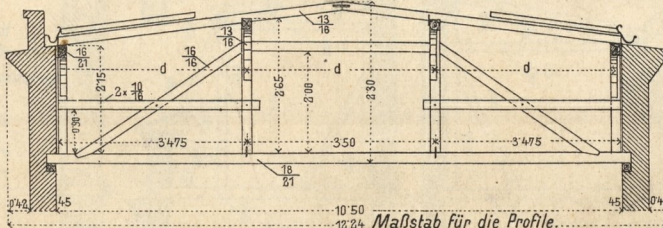


8. Flugstuhl ohne Stuhlsäule.

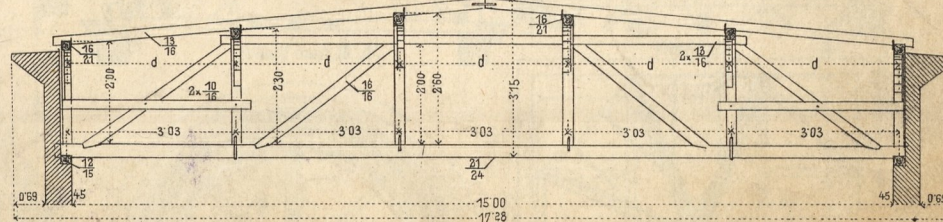


Pfettendachstühle für Holzzementdächer.

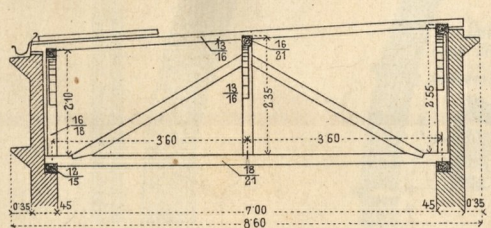
11. Satteldach mit doppeltem Stuhl.



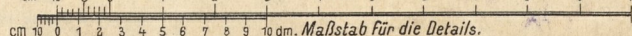
12. Satteldach mit verstärktem Stuhl.



10. Pultdach mit einfachem Stuhl.



Maßstab für die Profile.



Maßstab für die Details.