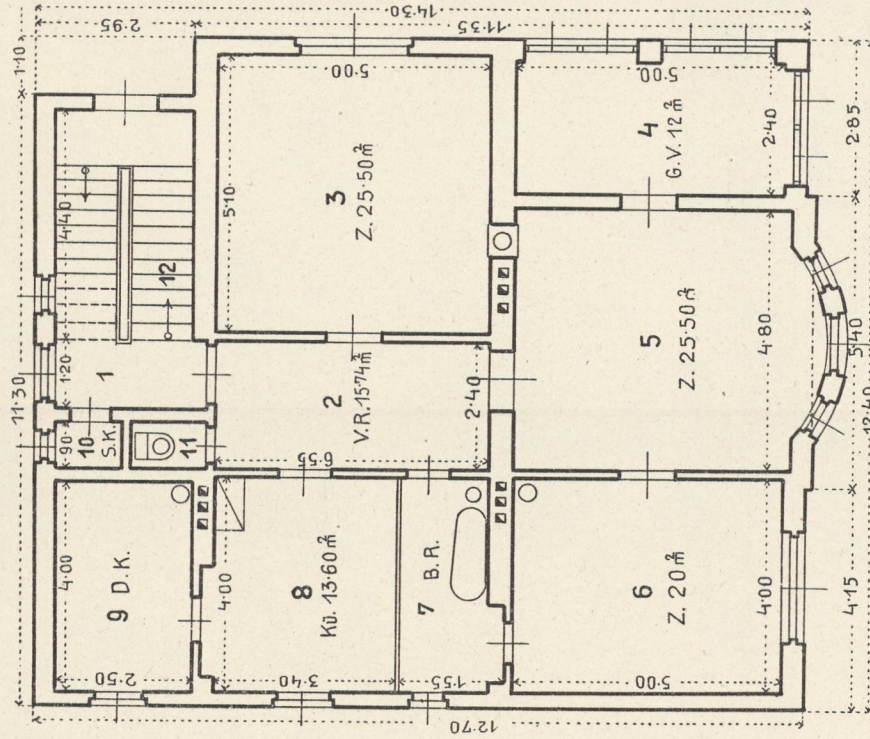
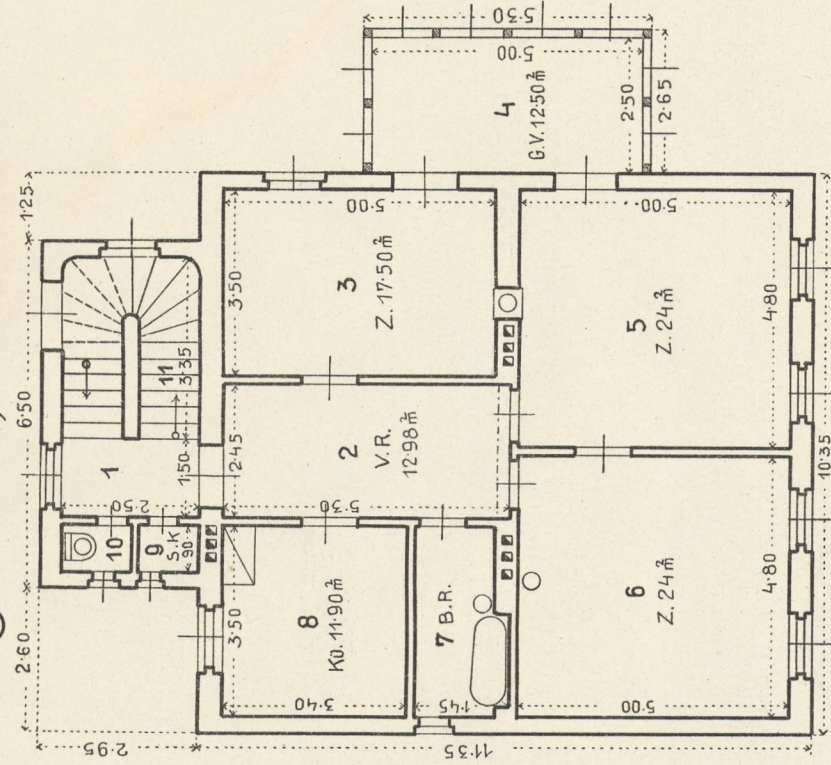


Grundrißentwürfe. 4 einstöckige Villen, je 2 Wohnungen mit 3 bis 4 Wohnräumen.

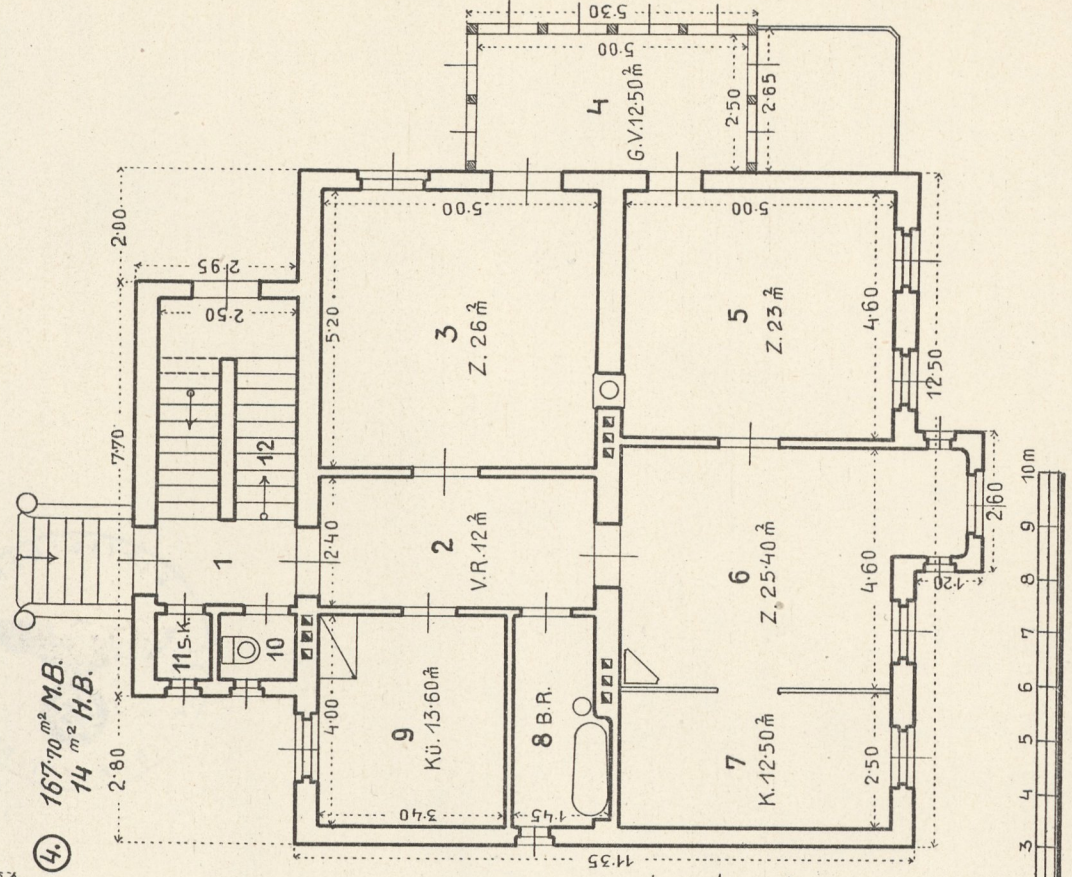
① 176.30 m² M.B.



② 136.65 m² M.B., 14 m² H.B.



④ 167.70 m² M.B.
14 m² H.B.



③ 125.55 m² M.B., 14 m² H.B.

