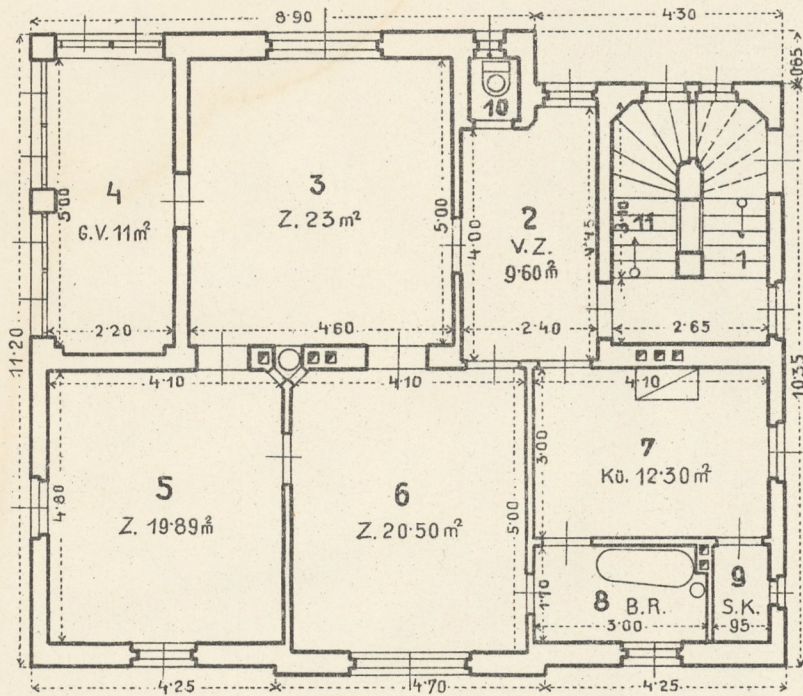


Grundrißentwürfe. 4 einstöckige Villen, je 2 Wohnungen mit 3 Wohnräumen.

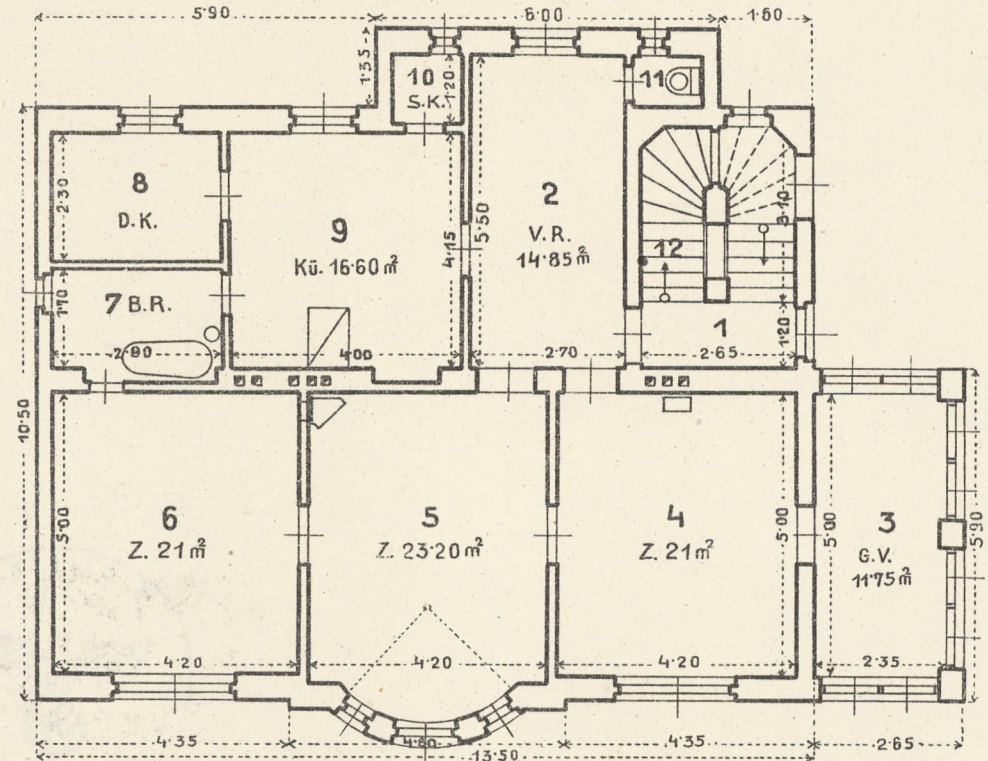
① 145 m² M.B.

H.P. (1.St.)



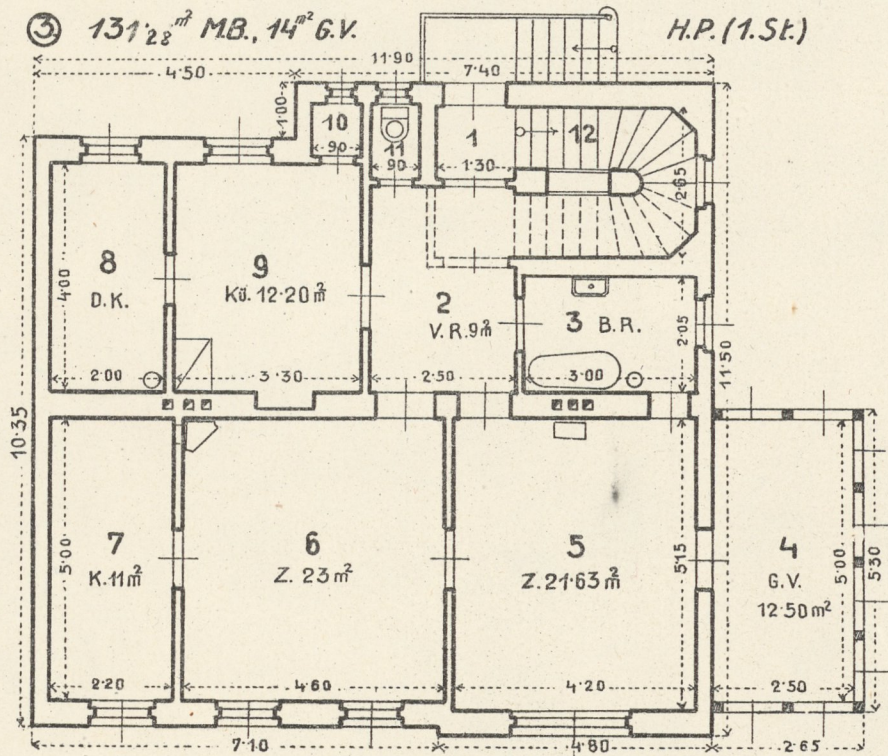
② 152 m² M.B., 15.64 m² G.V.

H.P. (1.St.)



③ 131.28 m² M.B., 14 m² G.V.

H.P. (1.St.)



④ 153.95 m² M.B.

H.P. (1.St.)

