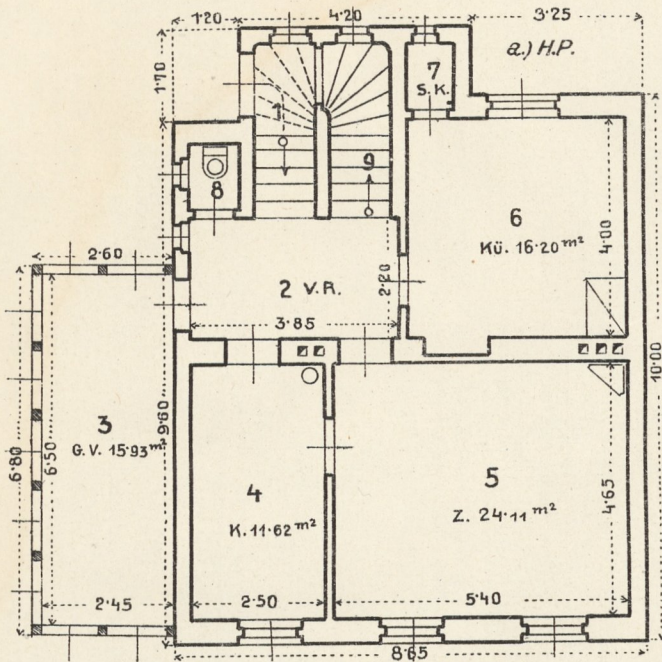


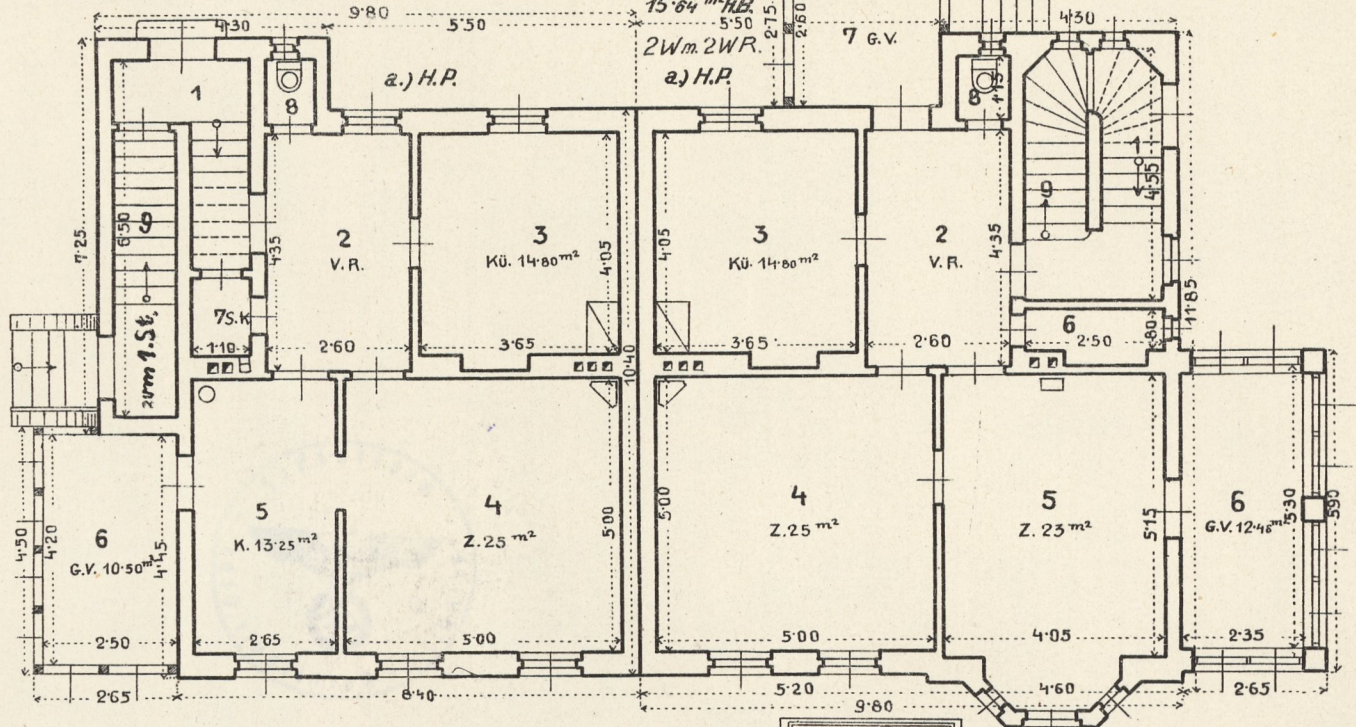
Grundrißentwürfe.

3 einstöckige Villen, je 1 oder 2 Wohnungen mit 2 bis 5 Wohnräumen.

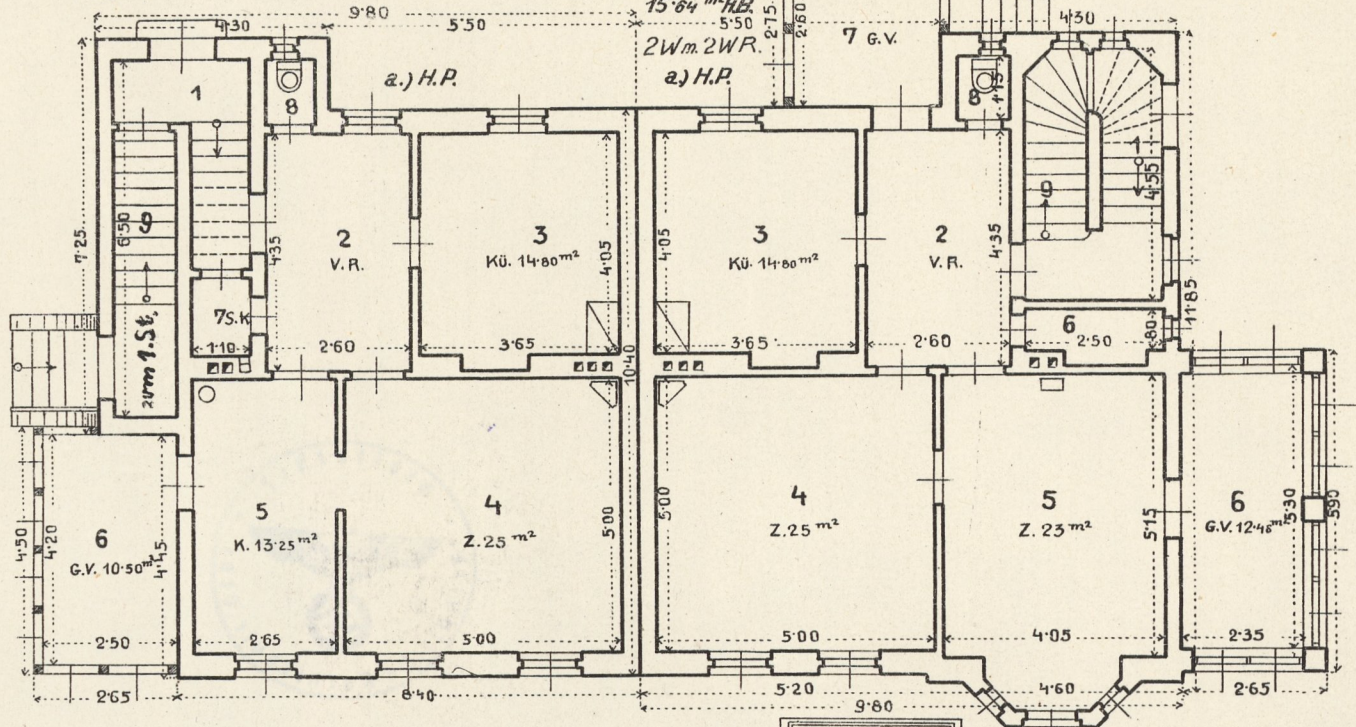
① 91,5 m<sup>2</sup> M.B., 17,68 m<sup>2</sup> H.B.  
1W, 5WR.



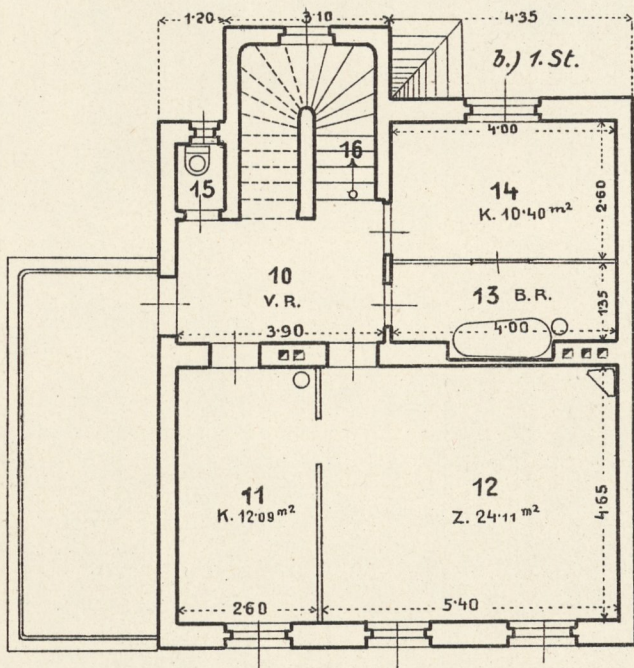
② 115,90 m<sup>2</sup> M.B., 11,90 m<sup>2</sup> H.B. 2W, 2WR.



③ 110 m<sup>2</sup> M.B., 15,64 m<sup>2</sup> H.B.  
2W, 2WR.



b.) 1.St.



b.) 1.St.

