

Projekt II. Entwurf eines Wohnhauses (Hiezu Fig. 1-3 auf Taf. 13.)

Fig. 4. Schnitt I-II.

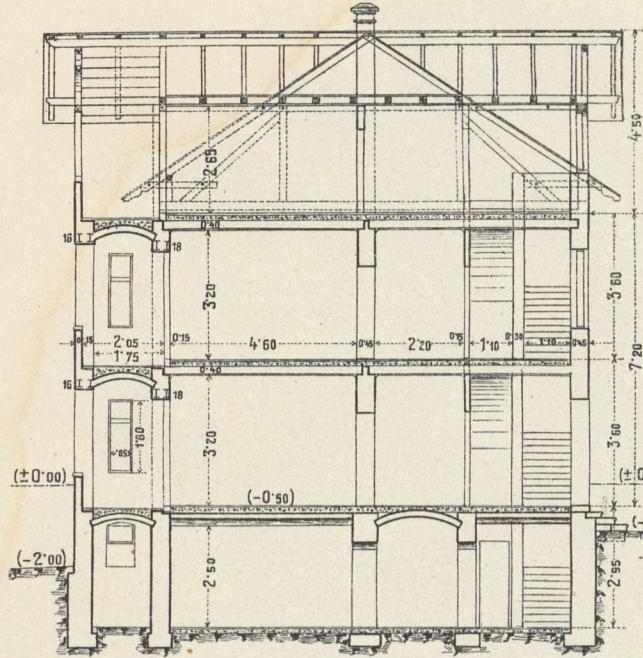


Fig. 5. Südliche Ansicht.

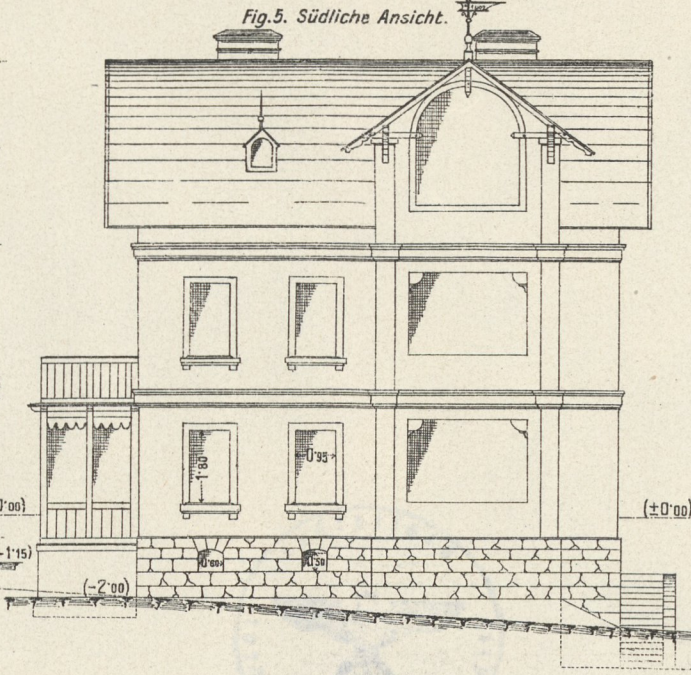


Fig. 6. Westliche Ansicht.

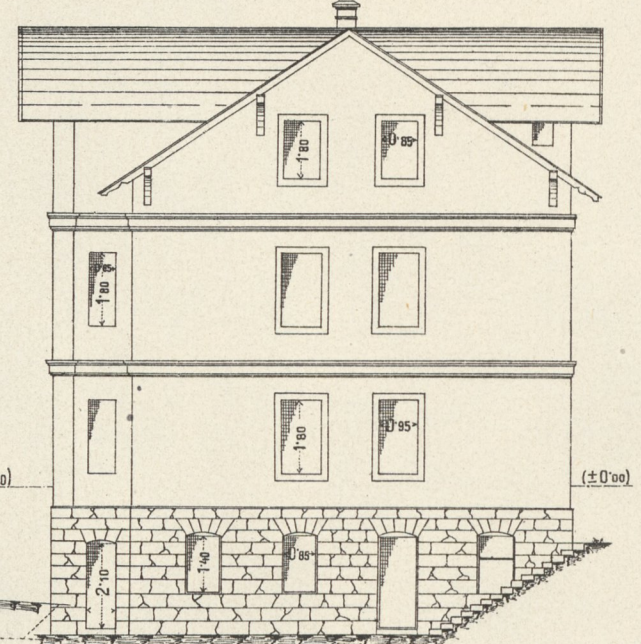


Fig. 7. Parterre

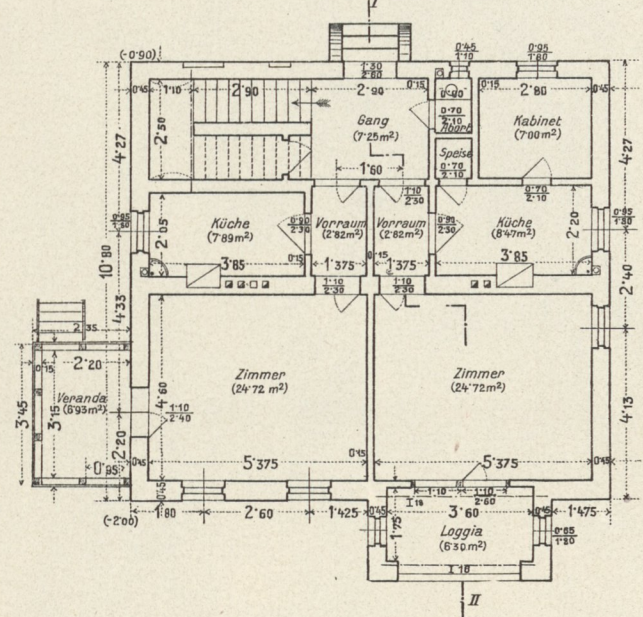


Fig. 8. I. Stock.

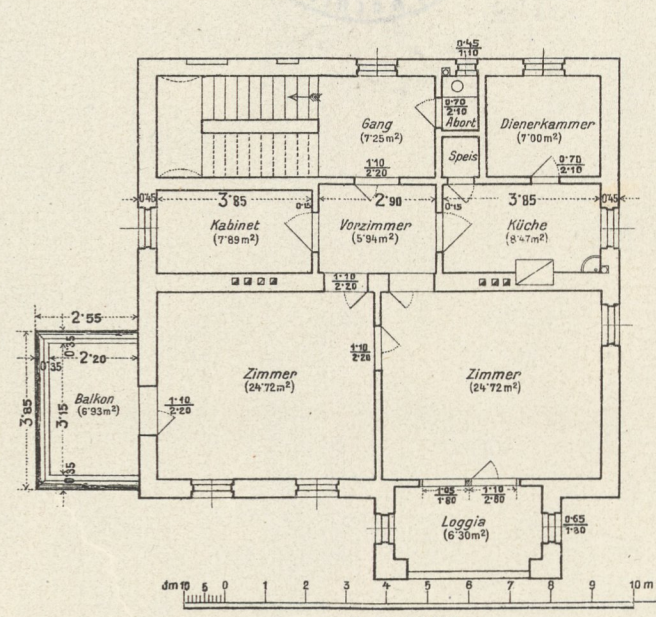
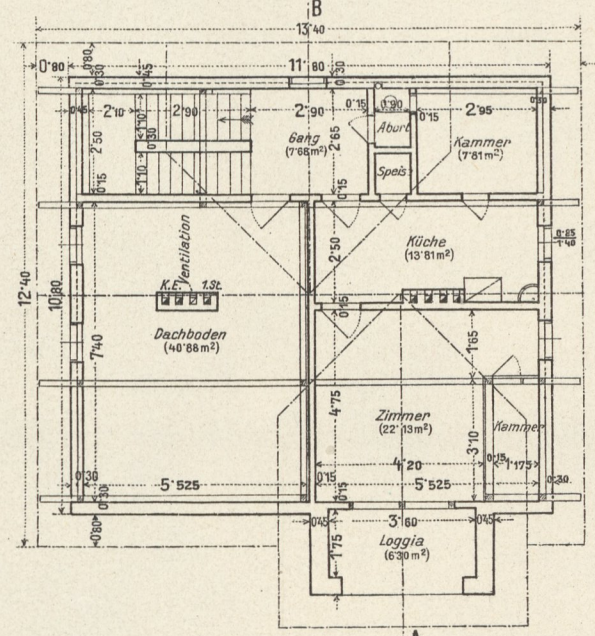


Fig. 9. Dachgeschoß (Werksatz)



dm 0 1 2 3 4 5 6 7 8 9 10 m
Maßstab 1:100.