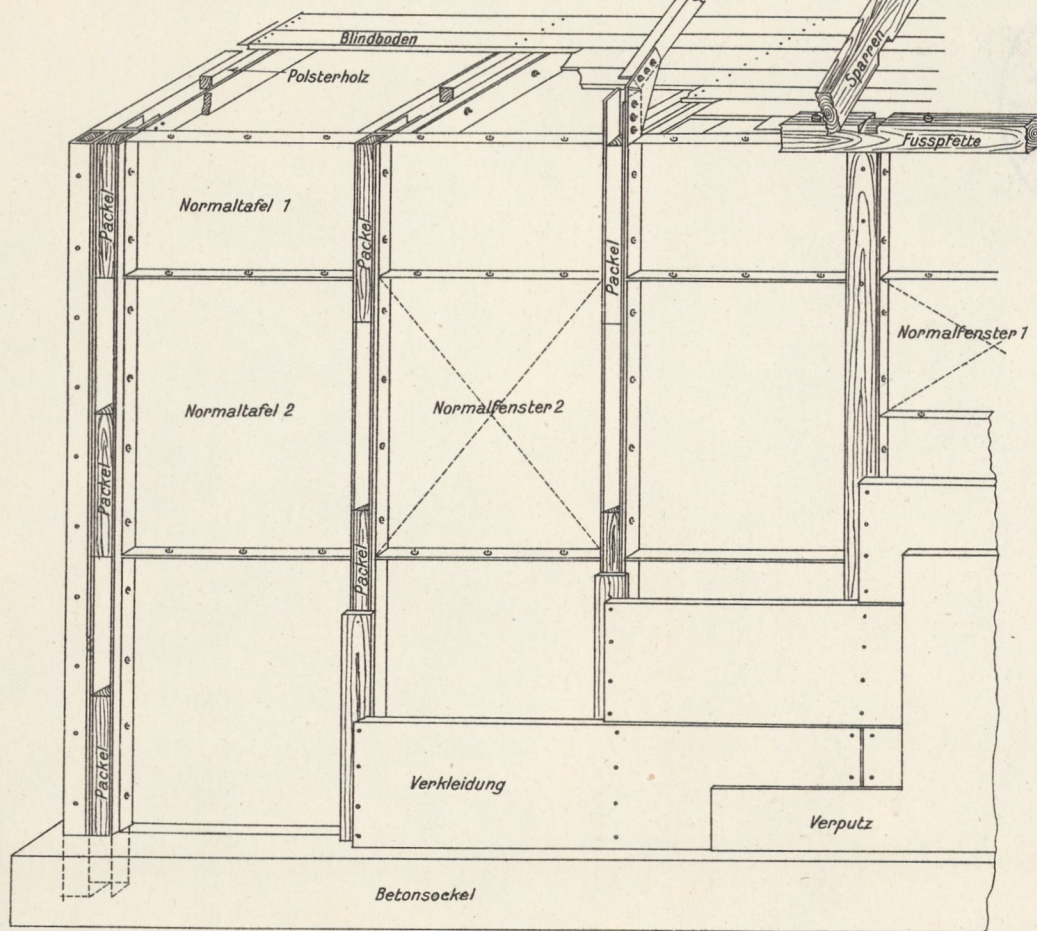
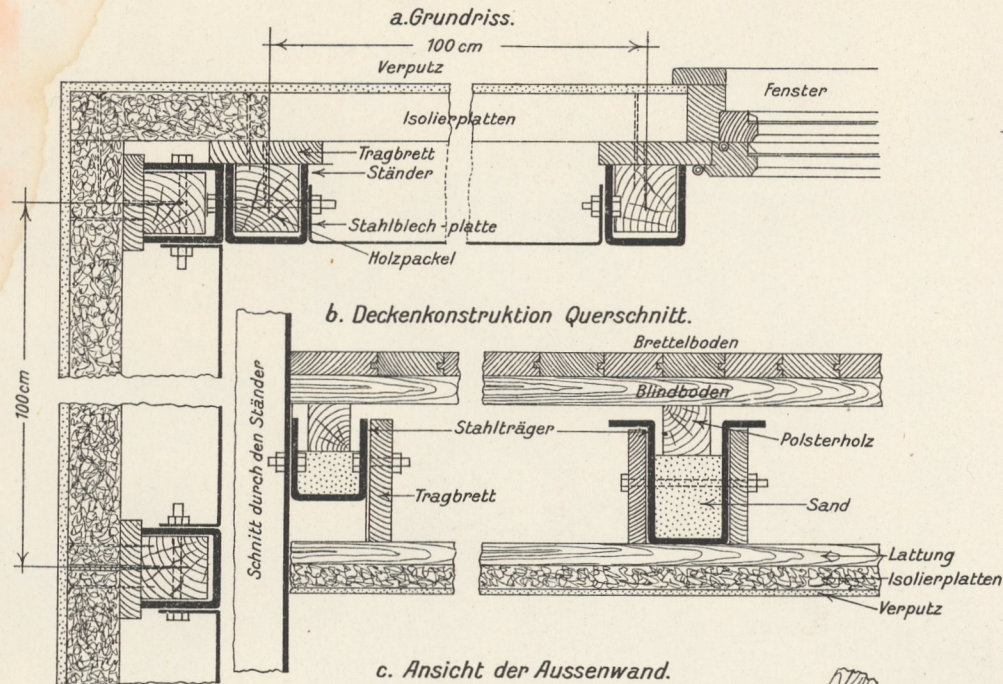
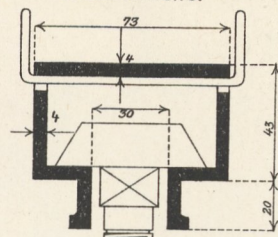


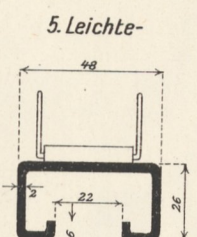
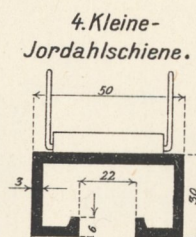
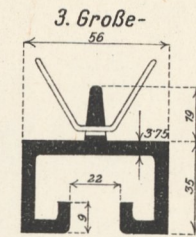
1. Böhler Stahlbauweise. System Jng. Schmid. Pat. ang.



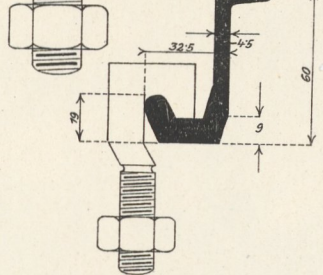
2. Bauschiene.



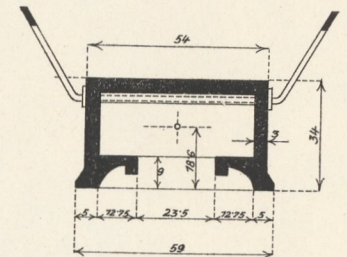
Ankerschienen.



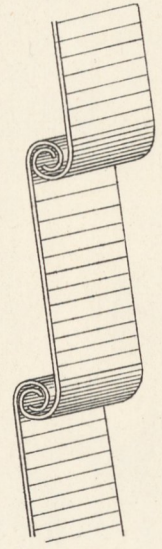
6. L. Schiene Profil 6.



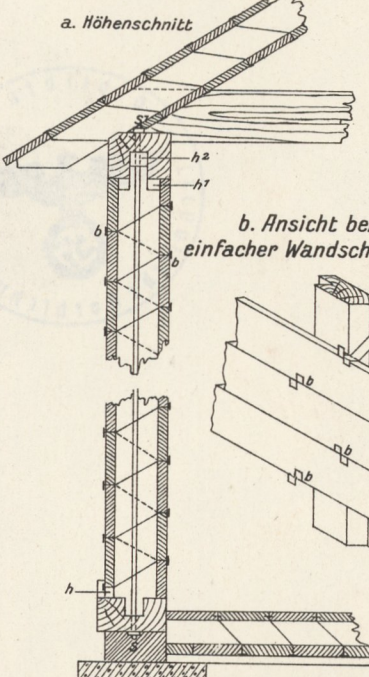
7. Union-Ankerschiene.



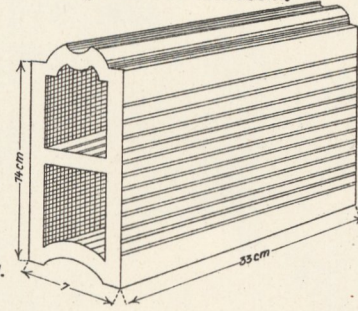
8. Athlet-Panzerrollbalken.



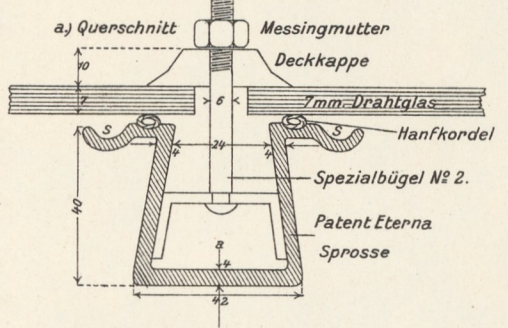
9. Zerlegbare Riegelwand.



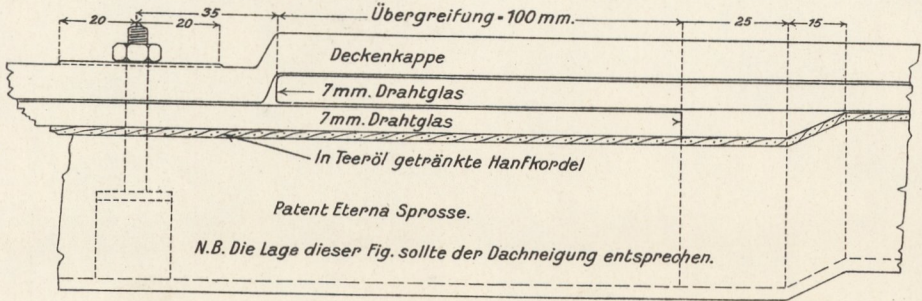
10. „Oka“ Tonhohlstein.



11. Kittlose Patent-Glasoberlichte.



11b. Kröpfungsdetail bei Sproßenlängen über 4 m.



N.B. Die Lage dieser Fig. sollte der Dachneigung entsprechen.