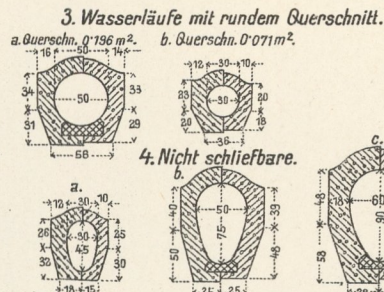
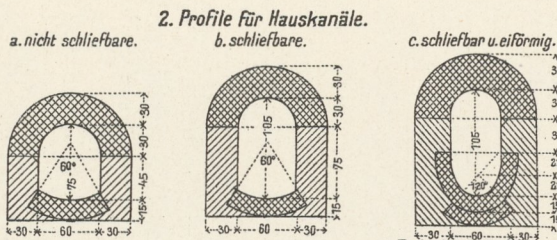
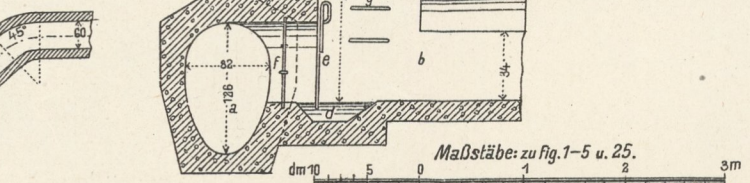
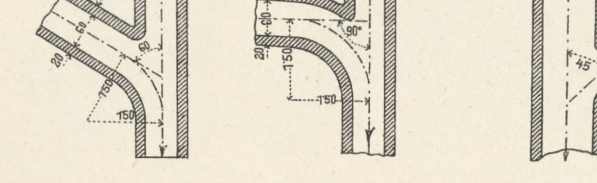
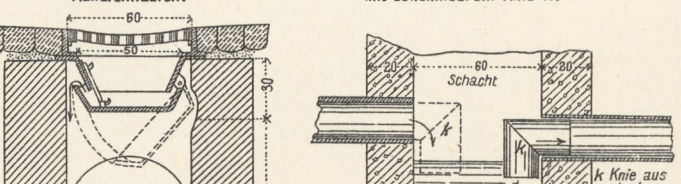
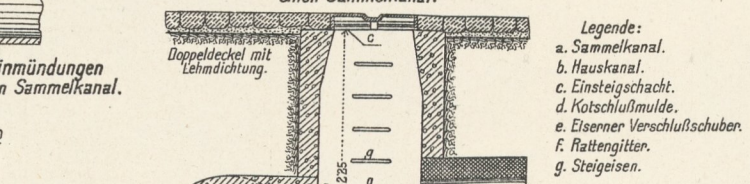
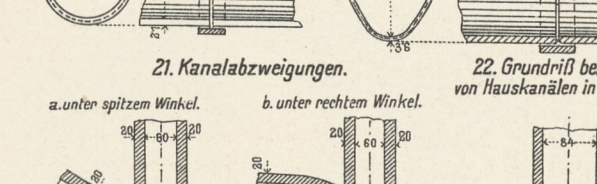
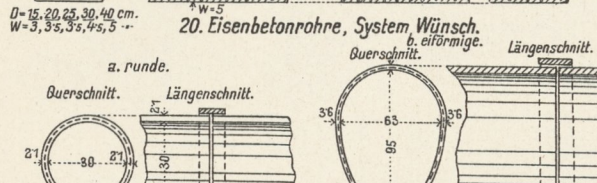
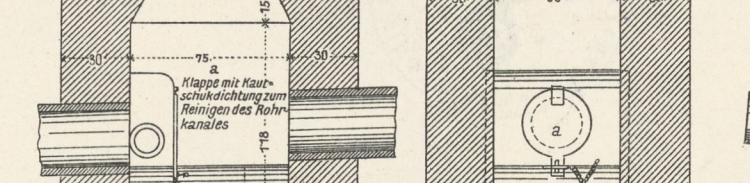
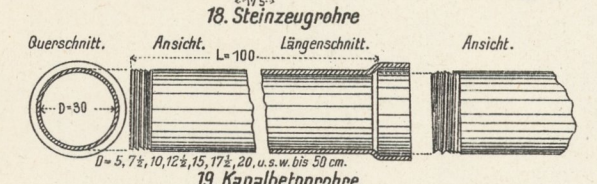
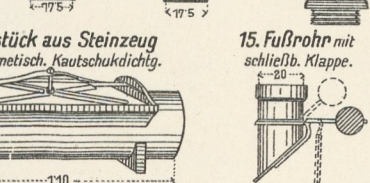
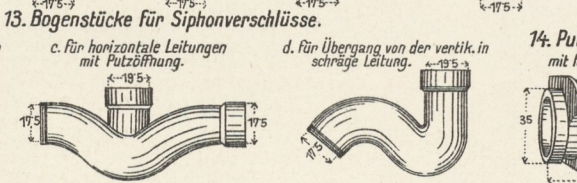
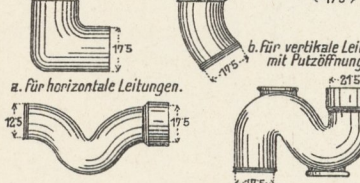
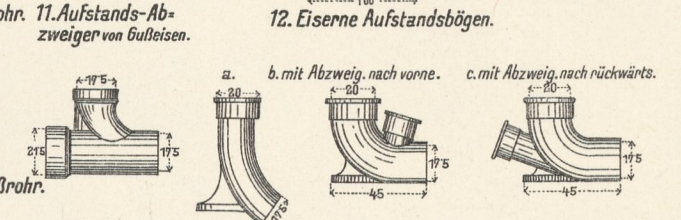
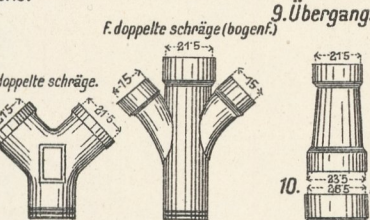
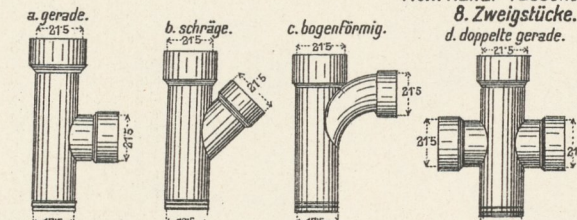
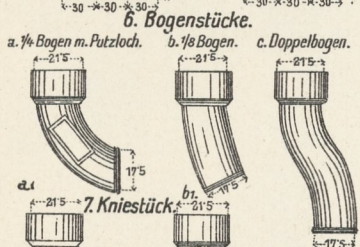
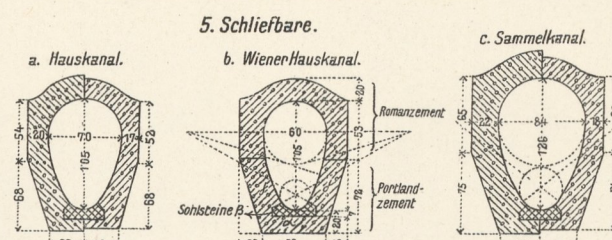


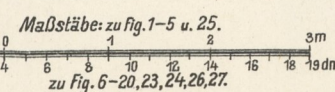
Kanalprofile aus Ziegelmauerwerk.



Kanalprofile aus Beton, die linke Hälfte für Romanzement- u. die rechte für Portlandzement-Beton.



Titscher: Baukunde.



- Legende:  
 a. Sammelkanal.  
 b. Hauskanal.  
 c. Einsteigschacht.  
 d. Kotschlußmulde.  
 e. Eiserner Verschlussschuber.  
 f. Rattengitter.  
 g. Stangeisen.