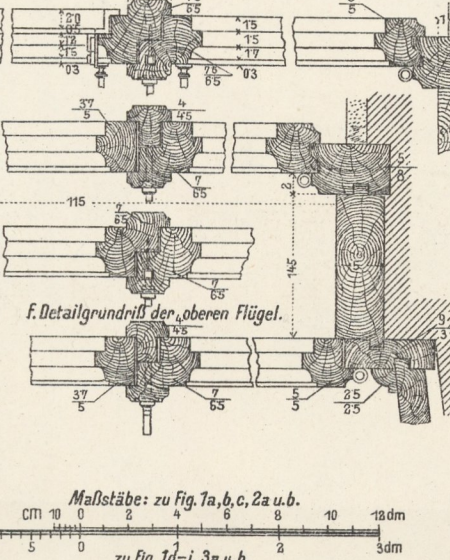
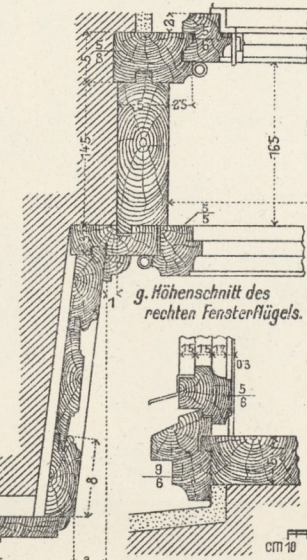
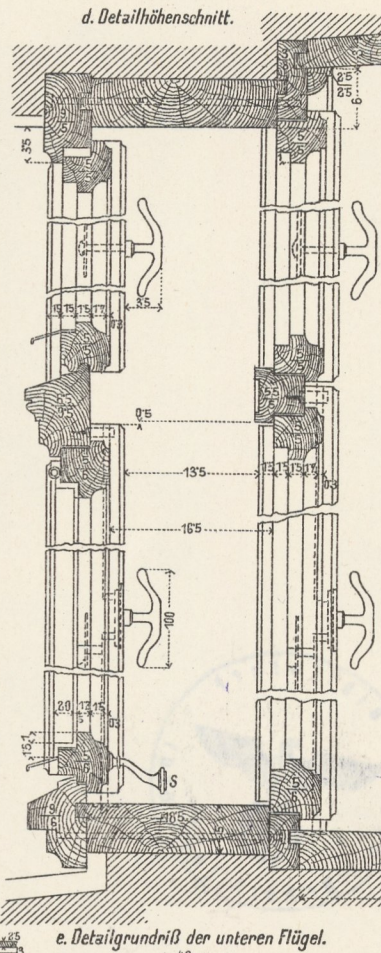
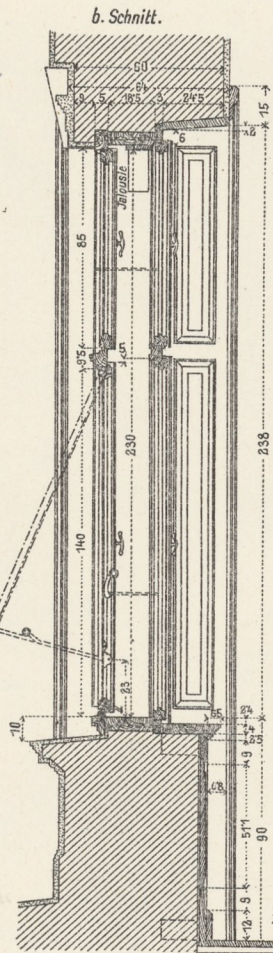
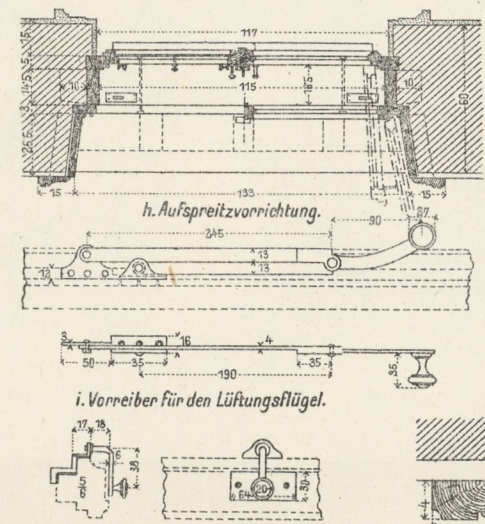
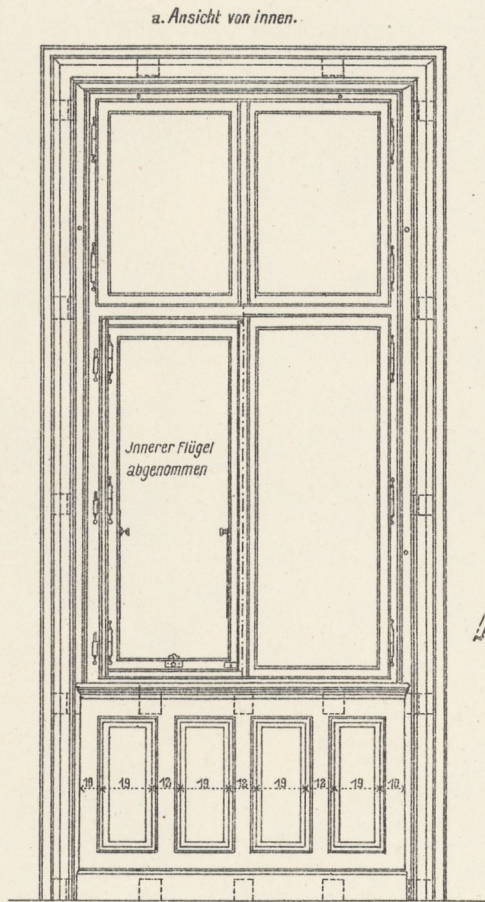
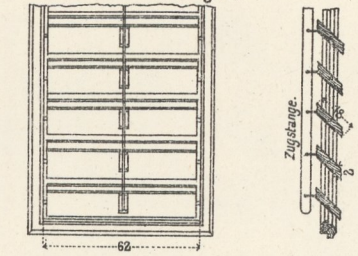


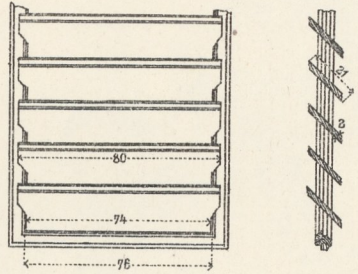
1. Nach innen aufgehendes Fenster mit Spaletverkleidung.



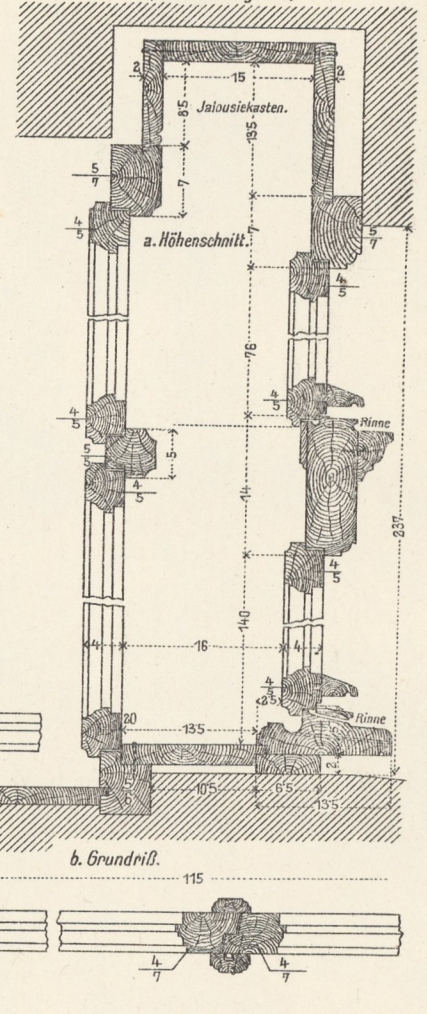
2. Fensterjalousien.
a. beweglich.



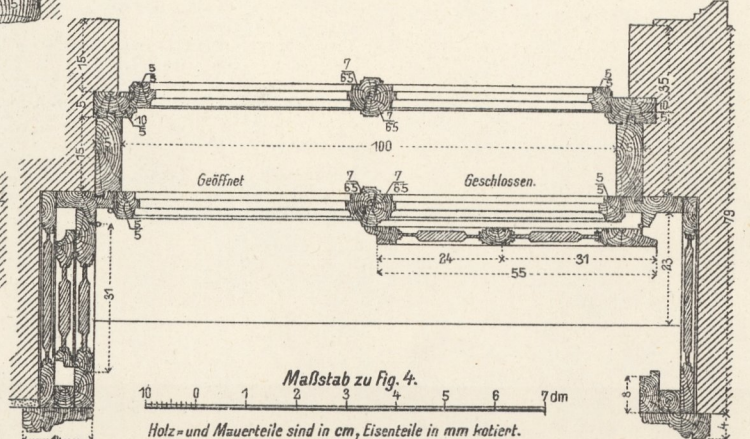
b. mit feststehenden Jalousieblettin.



3. Gegen Schlagregen verschlußsicheres Fenster.
(nach innen aufgehend).



4. Fenster mit Spaletverkleidung und Spaletläden.



Maßstäbe: zu Fig. 1a, b, c, 2a u. b.
cm 10 5 0 2 4 6 8 10 12 dm
zu Fig. 1d-i, 3a u. b. 3dm

Maßstab zu Fig. 4.
10 0 1 2 3 4 5 6 7 dm
Holz- und Mauerteile sind in cm, Eisenteile in mm kotiert.