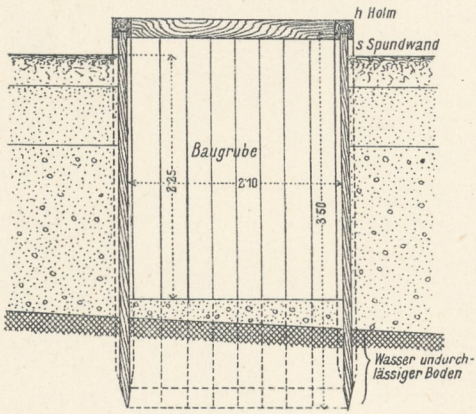
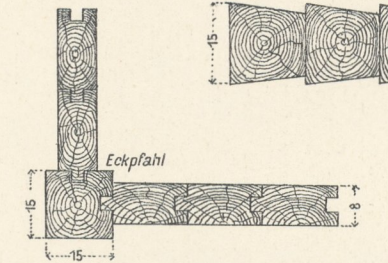


1. Spundwand zur Einschließung der Baugrube.



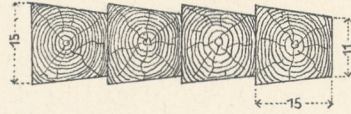
2. Quadratspundung bei Bohlenwänden.



3. Federung bei Bohlenspundwänden.

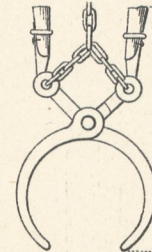
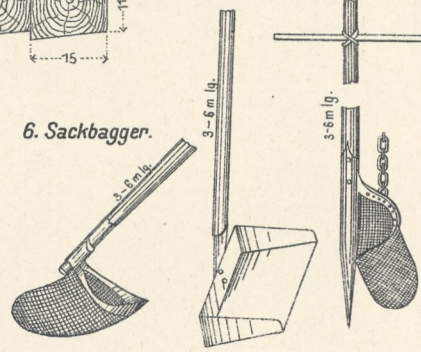


4. Detail der Pfahlwände im Querschnitt.

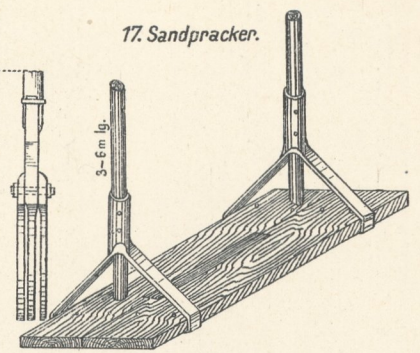


5. Baggerschaufel. 6. Sackbagger. 7. Sackbohren. 8. Teufelsklaue.

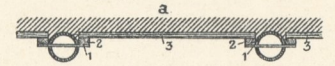
6. Sackbagger.



17. Sandpracker.



9. Absteifen von Baugruben mit eingespülten Eisenrohren.

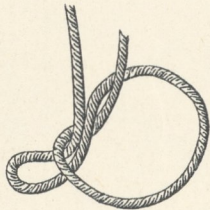


10. Betonsack.

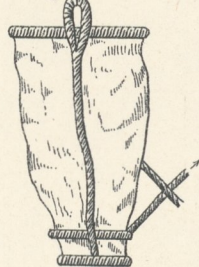
a. unten offen.



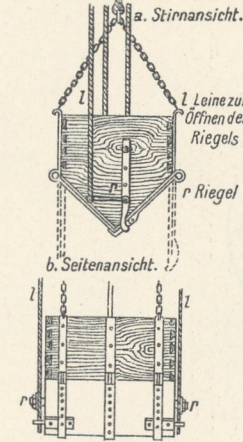
b. Seilschleife.



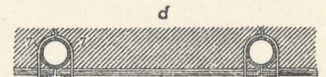
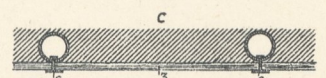
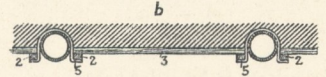
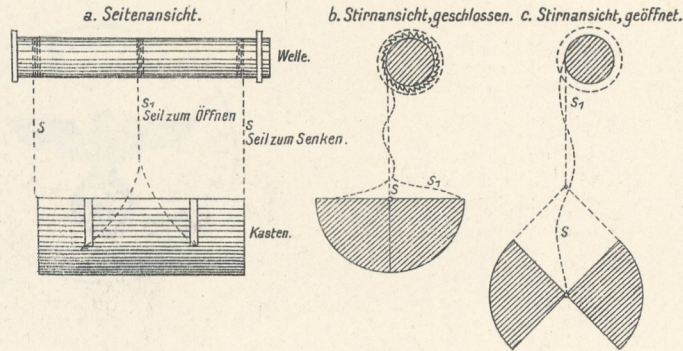
c. unten geschlossen.



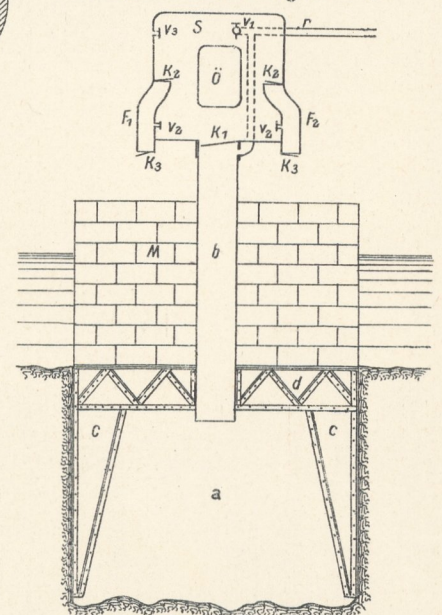
11. Hölzerner Betonkasten.



12. Eiserner Betonkasten.

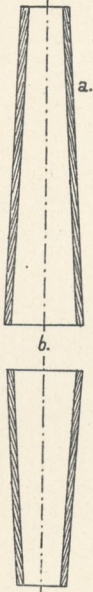


19. Pneumatische Fundierung. (Schema).

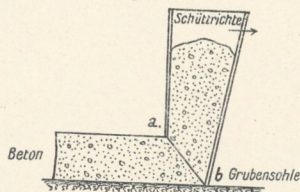


a. Caisson. b. Förderschacht. c. Konsolen u. verst. Blechwände. d. Bleche u. genietete Träger. S. Ein- u. Ausschleußkammer. v. Ventile. K. Klappen. Ü. Einsteigöffnung. F. Material-Förderschläuche. r. Zuleitungsrohr der Luft = Kompressionsmaschine.

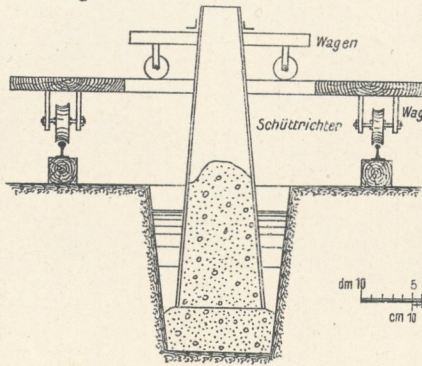
13. Trichterformen für Betonschüttung unter Wasser.



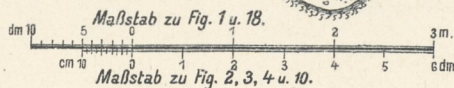
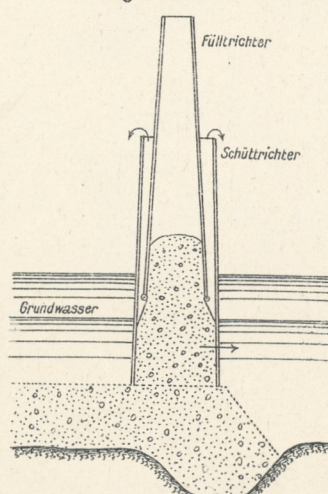
14. Betonschüttung mit schrägem Trichter.



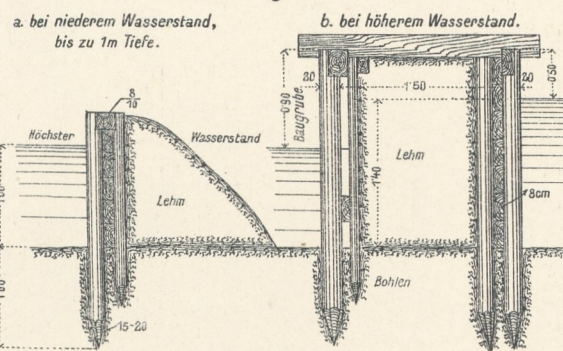
15. Schematische Darstellung der Wagen-gestelle und des Schüttrichters.



16. Füllung des Schüttrichters bei Betonschüttungen mit dem Fülltrichter.



18. Fangdämme.



Grundriß zu b.

