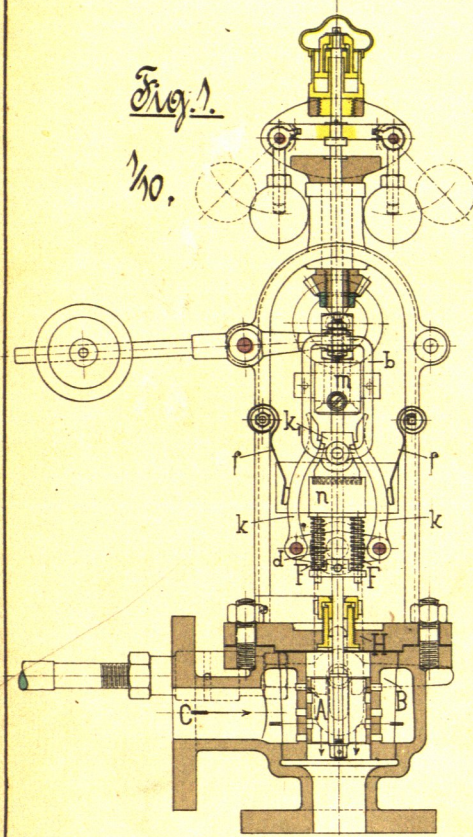


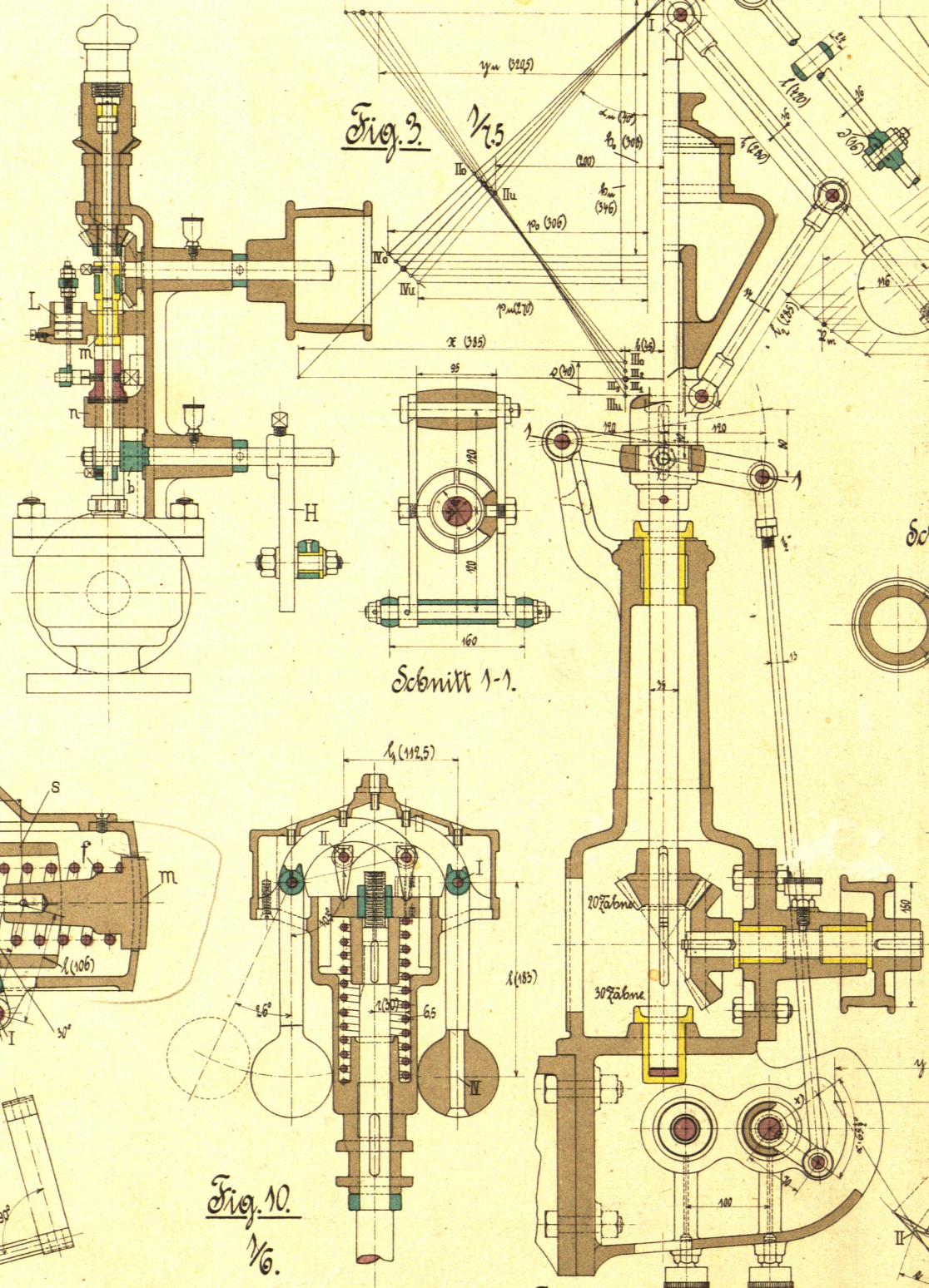
Regulatoren:

Fig. 1.



1/10.

Fig. 2.

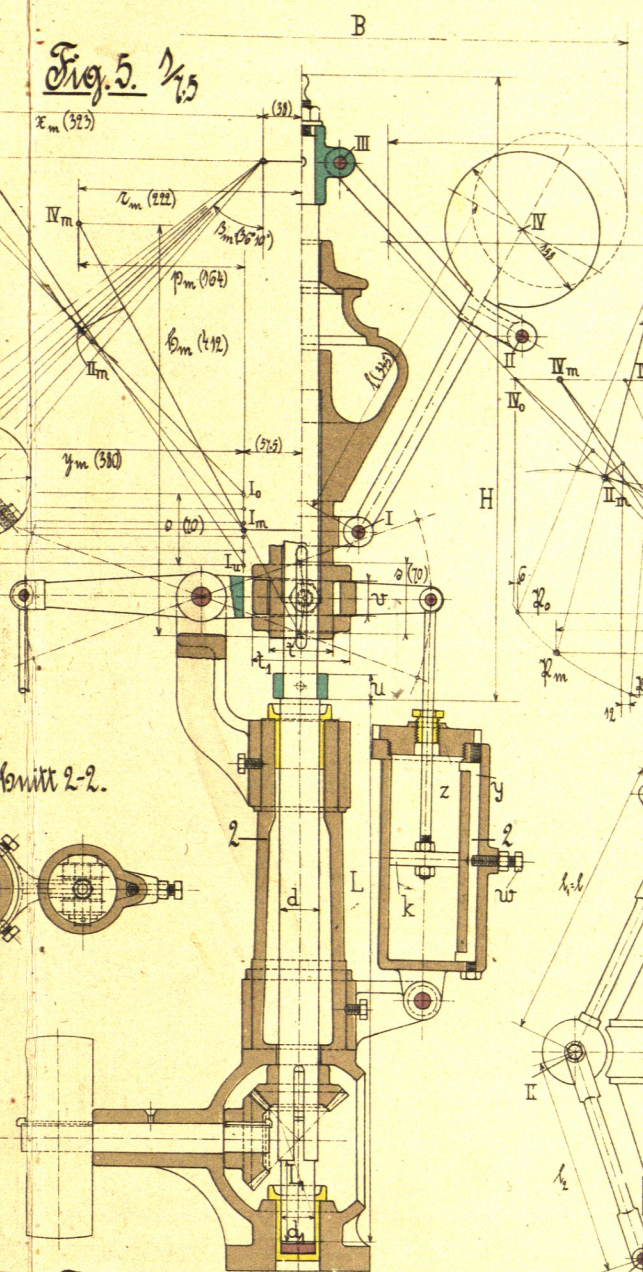


1/5.

Schnitt 1-1.

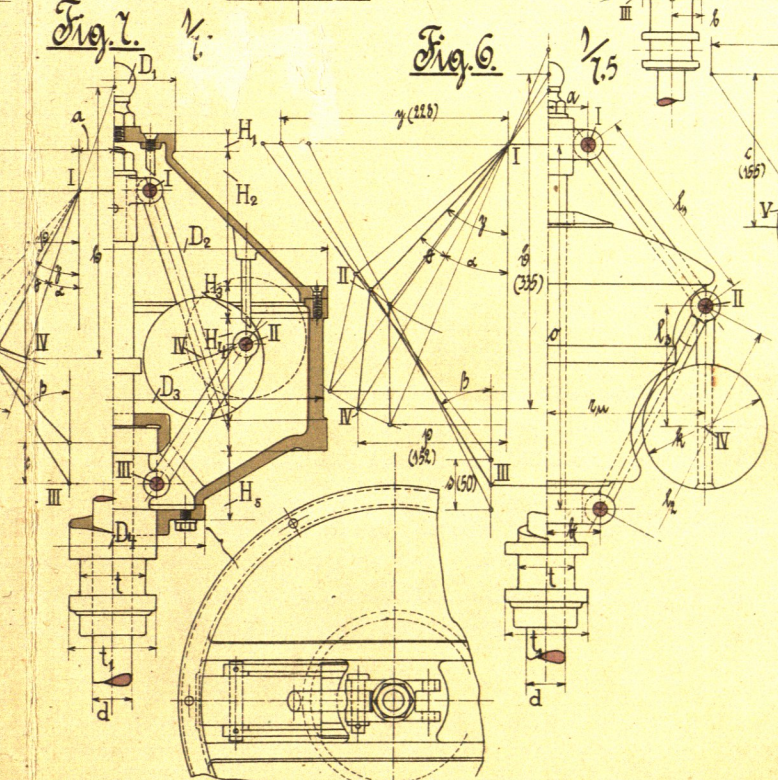
Schnitt 2-2.

Fig. 5.



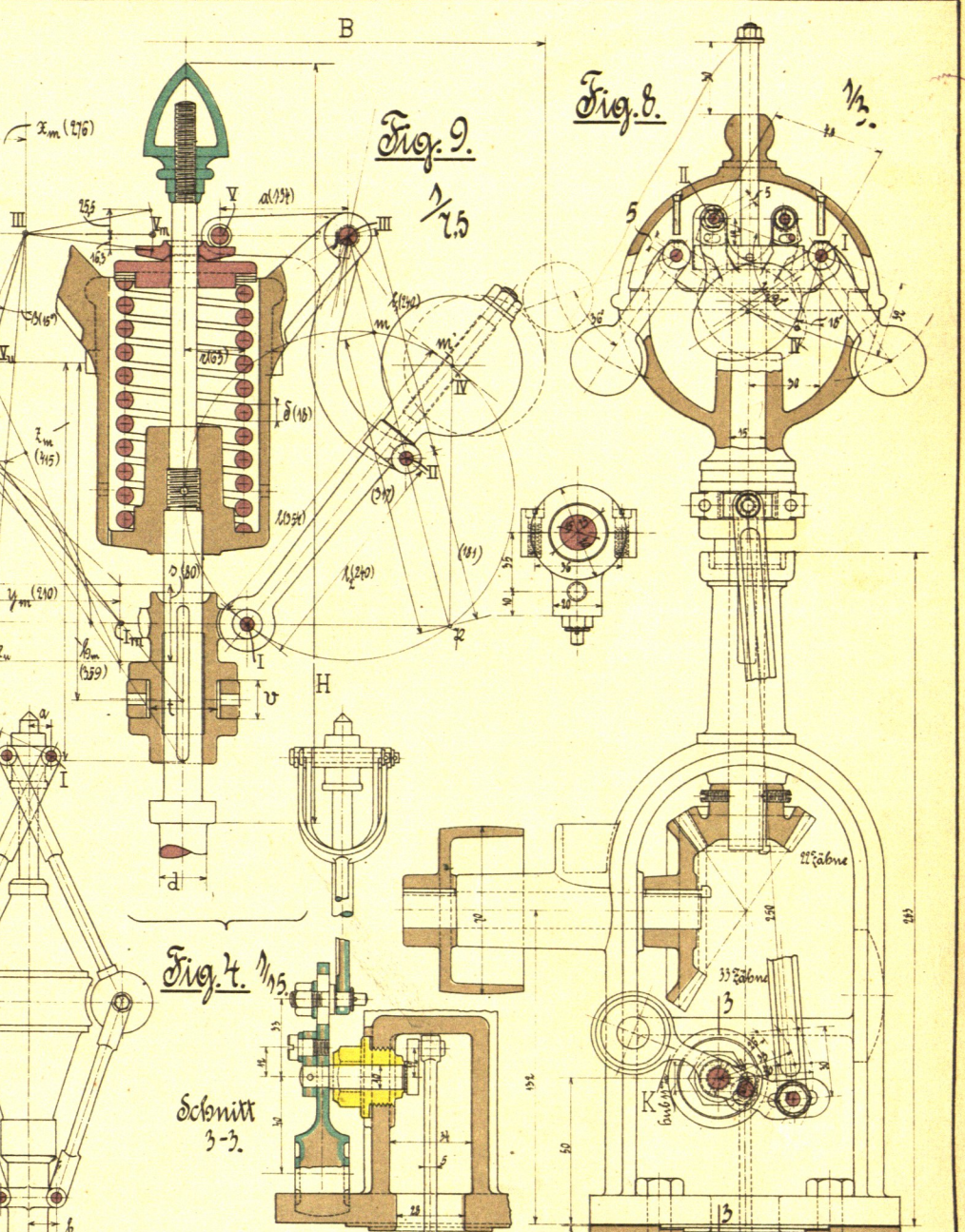
1/5.

Fig. 6.



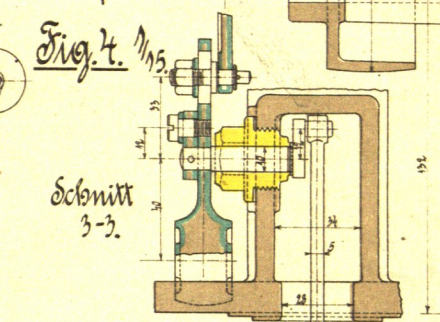
1/5.

Fig. 9.



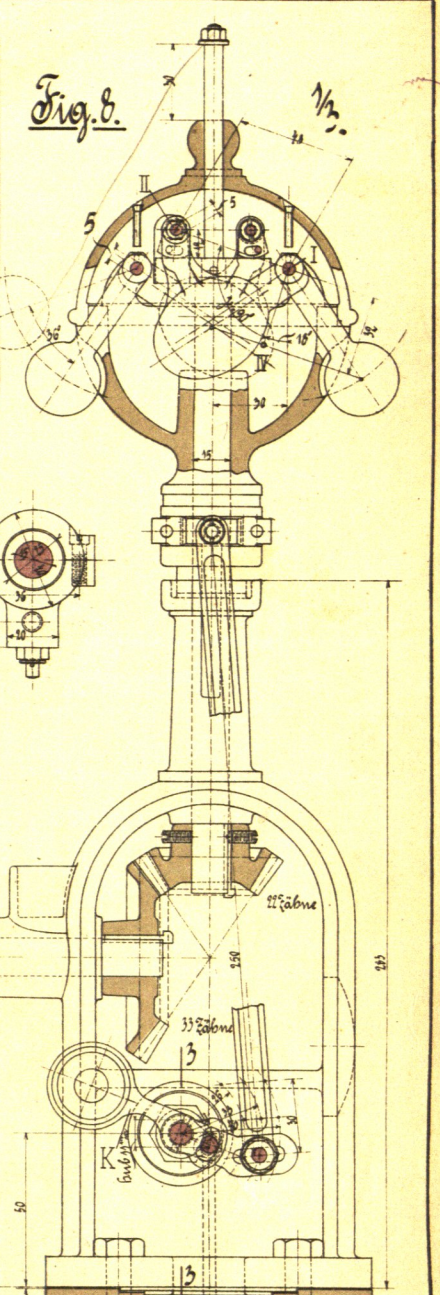
1/5.

Fig. 4.



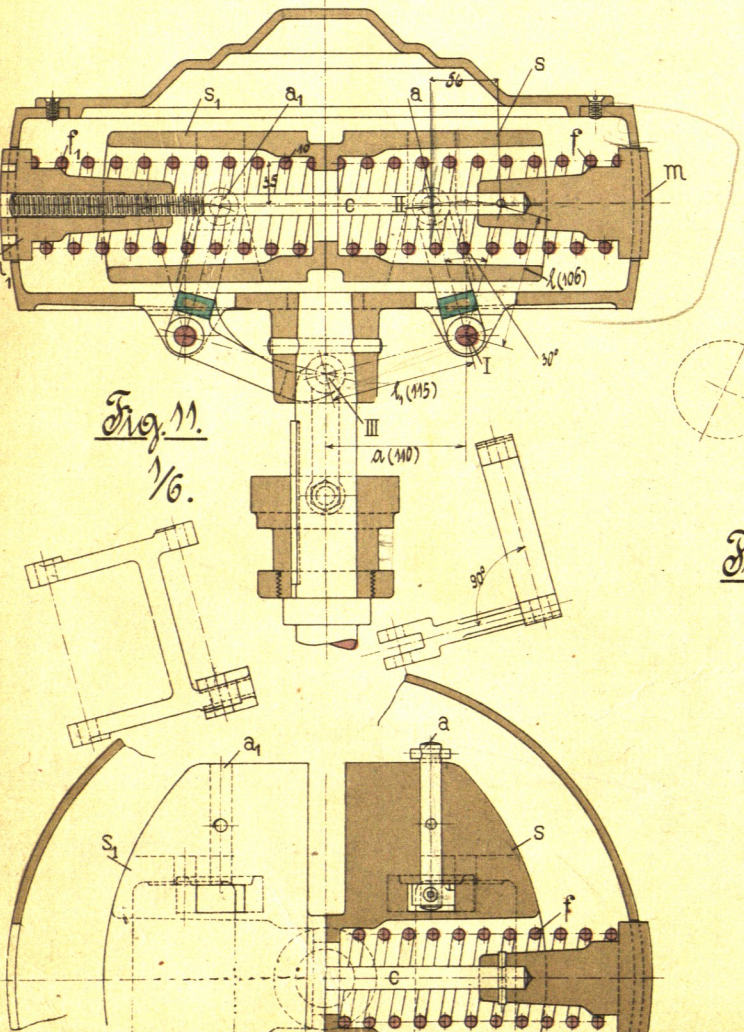
Schnitt 3-3.

Fig. 8.



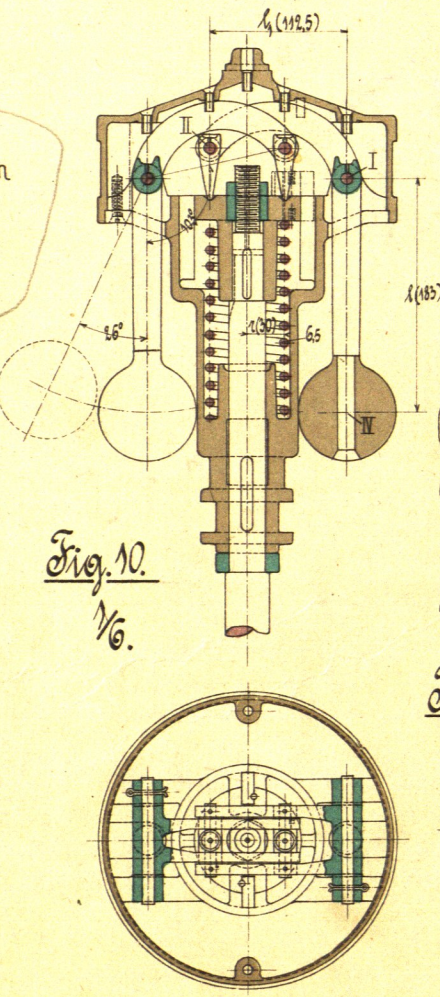
1/5.

Fig. 11.



1/6.

Fig. 10.



1/6.

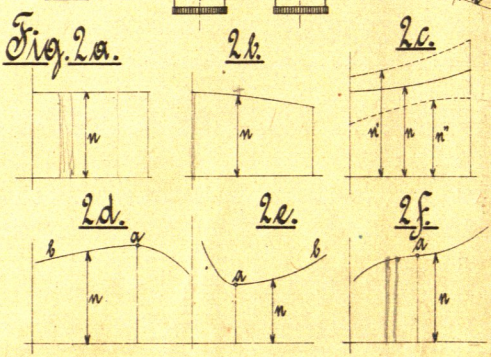


Fig. 2a.

2b.

2c.

2d.

2e.

2f.

*) Die auf Tafel 50 in Fig. 5 angegebene größere Bestelllänge ist durch einen stärkeren Regulator mit größerem Rube bedingt.