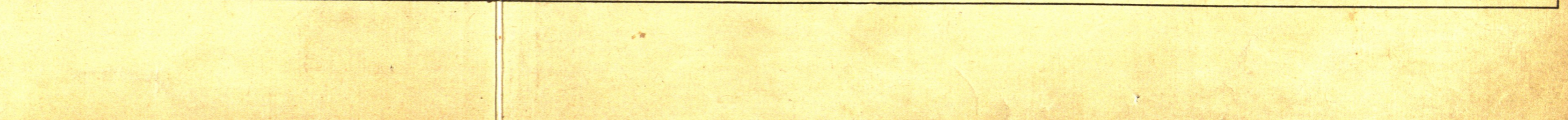
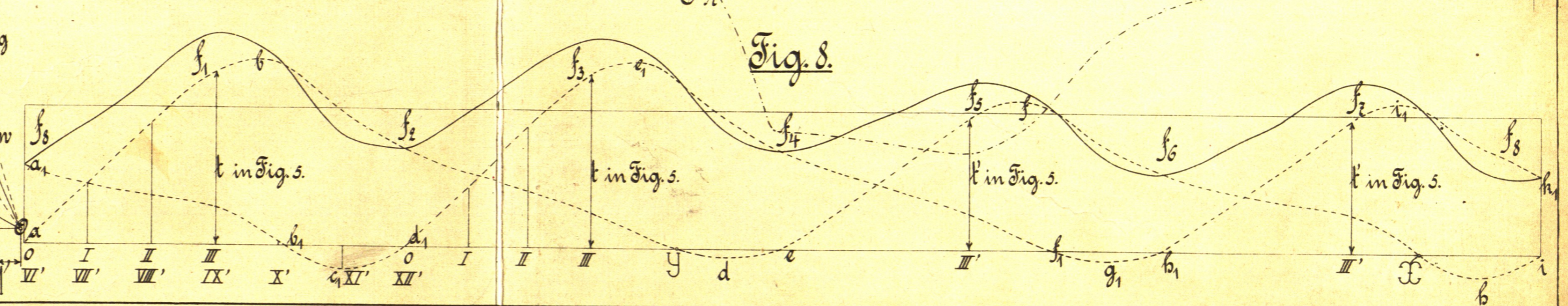
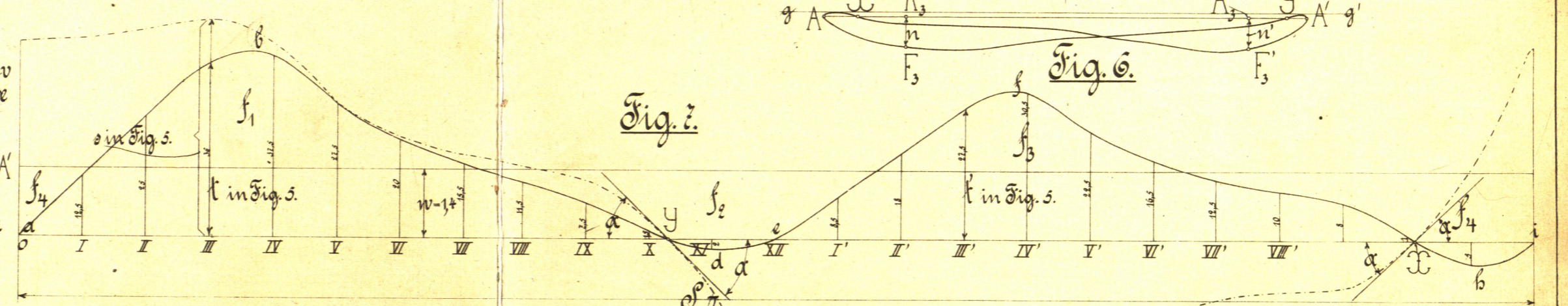
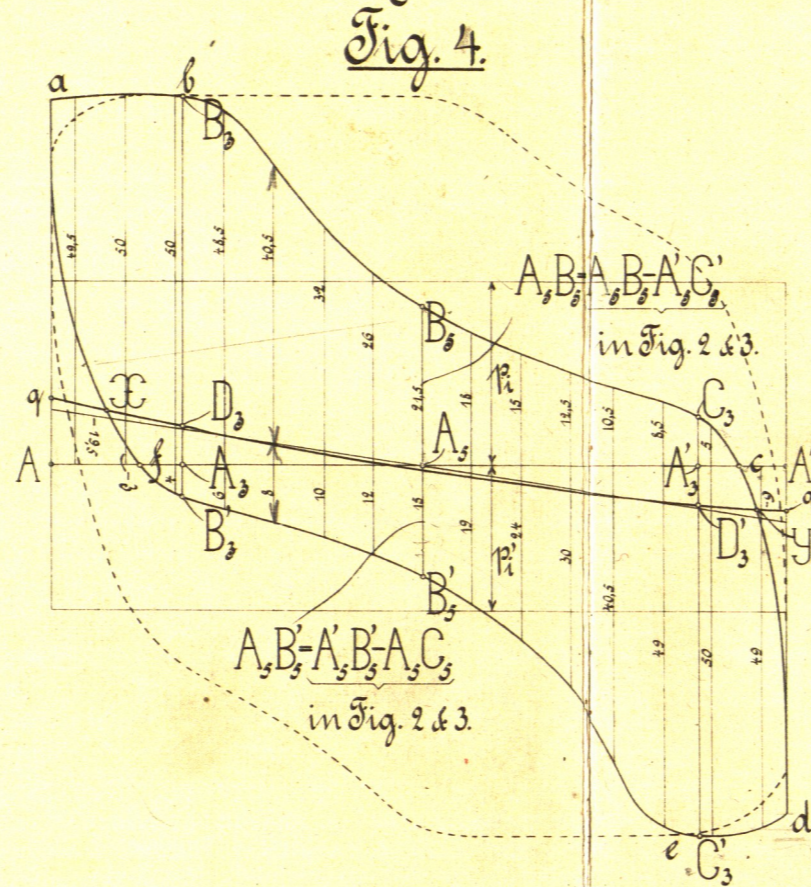
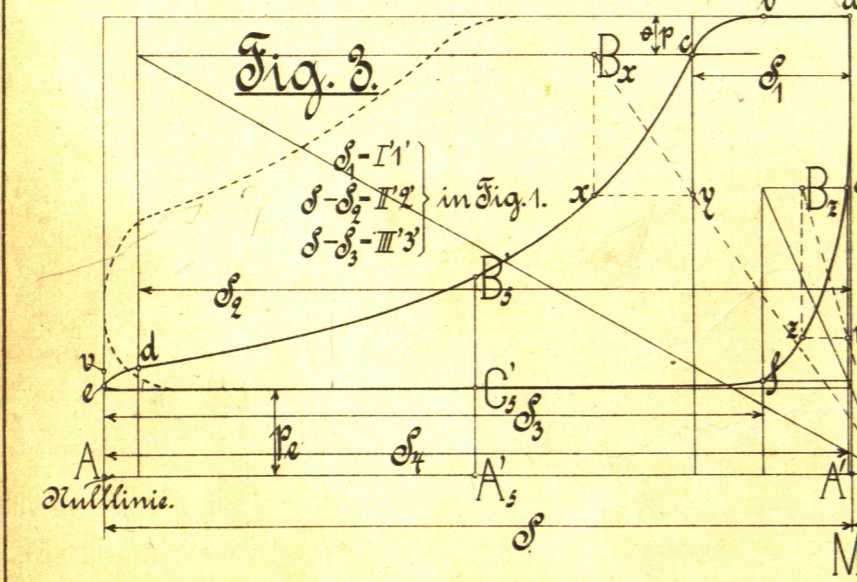
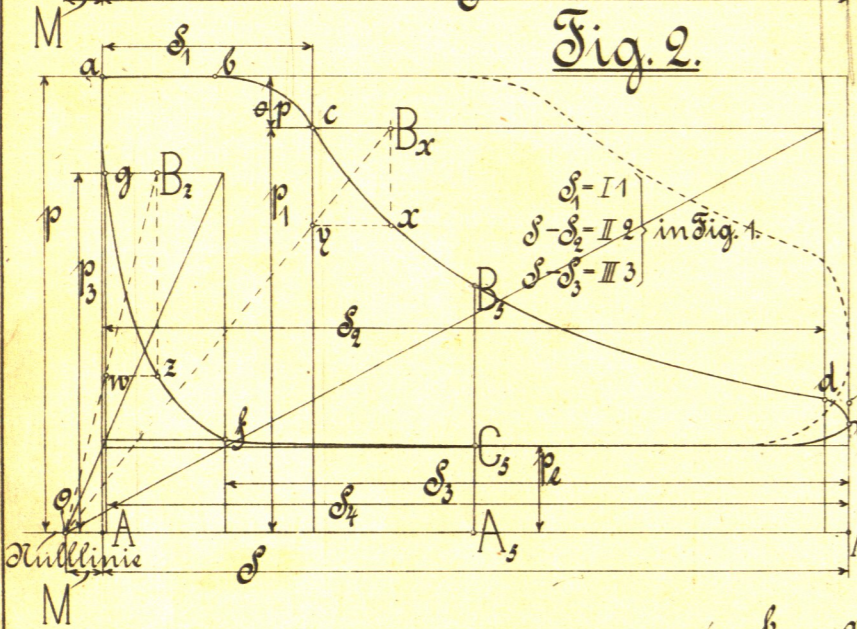
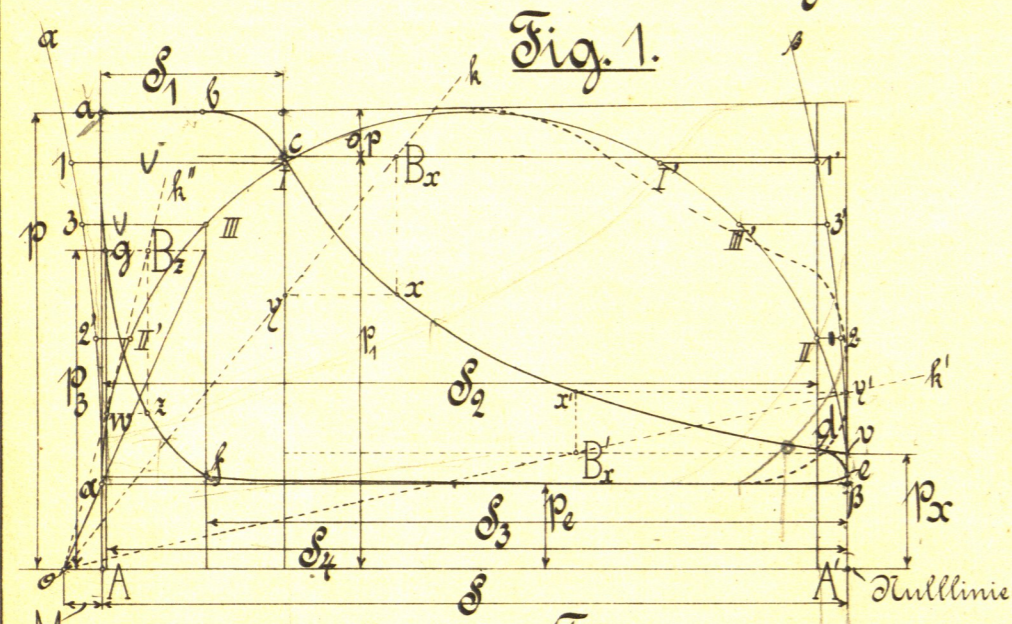


# Arbeits- und Druck-Diagramme einer Einzylinder- & Zwillingsmaschine. Kräftemaßstab: 10mm=1kg,

Kolbenhub  $\delta = 100\text{mm}$ ,  
Schäd. Raum  $M = 0,05\delta = 5\text{mm}$ .



in Fig. 5  $\begin{cases} A_3 B_3 = D_3 B_3 \\ A_3 B_3 = D_3 B_3 \end{cases}$  in Fig. 4.  
 $III = A_3 B_3$  in Fig. 5.  
 in Fig. 5  $\begin{cases} A_3 C_3 = C_3 D_3 \\ A_3 C_3 = C_3 D_3 \end{cases}$  in Fig. 4.  
 $III = A_3 C_3$  in Fig. 5.