

Regulatoren

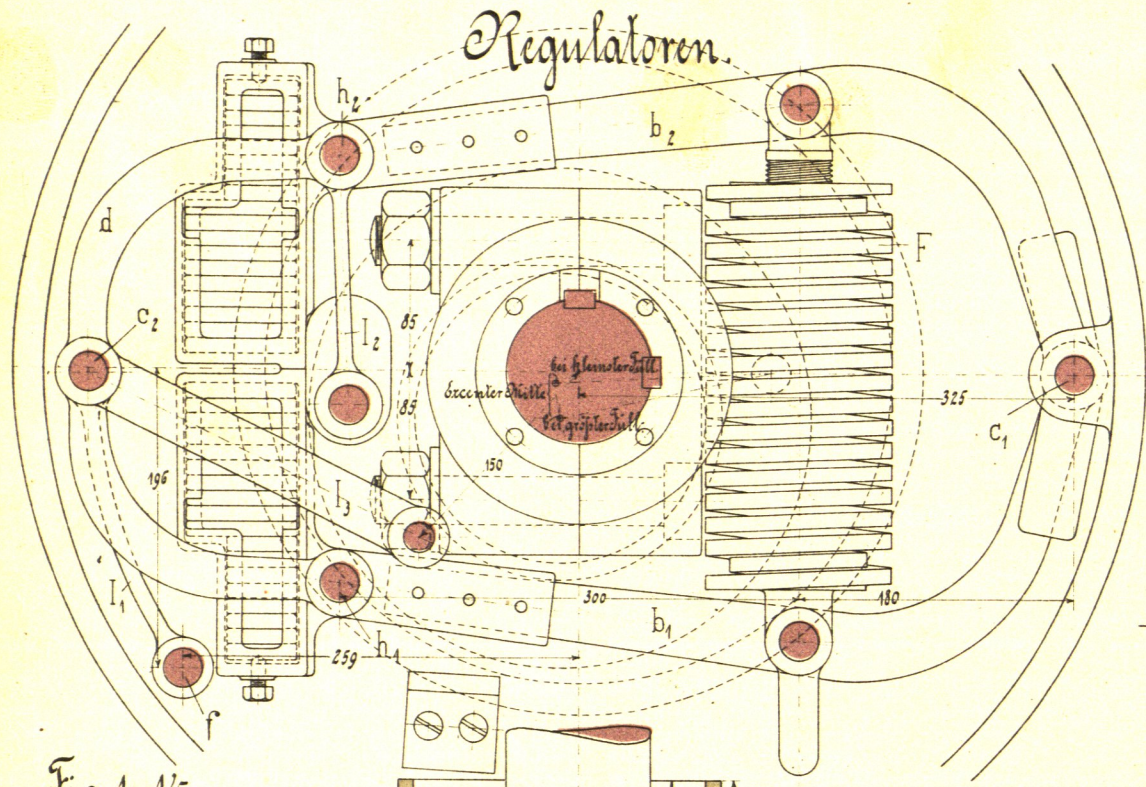


Fig. 1. 1/5.

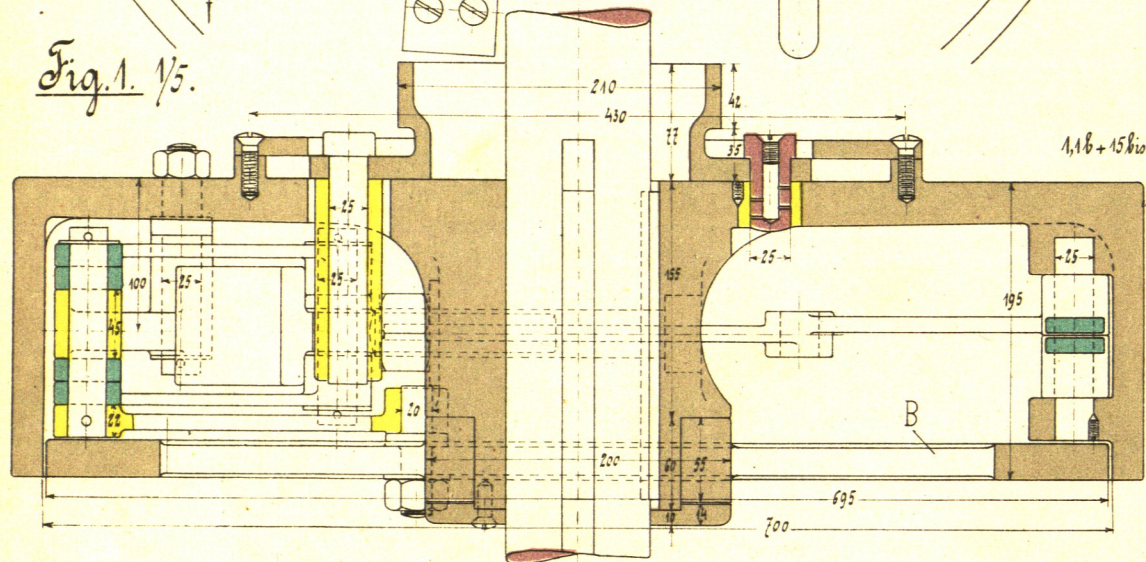


Fig. 2. 1/12.5.

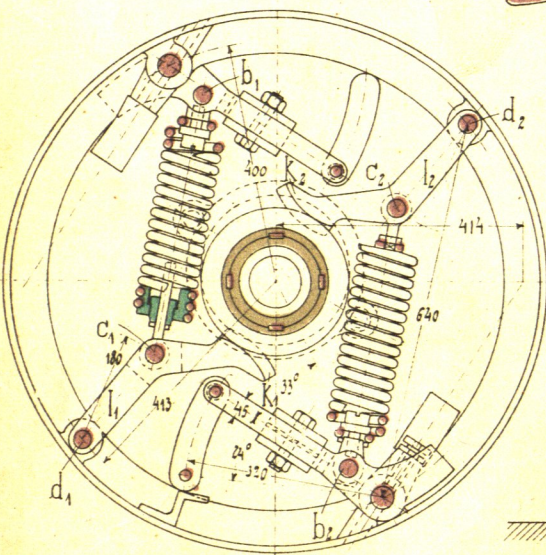
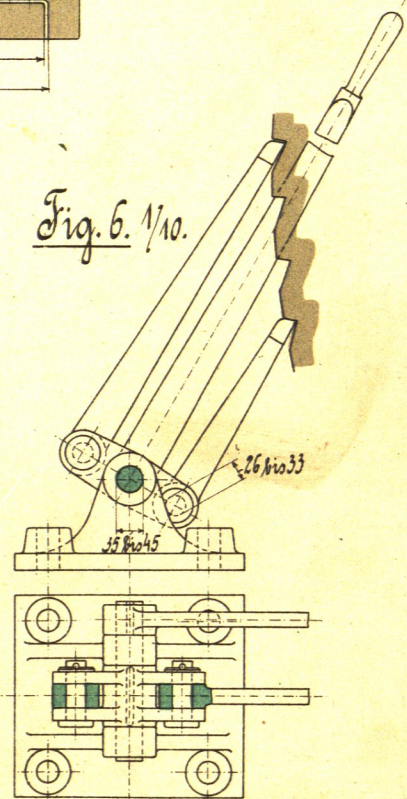


Fig. 6. 1/10.



Schwungräder

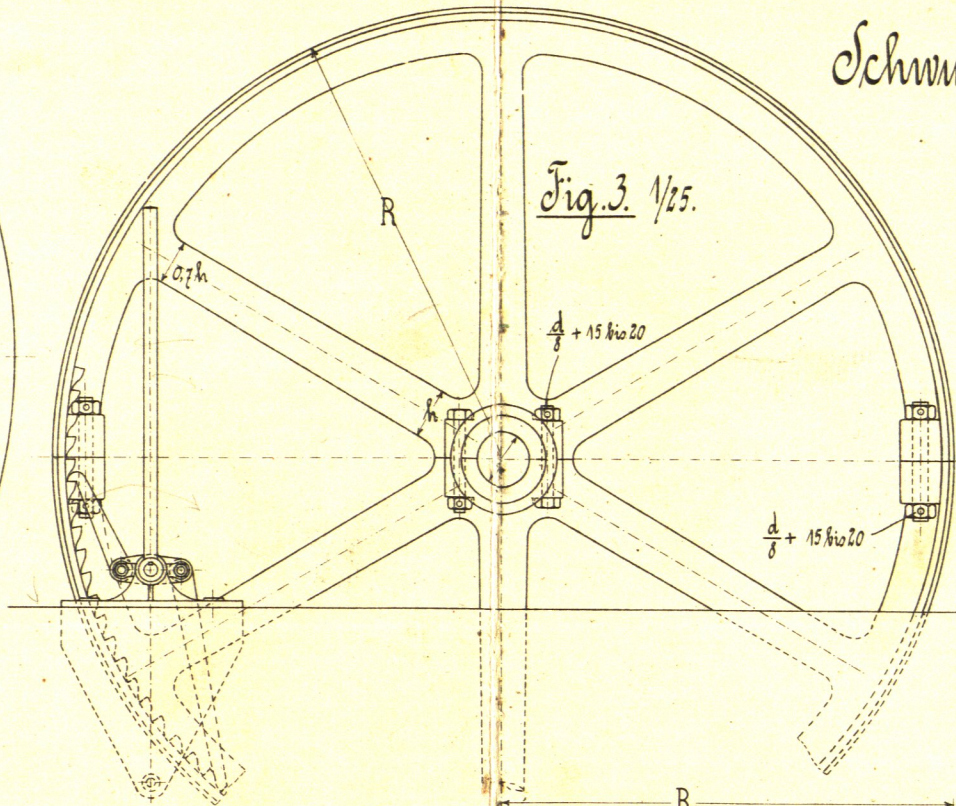


Fig. 3. 1/25.

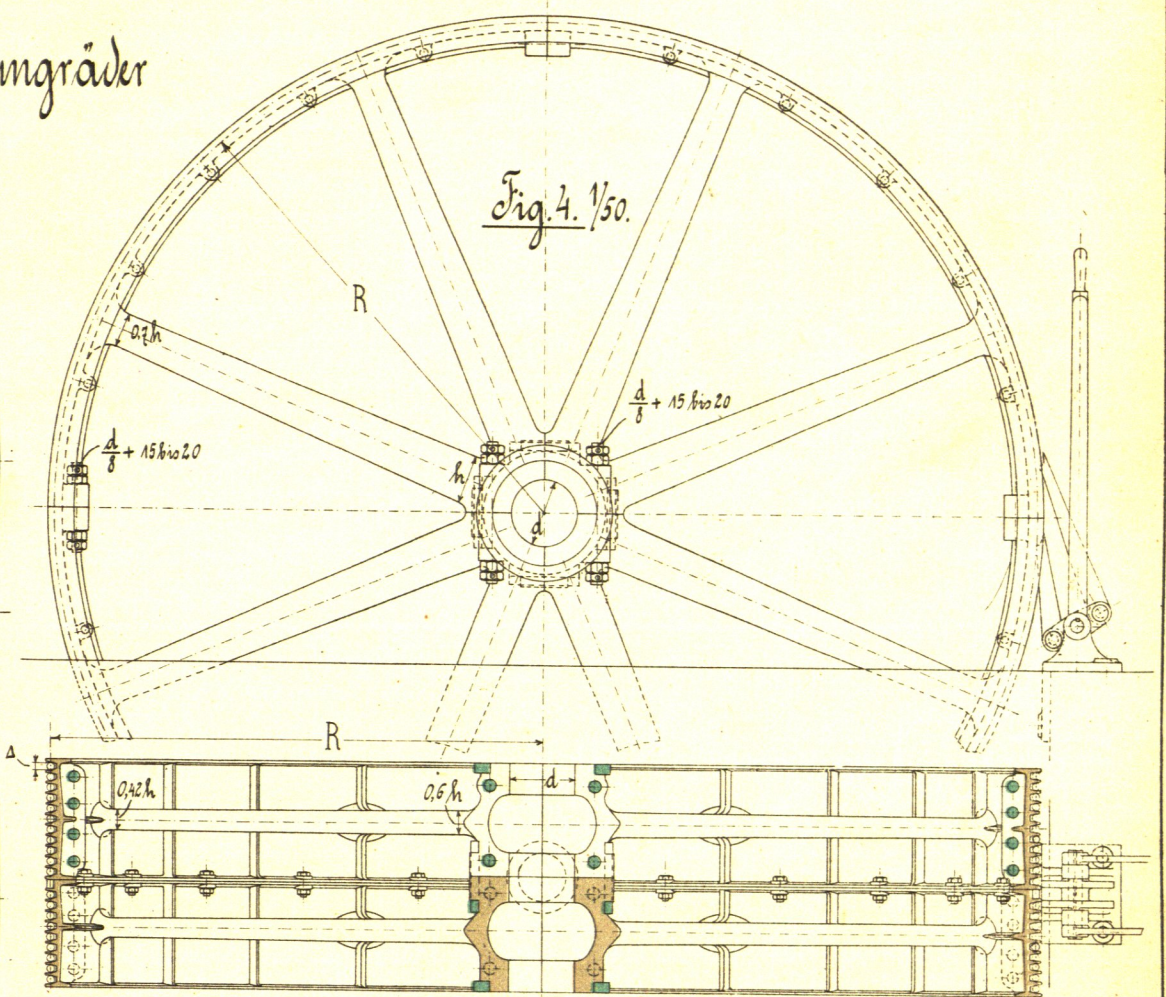


Fig. 4. 1/50.

Fig. 7a. 1/7.5.

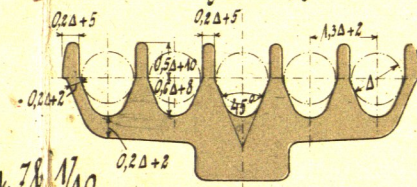


Fig. 7b. 1/10.

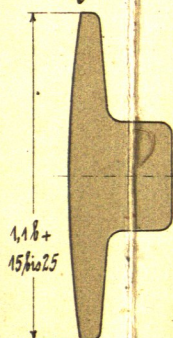
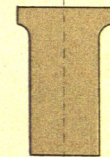


Fig. 7c. 1/10.



R = Radius in mm, A = Armzahl, d = Bohrung in mm.
 A = 4 bis 6 für R < 1500, A = 6 bis 8 für R > 1500.

Armhöhe an der Pleche: Schwungräder mit Plechen: Schwungräder mit Hanfseilen:
 b Breite } der Pleche in mm, i Zahl der Seile,
 Δ Dicke } in mm, Δ Dicke - - in mm,

$$h = 165 \sqrt{R \cdot \Delta} \quad h = 1.25 \sqrt{R \cdot i \cdot \Delta^2}$$

Schwungräder ohne Plechen und Seile:
 f Flankenquerschnitt in qmm,
 n Umdrehungszahl in der Minute,

$$h = \frac{R}{350} \sqrt{\frac{n \cdot f}{A}}$$

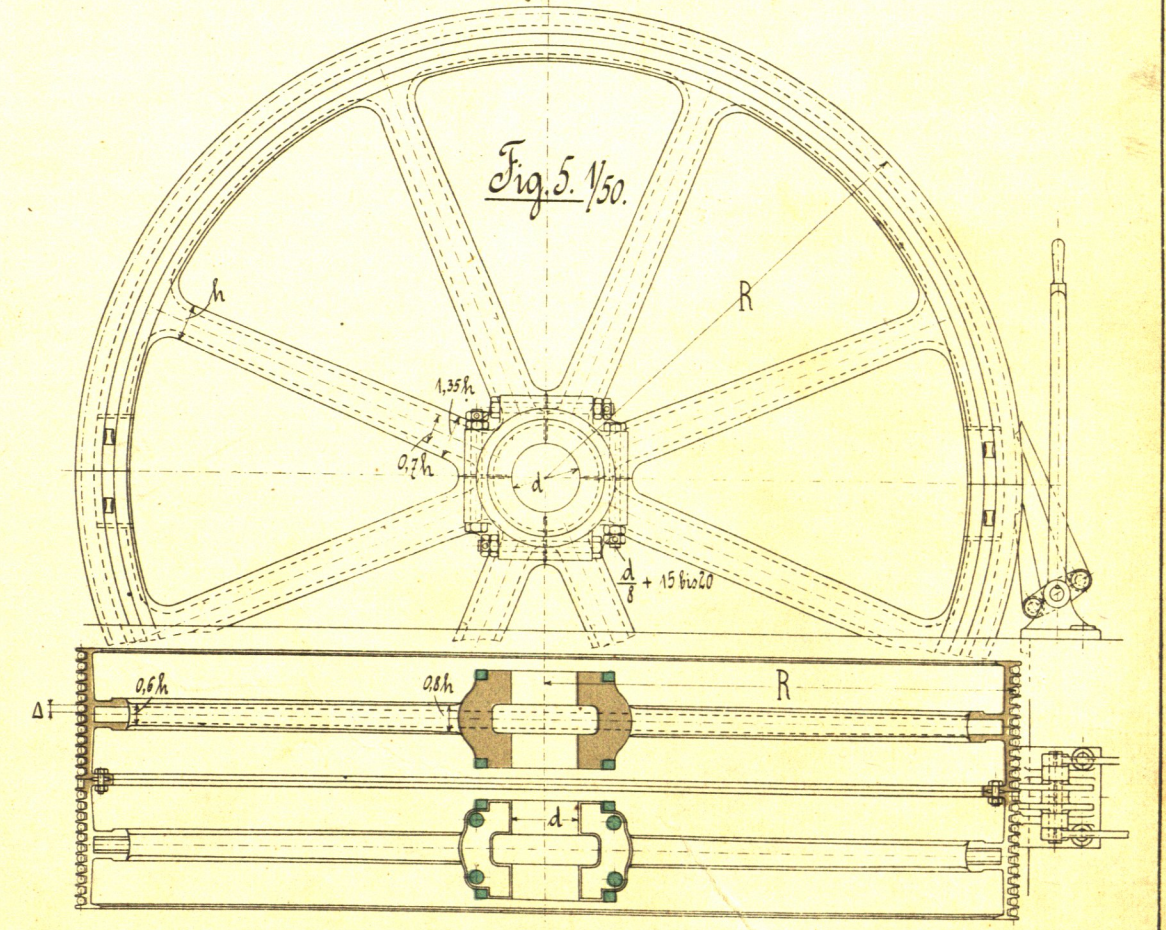


Fig. 5. 1/50.