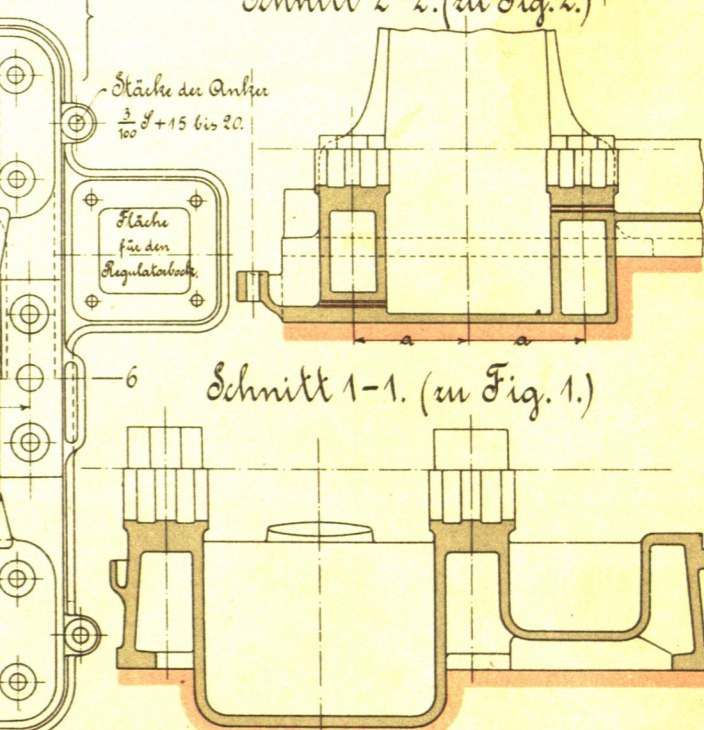
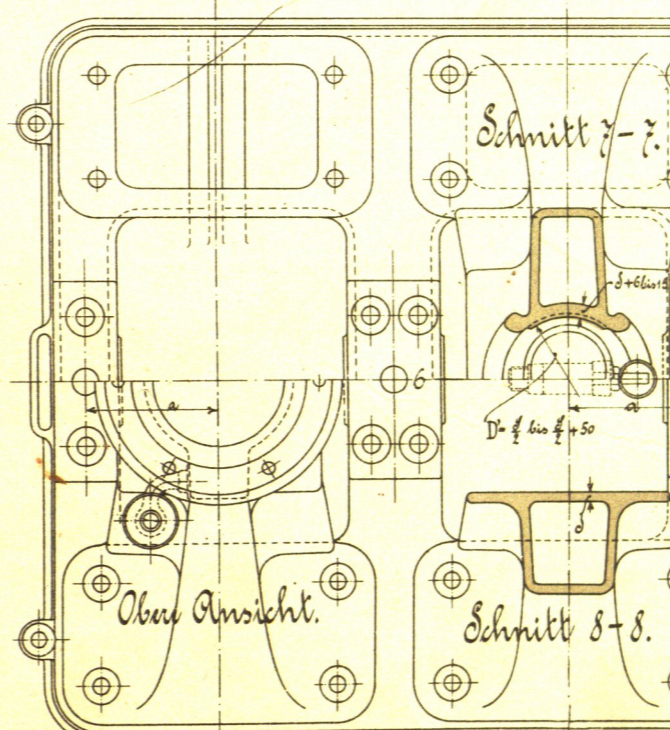
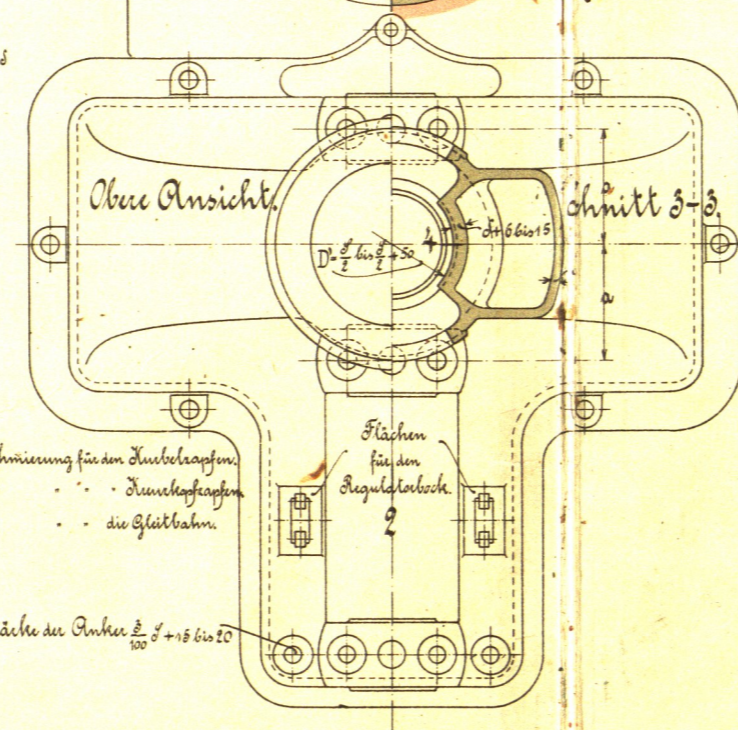
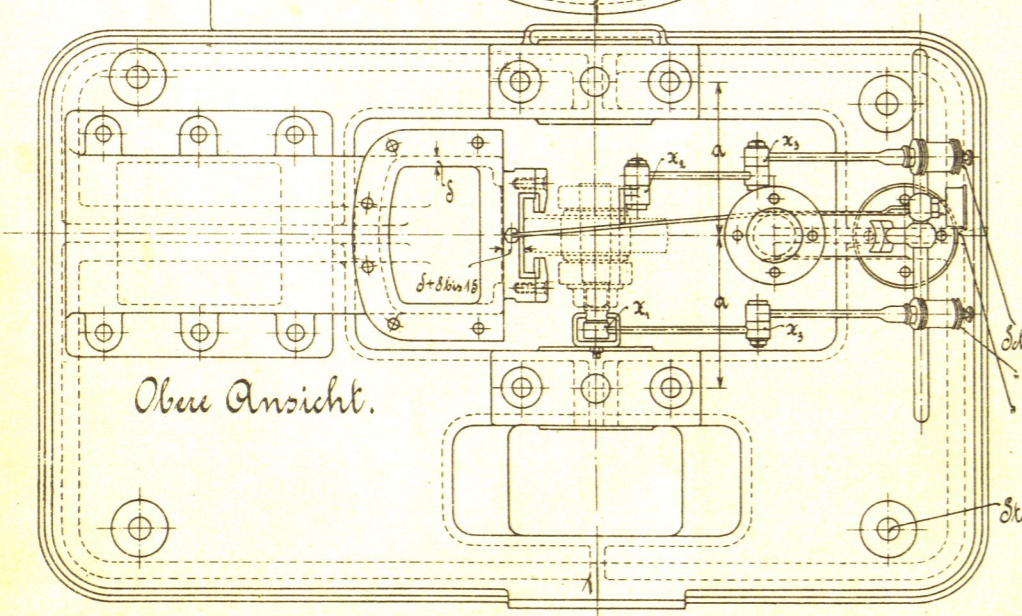
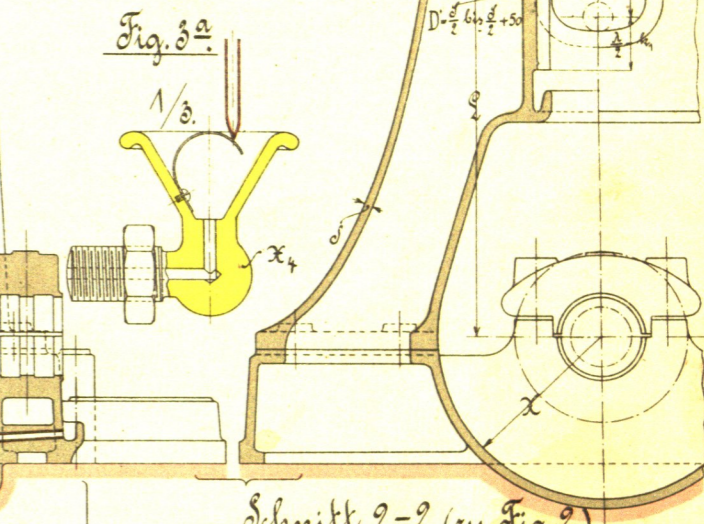
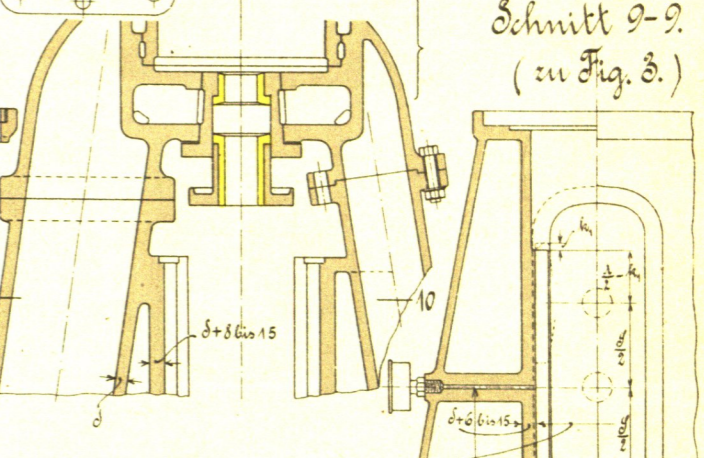
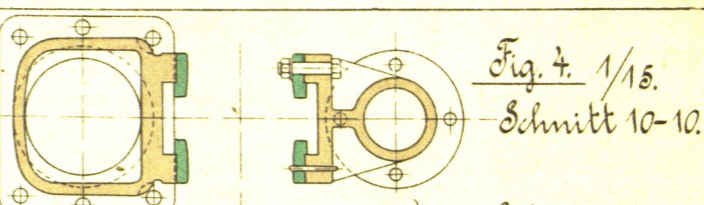
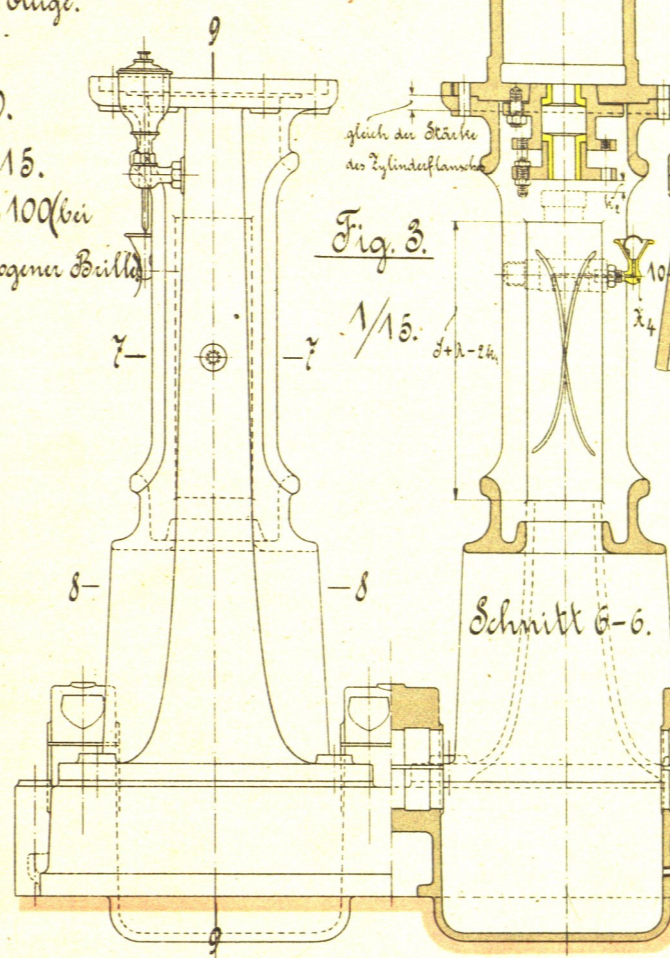
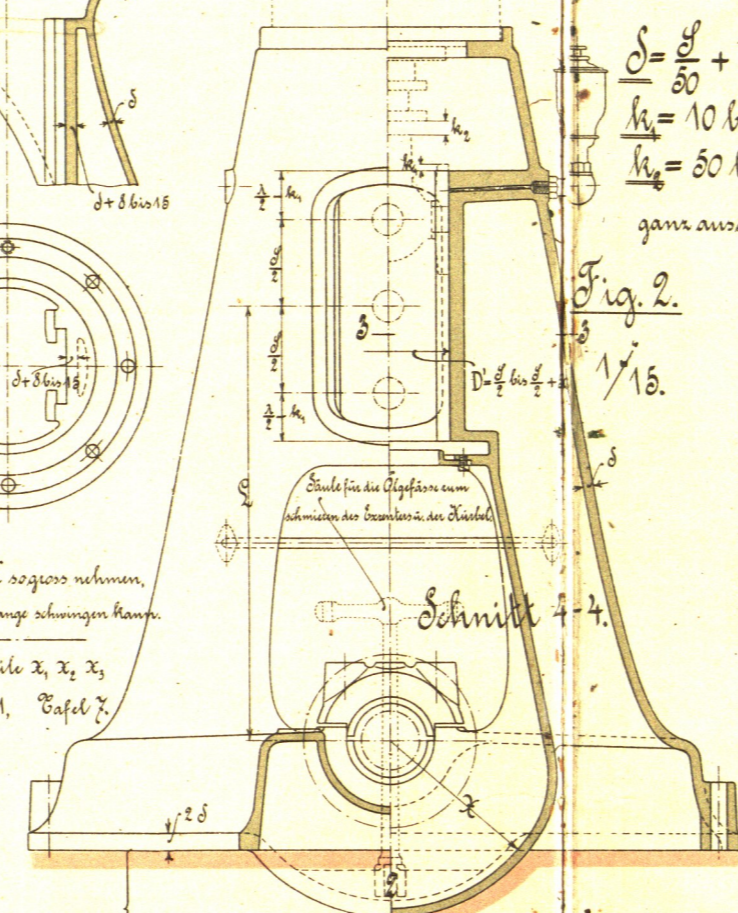
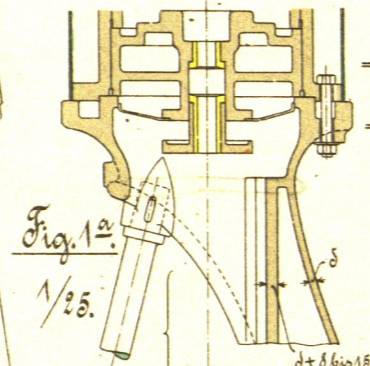
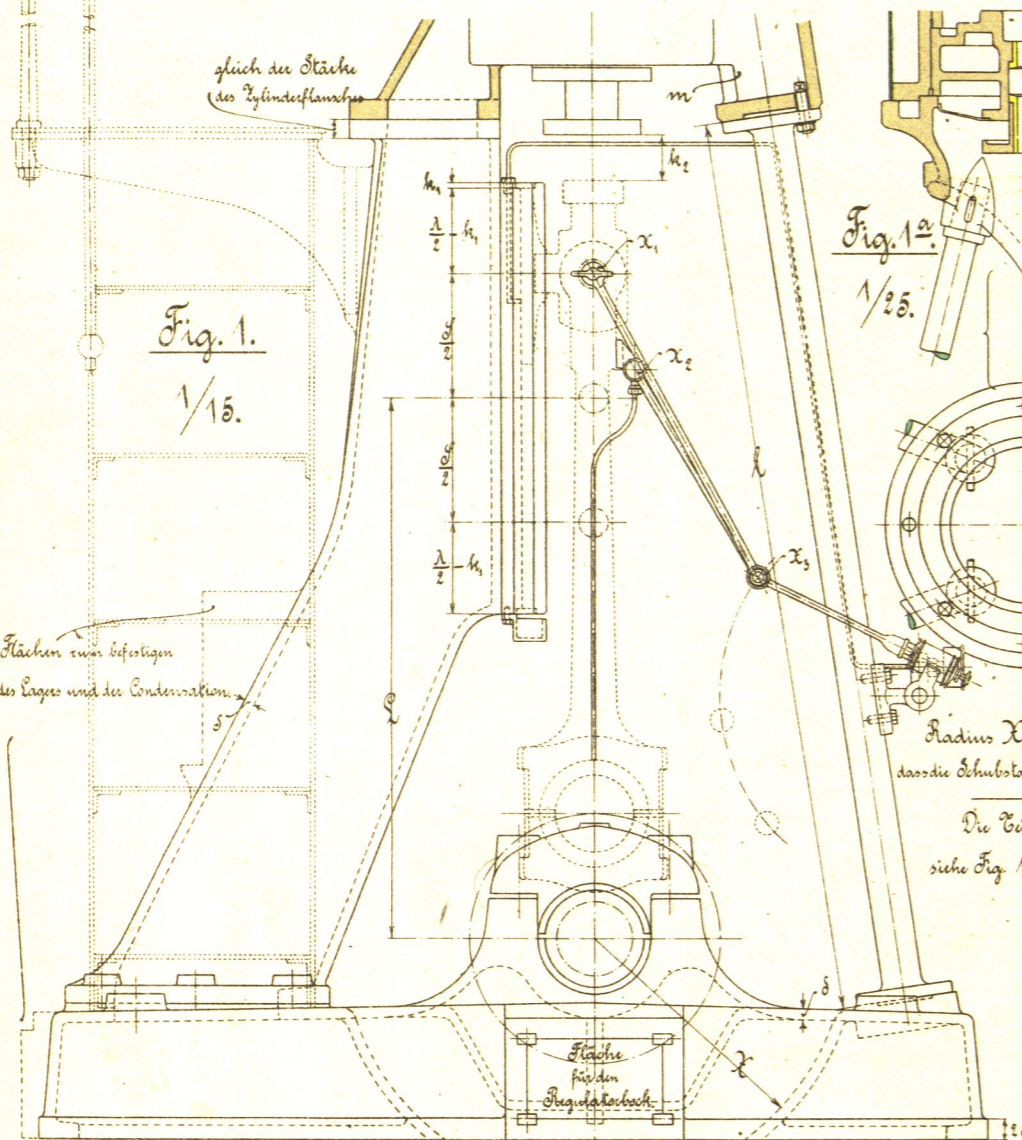


Rahmen mit ebener und runder Führung für stehende Maschinen.

Λ = Länge der Kreuzkopfschleifer.
 S = Kolbenhub.
 D = Bohrung der Führung.

a = Abstand von Mitte Kreuzkopfs bis Mitte Kurbellager.
 L = Schubstangenlänge von Mitte bis Mitte Auge.



D' bei Mehrfach-Expansionsmaschinen mindestens gleich der Bohrung des kleinen Zylinders.