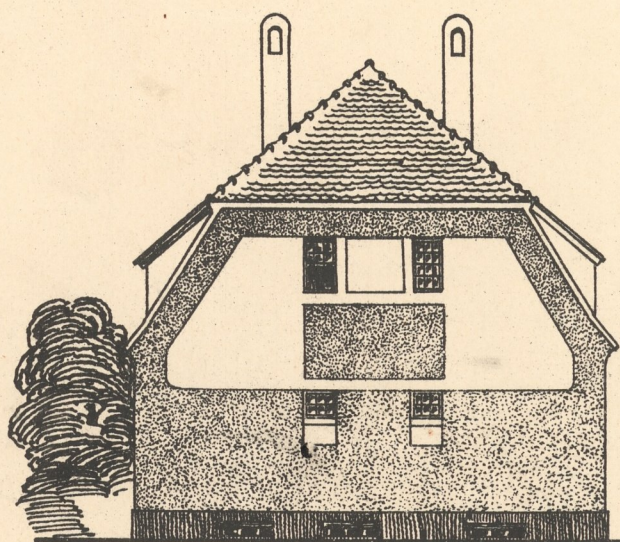
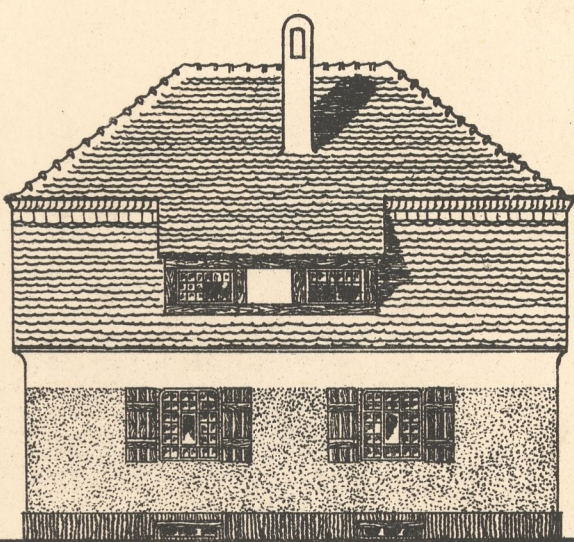


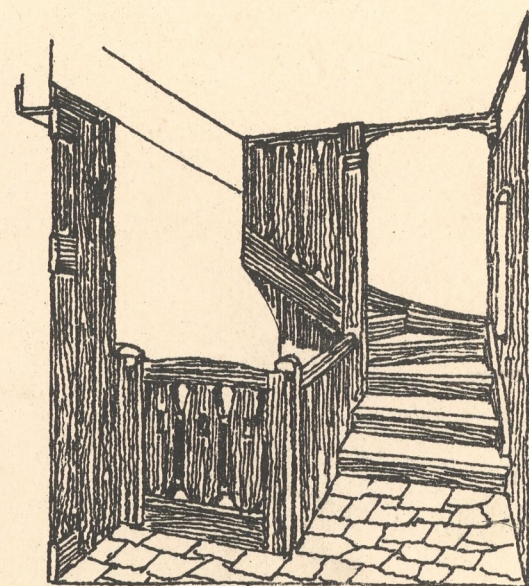
ENTWURF ZU EINEM ARMENHAUS



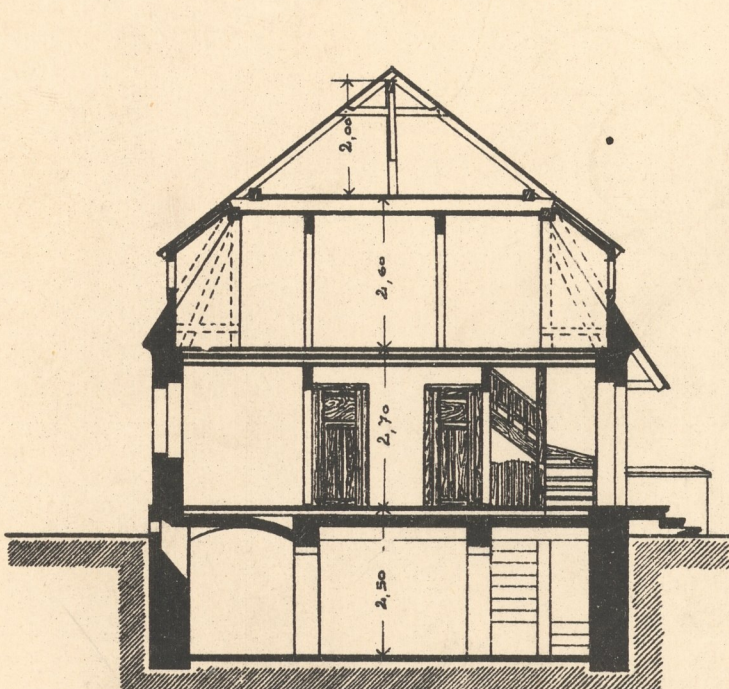
WESTSEITE



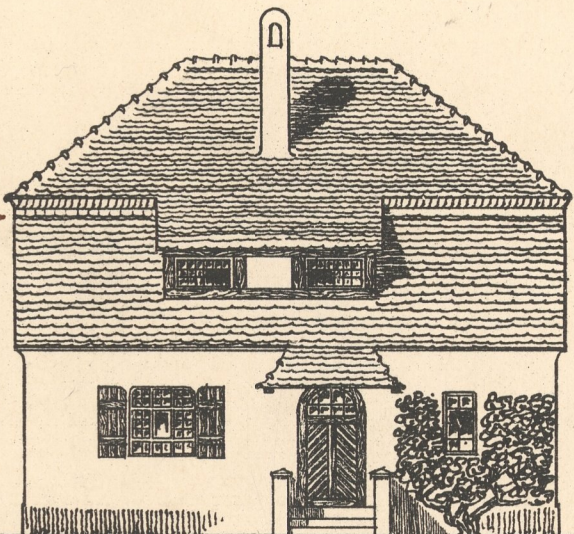
HINTER-ANSICHT



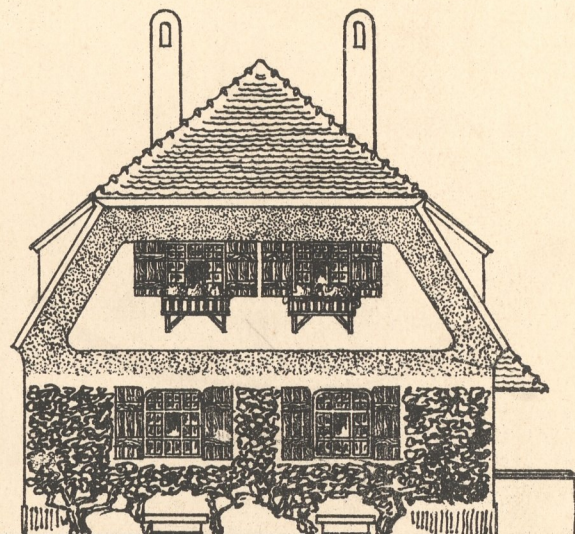
TREPPENHAUS



SCHNITT A-B

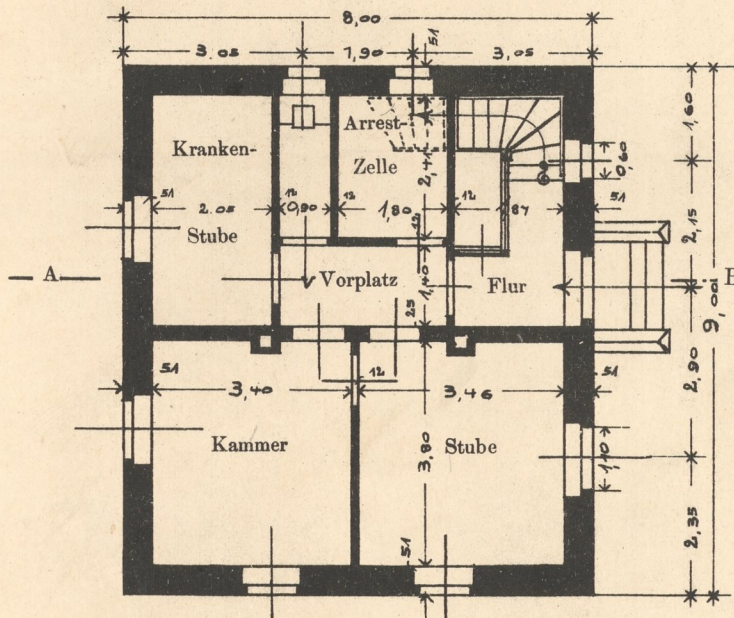
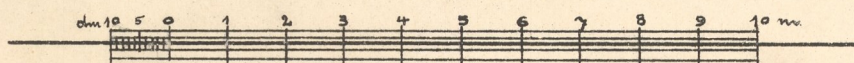


STRASSEN-ANSICHT

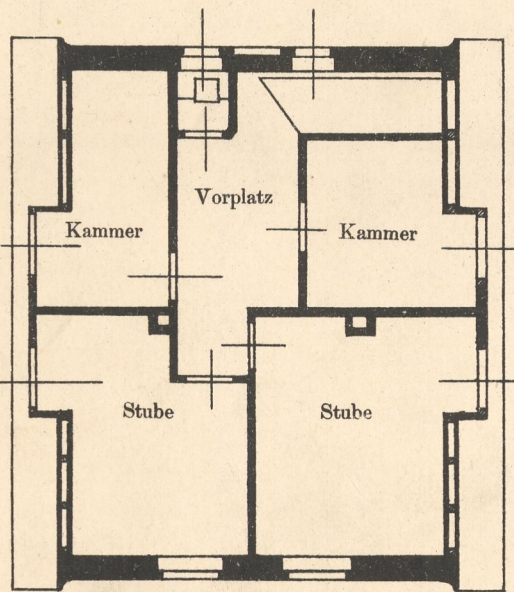


OSTSEITE

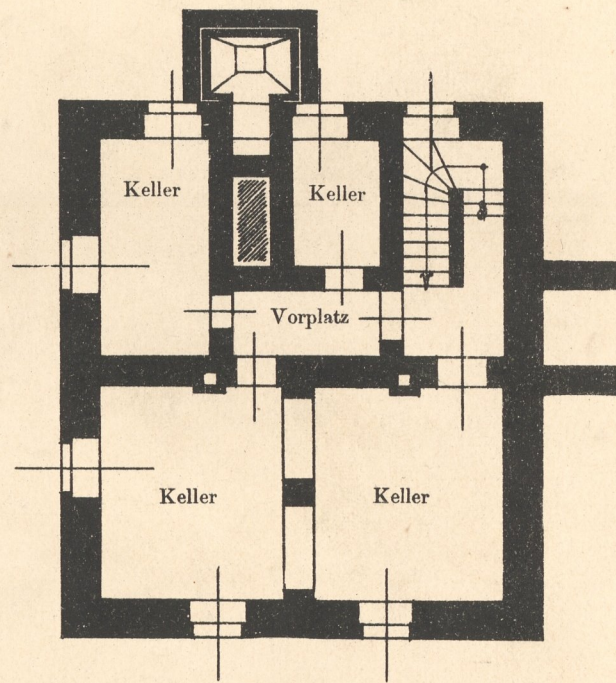
Baukosten:
500 cbm umbauter Raum à cbm 14 M. = 7000 M.



ERDGESCHOSS



OBERGESCHOSS



KELLERGESCHOSS

