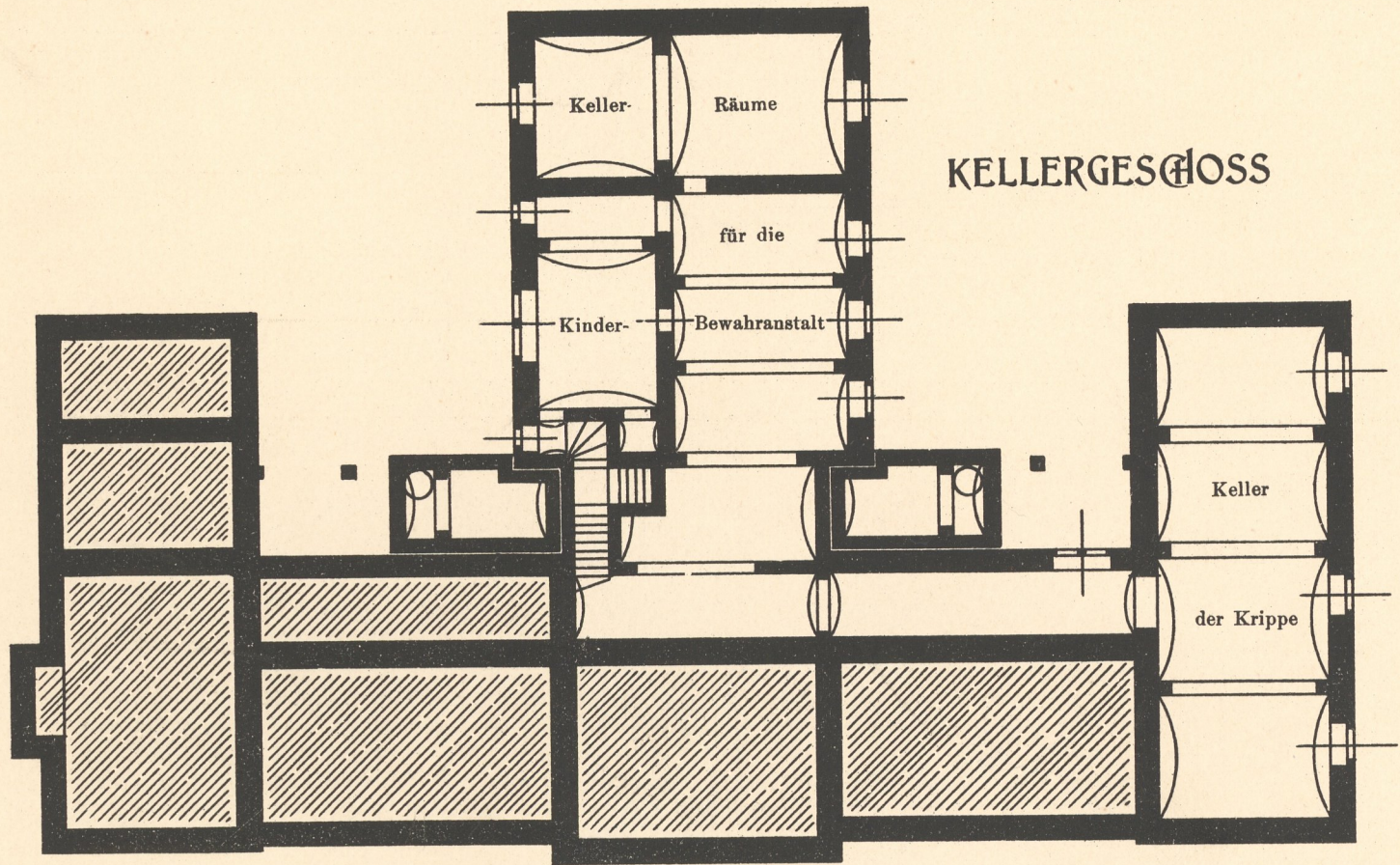
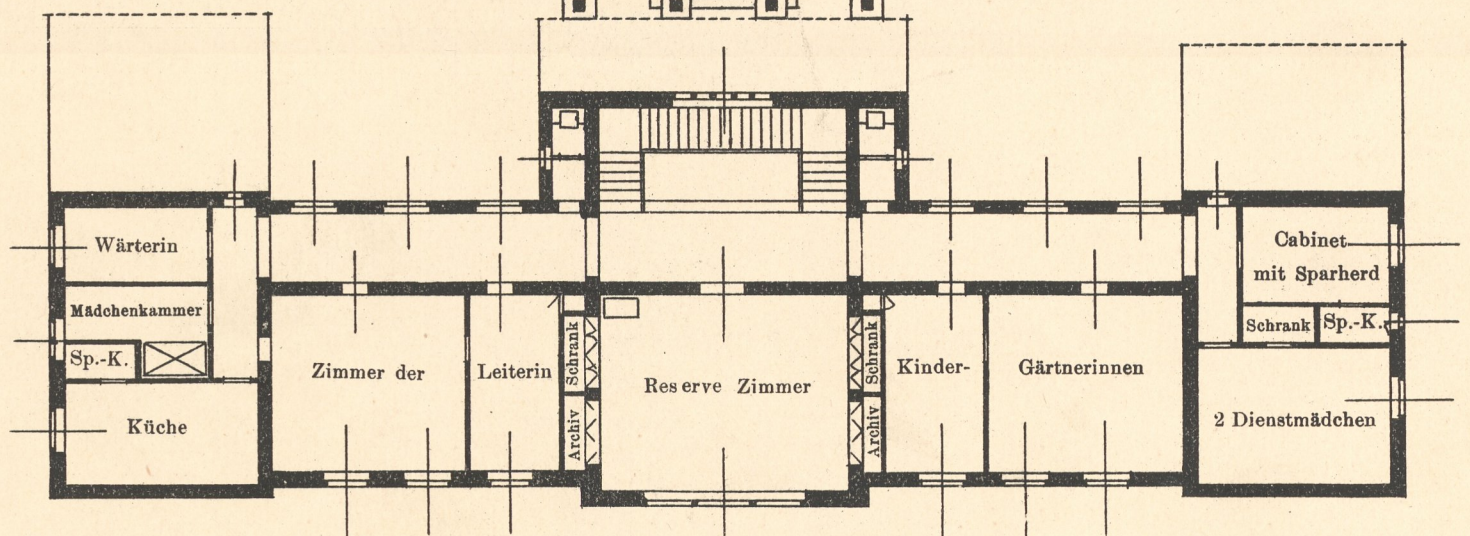
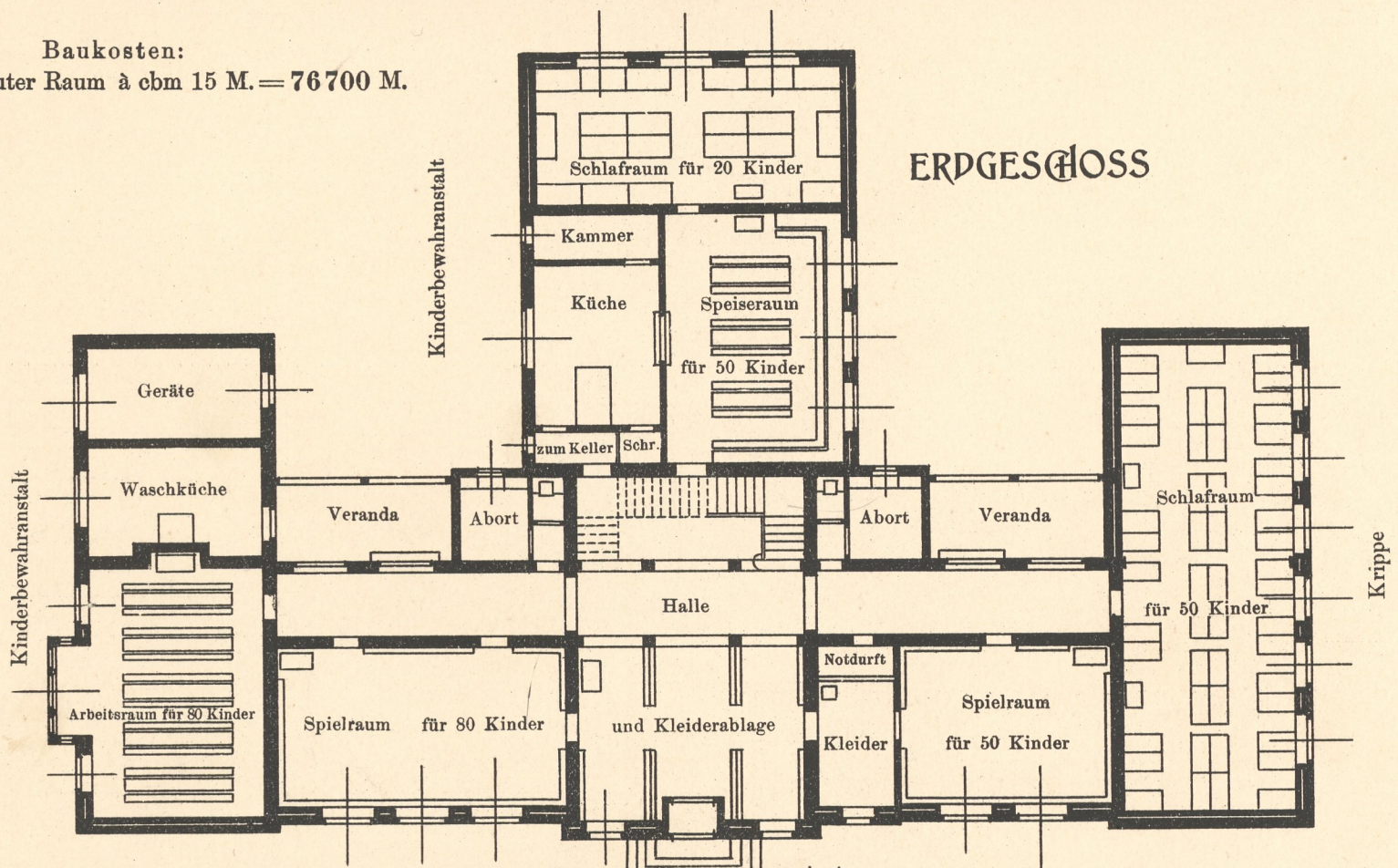


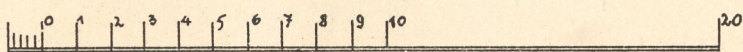
ENTWURF ZU EINER KINDER-BEWAHR-ANSTALT

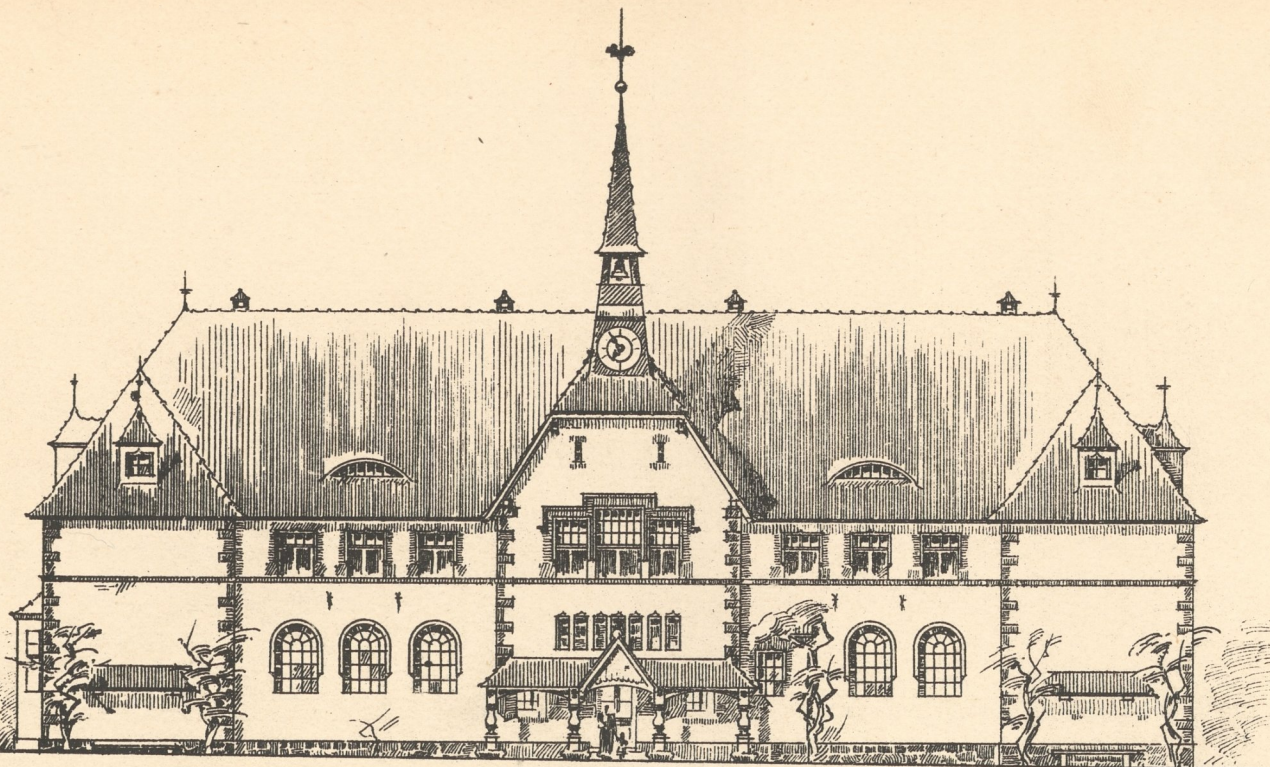


Baukosten:
 5120 cbm umbauter Raum à cbm 15 M. = 76700 M.

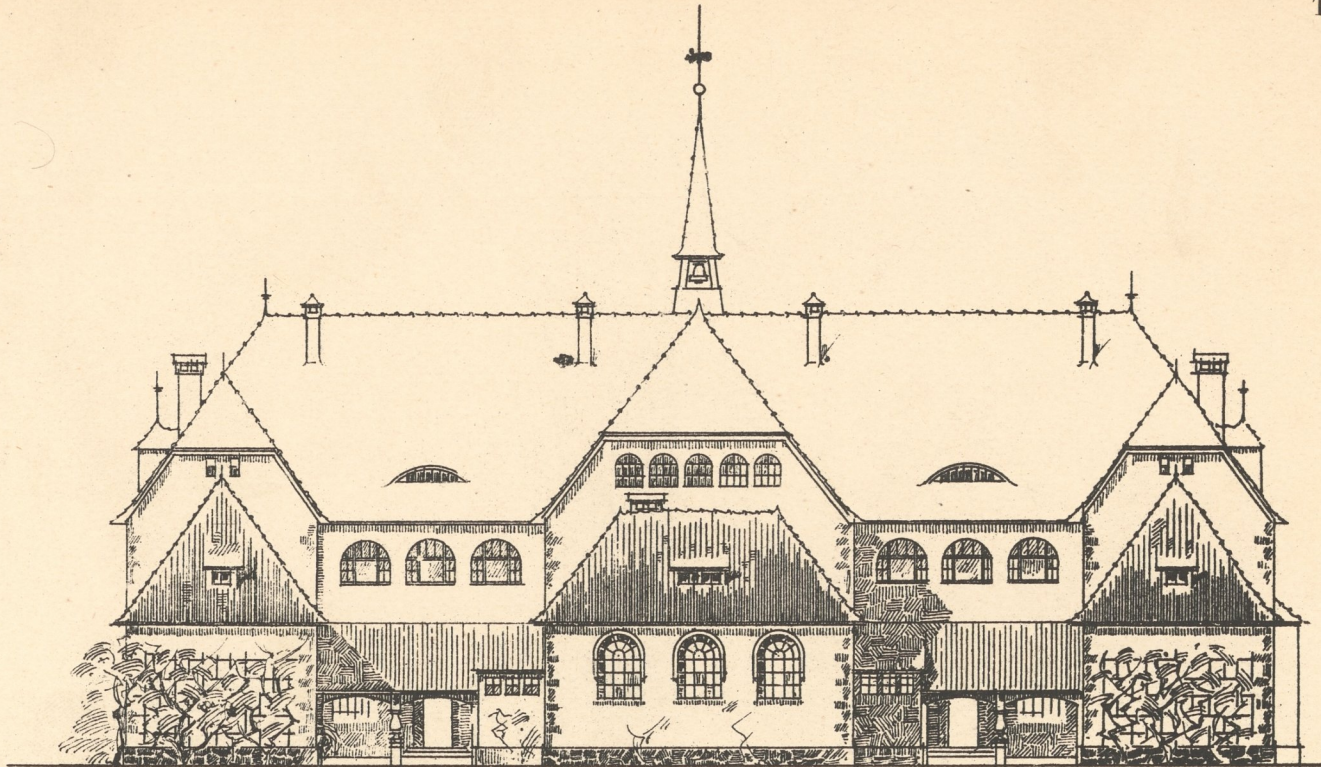


OBERGESCHOSS



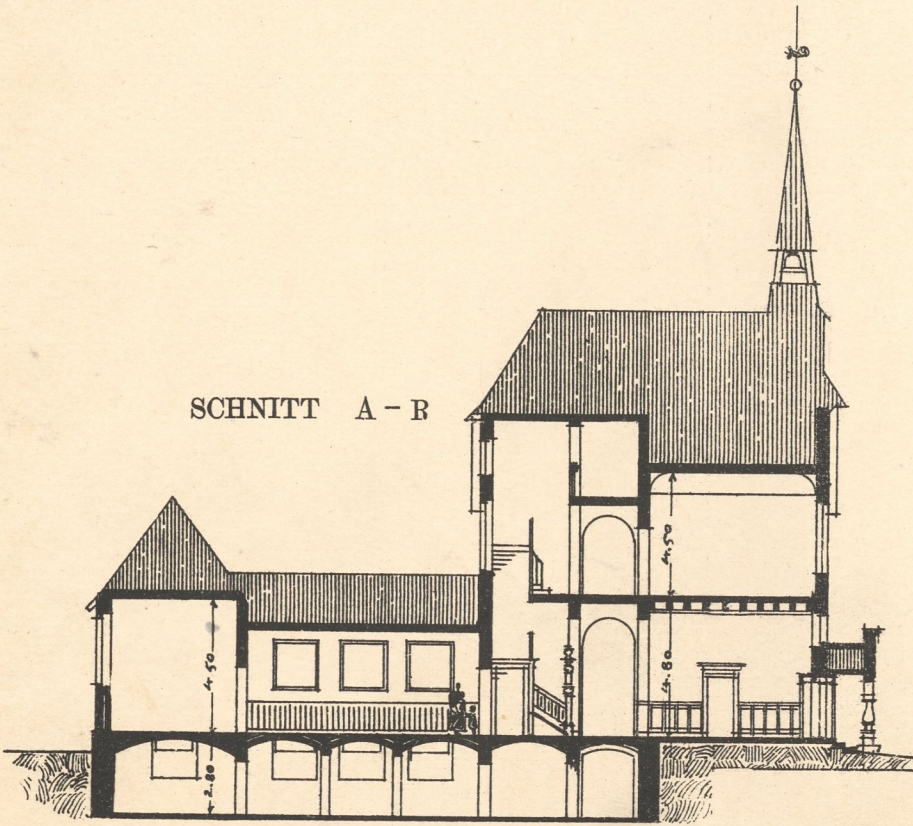
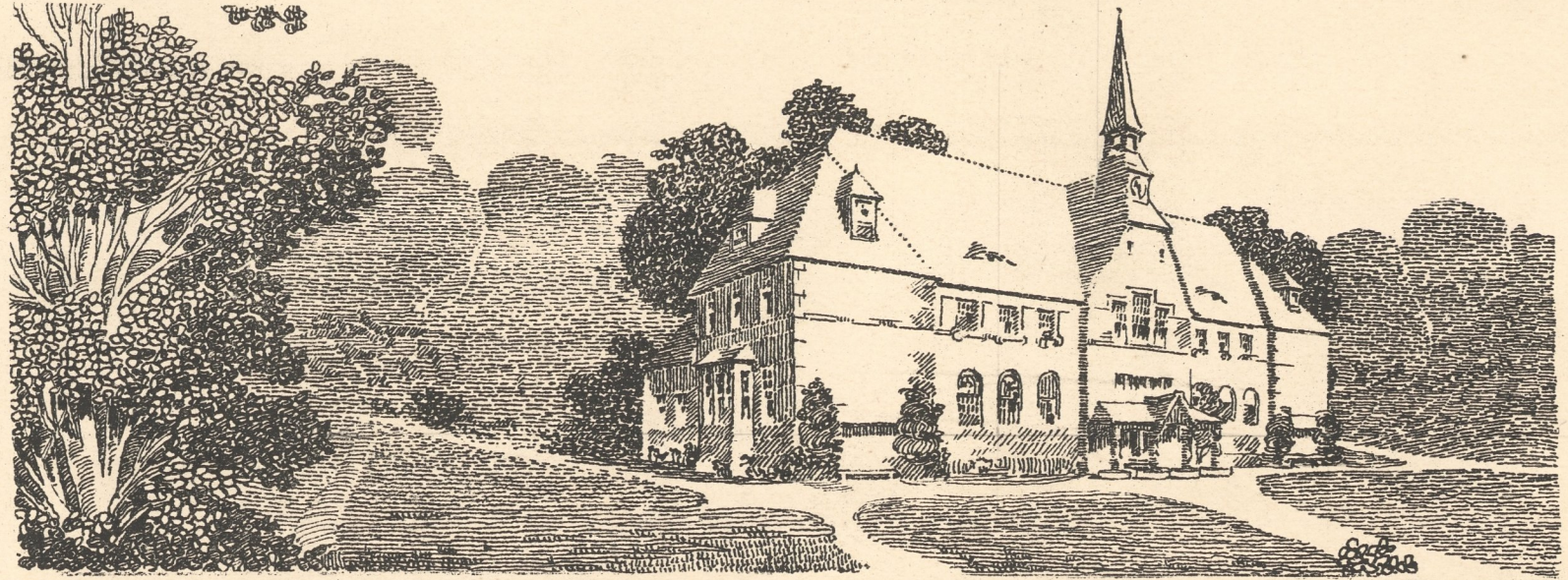


ANSICHT NACH DER STRASSE

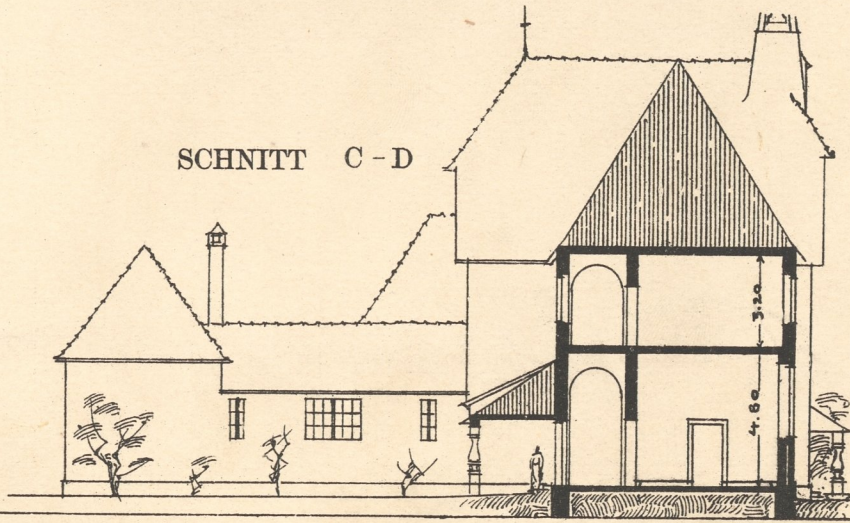


ANSICHT NACH DEM HOFE

ENTWURF ZU EINER KINDER-BEWAHR-ANSTALT



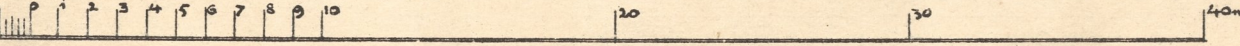
SCHNITT A - B



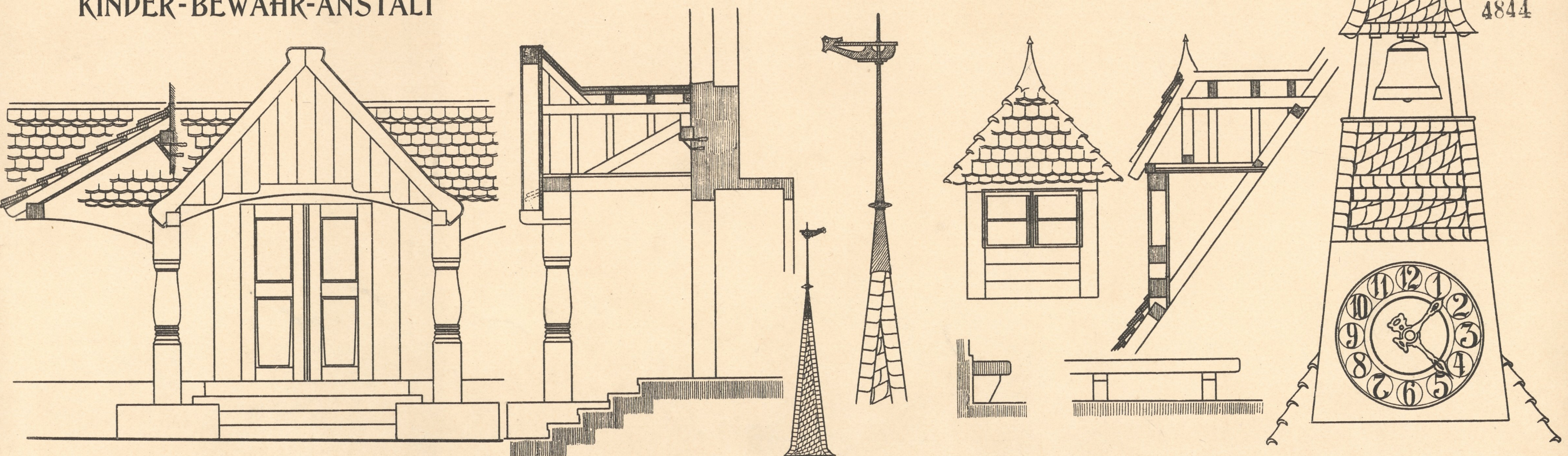
SCHNITT C - D



SEITENANSICHT



ENTWURF ZU EINER KINDER-BEWAHR-ANSTALT



STRASSENANSICHT

