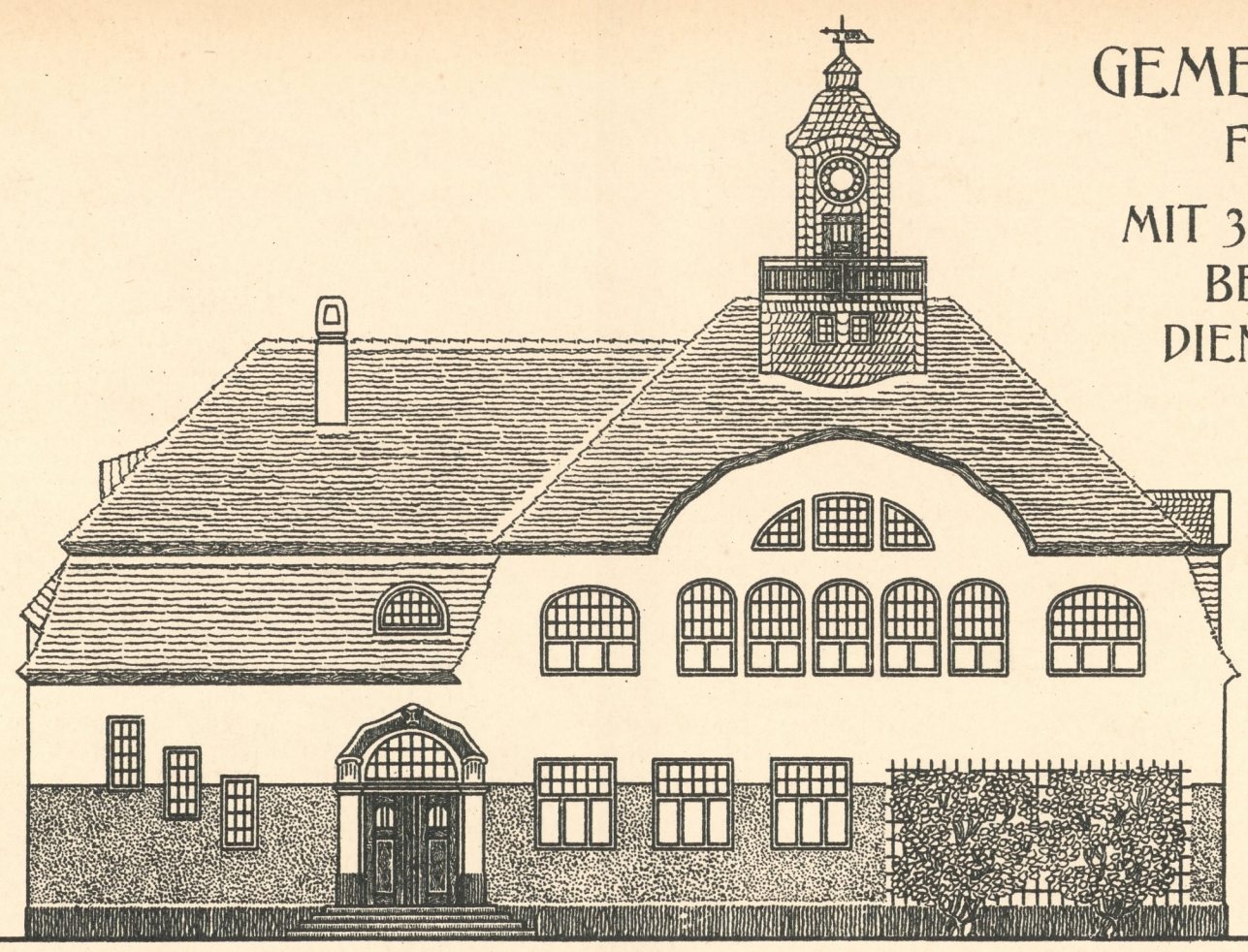


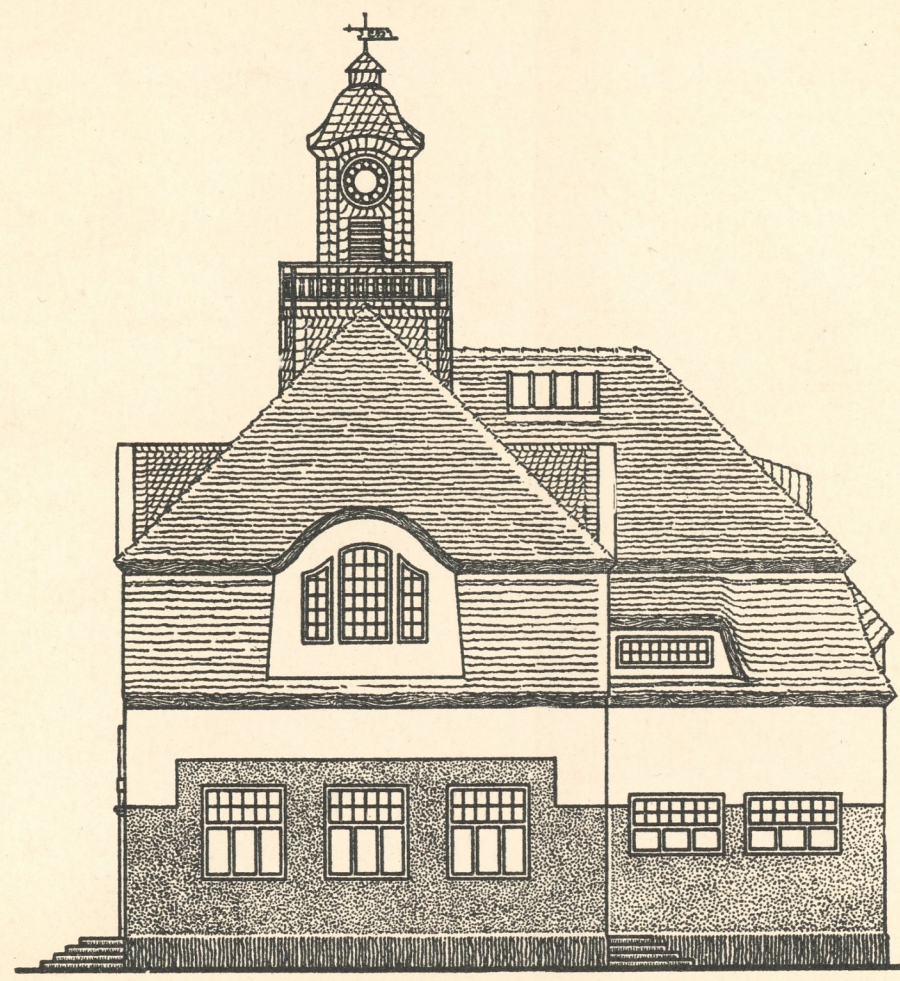
GEMEINDE-SCHULE
FÜR RIPPEN
MIT 3 LEHRZIMMERN,
BETSAAL UND
DIENSTWOHNUNG



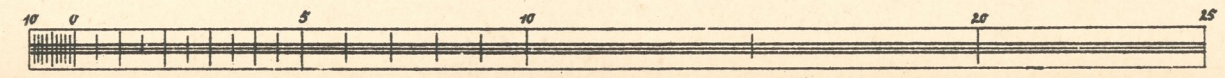
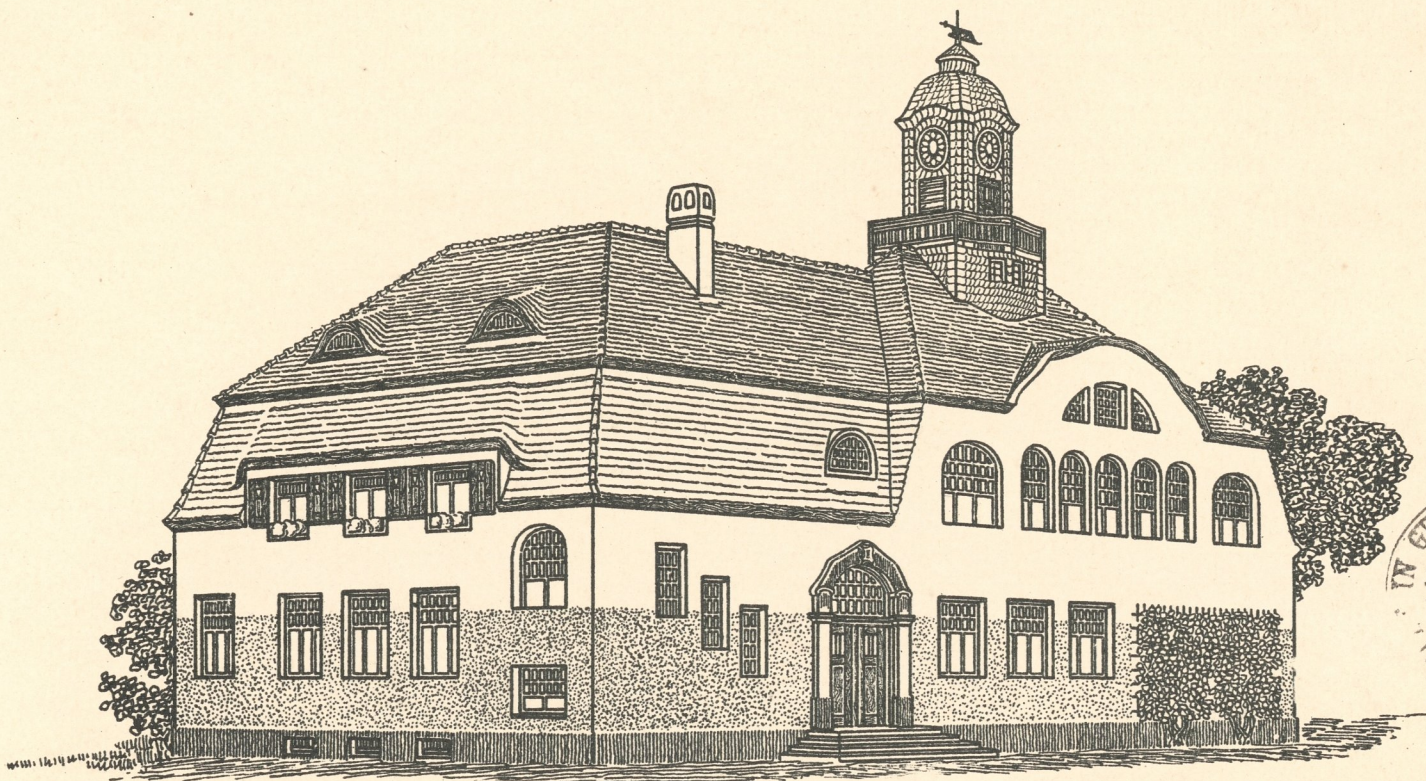
VORDERANSICHT

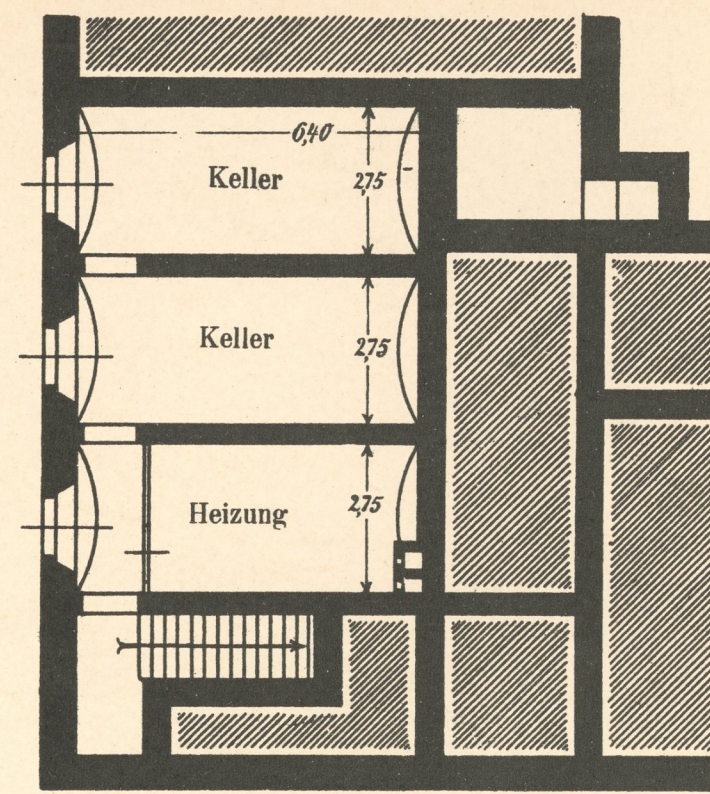
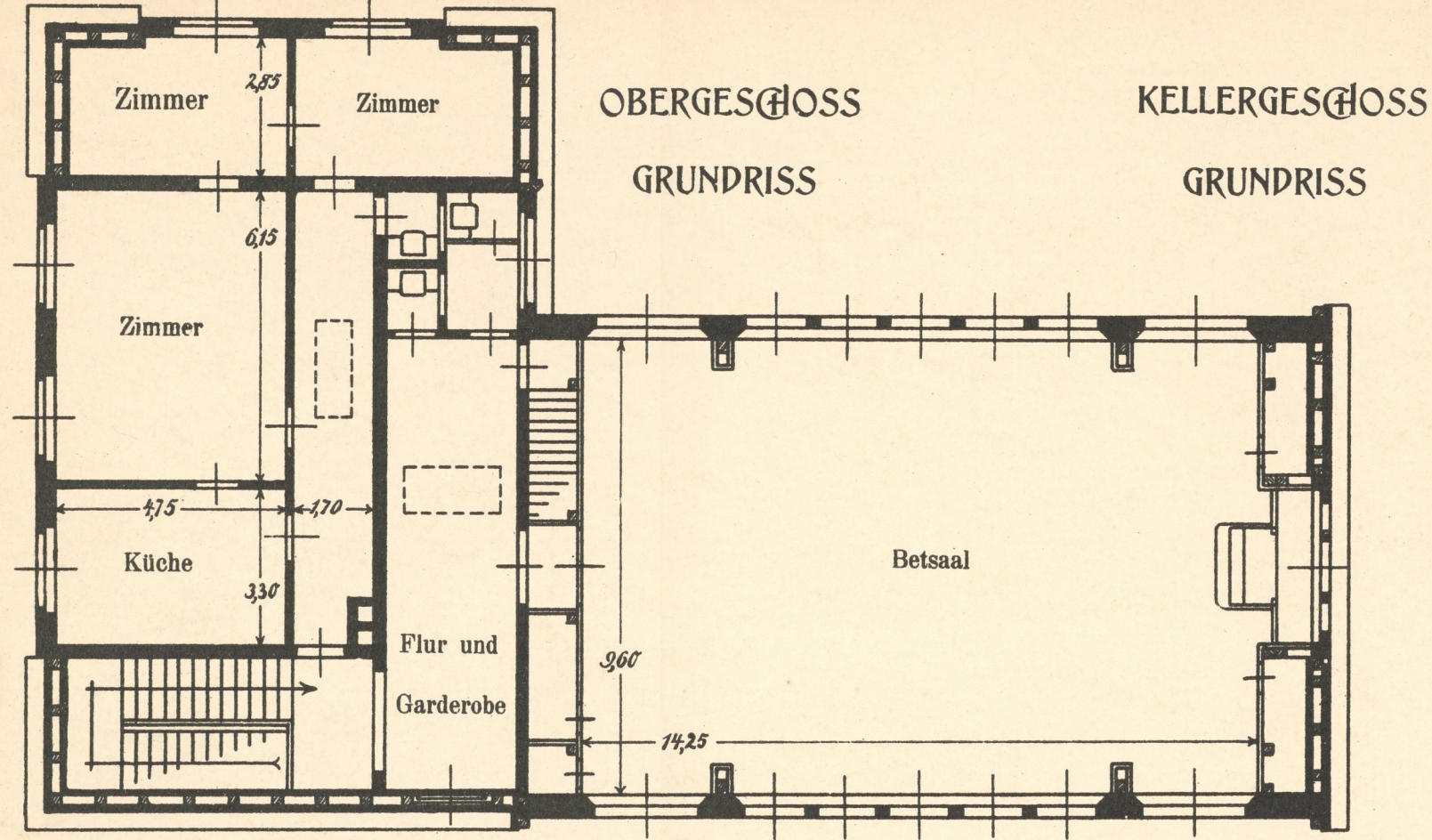


RÜCKANSICHT

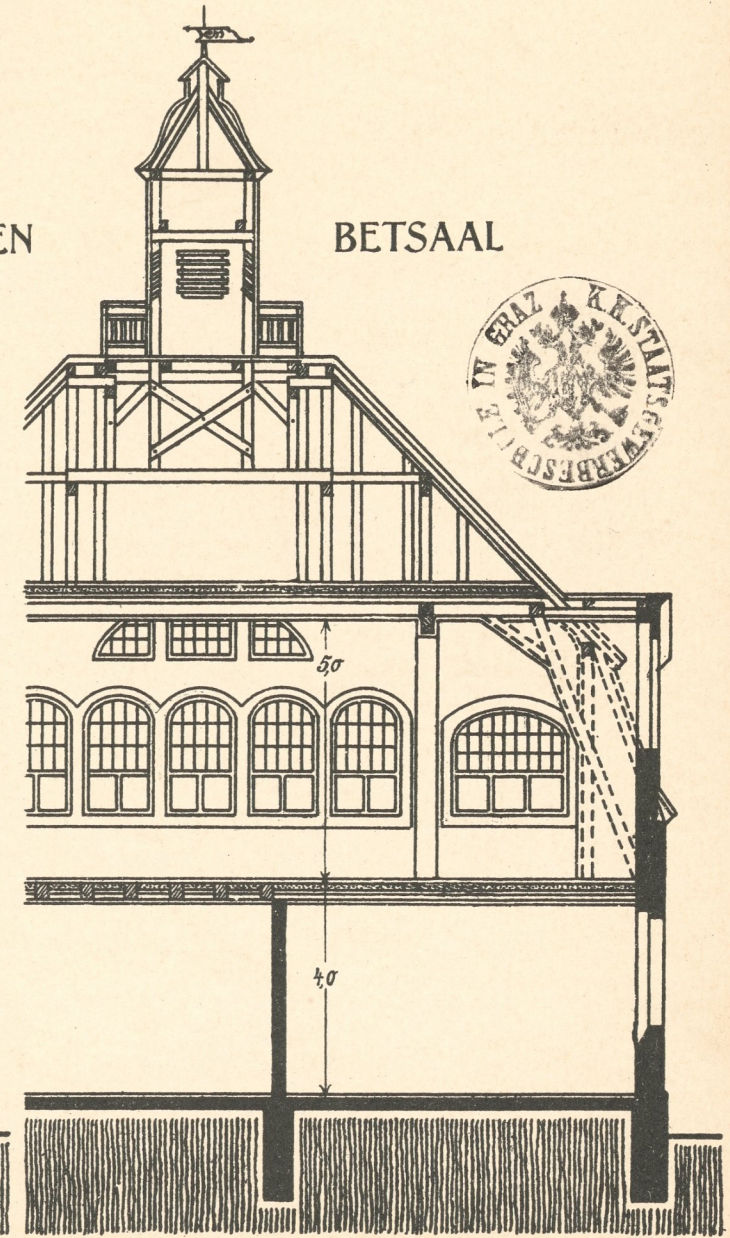
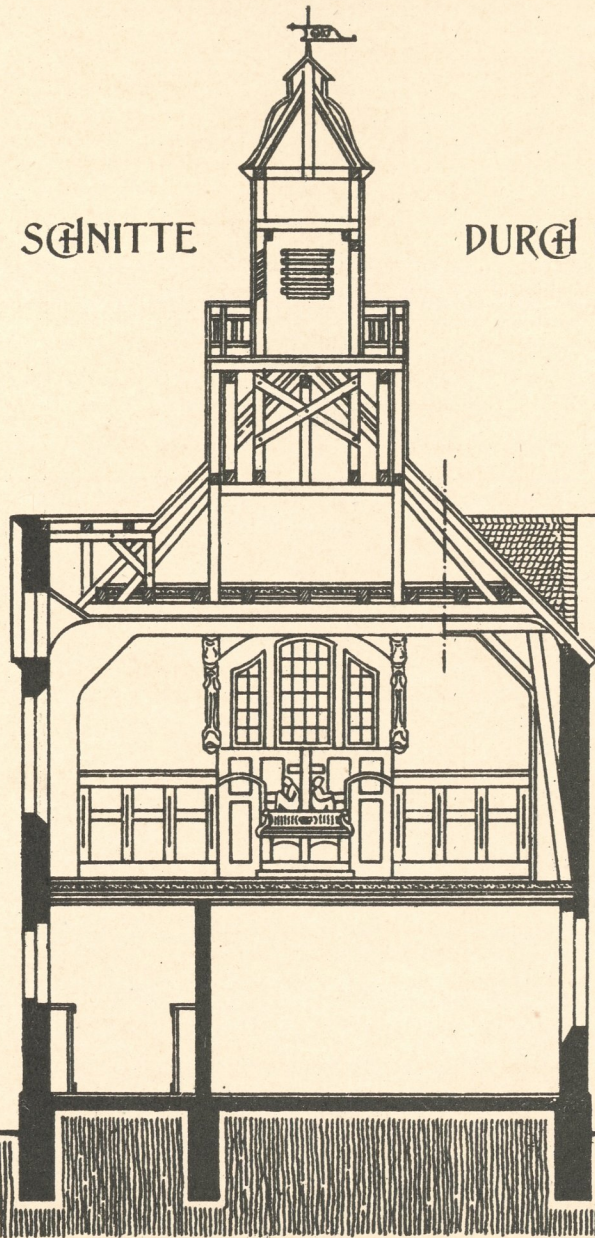
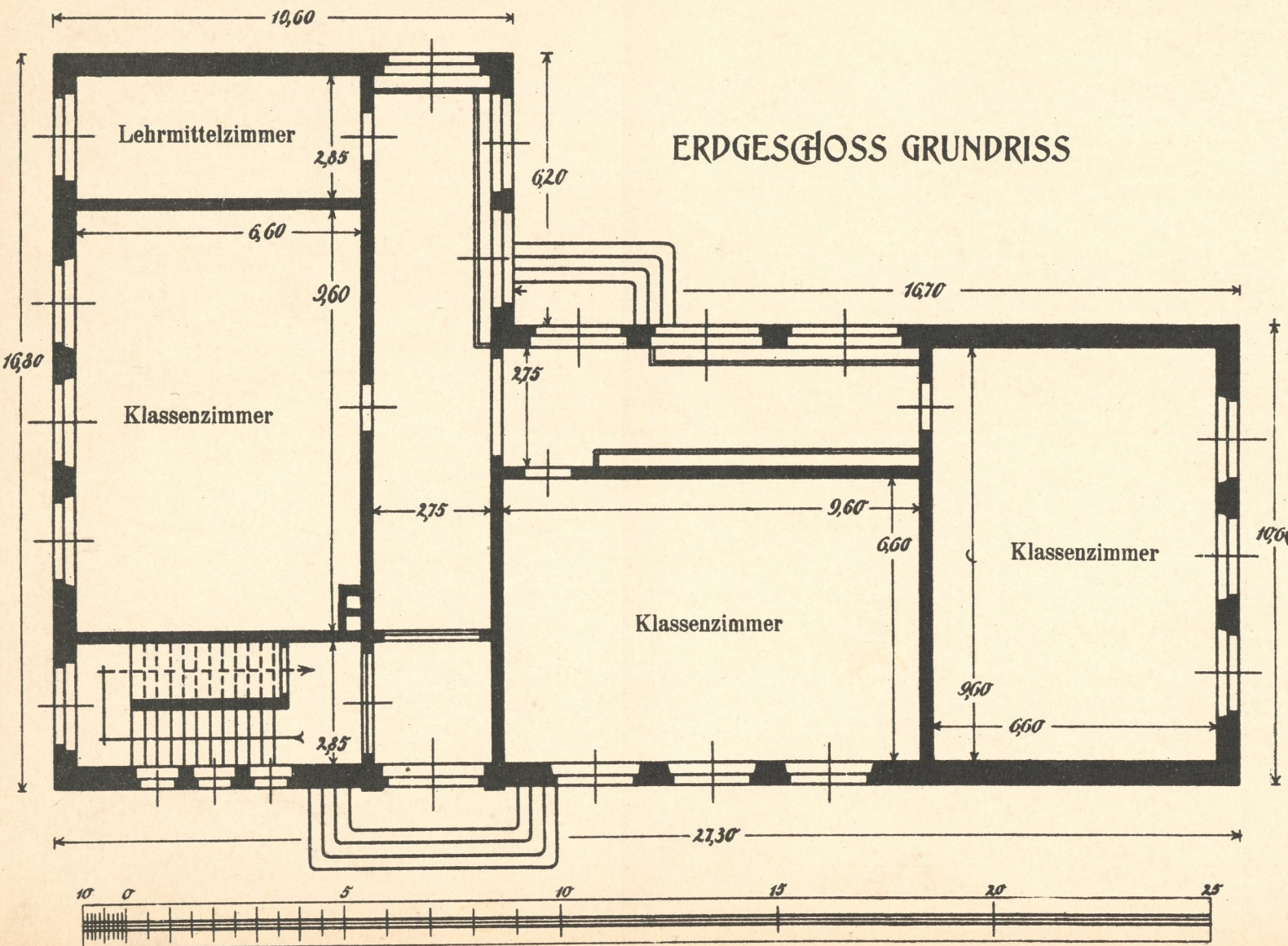


RECHTE SEITENANSICHT





**GEMEINDE-SCHULE
 FÜR RIPPEN
 MIT 3 LEHRZIMMERN,
 BETSAAL UND
 DIENSTWOHNUNG**



QUERSCHNITT

LÄNGSSCHNITT