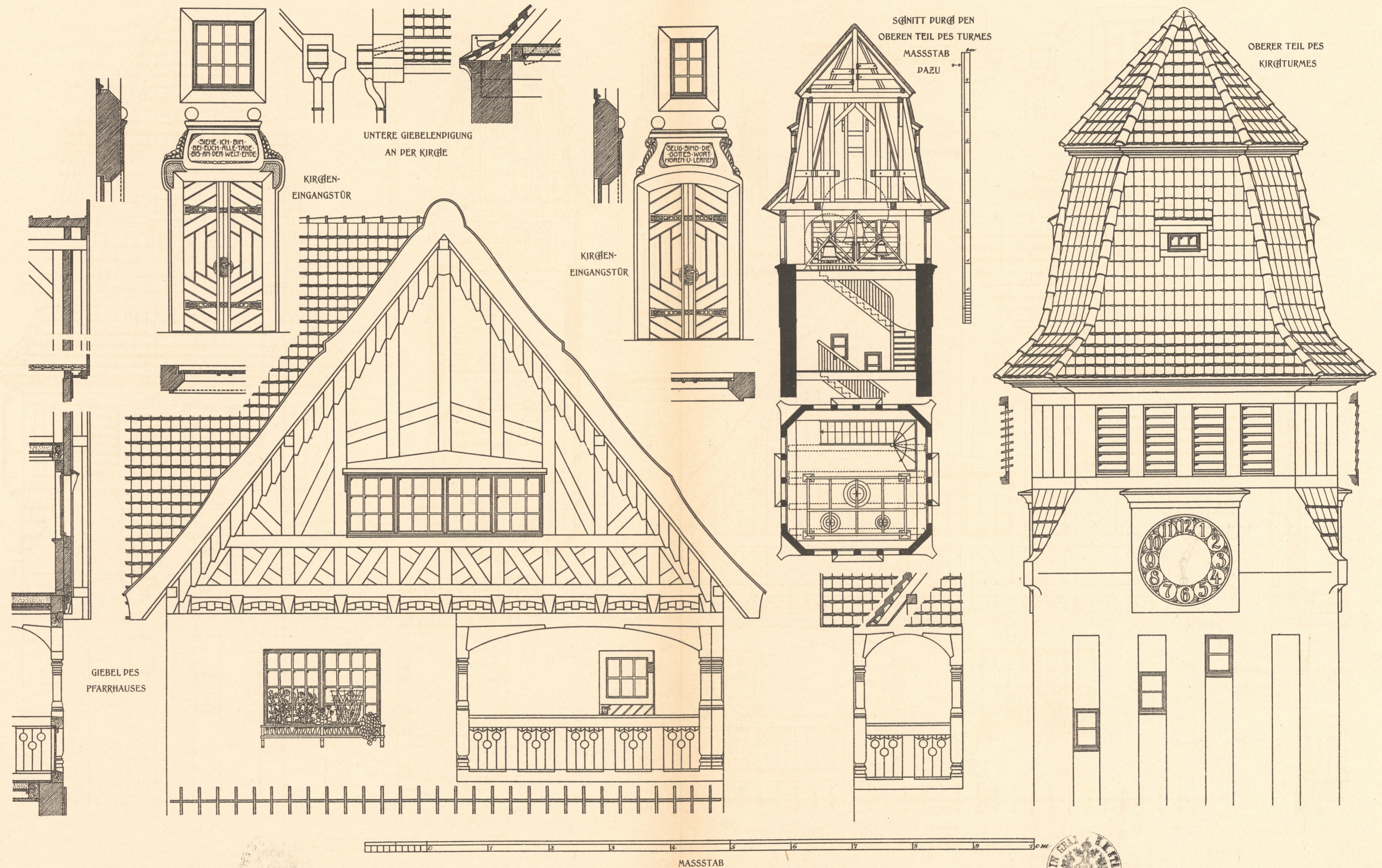
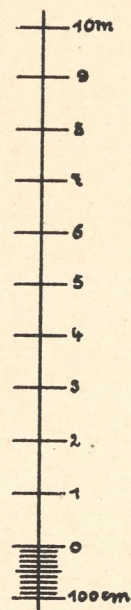
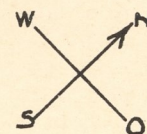
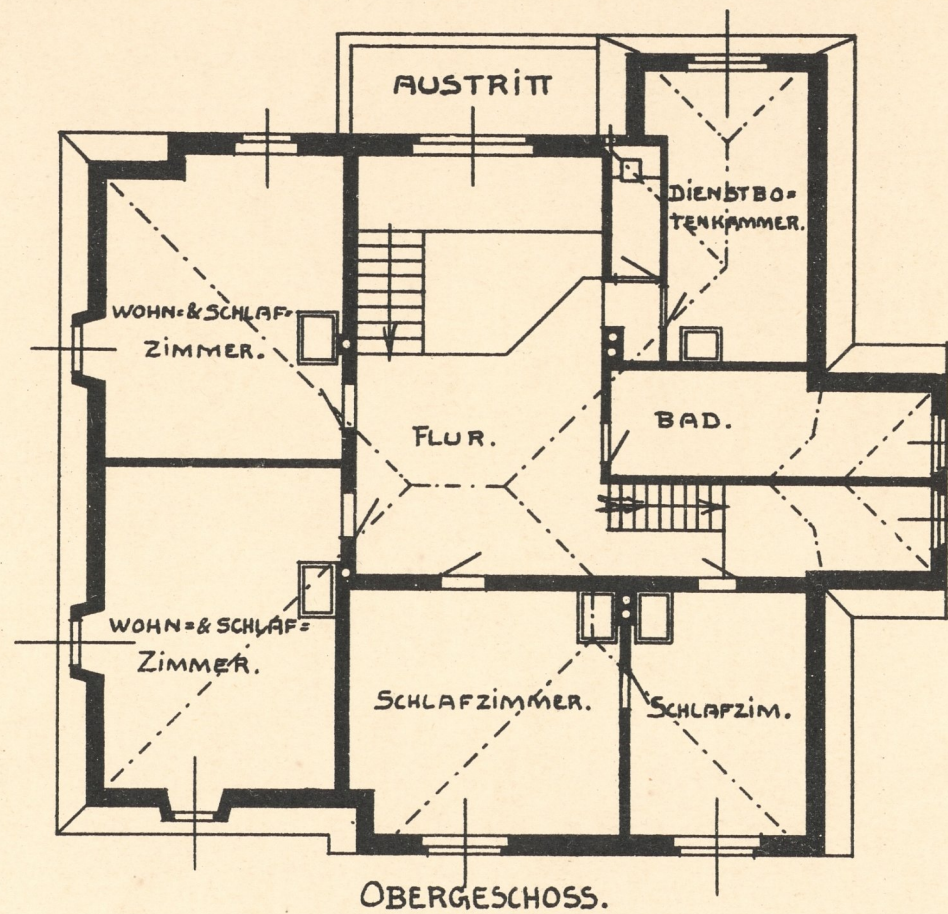
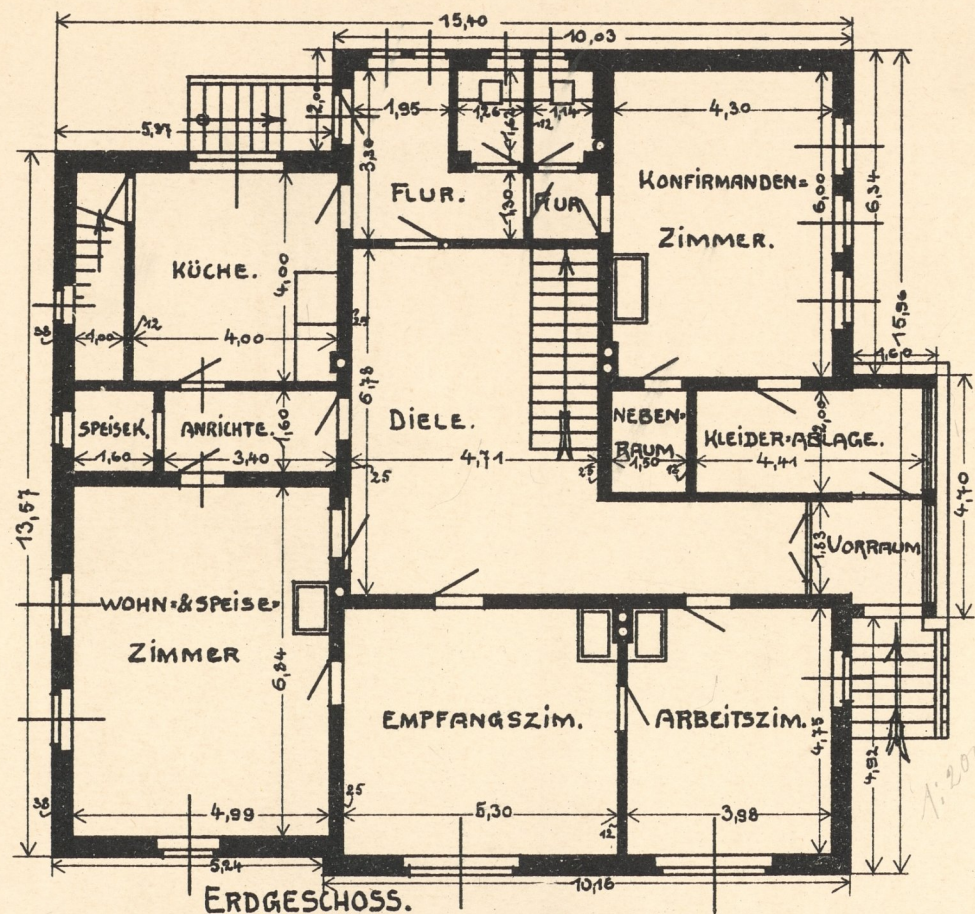


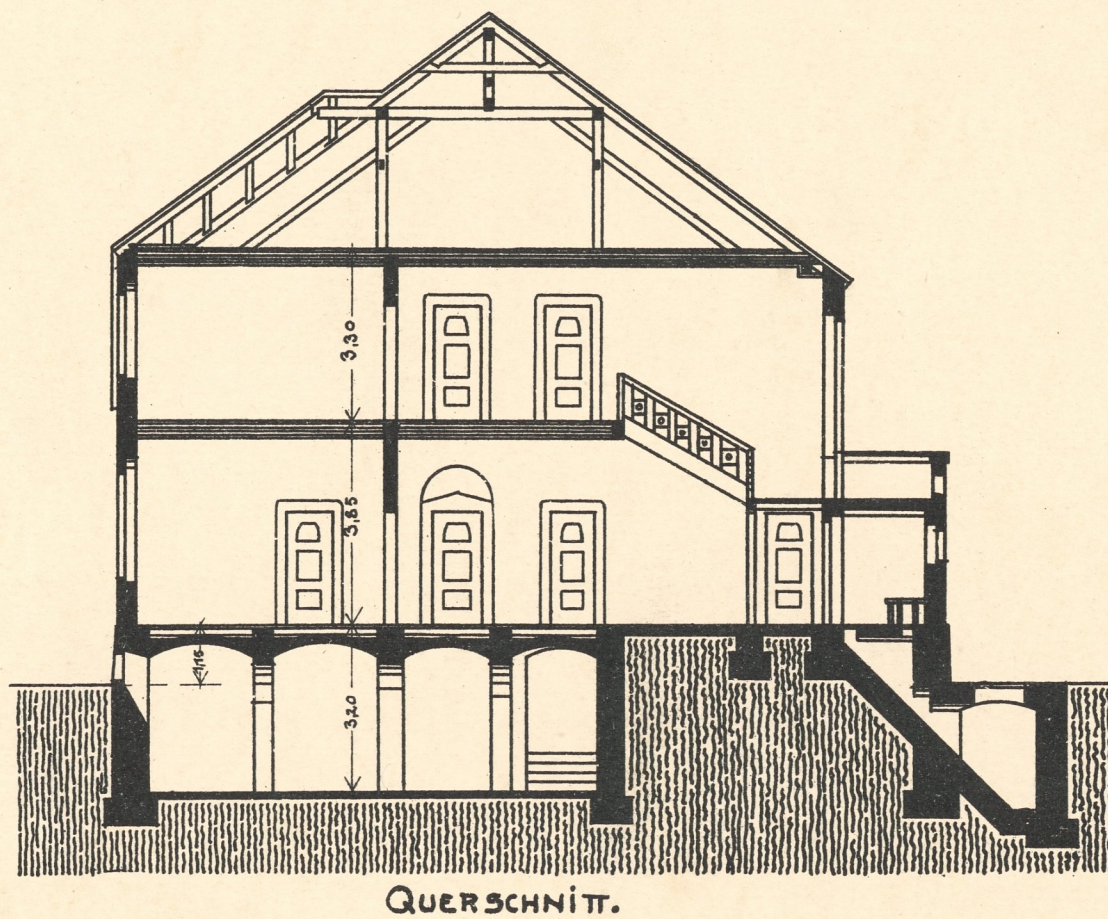
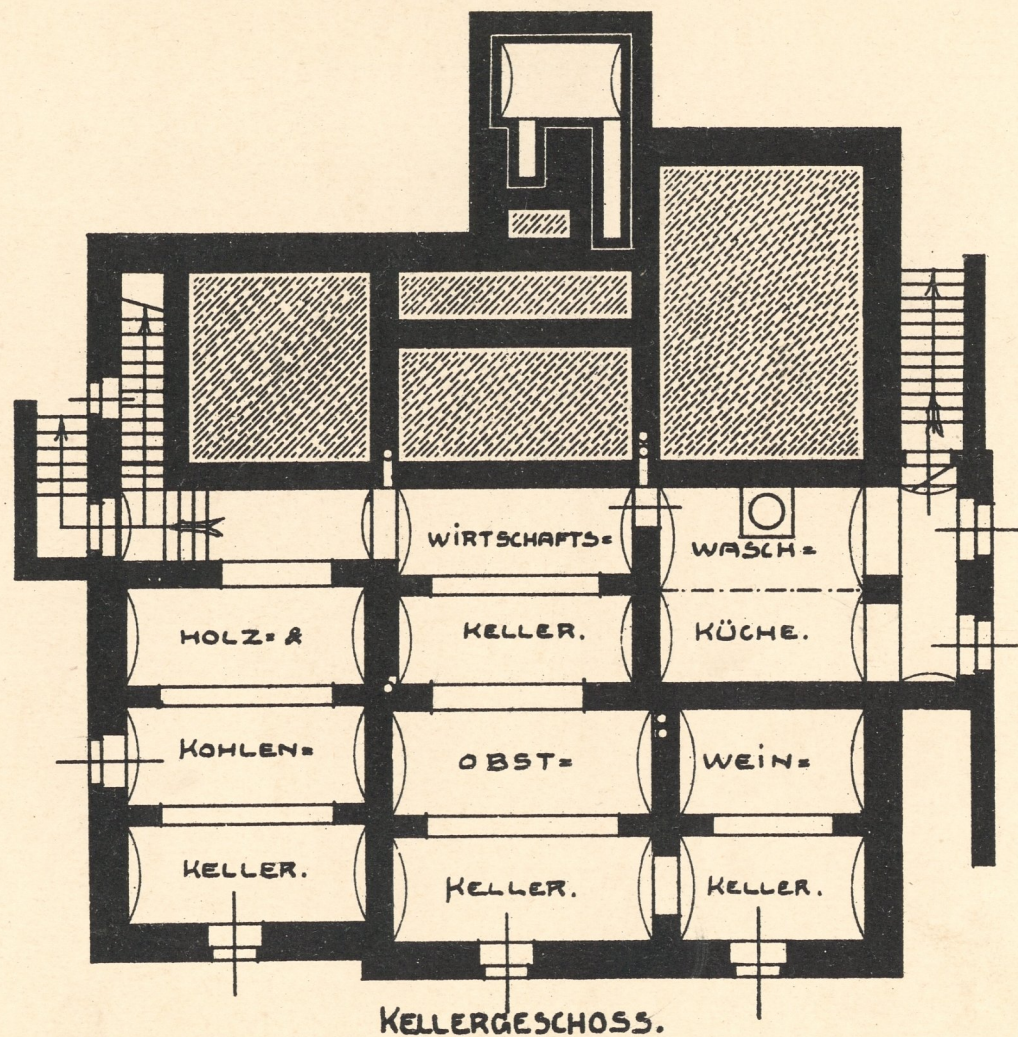
ENTWURF ZU EINER DORFKIRCHE MIT PFARRHAUS - DETAILS



PFARRHAUS MIT KONFIRMANDEN-ZIMMER



Berechnung der Baukosten:
2070 cbm umbauten Raum à cbm Mk. 15,50 = Mk. 32085



PFARRHAUS MIT KONFIRMANDEN-ZIMMER

Tafel 9.

