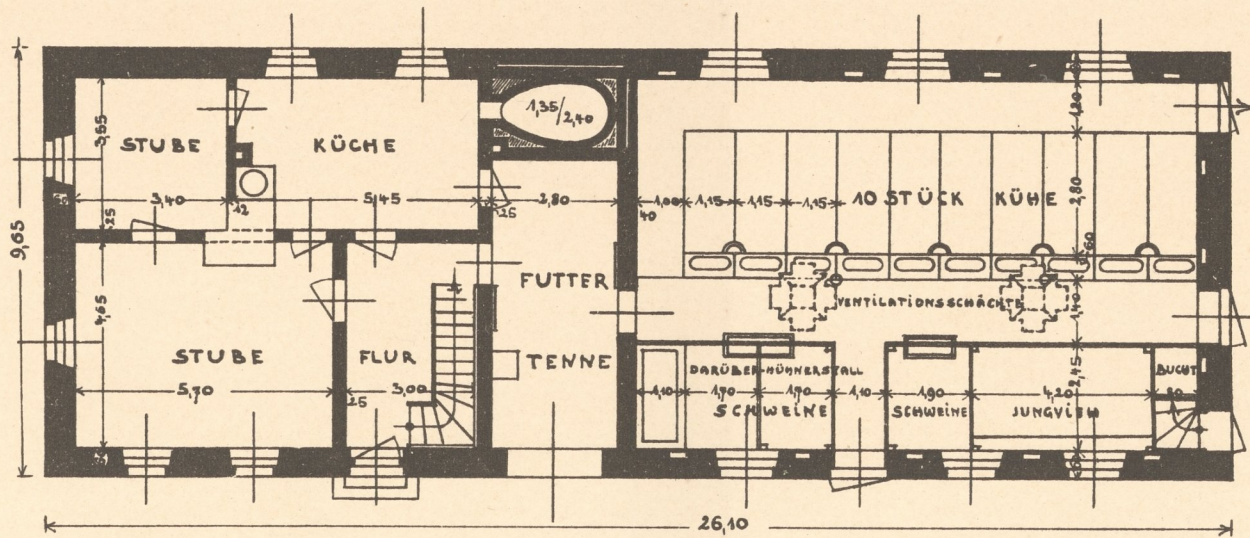
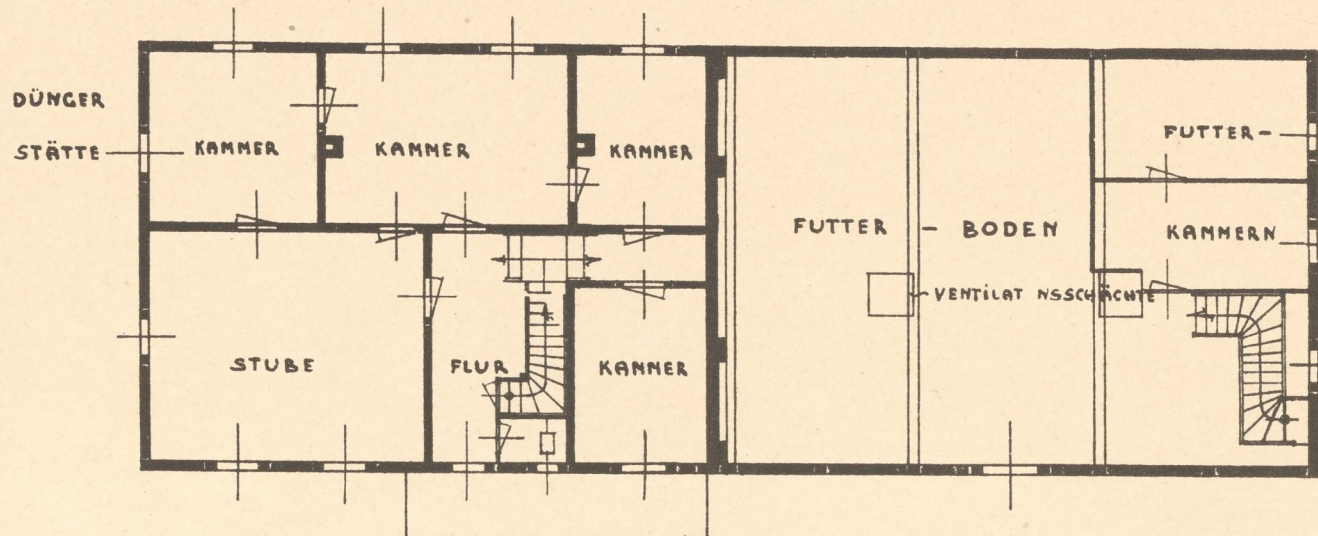


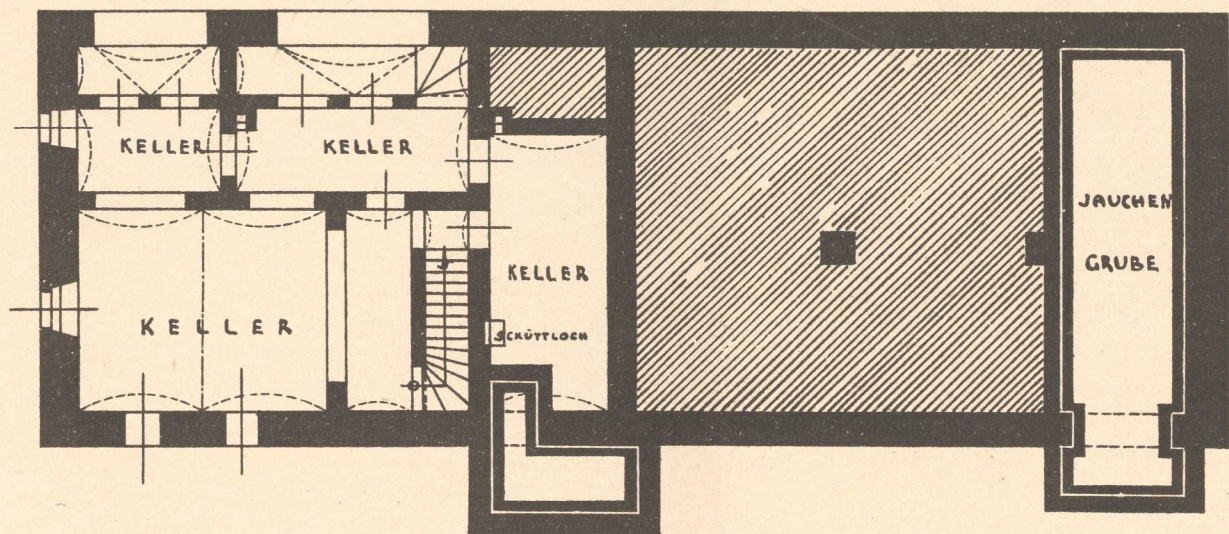
WOHN- UND STALLGEBÄUDE  
 FÜR HERRN GUTSBESITZER LANDROCK IN ZSCHOCKEN BEI ZWICKAU.  
 PARZ. N° 40.



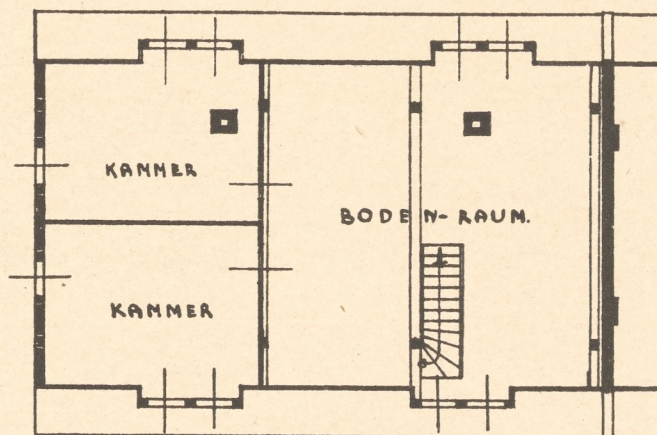
ERDGESCHOSS.



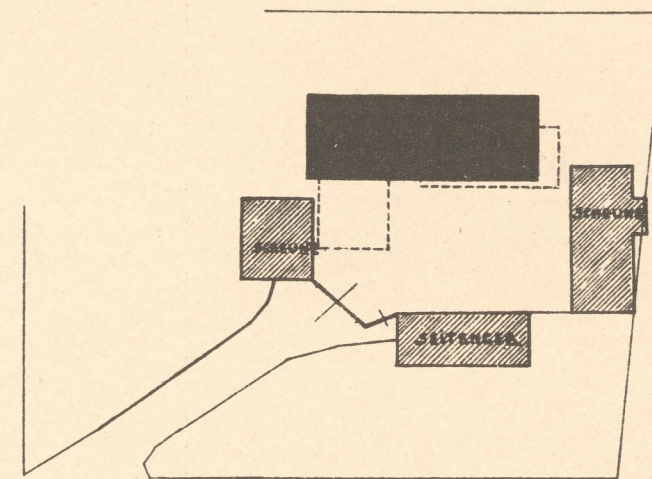
OBERGESCHOSS



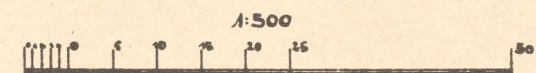
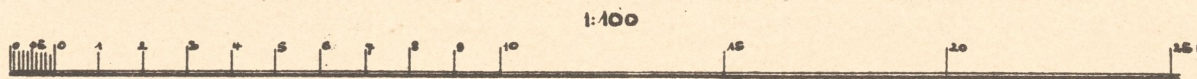
KELLERGESCHOSS



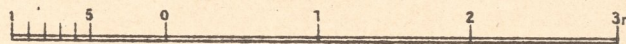
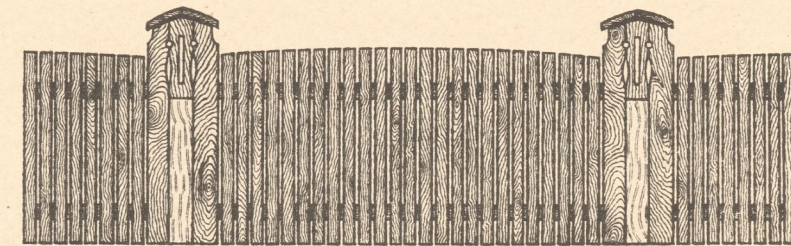
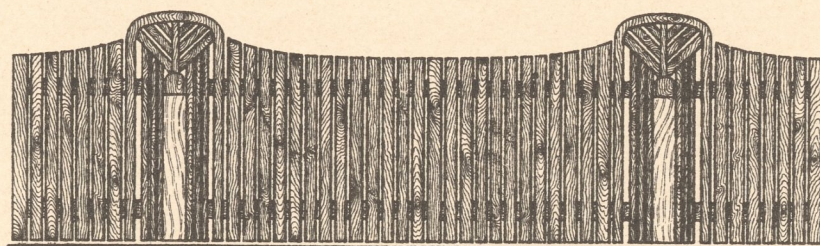
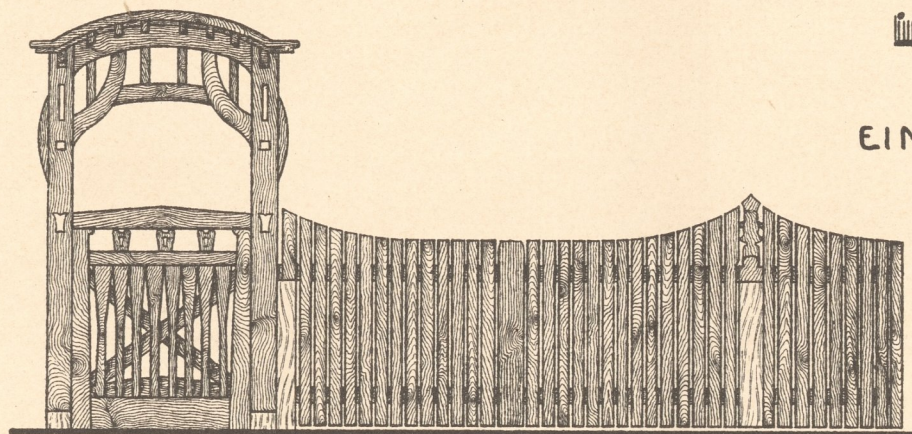
DACHGESCHOSS



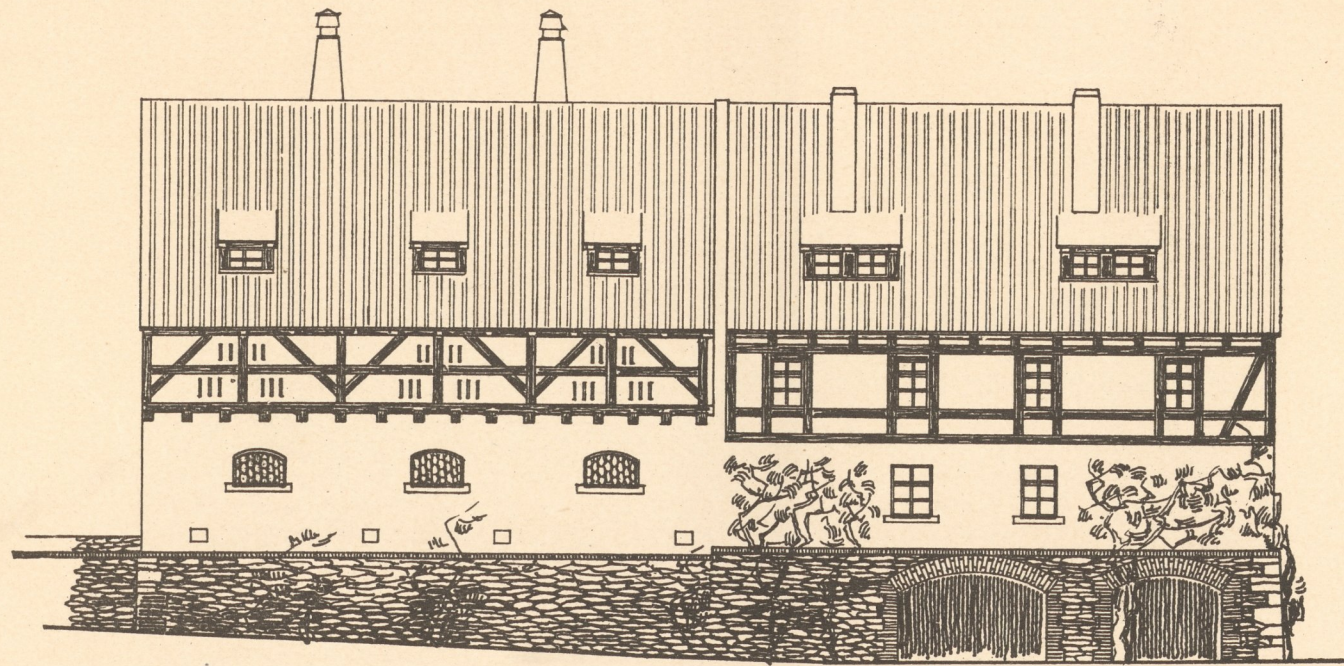
STRASSE NACH WILDENFELS  
LAGEPLAN.



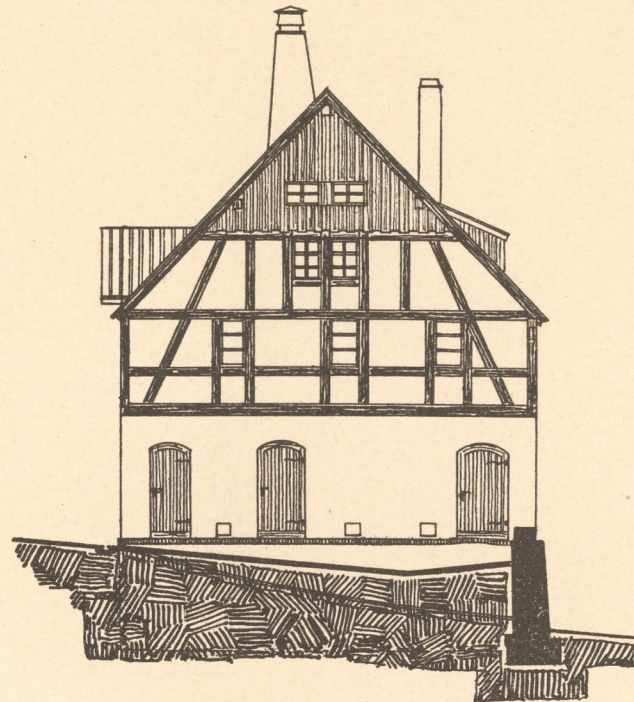
EINFRIEDIGUNGEN AUS HOLZ MIT STEINSÄULEN.



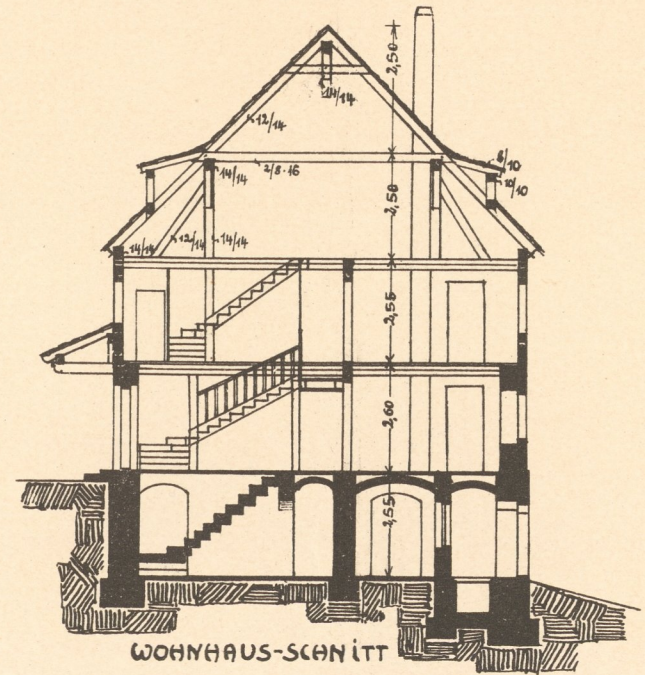
WOHN- UND STALLGEBÄUDE  
 FÜR HERRN GUTSBESITZER LANDROCK IN ZSCHOCKEN BEI ZWICKAU.  
 PARZ. N<sup>o</sup> 40.



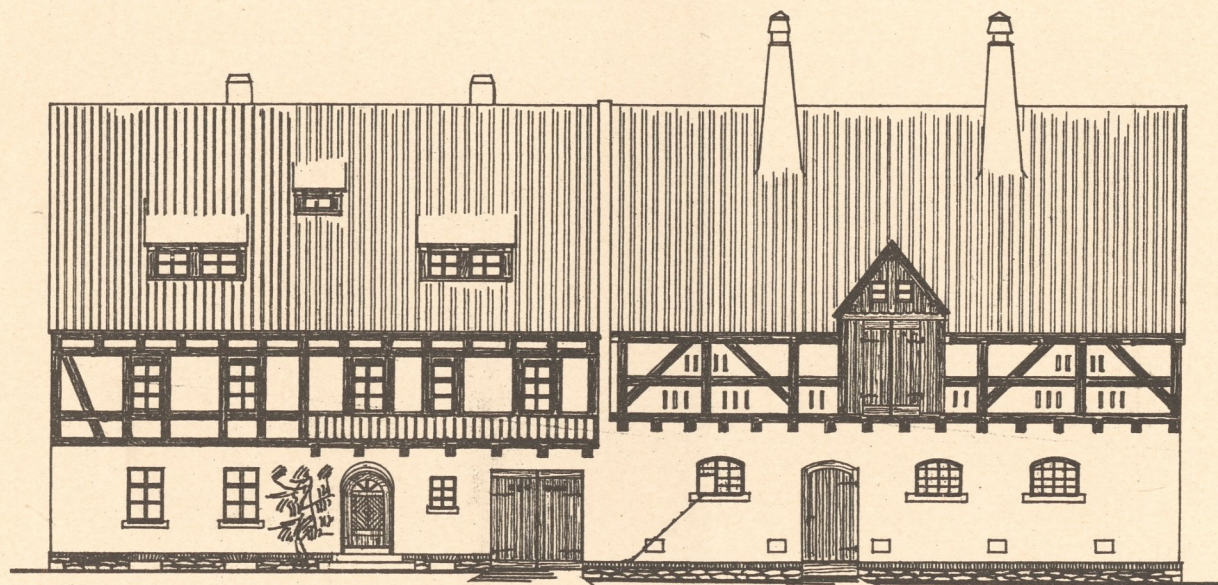
ANSICHT GEGEN SÜDEN.



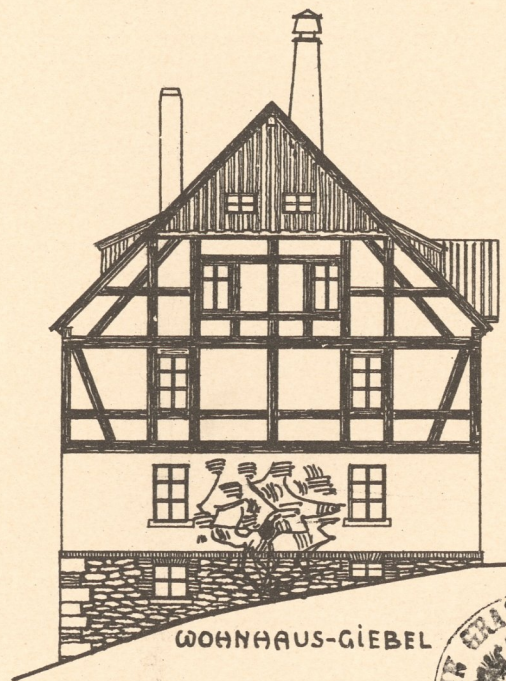
STALL-GIEBEL



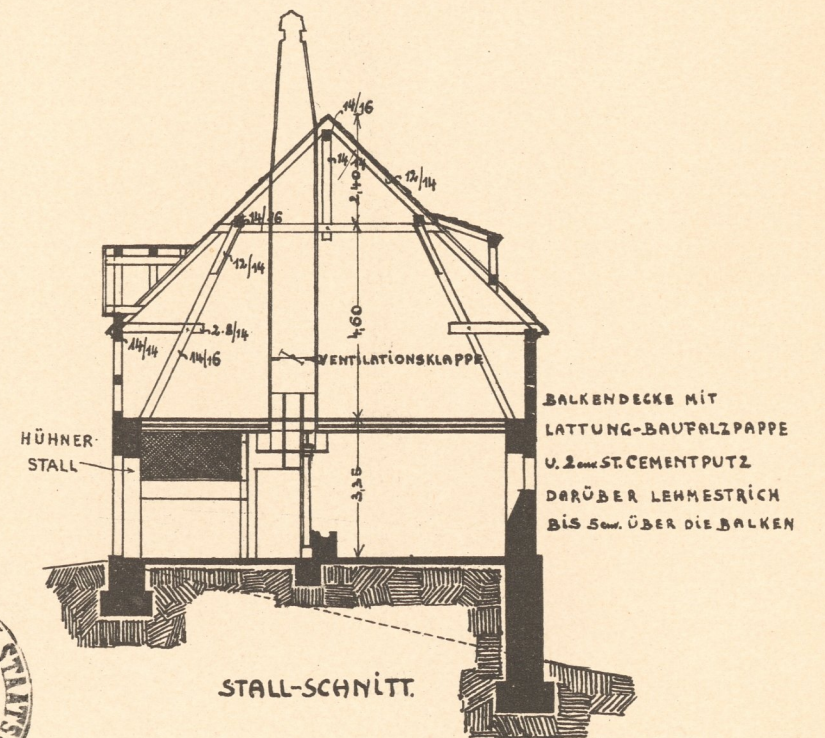
WOHNHAUS-SCHNITT



ANSICHT GEGEN NORDEN



WOHNHAUS-GIEBEL



STALL-SCHNITT.

