

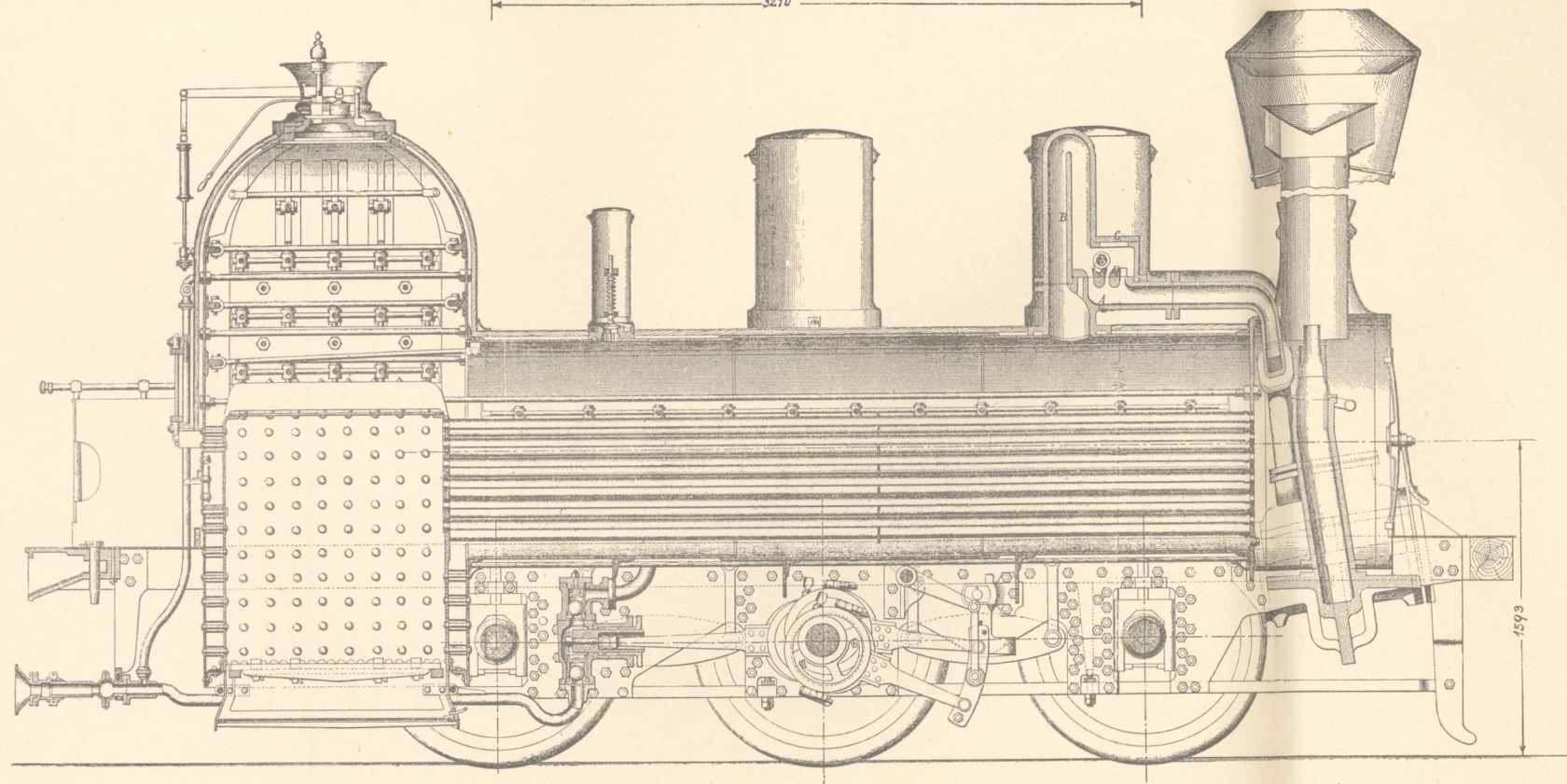
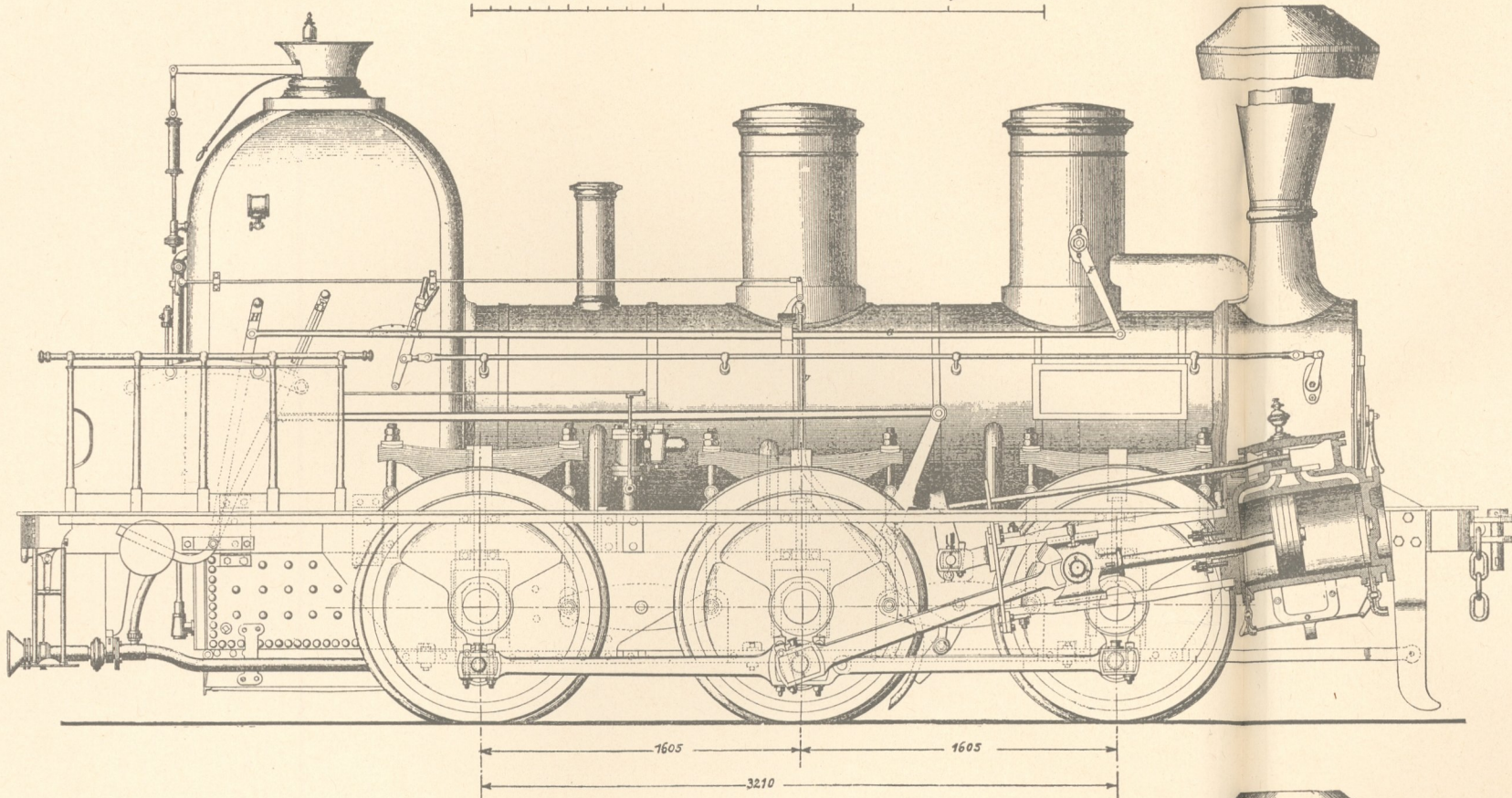
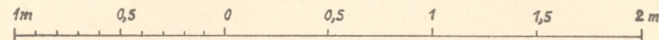
C, Württemb. Staatsbahn.

Erb. Maschfabr. Eßlingen 1849.

Schräge Zylinder, Steuerung mit Umkehrhebel.

Dienstg. 33,5 t; Reibungsg. 33,5 t;
Heizfl. 85,9 m²; Rostfl. 1,01 m²; p=7 atü;
d=447 mm; h=612 mm; D=1230 mm;
Radst. 3210 mm; Leist. 240 PS_i (21 km/h).

M.1:35.



Holländ. Eisenbahn „de Leeuw“.

Erb. Stephenson 1842.

Dienstg. 12,5 t; Reibungsg. 5 t;
Heizfl. 52,6 m²; Rostfl. 1,10 m²;
p=3,5 atü; d=355 mm; h=457 mm;
D=1830 mm; Radst. 3550 mm;
Leist. 110 PS_i (30 km/h).

