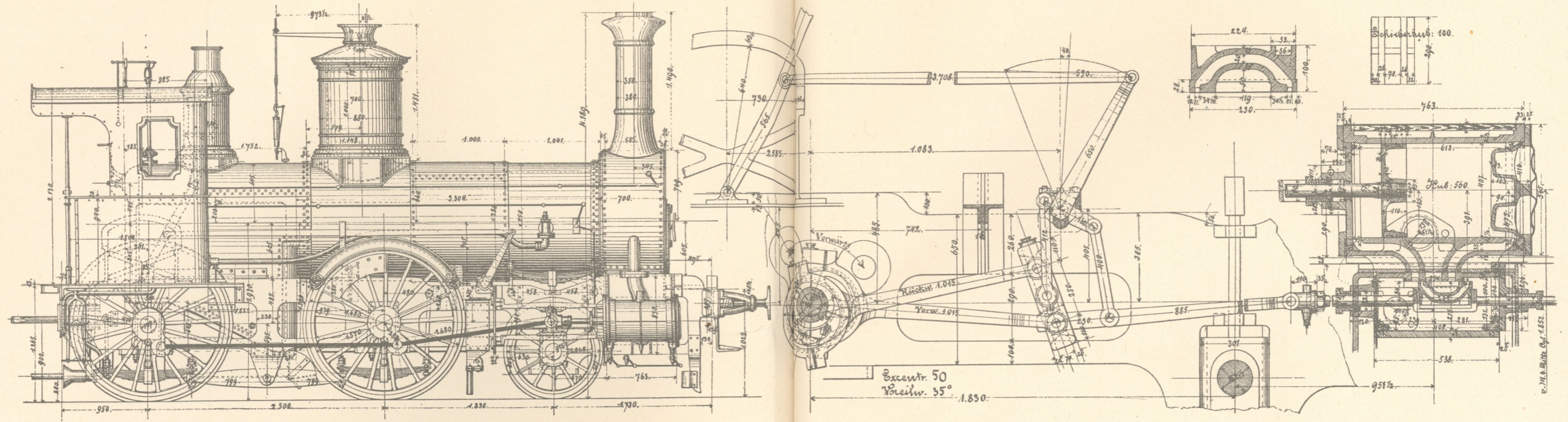


1 B, Mecklenb. Bahn.

Erb. Hartmann 1864.

Mit unterstützter Büchse ab 1872.

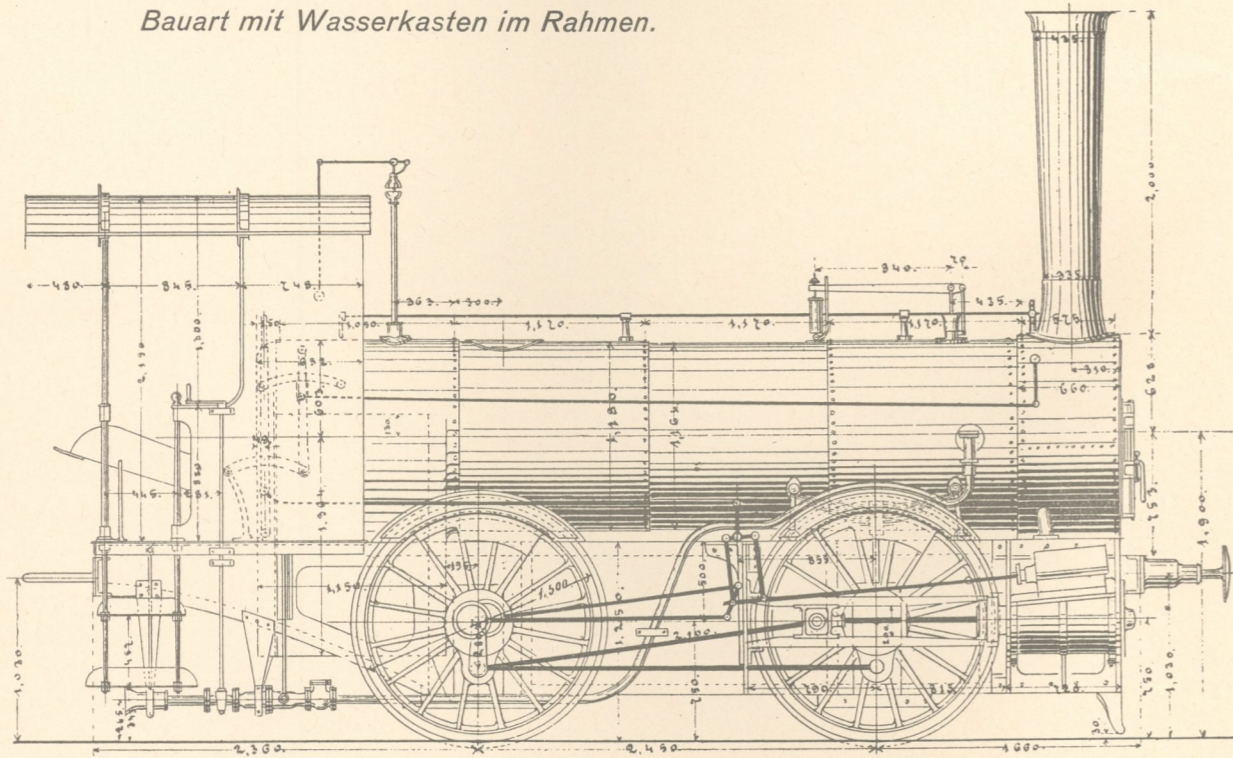


Dienstg. 32,9 t; Reibungsg. 22,1 t; Heizfl. 87,05 m<sup>2</sup>; Rostfl. 1,5 m<sup>2</sup>; p = 8,5 atü;  
d = 407 mm; h = 560 mm; D = 1680 mm; Radst. 4330 mm; Leist. 375 PS; (58 km/h).

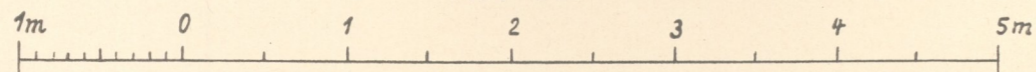
B „Landwürden“, Oldenburg. Staatsbahn.

Erb. Krauß 1867.

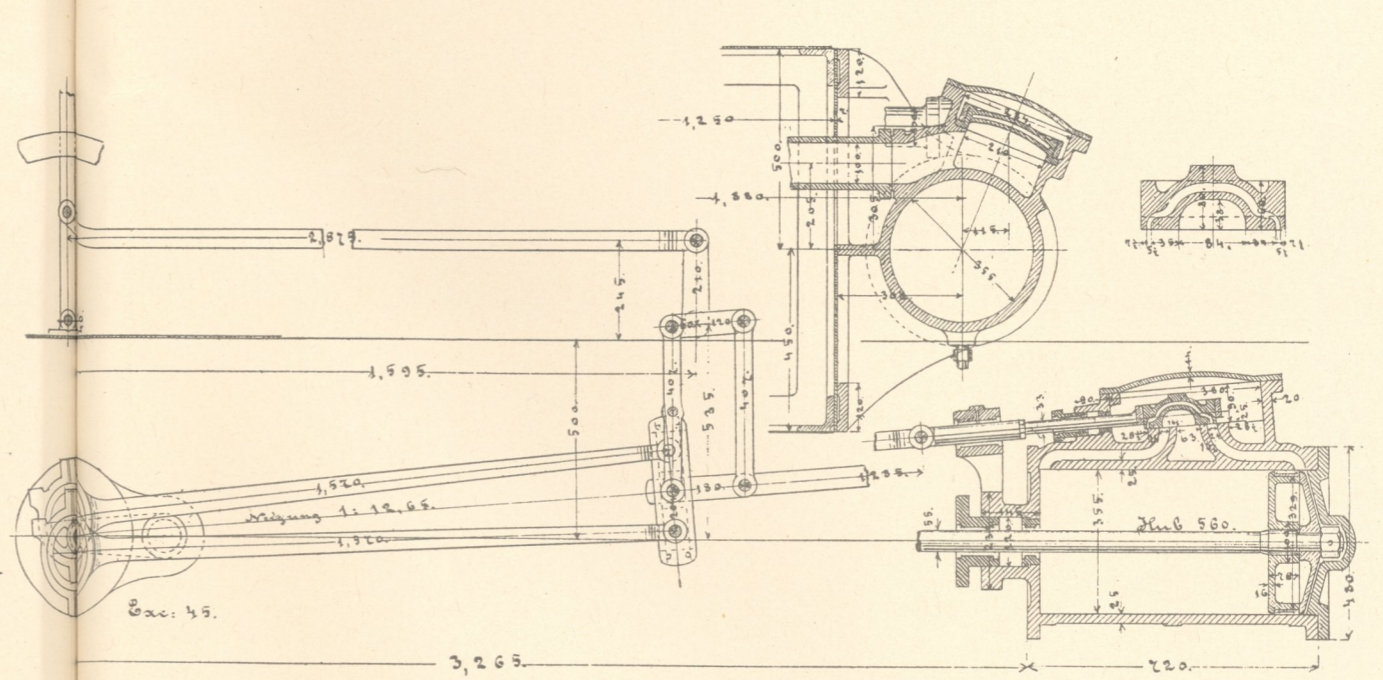
Bauart mit Wasserkasten im Rahmen.



M. 1:47.



Dienstg. 21,25 t; Reibungsg. 21,25 t; Heizfl. 74,78 m<sup>2</sup>; Rostfl. 0,95 m<sup>2</sup>; p = 10 atü;  
d = 355 mm; h = 560 mm; D = 1500 mm; Radst. 2450 mm; Leist. 252 PS; (46 km/h).



M. 1:19.

