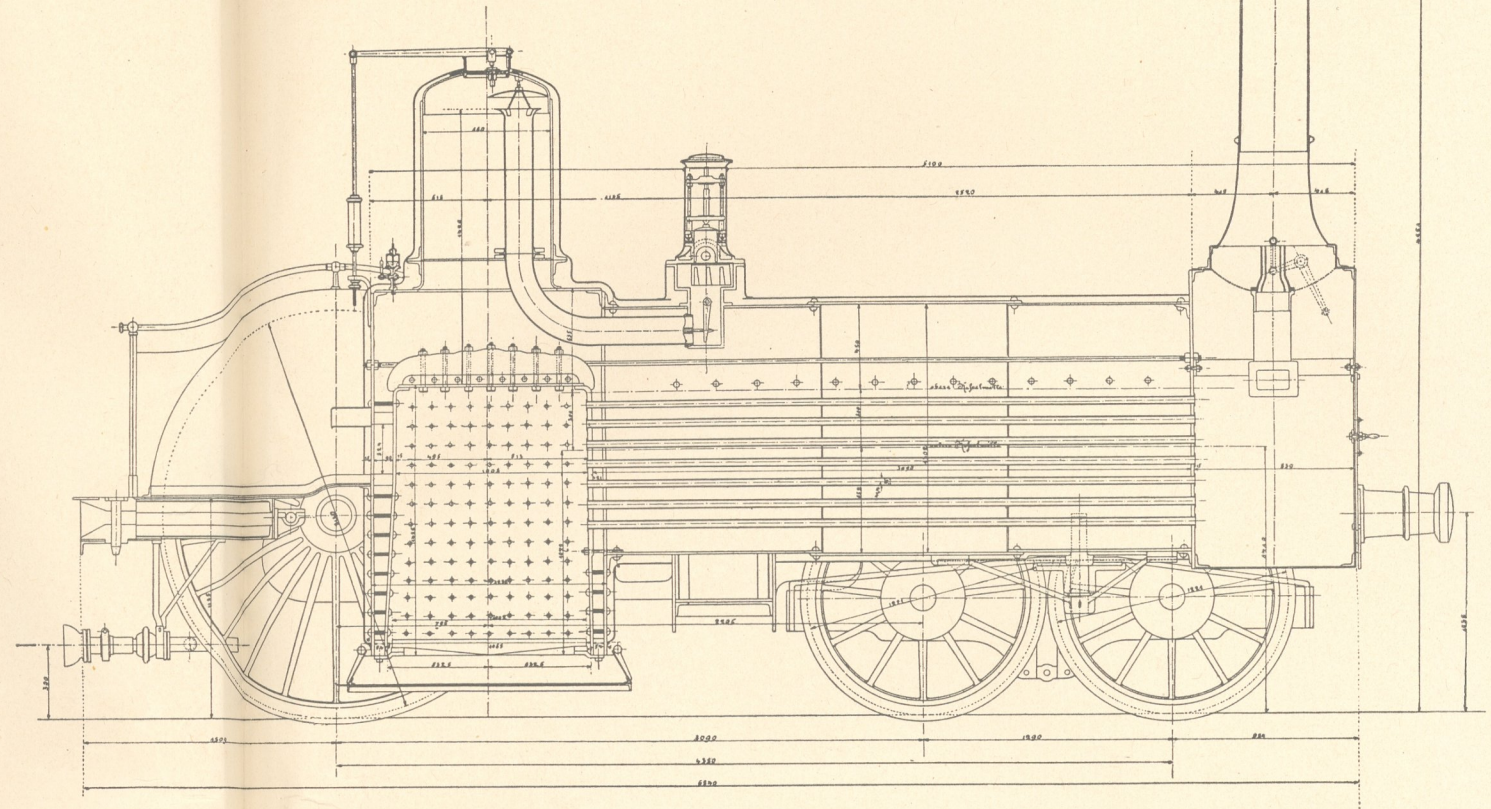
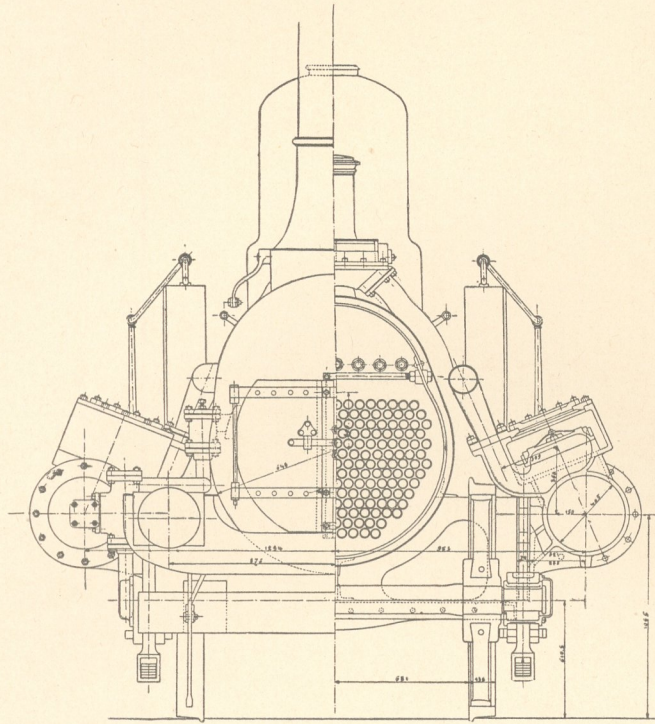


2 A-Crampton, Badische Staatsbahn.

Erb. Mbg. Karlsruhe 1854/55.

Außenrahmen, Hallsche Kurbeln, Birnkessel, Drehgestell.

Dienstg. 28,5 t; Reibungsg. 13 t; Heizfl. 81,79 m²;
Rostfl. 1,07 m²; p = 7 atü; d = 405 mm; h = 560 mm;
D = 2130 mm; Radst. 4380 mm; Leist. 235 PS_i (46 km/h).



M. 1:40.
1m 0,5 0 0,5 1 1,5 2,5 3m

