

Fig.1 Unterhaupt (Schnitt EF) Fig.1-6. Schleuse in der Oder zu Breslau.

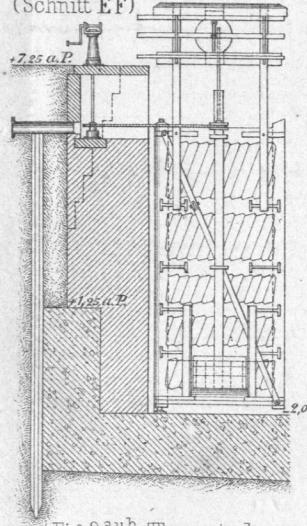


Fig. 2^{a,b} Oberhaupt. M. 0,005.

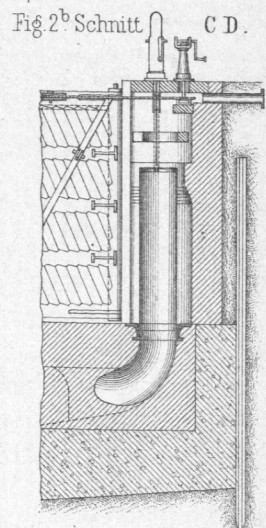
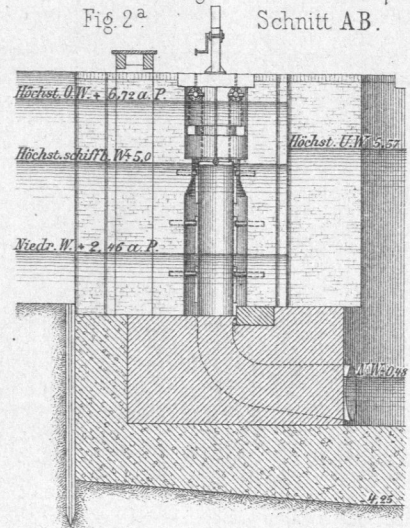


Fig. 3^{a,b} Thorwinde und Umlaufventil. M. 0,015.

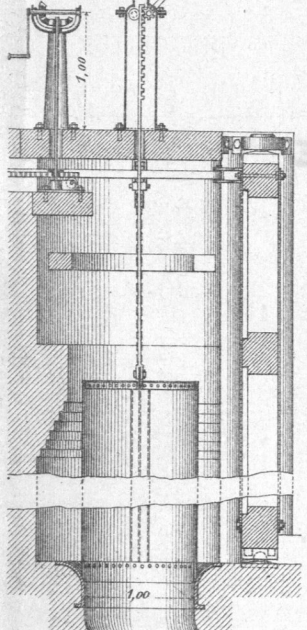


Fig. 3^b Grundriss der Ventilnische.

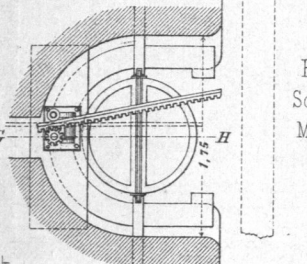


Fig. 4. Grundriss. M. 0,005.

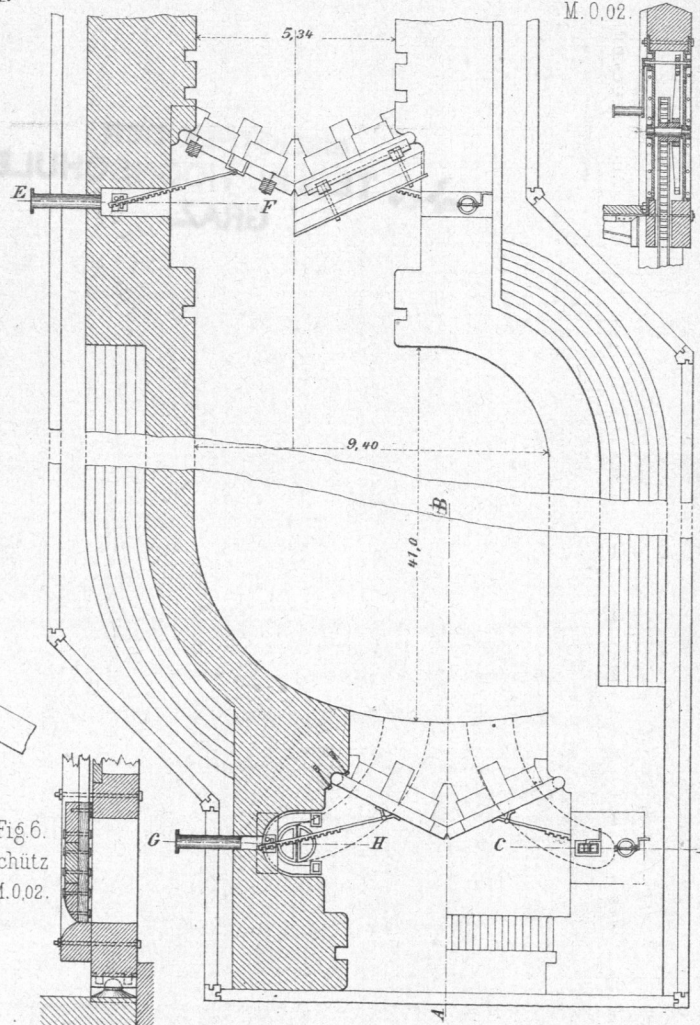
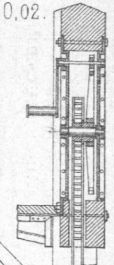


Fig. 5. Schützwinde M. 0,02.



Schiffsschleusen.

Fig.7-9. Thorflügel der Canada-Docks zu Liverpool. M. 0,0094.

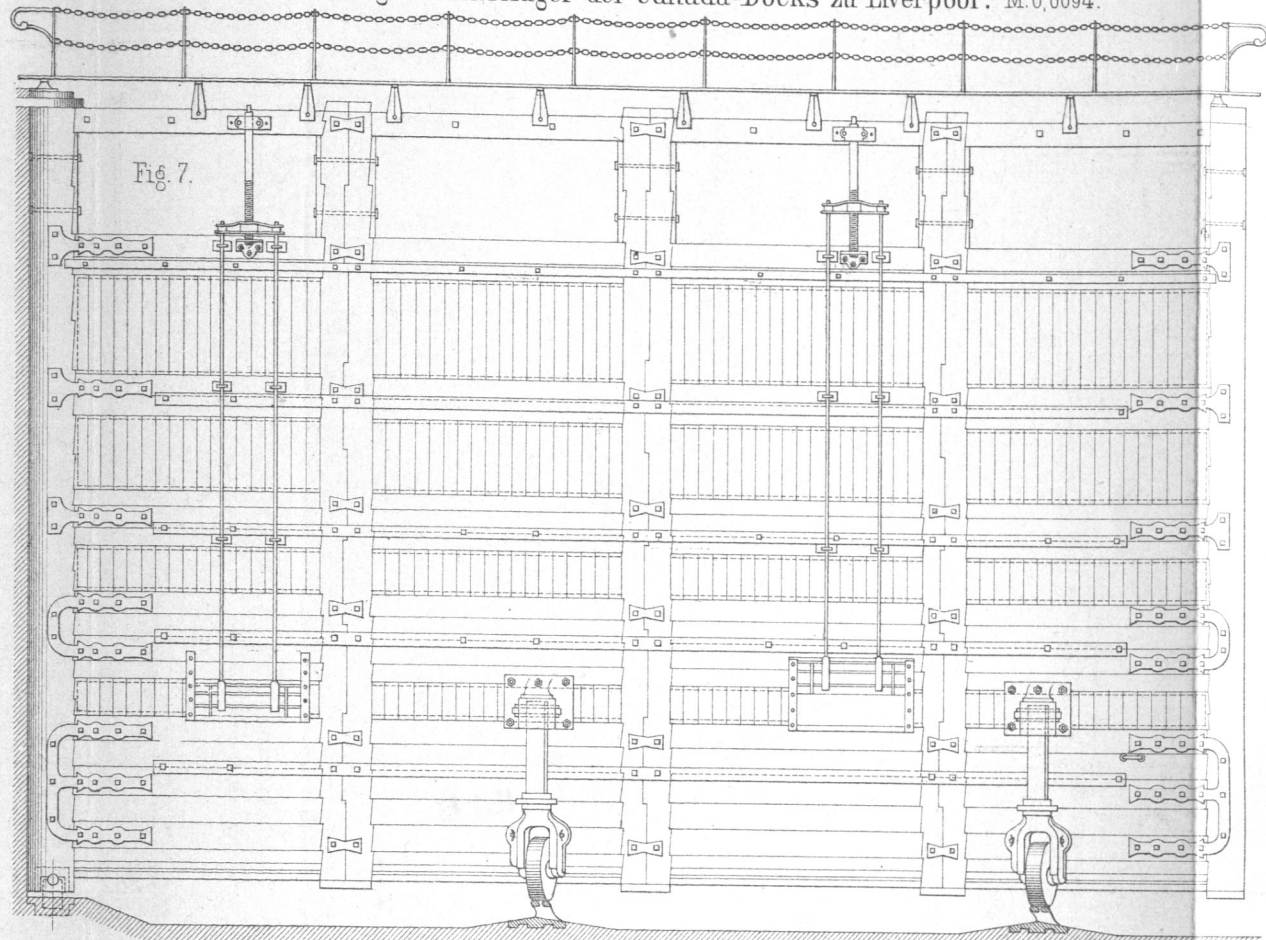


Fig. 8.

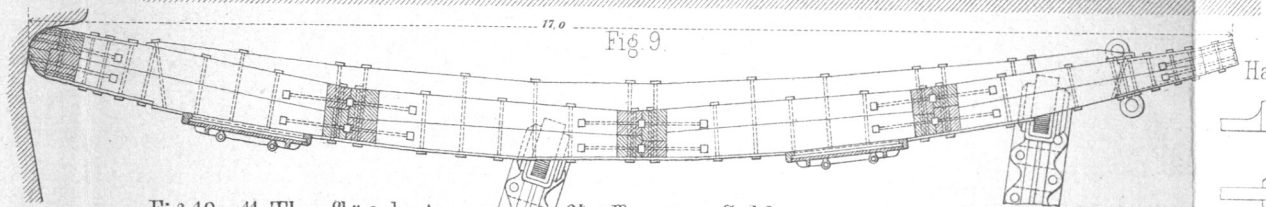
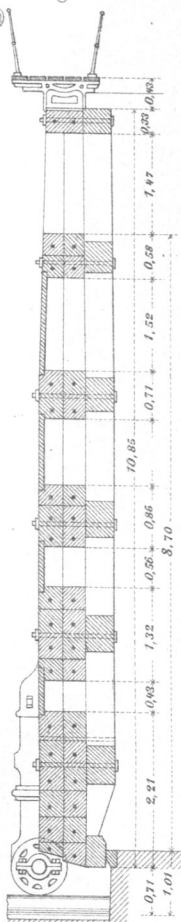


Fig. 10 u. 11. Thorflügel einer 24,4^m weiten Schleuse zu Antwerpen.

Fig. 10. Horizontalschnitt. M. 0,01.

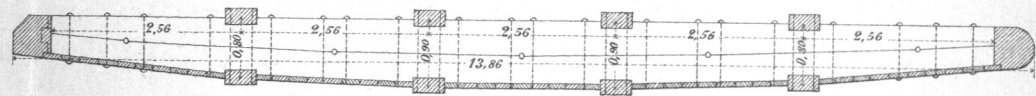


Fig. 12. Thorflügel einer 30,5^m weiten Schleuse zu Havre. M. 0,0107.

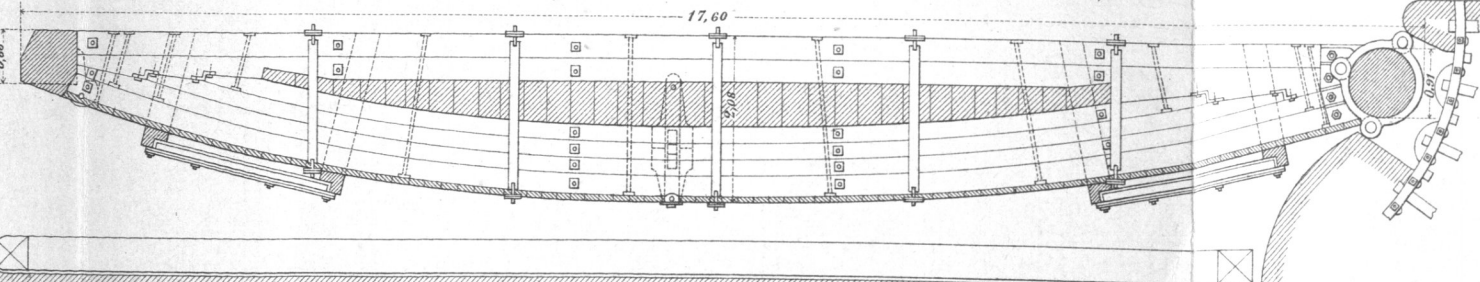


Fig. 11. Halsband. M. 0,02.

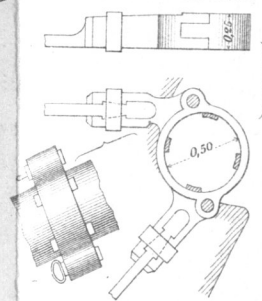


Fig. 13-15. Thorflügel der Schleuse zu Ablon. M. 0,0125.

Fig. 13. Ansicht der Unterwasserseite.

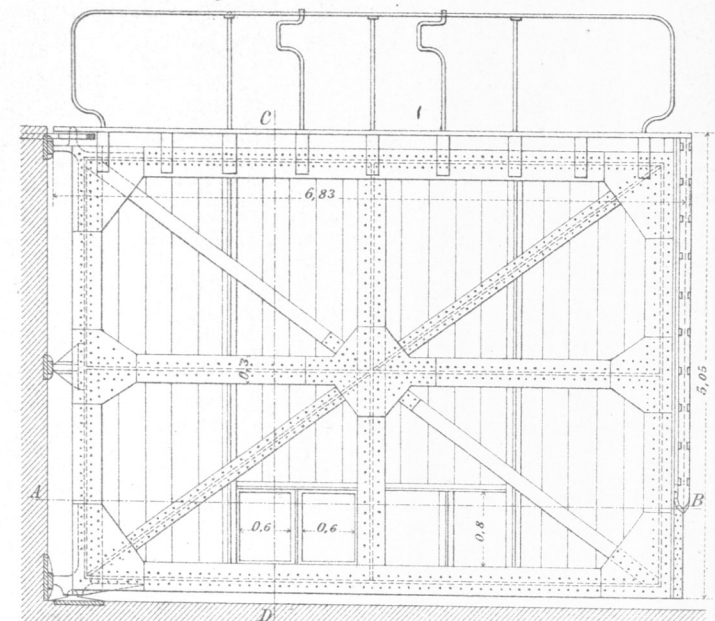


Fig. 14. Horizontalschnitt A B.

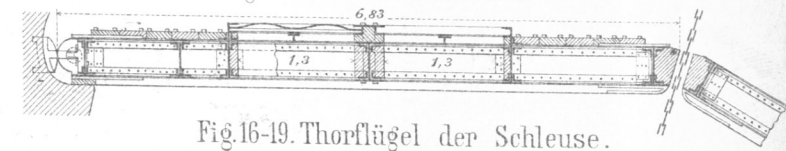


Fig. 16-19. Thorflügel der Schleuse zu Willemsoord.

Fig. 16. Innere Ansicht. Fig. 17. Aussere Ansicht. M. 0,008.

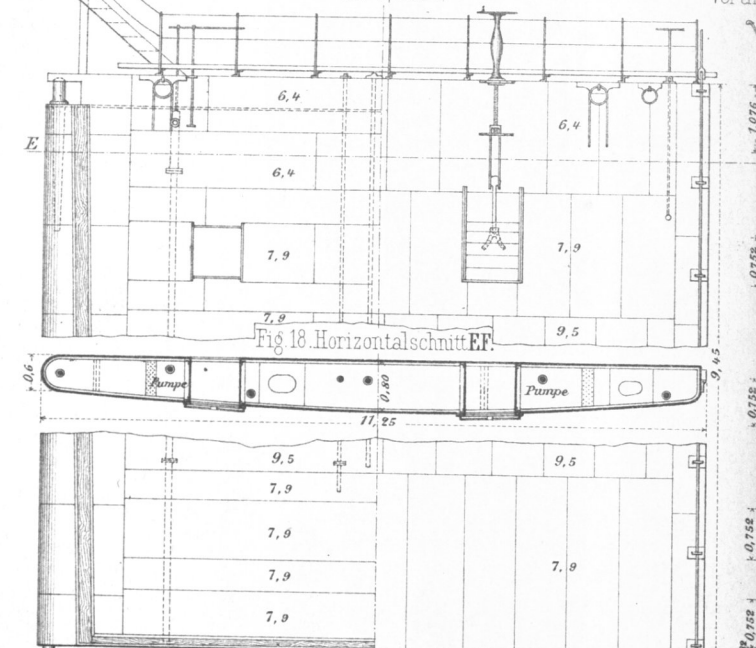


Fig. 19. Vertikalschnitt.