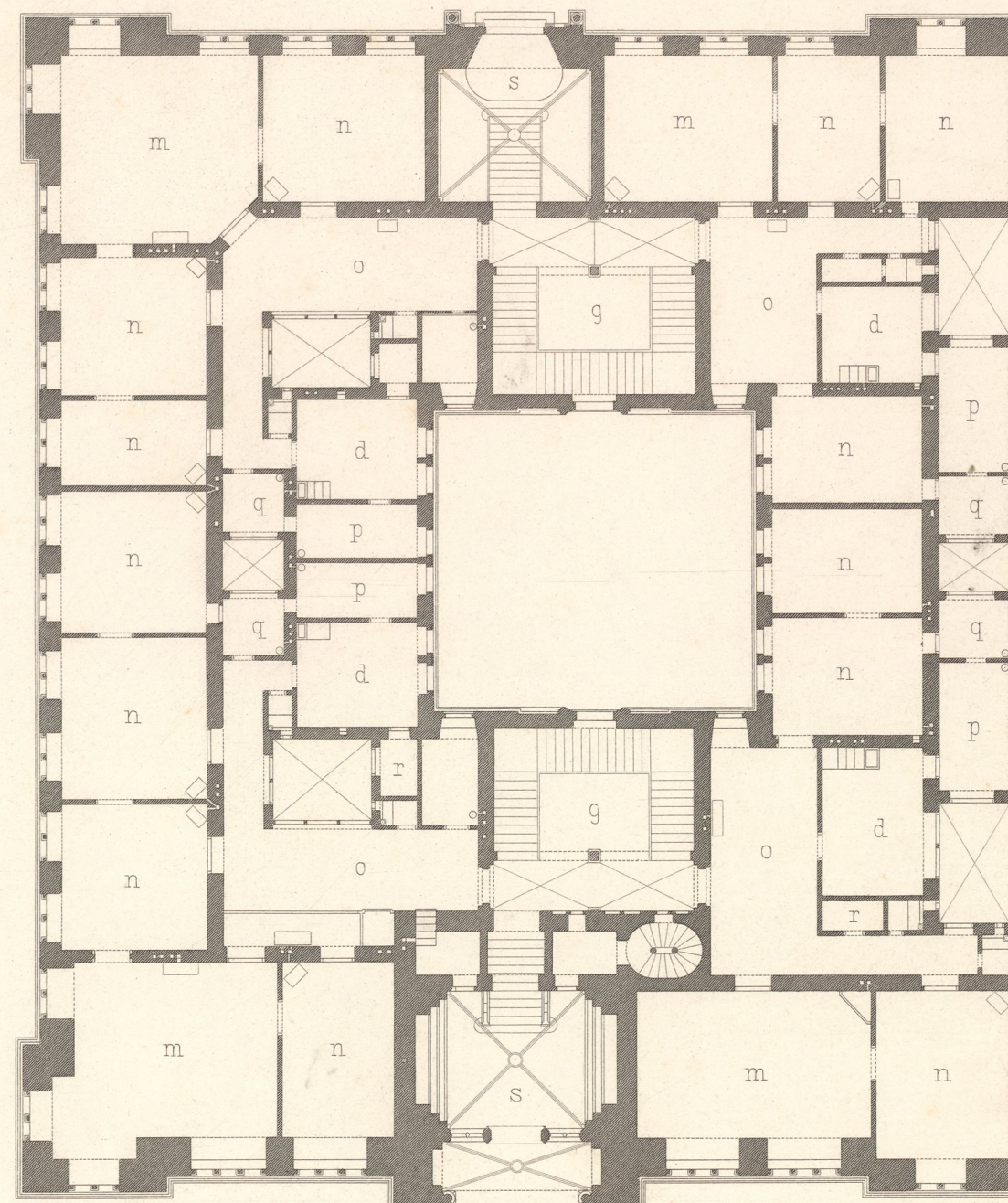
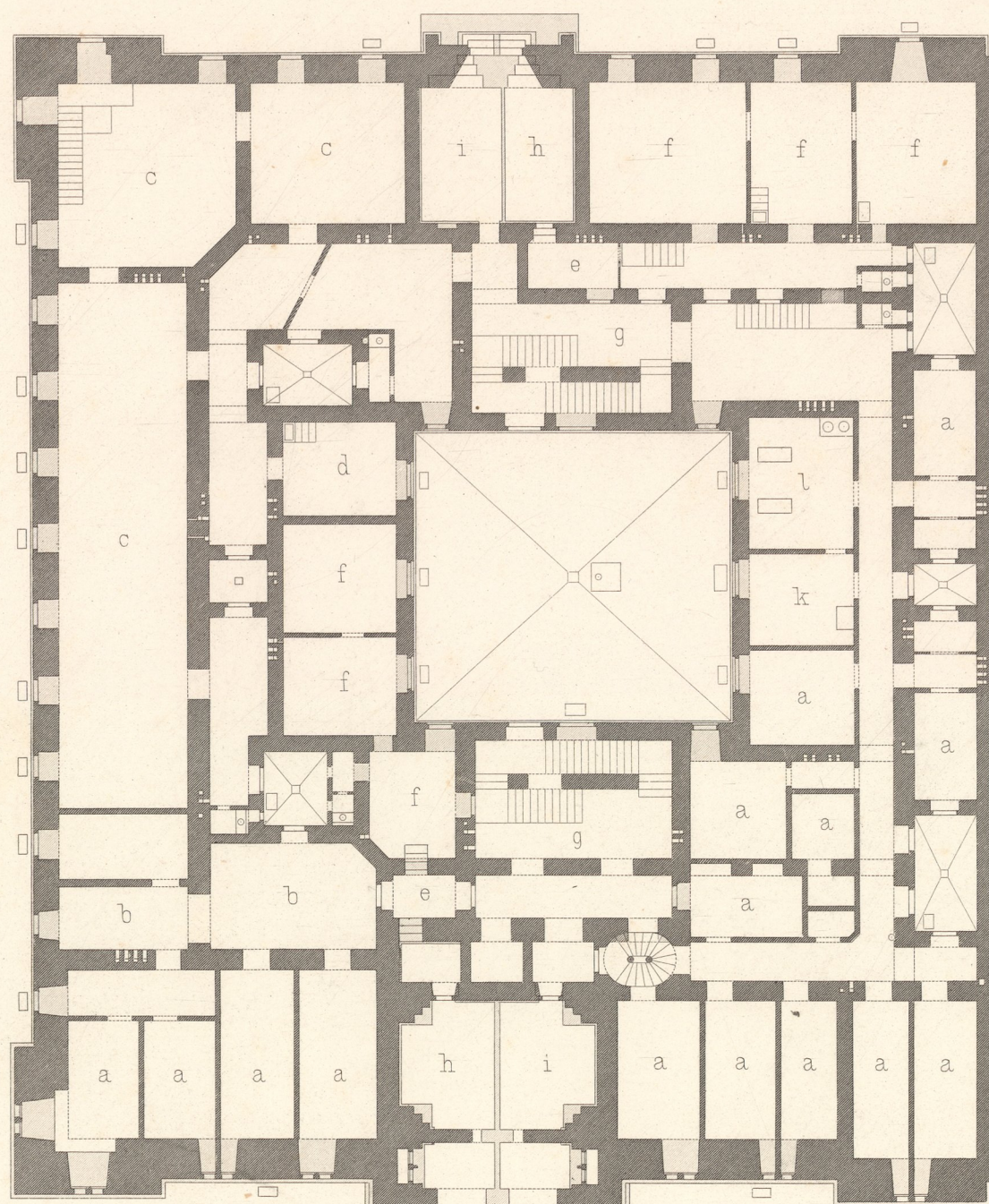


SCHOTTENRING N° 7.



- | | | |
|---------------|----------------|---------------------|
| a Keller | g Treppe | n Zimmer |
| b Holzeinwurf | h Wassermesser | o Vorzimmer |
| c Magazin | i Gasmesser | p Dienstbotenzimmer |
| d Küche | k Bügelkammer | q Bad |
| e Portier | l Waschküche | r Speisekammer |
| f Wohnung | m Salon | s Vestibule |



- | | | |
|----------------------------|----------------------|---------------------|
| a Cave | g Escalier | n Chambre |
| b Descente de combustibles | h Hydromètre | o Antichambre |
| c Magazin | i Gazomètre | p Chambre d domest. |
| d Cuisine | k Chambre à repasser | q Bain |
| e Concierge | l Buanderie | r Garde-manger |
| f logement | m Salon | s Vestibule |

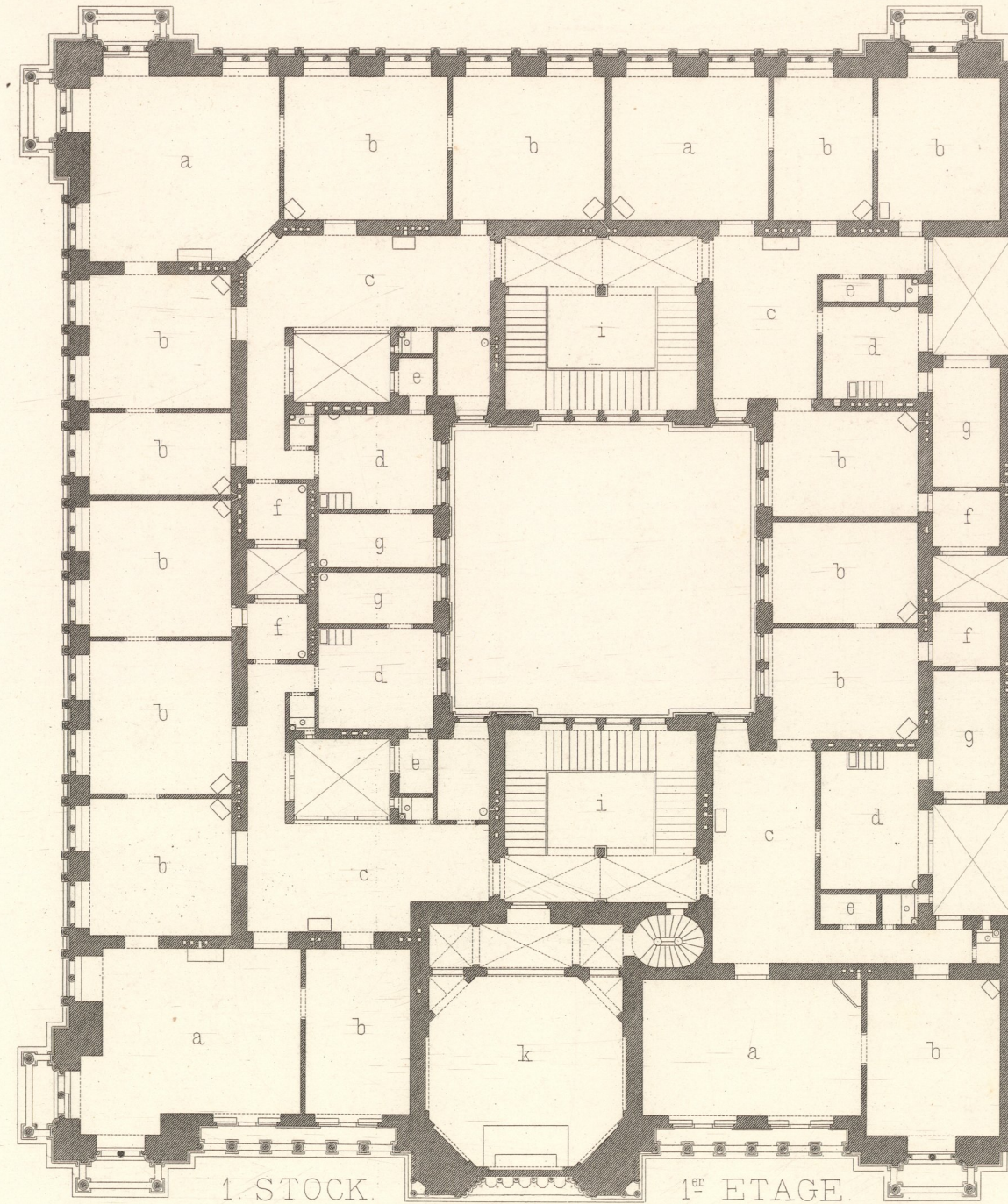
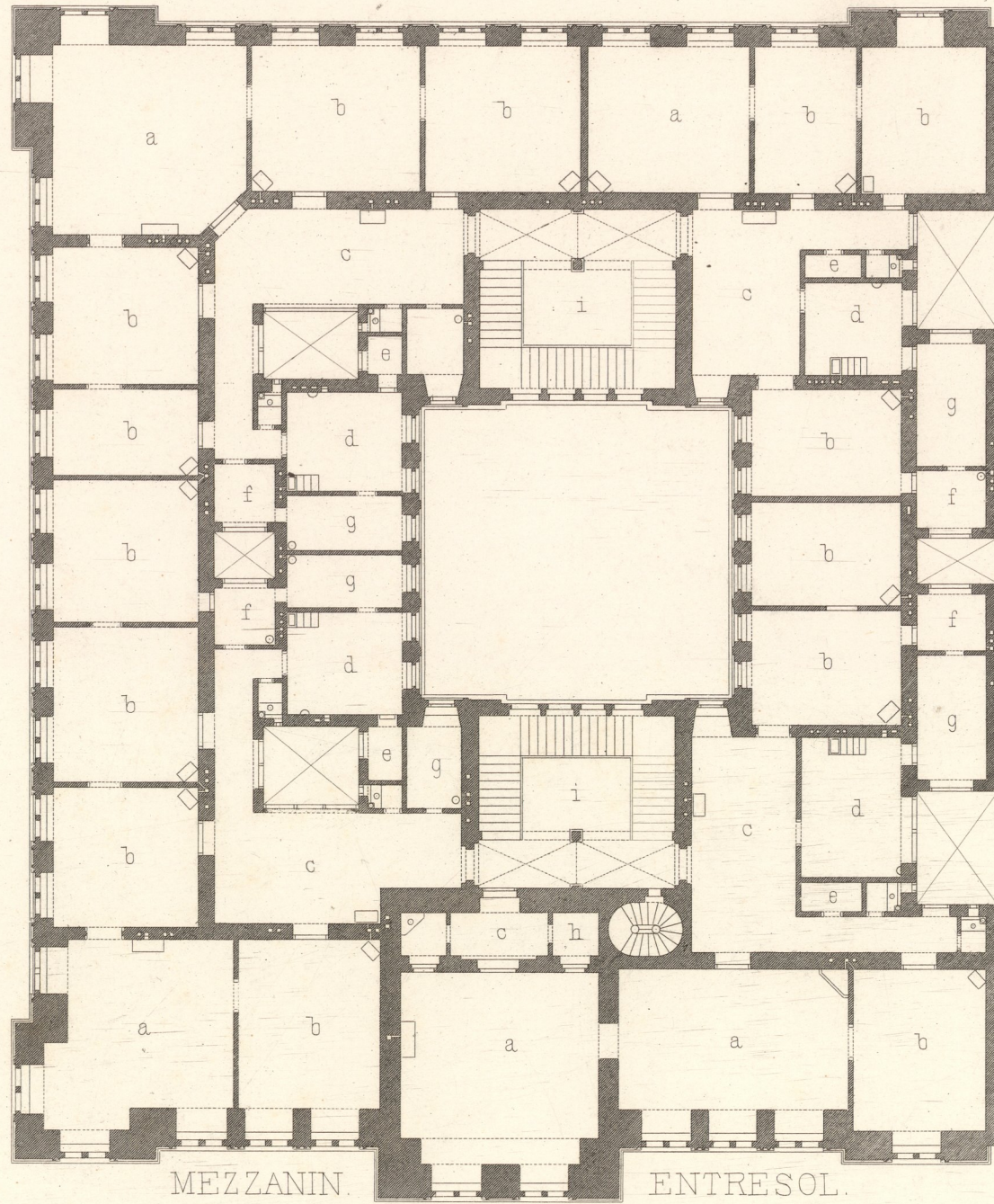
Wien, Ad. Lehmann.

F. Schmidt, Archit.

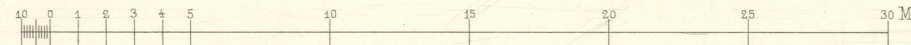
Atel. Bültemeyer sc.

Impr F. Kargl, Wien.

SCHOTTENRING N° 7.

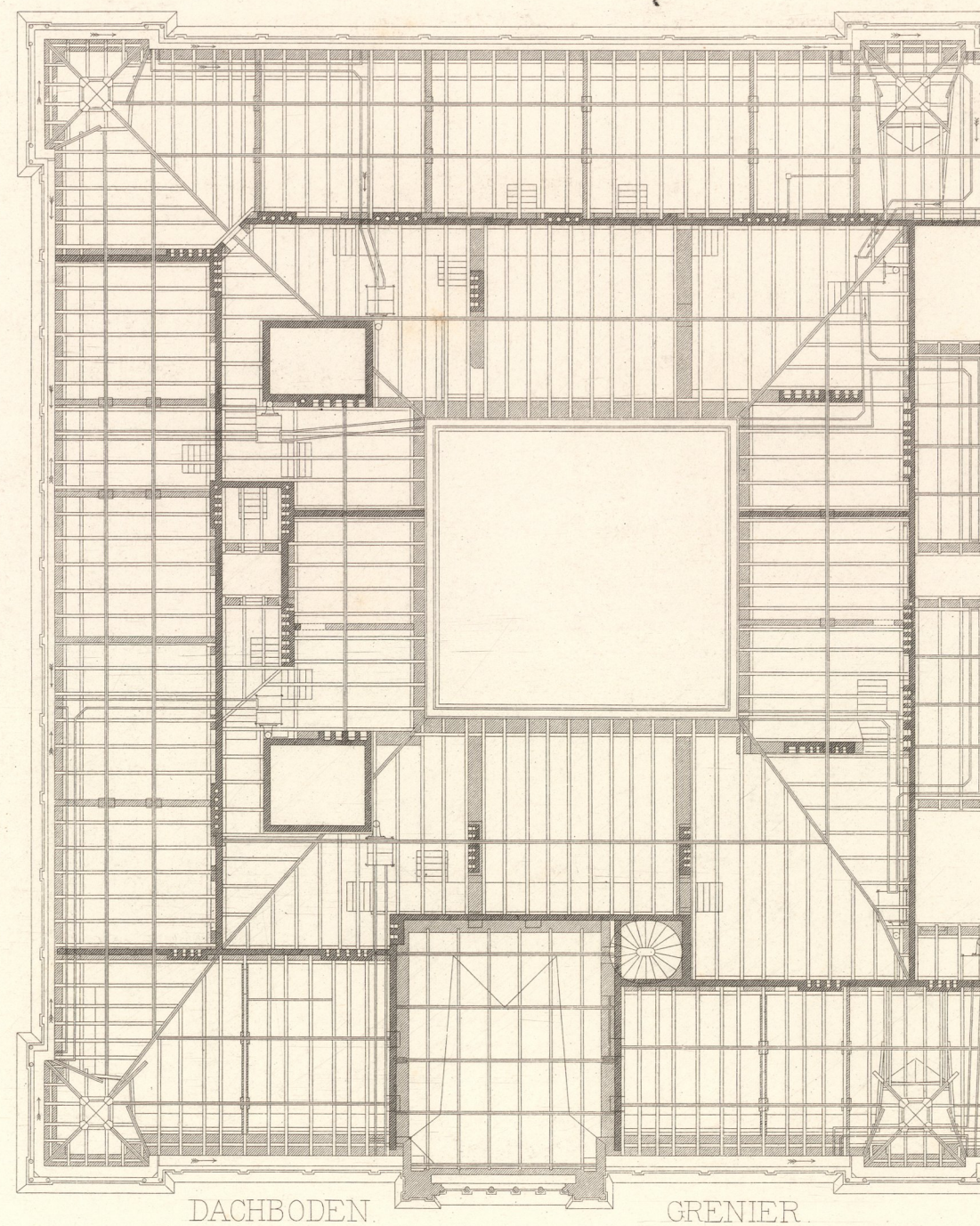
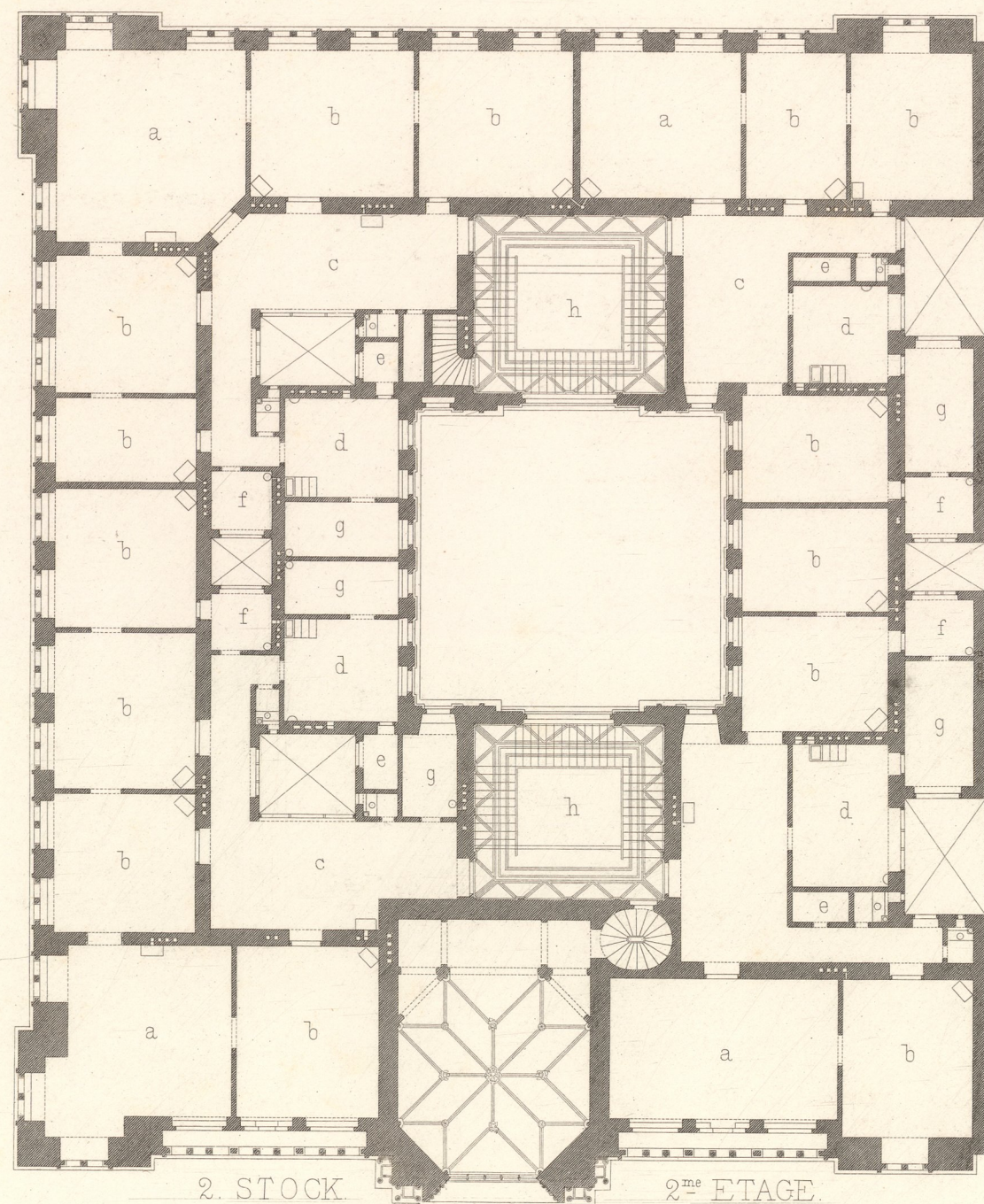


- | | |
|----------------|---------------------|
| a Salon | f Bad |
| b Zimmer | g Dienstbotenzimmer |
| c Vorzimmer | h Garderobe |
| d Küche | i Treppe |
| e Speisekammer | k Kapelle |



- | | |
|----------------|----------------------|
| a Salon | f Bain |
| b Chambre | g Chambre d. domest. |
| c Antichambre | h Garderobe |
| d Cuisine | i Escalier |
| e Garde-manger | k Chapelle |

SCHOTTENRING N° 7.



- | | |
|-------------|-------------------|
| a Salon | e Speisekammer |
| b Zimmer | f Bad |
| c Vorzimmer | g Diensthofzimmer |
| d Küche | h Treppe |

- | | |
|---------------|----------------------|
| a Salon | e Garde-manger |
| b Chambre | f Bain |
| c Antichambre | g Chambre d. domest. |
| d Cuisine | h Treppe |

