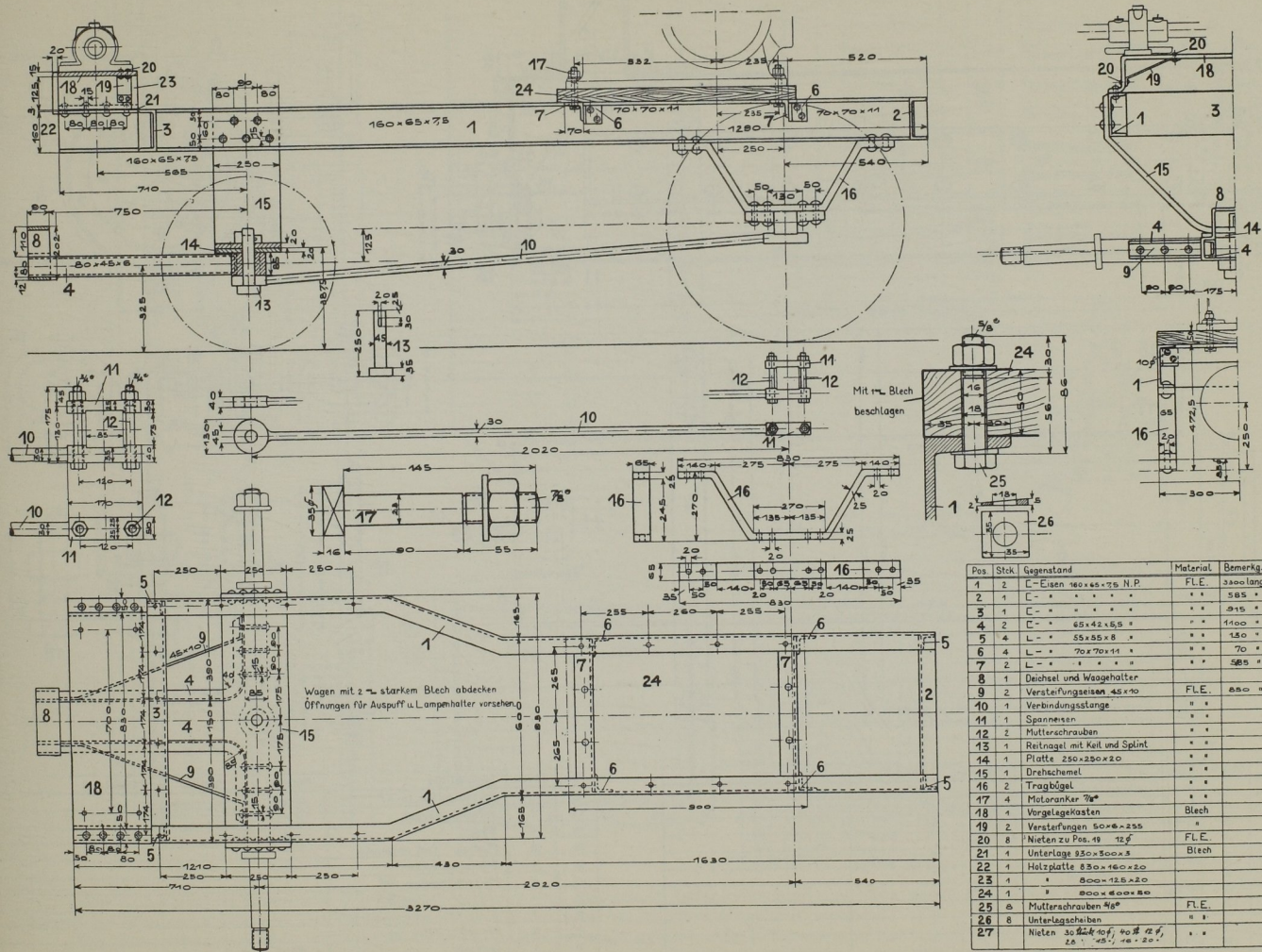


Fahrgestell.



Pos	Stck	Gegenstand	Material	Bemerkg.
1	2	C-Eisen 160x65x75 N.P.	F.L.E.	3600 lang
2	1	" " " " " "	" "	585 "
3	1	" " " " " "	" "	2915 "
4	2	C " 65x45x55 "	" "	1100 "
5	4	L " 55x55x8 "	" "	150 "
6	4	L " 70x70x11 "	" "	70 "
7	2	L " " " " "	" "	585 "
8	1	Deichsel und Waagehalter	" "	" "
9	2	Verstärkungsseisen 45x10	F.L.E.	880 "
10	1	VerbindungsLänge	" "	" "
11	1	Spannseisen	" "	" "
12	2	Mutterschrauben	" "	" "
13	1	Reinigung mit Keil und Splint	" "	" "
14	1	Platte 250x250x20	" "	" "
15	1	Drehschemel	" "	" "
16	2	Tragbögel	" "	" "
17	4	Motoranker 7/8"	" "	" "
18	1	Vorgelegekasten	Blech	" "
19	2	Verstärkungen 50x6x255	F.L.E.	" "
20	8	Nieten zu Pos. 19 12/8	" "	" "
21	1	Unterlage 950x500x3	Blech	" "
22	1	Holzplatte 830x160x20	" "	" "
23	1	" 800x125x20	" "	" "
24	1	" 800x600x20	" "	" "
25	8	Mutterschrauben 4/6"	F.L.E.	" "
26	8	Unterlegscheiben	" "	" "
27	1	Nieten 30 Stück 10/8; 40 Stück 12/8, 20 Stück 12/10, 10 Stück 12/10	" "	" "