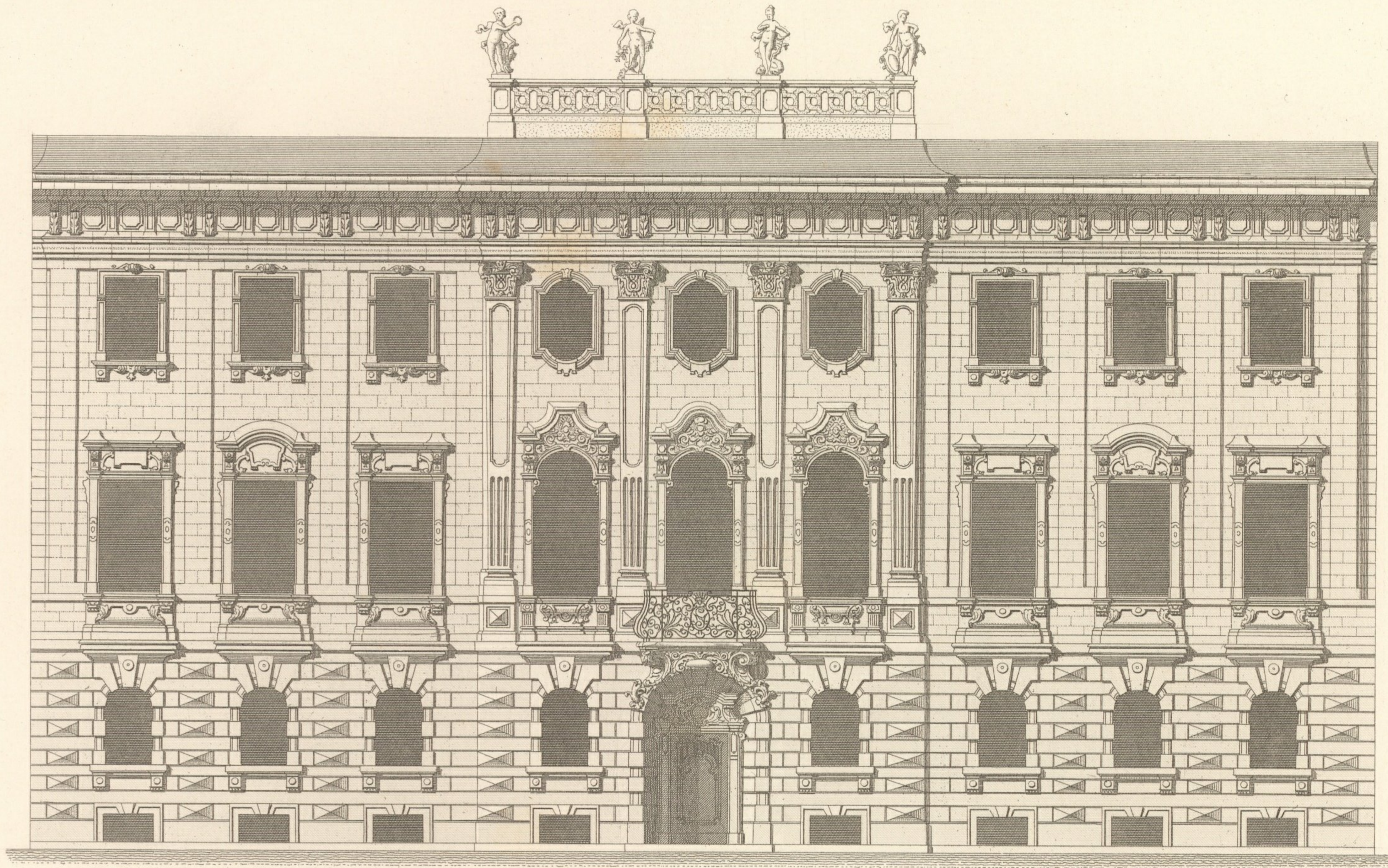


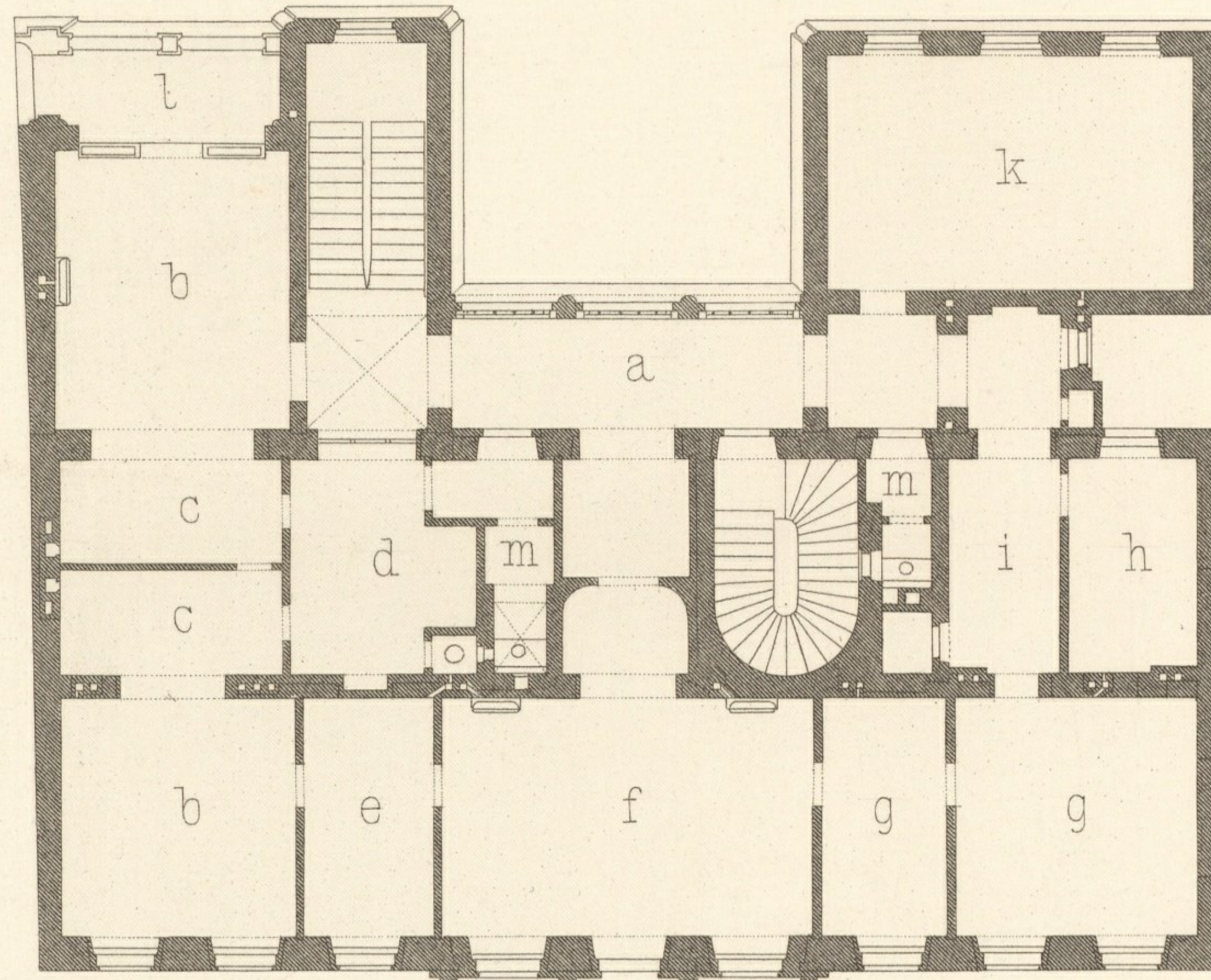
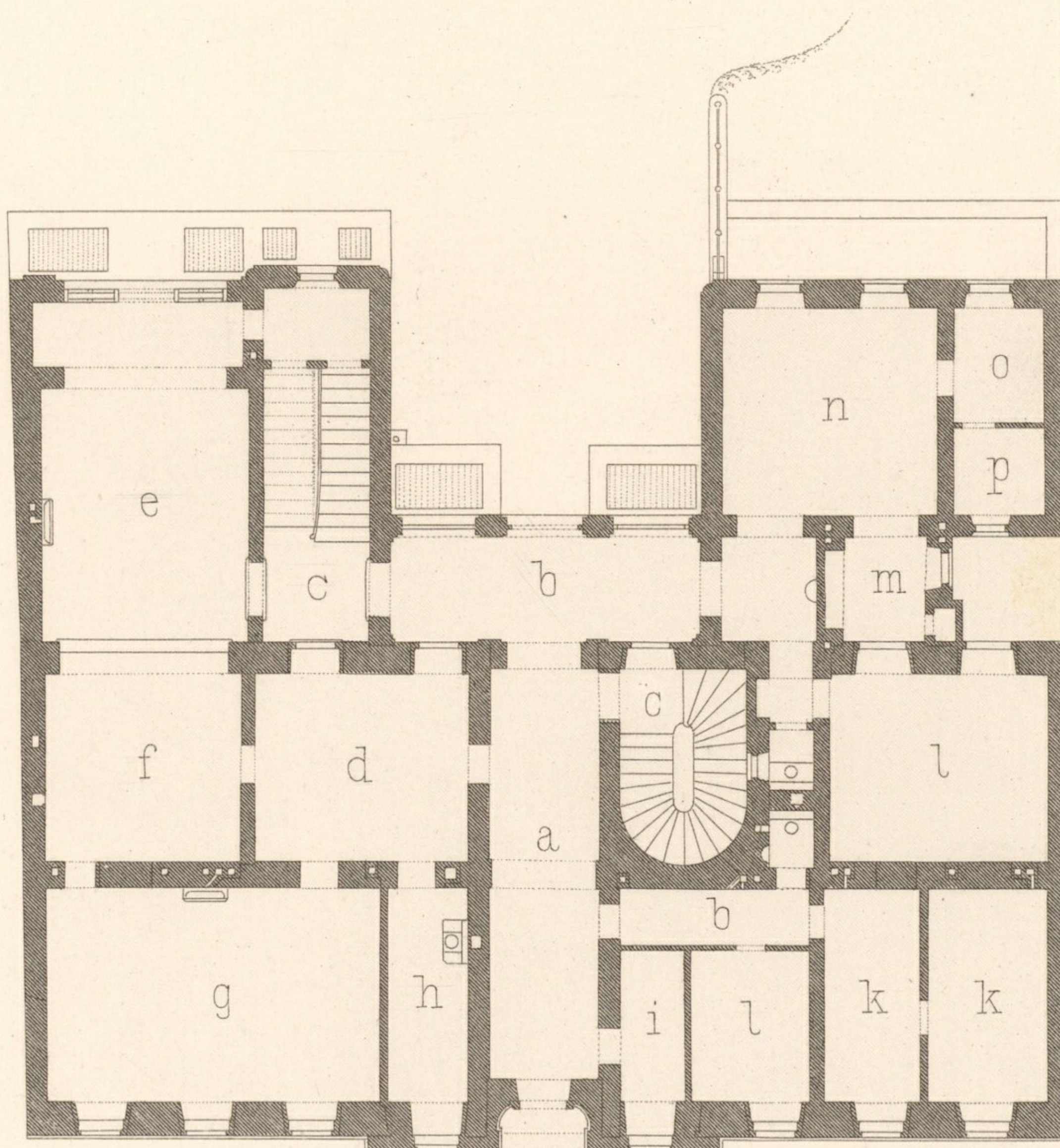
PLÖSSELGASSE N°5.



1 0 1 2 3 4 5 6 7 8 9 10 M.

ERDGESCHOSS - REZ-DE-CHAUSSEE.

I. STOCK - 1^{er} ETAGE.



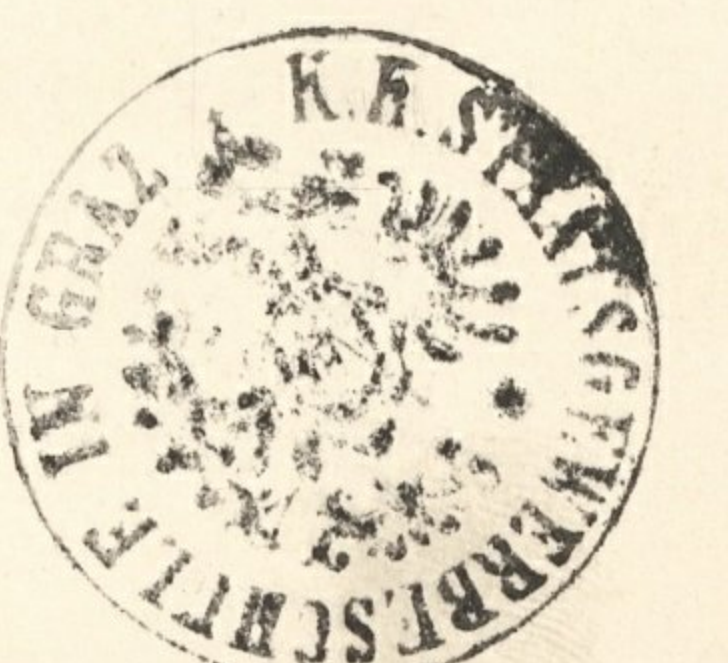
- a Vestibule
- b Corridor
- c Treppe
- d Vorzimmer
- e Speisesaal
- f Buffet
- g Bibliothek
- h Toilette
- i Portier.
- k Diener-Wohnung
- l Dienstbotenzimmer
- m Abwaschraum
- n Küche
- o Geschirrkammer
- p Speisekammer

- a Vestibule
- b Corridor
- c Escalier
- d Antichambre
- e Salle à manger
- f Buffet
- g Bibliothèque
- h Toilette
- i Concierge-
logement
- k Chambre d. domest.
- l Office
- m Office
- n Cuisine
- o Chambre d. varsselle
- p Garde manger

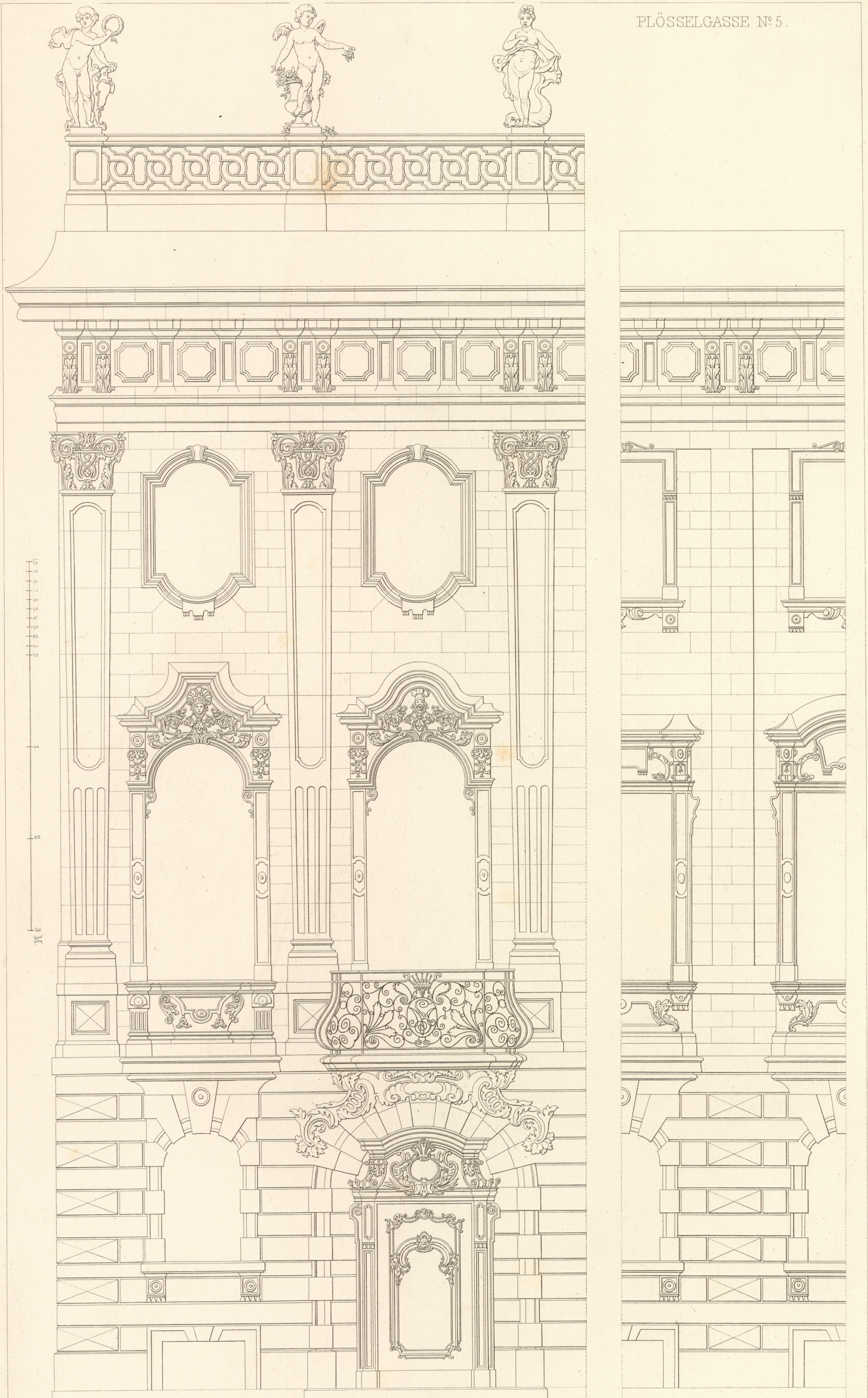
- a Loggia
- b Schlafzimmer
- c Alcoven
- d Bad
- e Boudoir
- f Salon
- g Wohnzimmer
- h Kammerzofe
- i Garderobe
- k Fremdenzimmer
- l Terasse
- m Abort

- a Loggia
- b Chambre à coucher
- c Alcove
- d Bain
- e Boudoir
- f Salon
- g Chambres
- h Femme de chambre
- i Garderobe
- k Chambre d' amis
- l Terasse
- m Closet

0 1 2 3 4 5 10 15 20 M.



PLÖSSELGASSE N° 5.



Wien, Ad. Lehmann.

E. Schweigl, Archit.

Atel. Obermeyer sc

Impr. F. Kargl, Wien.

Inventar
Abth. E
Nr. 106

