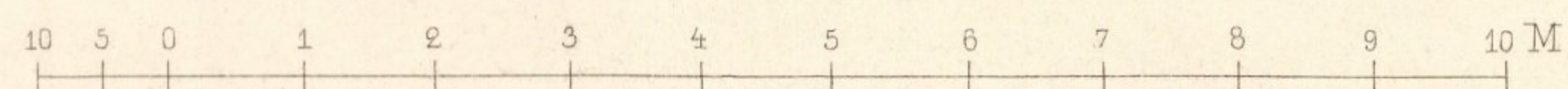


I. TUCHLAUBEN N° 14-16.



F. SCHEIDL M^o J. GRÜNHUT MATTONI-HOF MINERALWASSER QUELLENPRODUCTE



Wien, Ad. Lehmann.

G. Korompay, Archit.

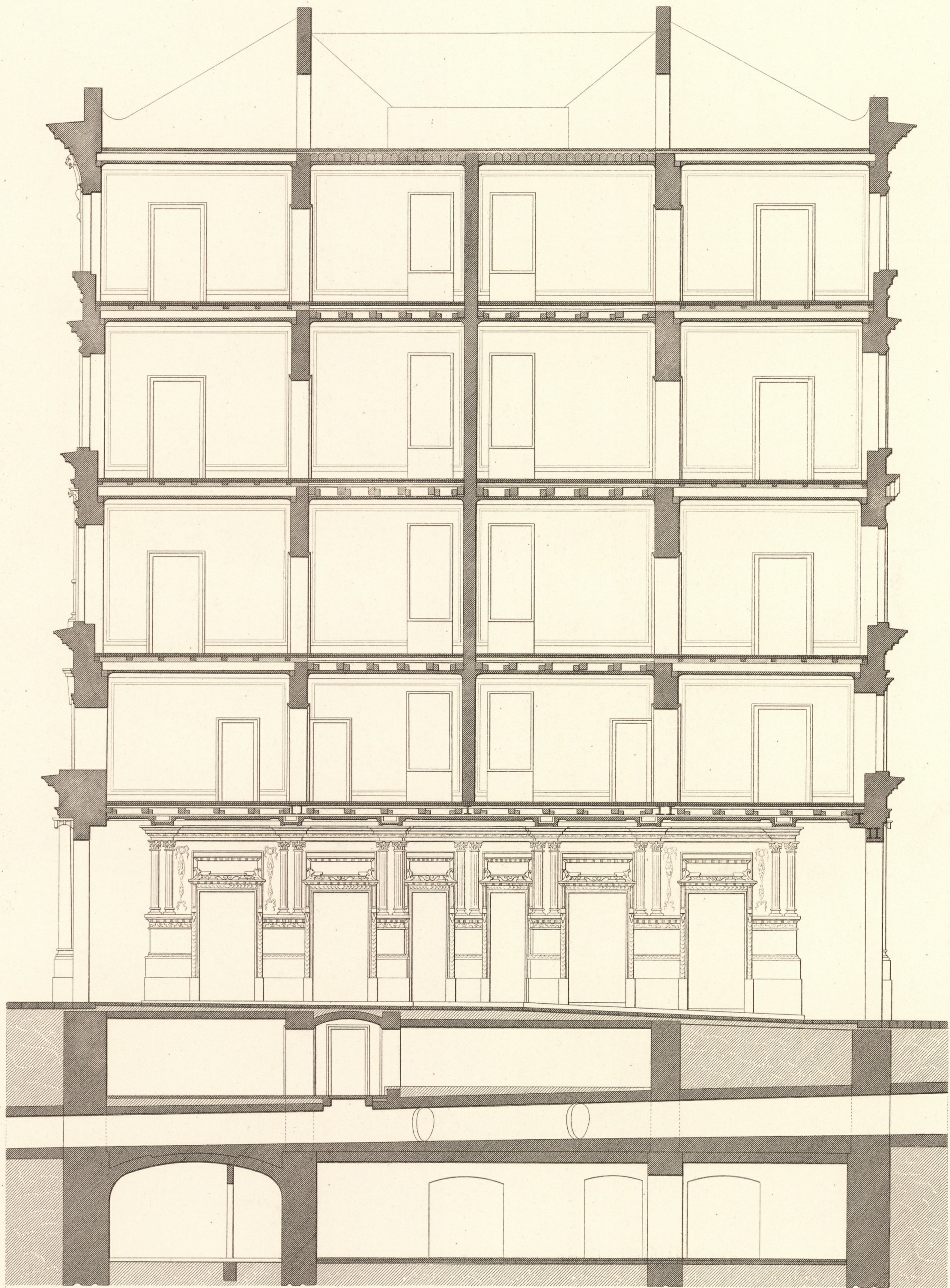
Atel. Obermayer sc.

Inve tar
Abh. E
Nr. 106

Imp. F. Kargl, Wien.



I. TUCHLAUBEN N° 14-16.



Wien, Ad. Lehmann.

G. Korompay, Archit.

Atel. Obermayer sc.

Inventar
Abth. E
Nr. 106

Imp. F. Kargl, Wien.



I. TUCHLAUBEN N° 14-16.

A KELLER

- a Mineralwasser Keller
- b Zugang
- c Magazinstreppe
- d Aufzug
- e Kellertreppe
- f Parthelkeller
- g Holzeinwurf

B UNTERGESCHOSS

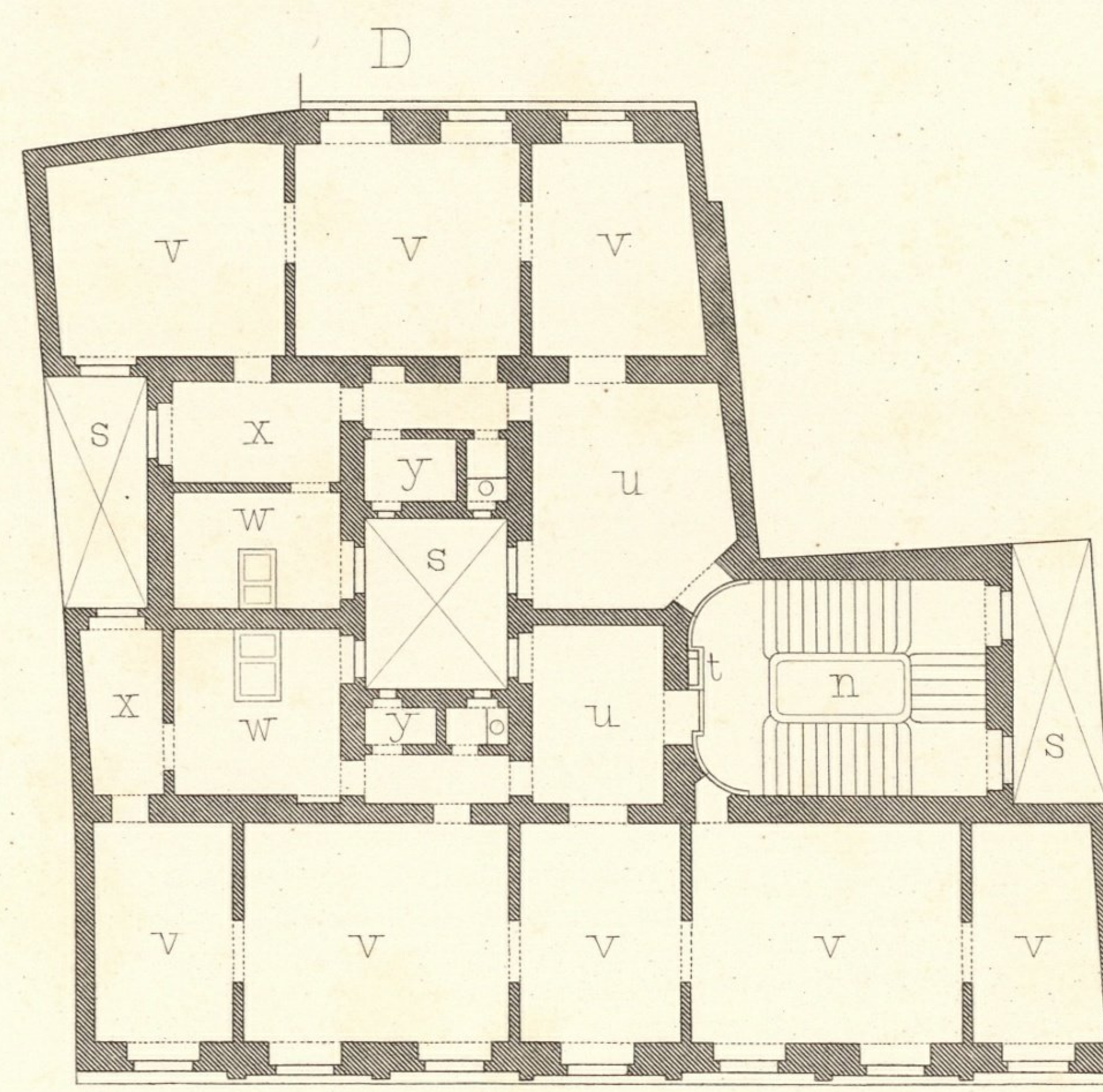
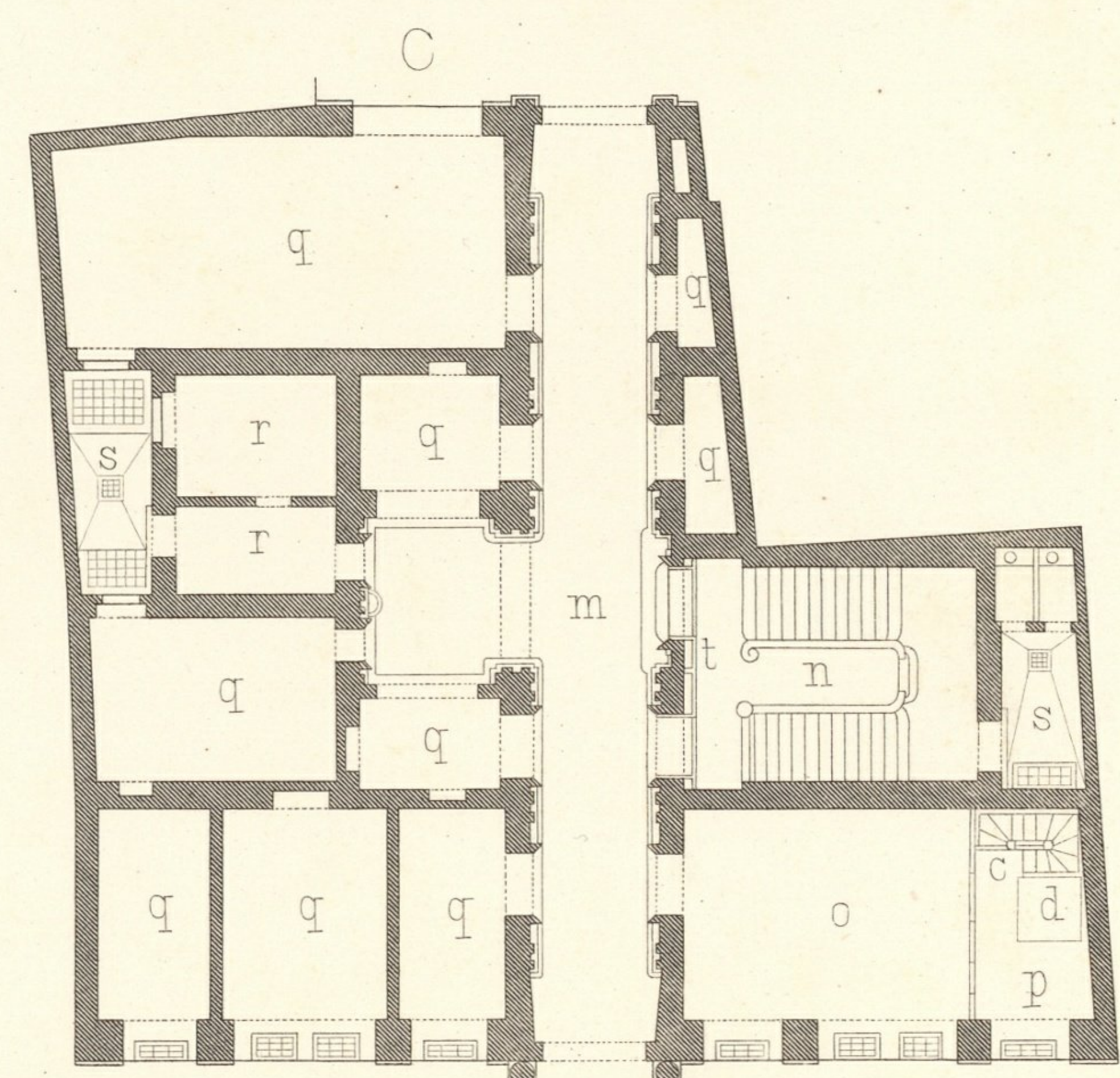
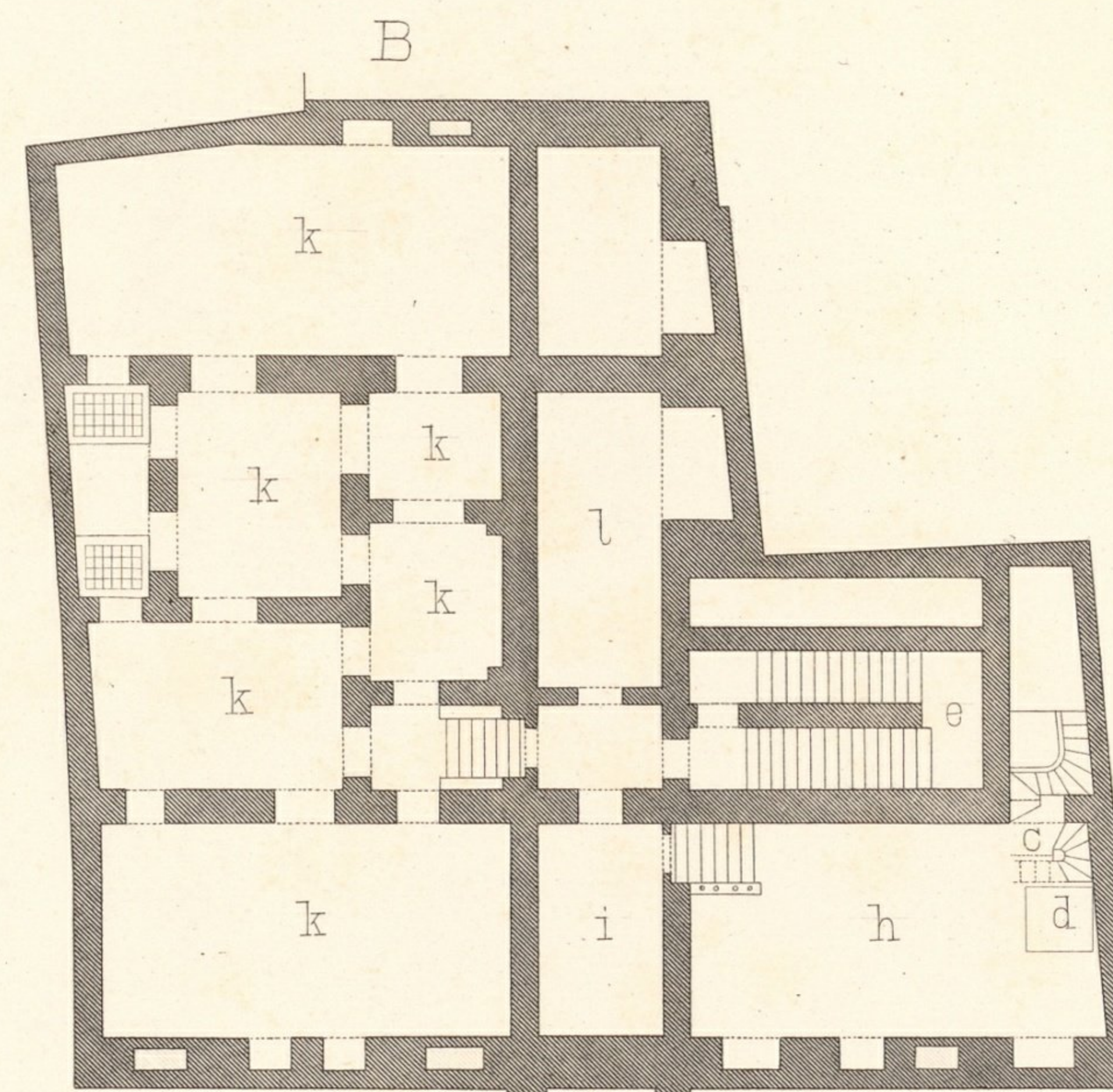
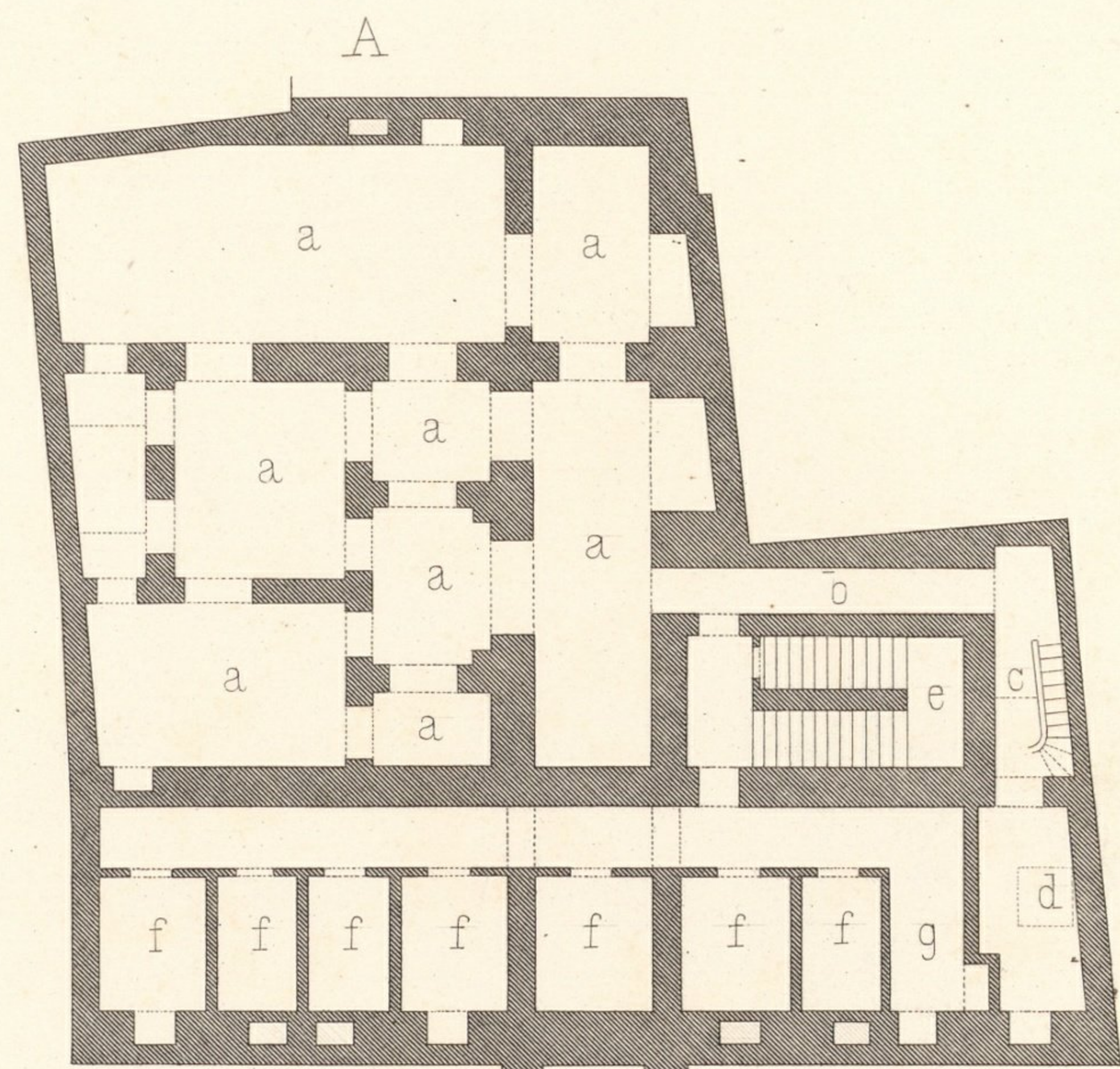
- h Manipulation
- i Packraum
- k Souterrainlocale
- l Kistendepôt

C ERDGESCHOSS

- m Öffentlicher Durchgang
- n Stiege
- o Verkauflocal
- p Magazin
- q Gewölbe
- r Hausmeister Wohnung
- s Lichthöfe
- t Briefaufzug

D I.II.u.III STOCK

- u Vorzimmer
- v Wohnräume
- w Küche
- x Dienstbotenzimmer
- y Speise-Kammer



A CAVE

- a Dépôt d'eau minérale
- b Couloir
- c Escalier du magasin
- d Monte charge
- e Escalier desservant les caves
- f Caves
- g Descente de combustibles

B SOUS-SOL

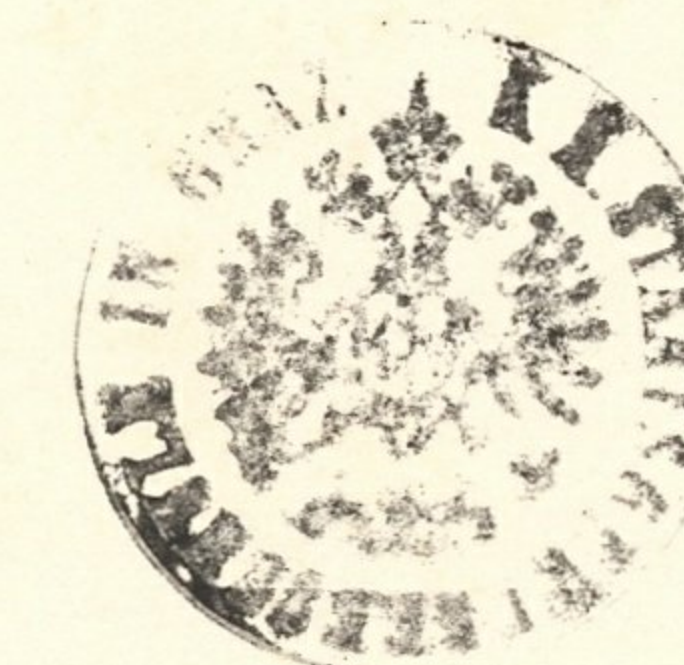
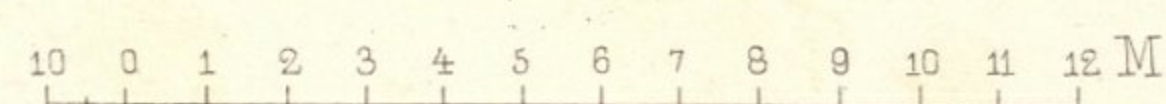
- h Laboratoire
- i Emballage
- k Magasins
- l Caisses d'emballage

C REZ-DE-CHAUSSEE

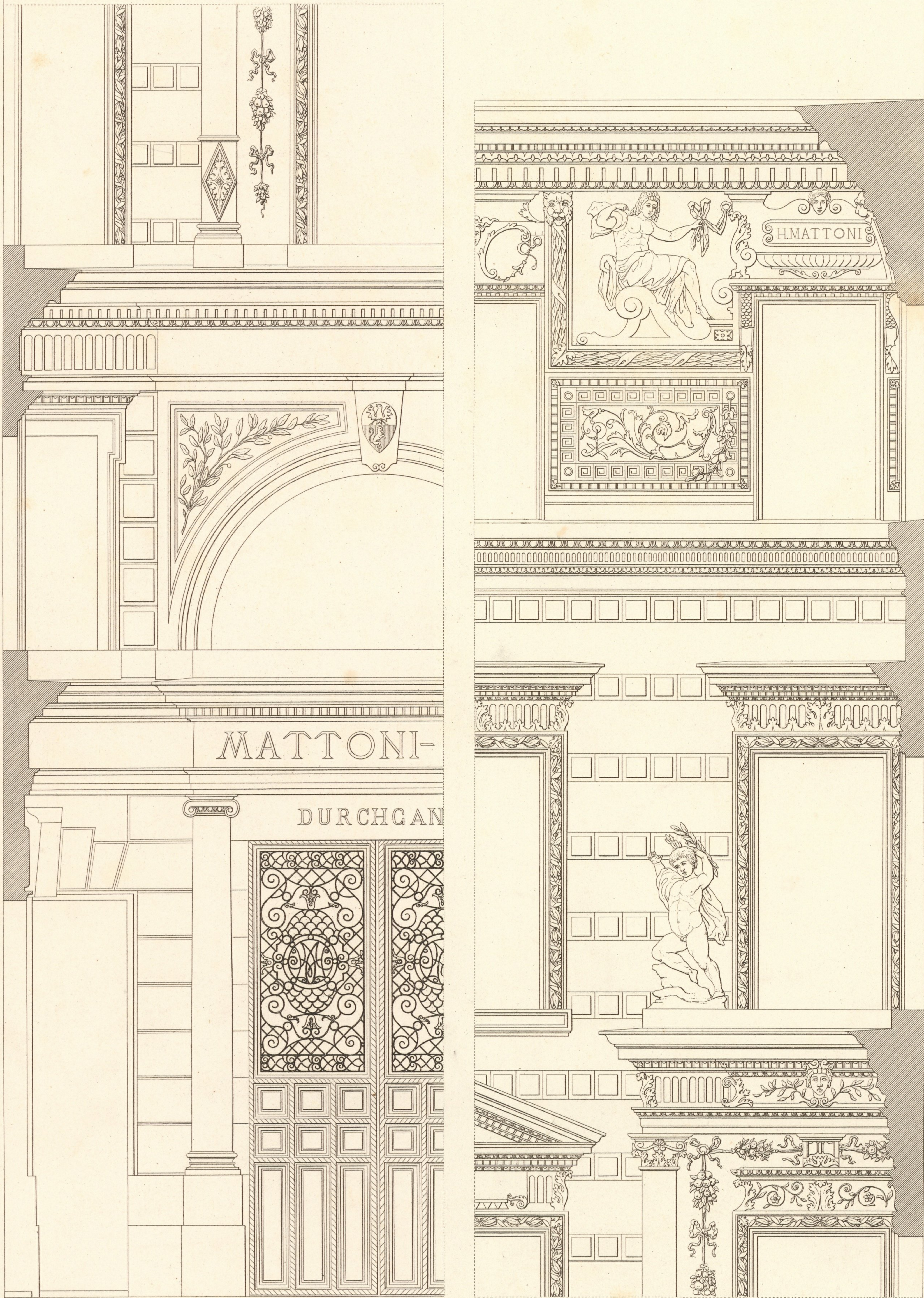
- m Passage
- n Escalier
- o Magasin
- p Dependence
- q Magasins
- r Concierge
- s Cours
- t Monte lettre

D I.II.et III. ETAGE

- u Antichambre
- v Chambre
- w Cuisine
- x Chambre de domestique
- y Garde manger



I. TUCHLAUBEN N° 14-16.



0 1 2 3 4 M.

Wien, Ad. Lehmann.

G. Korompay, Archit.

Atel. Obermayer so.

Inventar
Abth. E
Nr. 106

Impr. F. Kargl, Wien.

