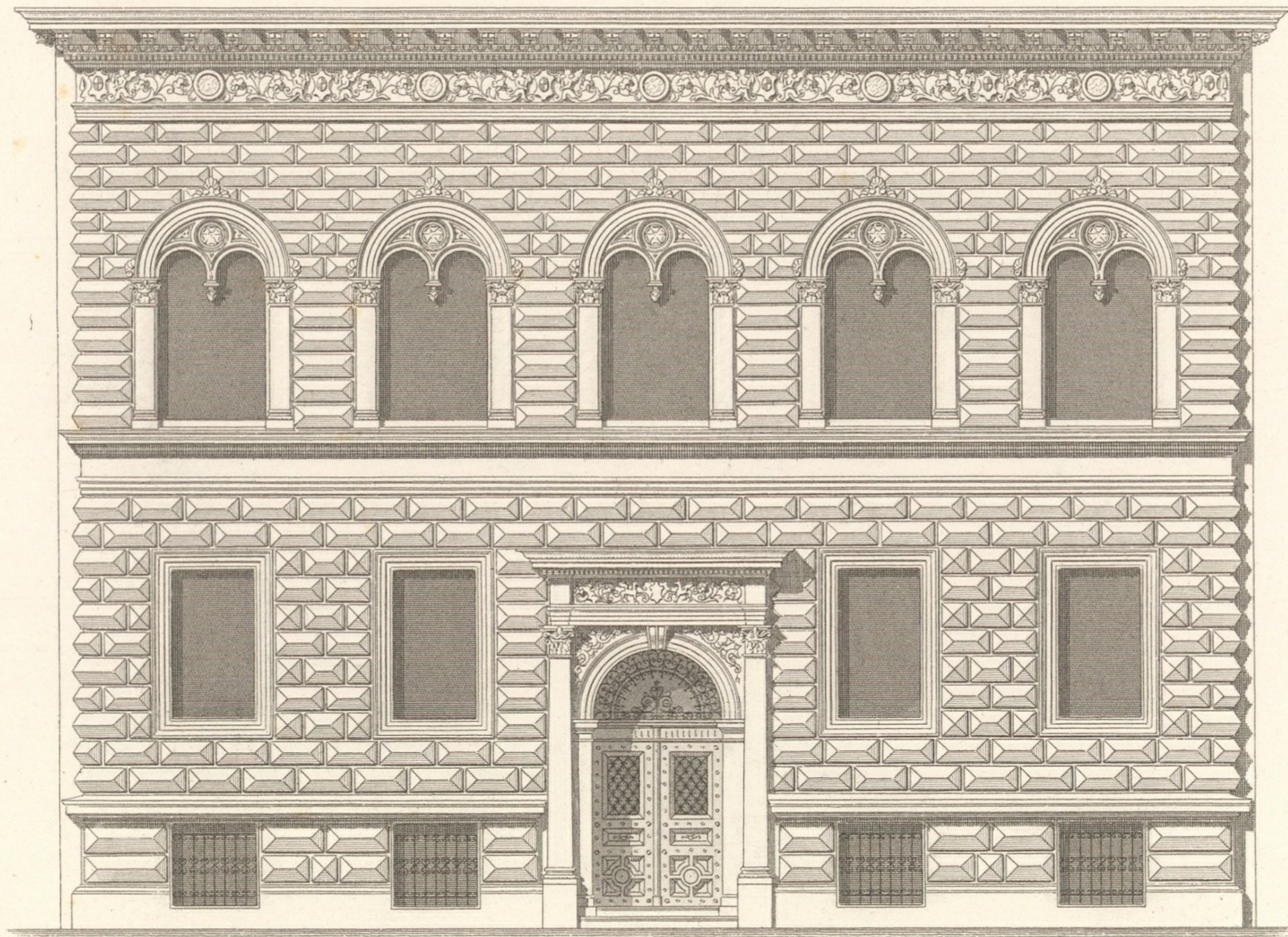
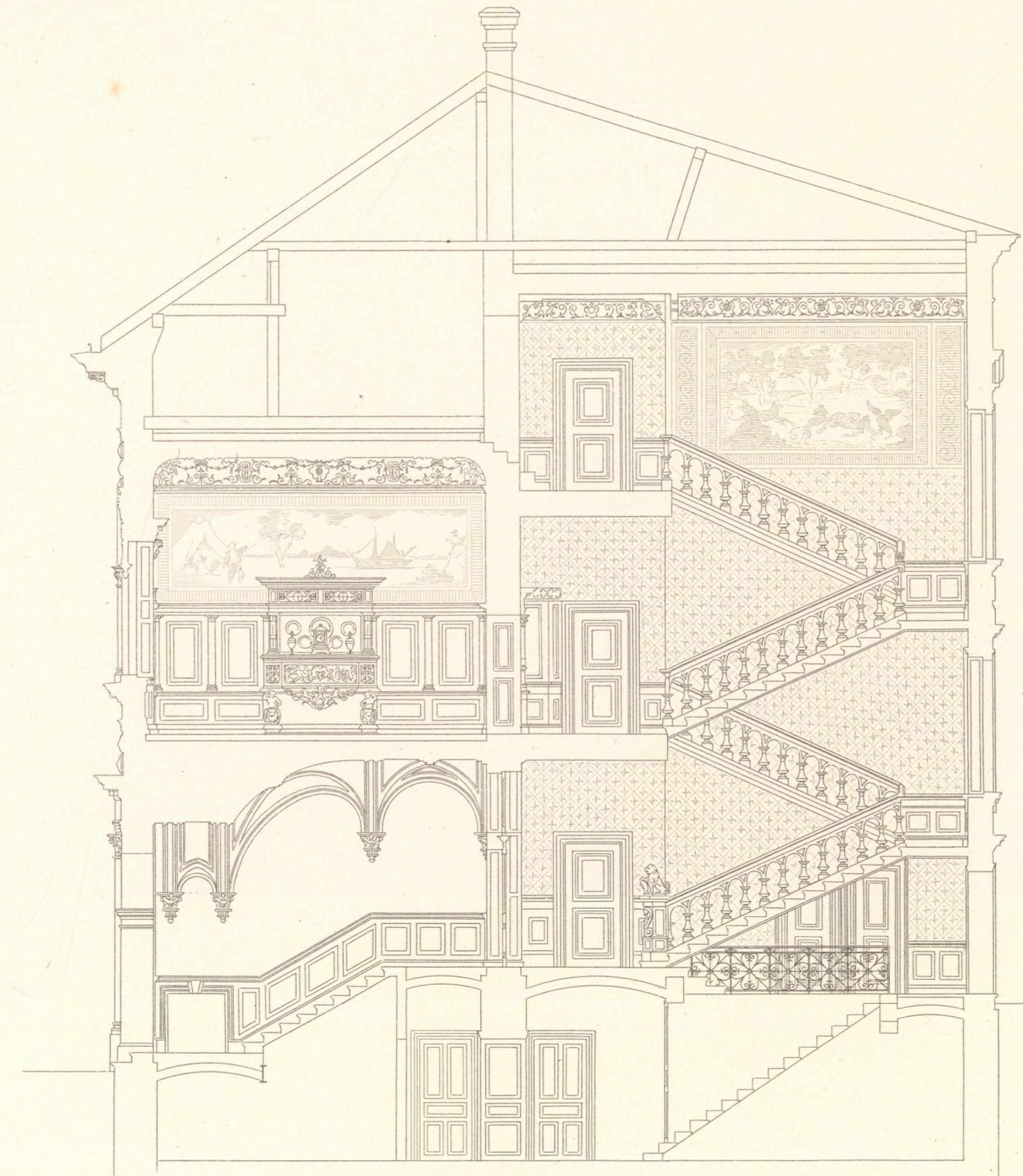
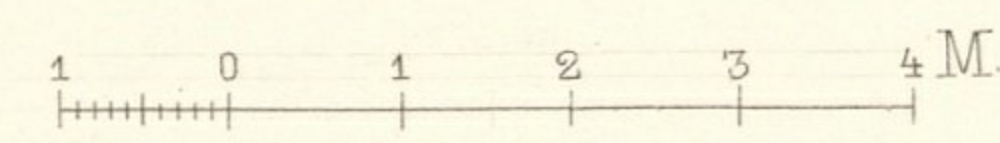


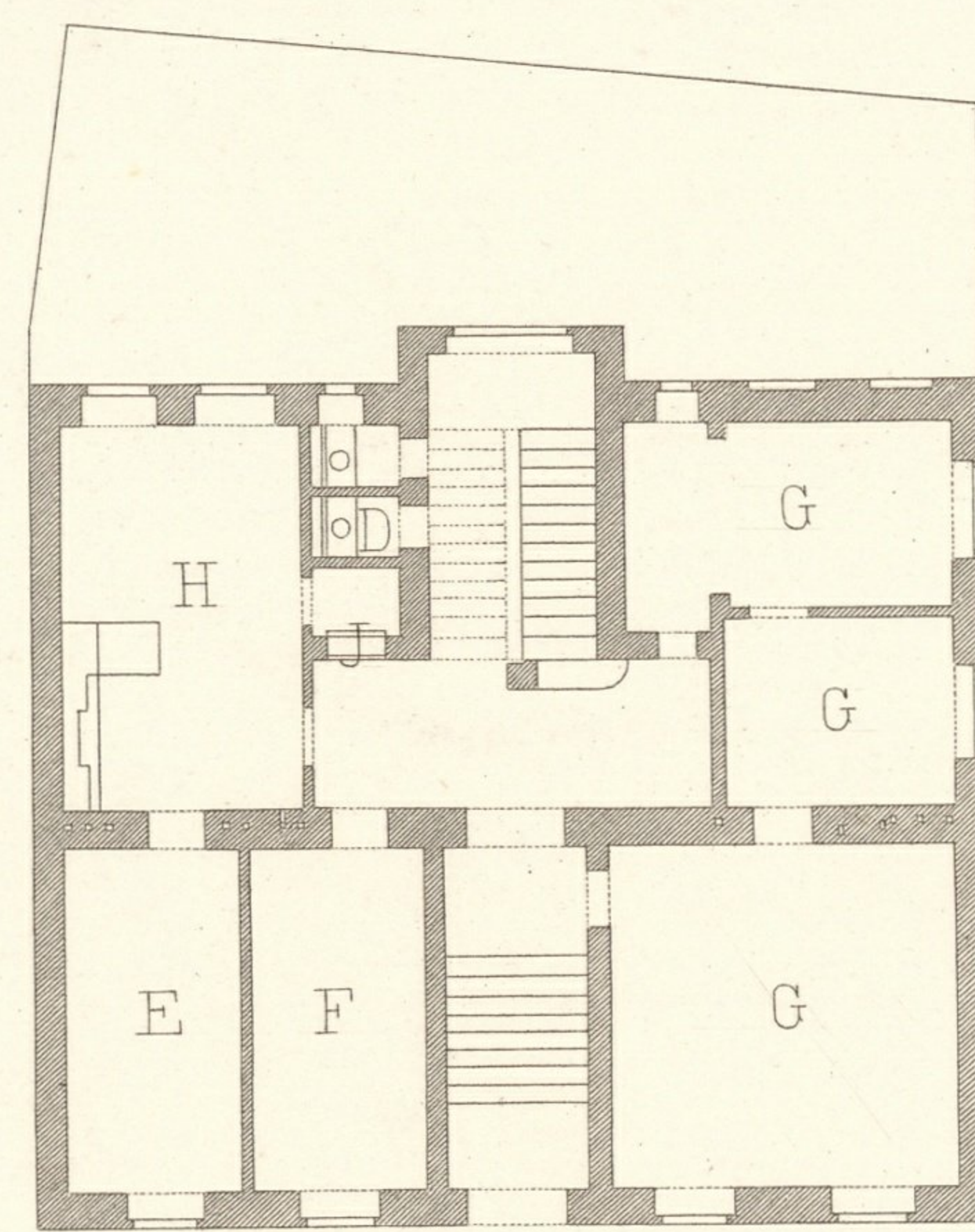
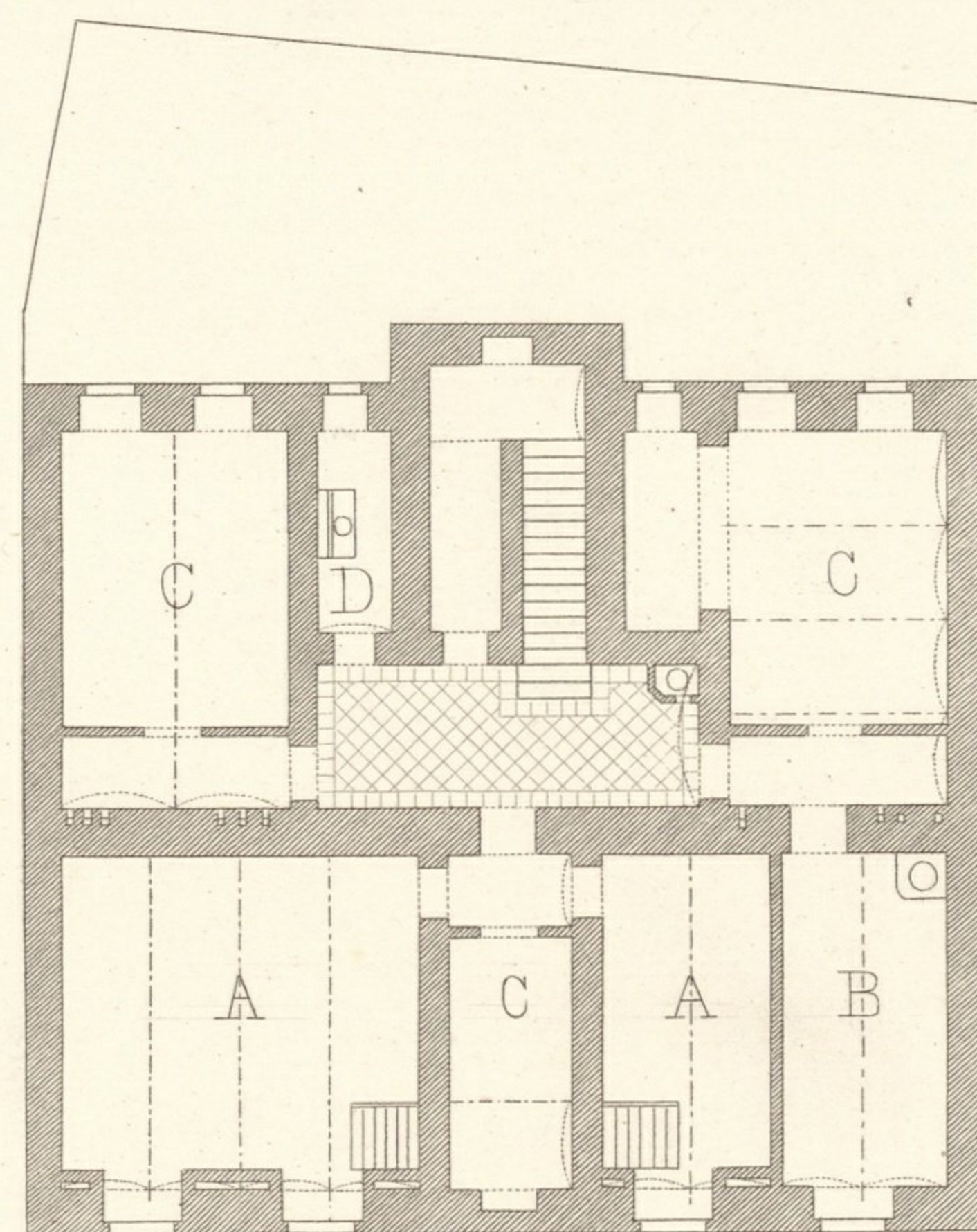
GERLGASSE N° 2<sup>a</sup>



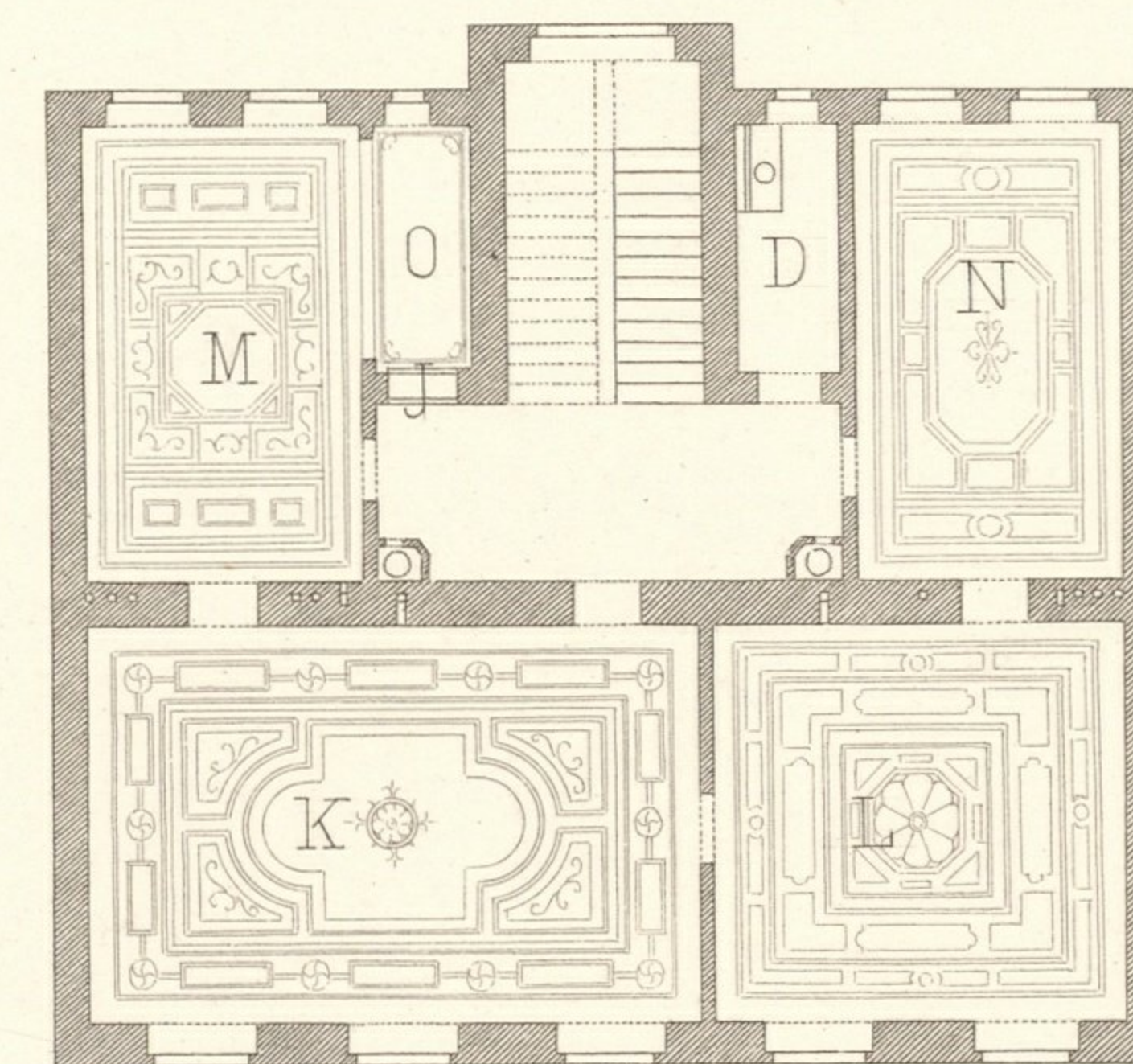
- |                     |                       |
|---------------------|-----------------------|
| A Portier           | A Concierge           |
| B Waschküche        | B Buanderie           |
| C Keller            | C Cave                |
| D Abort             | D Privé               |
| E Dienstbotenzimmer | E Chambre des domest. |
| F Speisekammer      | F Garde manger        |
| G Bureaux           | G Bureaux             |
| H Küche             | H Cuisine             |
| J Aufzug            | J Ascenseur           |
| K Salon             | K Salon               |
| L Wohnzimmer        | L Appartement         |
| M Speisezimmer      | M Salle à manger      |
| N Rauchzimmer       | N Fumoir              |
| O Buffet            | O Buffet              |
| P Dachboden         | P Grenier             |
| Q Kinderzimmer      | Q Chambre des enfants |
| R Toilette          | R Toilette            |
| S Schlafzimmer      | S Chambre à coucher   |



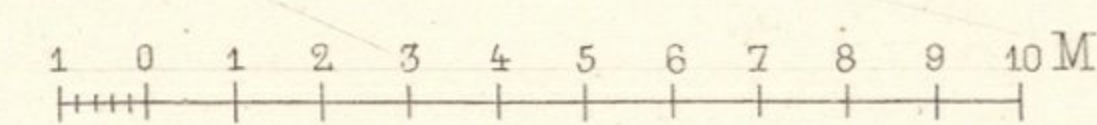
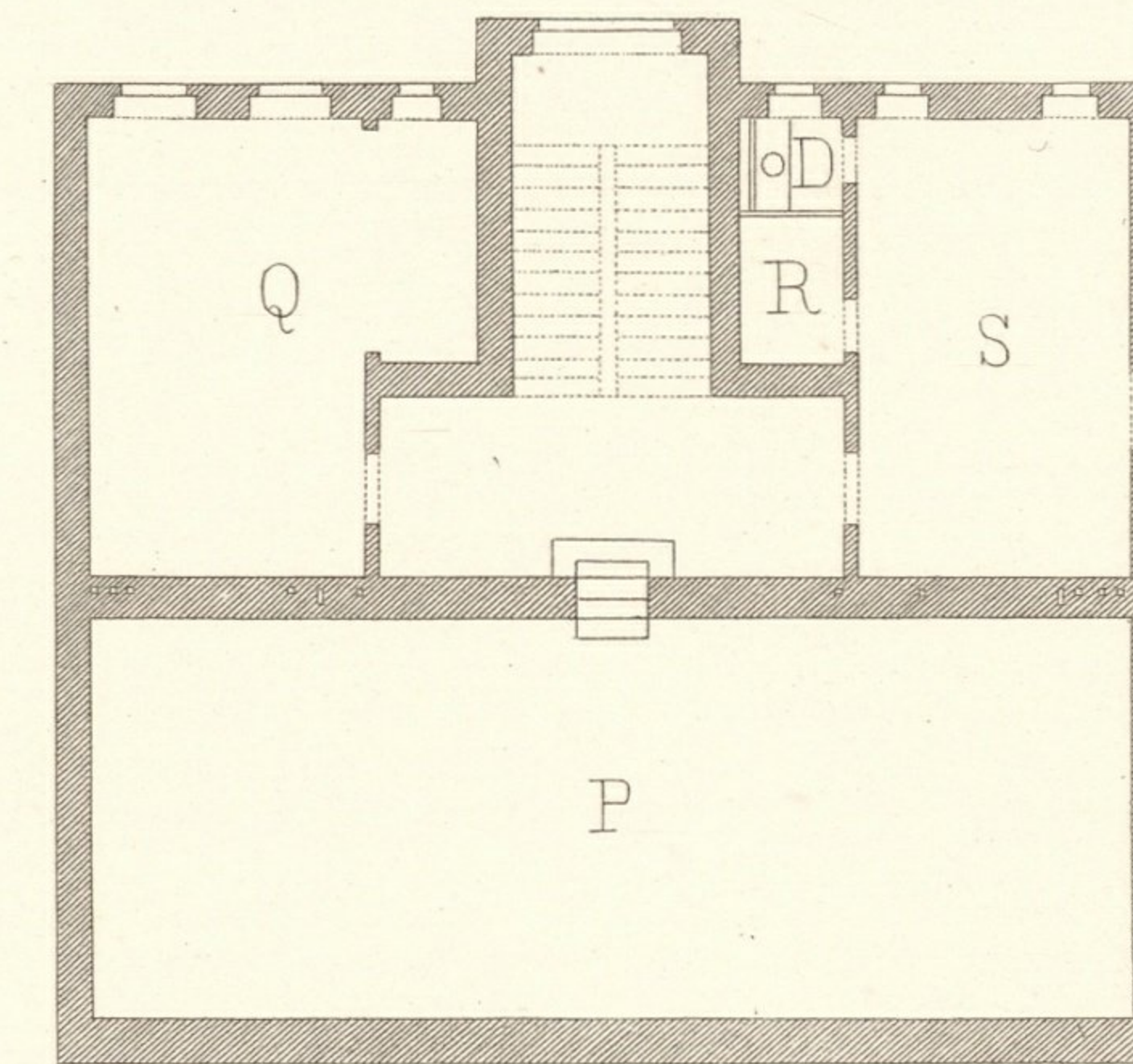
UNTERGESCHOSS. SOUS-SOL. ERDGESCHOSS REZ-DE-CHAUSSÉE



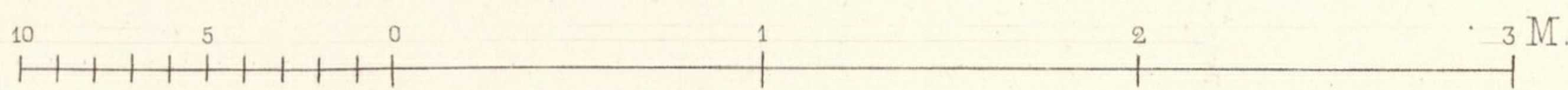
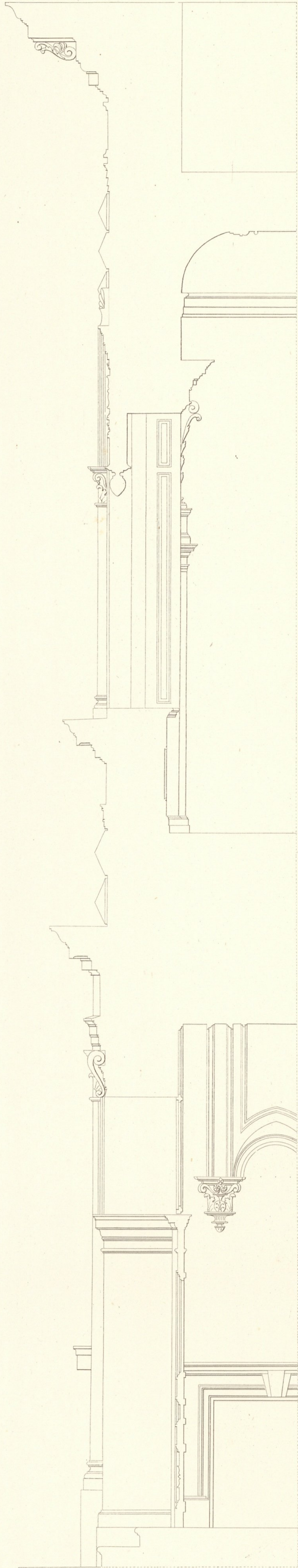
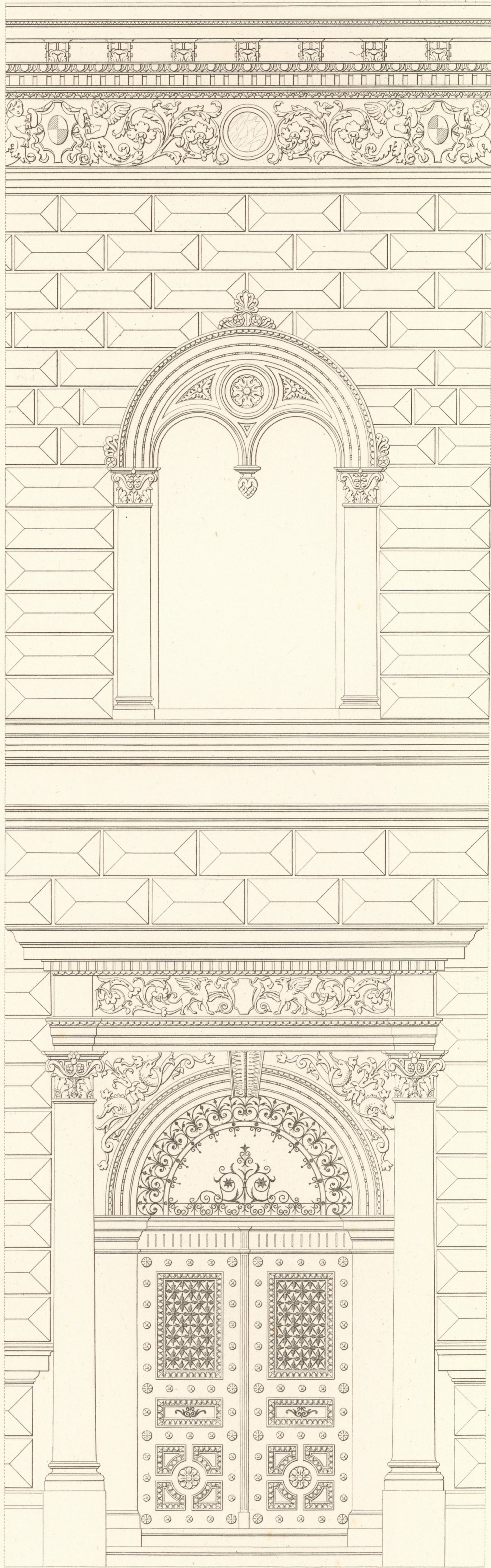
I. STOCK 1<sup>er</sup> ÉTAGE



II. STOCK 2<sup>me</sup> ÉTAGE.



GERLGASSE 2<sup>a</sup>



Wien, Ad. Lehmann.

Hofmeier & Siedek, Archit.

Atel. Obermeyer sc.

Impr. F. Kargl, Wien.