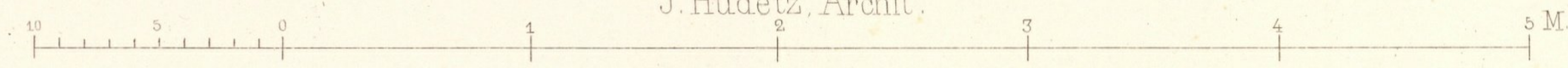


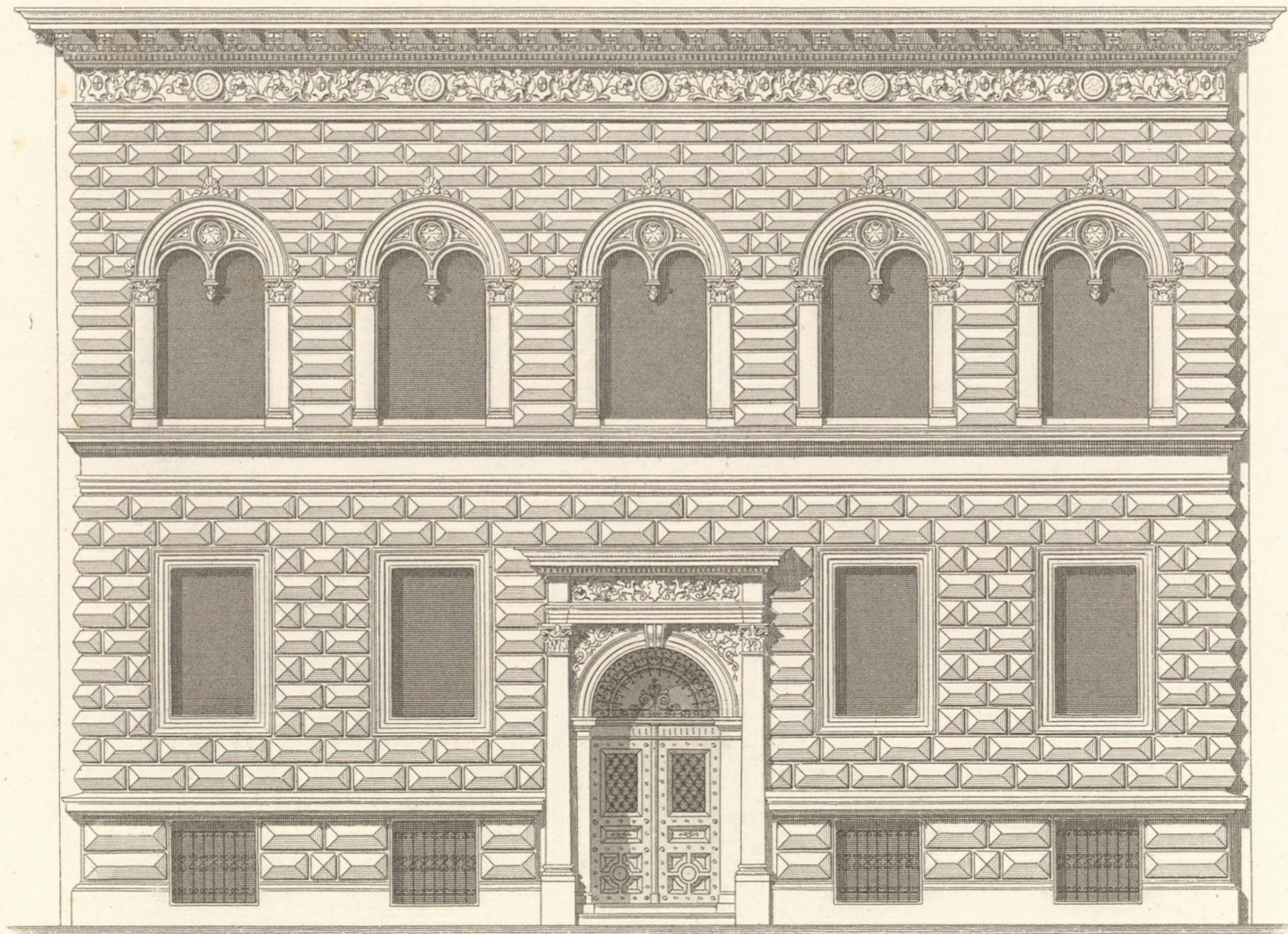
Wien, Ad. Lehmann.

J. Hudetz, Archit.

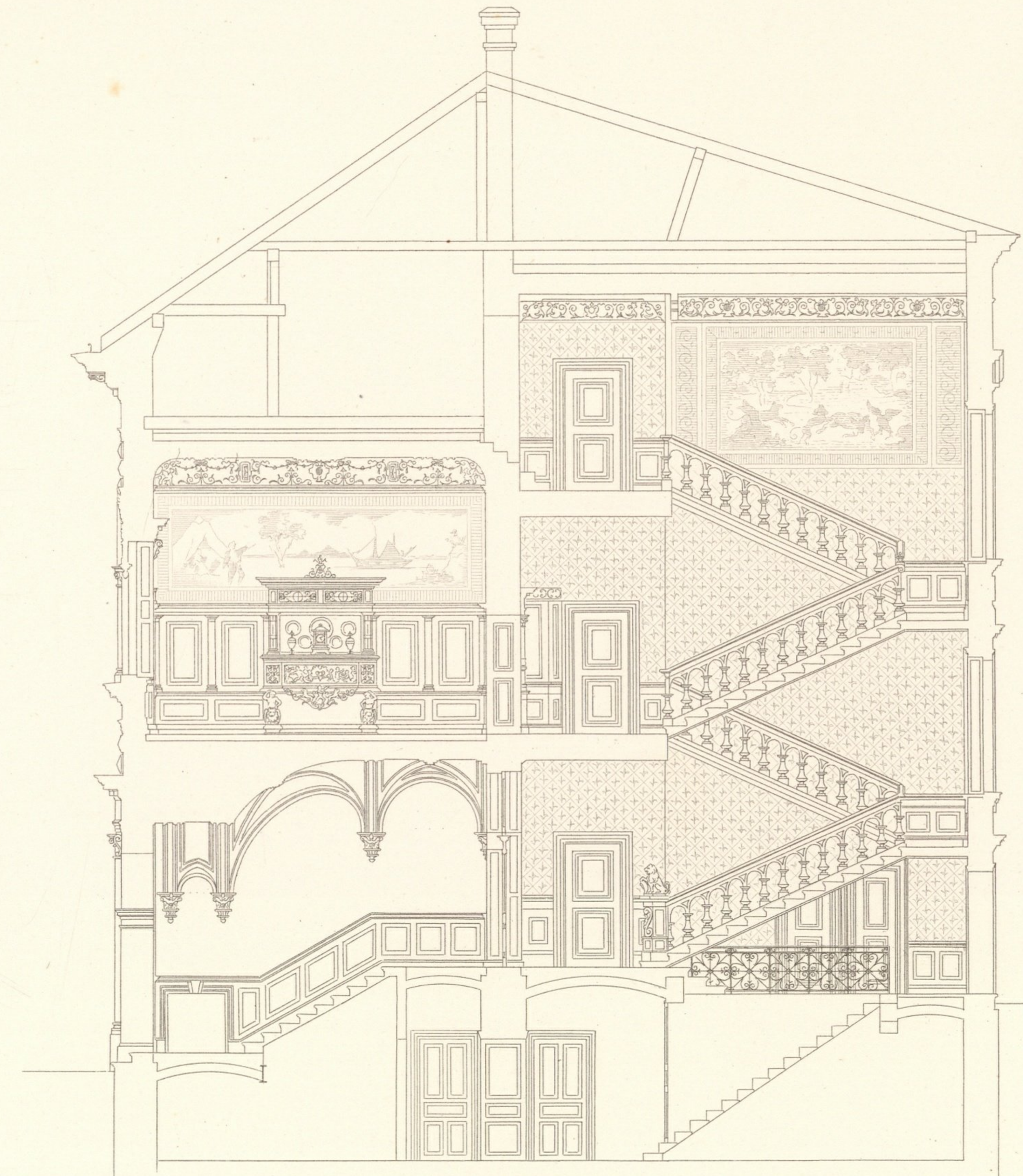
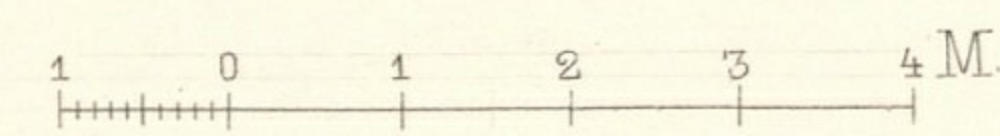
Atel. Obermayer sc.



GERLGASSE N° 2^a



- | | | | |
|---|-------------------|---|---------------------|
| A | Portier | A | Concierge |
| B | Waschküche | B | Buanderie |
| C | Keller | C | Cave |
| D | Abort | D | Privé |
| E | Dienstbotenzimmer | E | Chambre des domest. |
| F | Speisekammer | F | Garde manger |
| G | Bureaux | G | Bureaux |
| H | Küche | H | Cuisine |
| J | Aufzug | J | Ascenseur |
| K | Salon | K | Salon |
| L | Wohnzimmer | L | Appartement |
| M | Speisezimmer | M | Salle à manger |
| N | Rauchzimmer | N | Fumoir |
| O | Buffet | O | Buffet |
| P | Dachboden | P | Grenier |
| Q | Kinderzimmer | Q | Chambre des enfants |
| R | Toilette | R | Toilette |
| S | Schlafzimmer | S | Chambre à coucher |



UNTERGESCHOSS. SOUS-SOL. ERDGESCHOSS REZ-DE-CHAUSSÉE

