

MAXIMILIAN PLATZ N° 7.



10 5 0 1 2 3 4 5 6 7 8 9 10 Mur

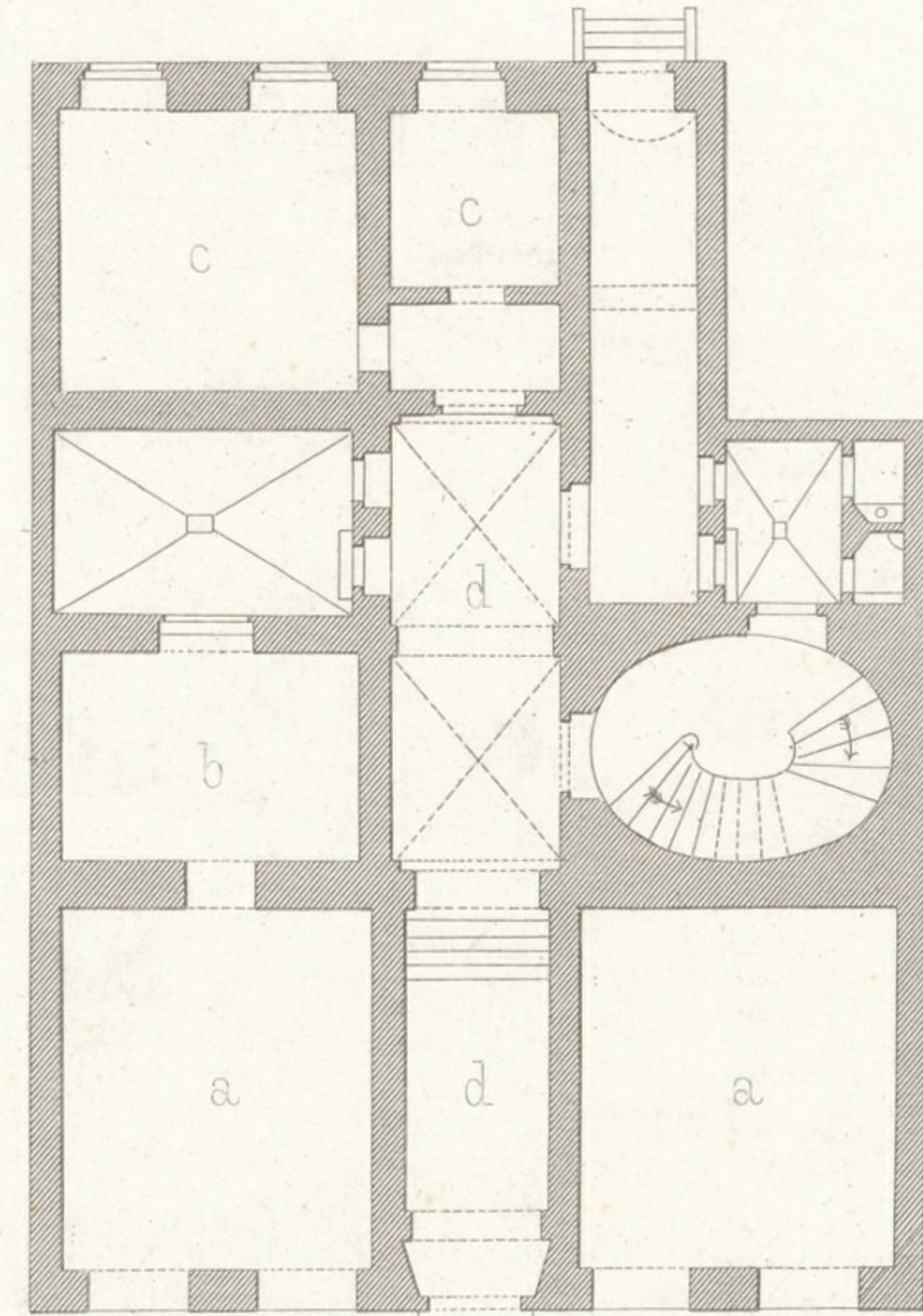
Wien, Lehmann u. Wentzel.

v. Ferstel, Archit.

Atelier Obermayer, Zimmermann.

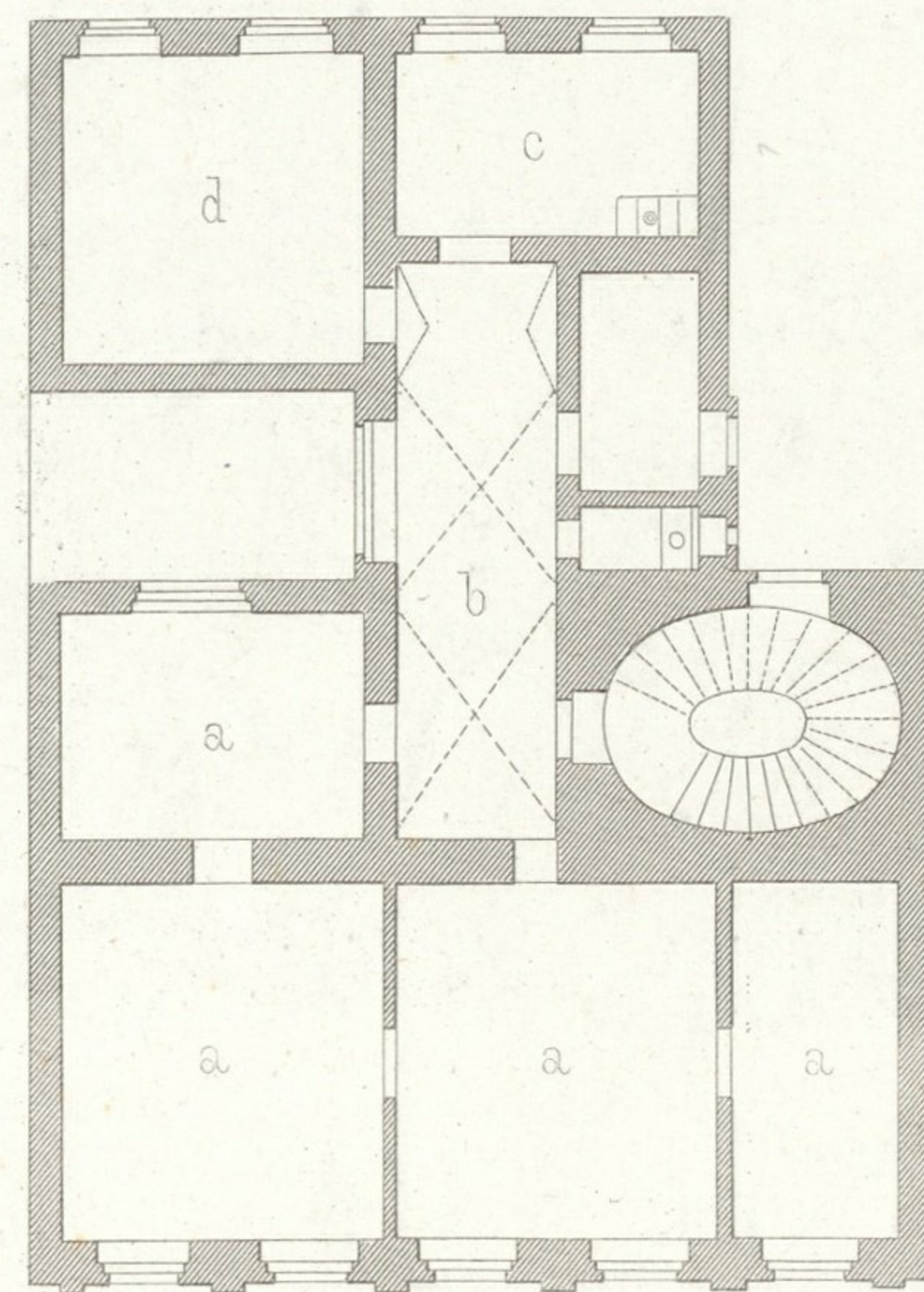
Imp. Wetteroth, München.

A. ERDGESCHOSS - REZ-DE-CHAUSÉE



- | | |
|-------------------------|-----------------------|
| a Verkaufsgewölbe | Magasins |
| b Magazin | Dépôt de marchandises |
| c Kirchendiener Wohnung | Loge du Suisse |
| d Vestibule | Vestibule |

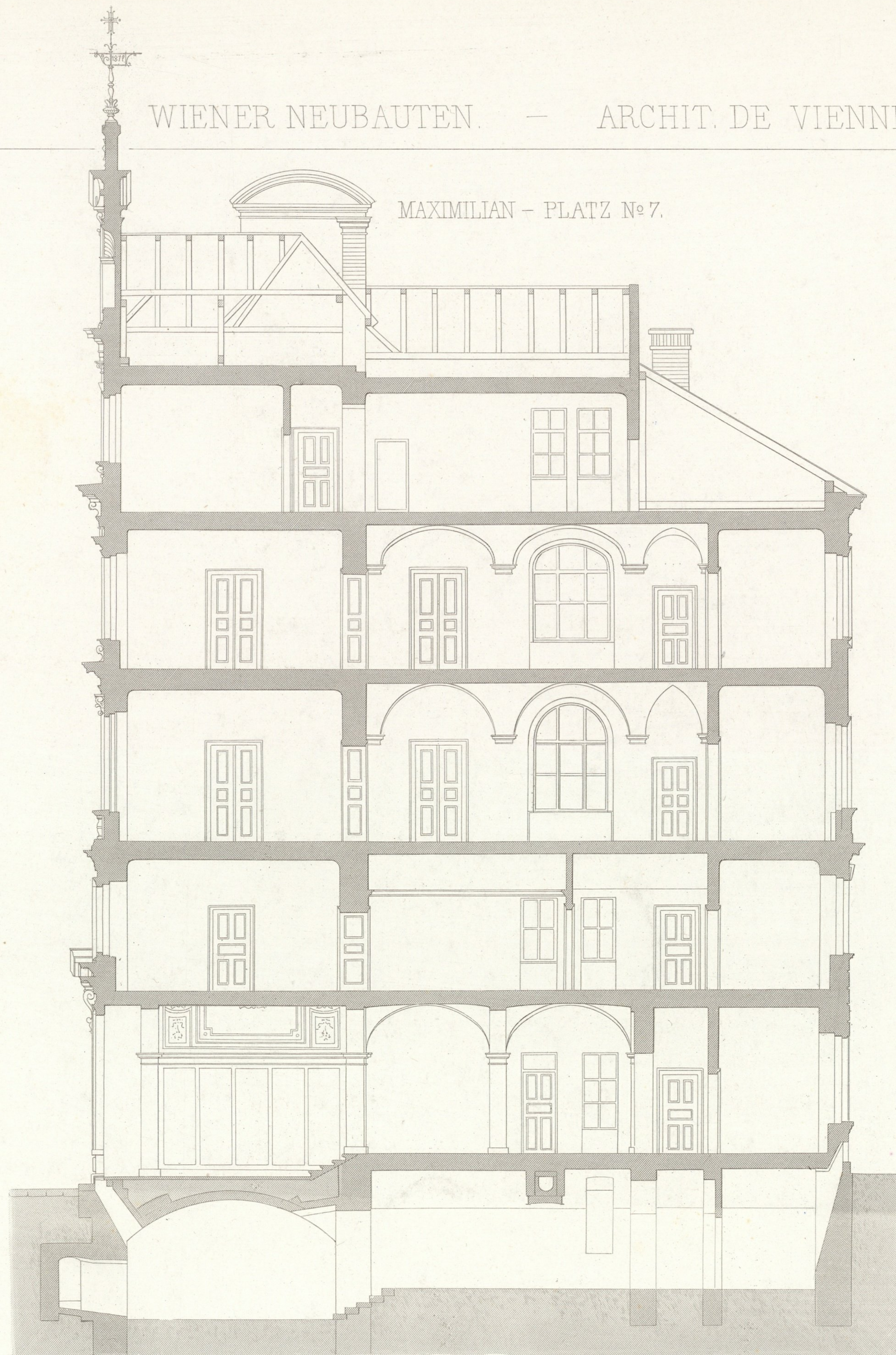
C. I. STOCK - I. ETAGE



- | | |
|---------------------------|-----------------------|
| a Wohnzimmer des Pfarrers | Appartement du curé |
| b Vorzimmer | Antichambre |
| c Küche | Cuisine |
| d Dienstbotenzimmer | Chamb. de domestiques |

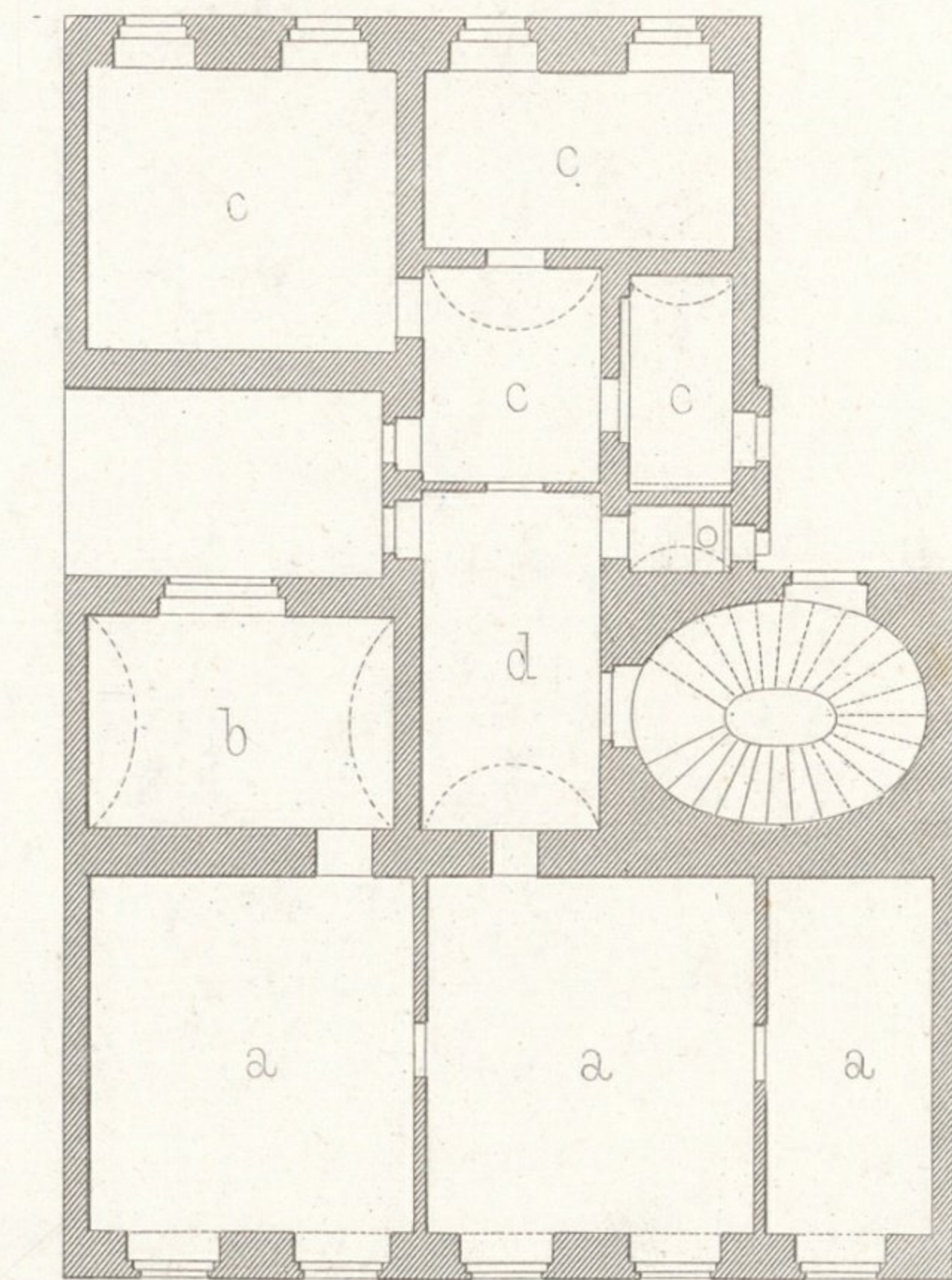
Wien, Lehmann u. Wentzel.

MAXIMILIAN - PLATZ N° 7.



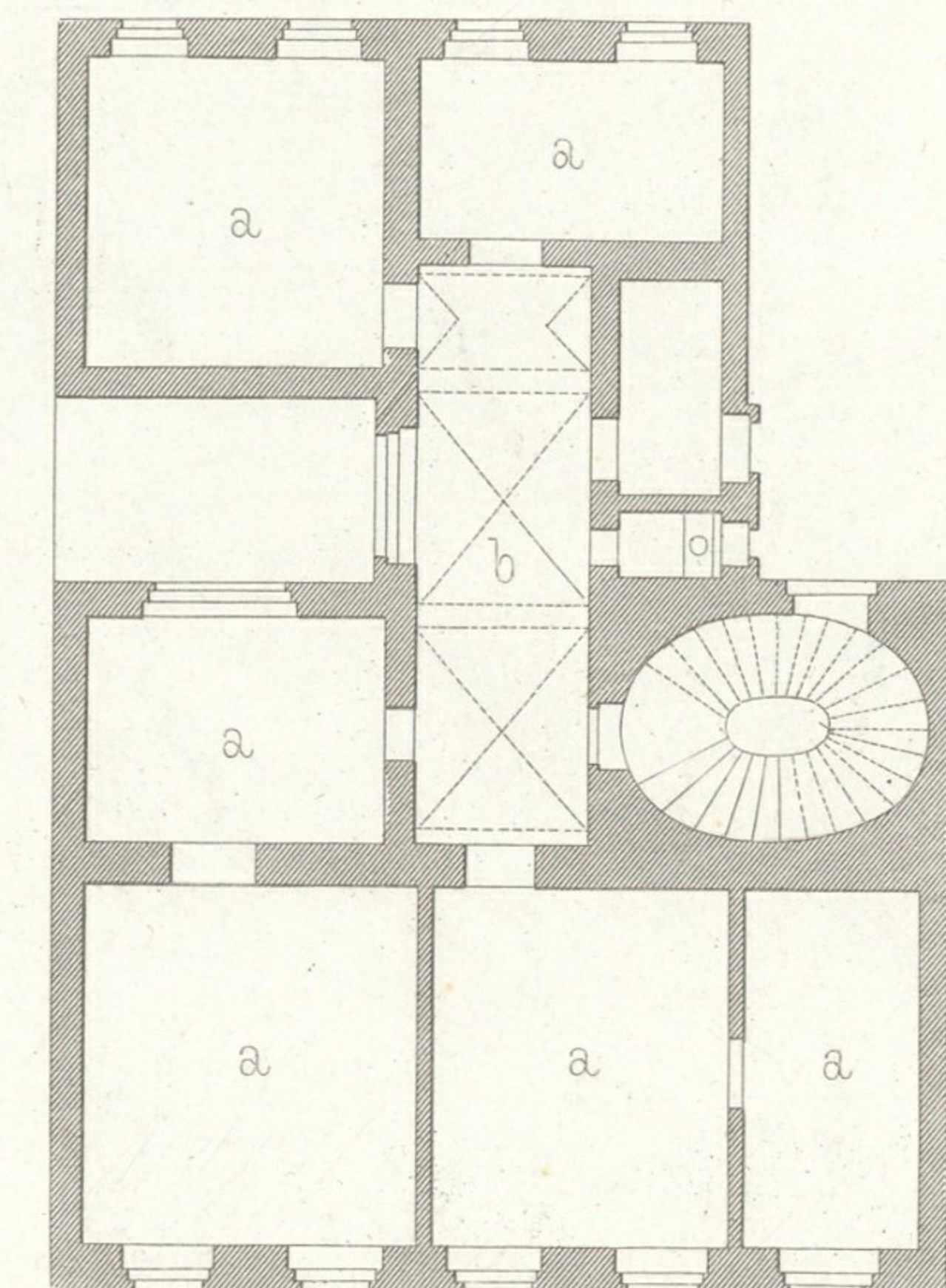
v. Ferstel, Archit.

B. MEZZANIN - ENTRESOL



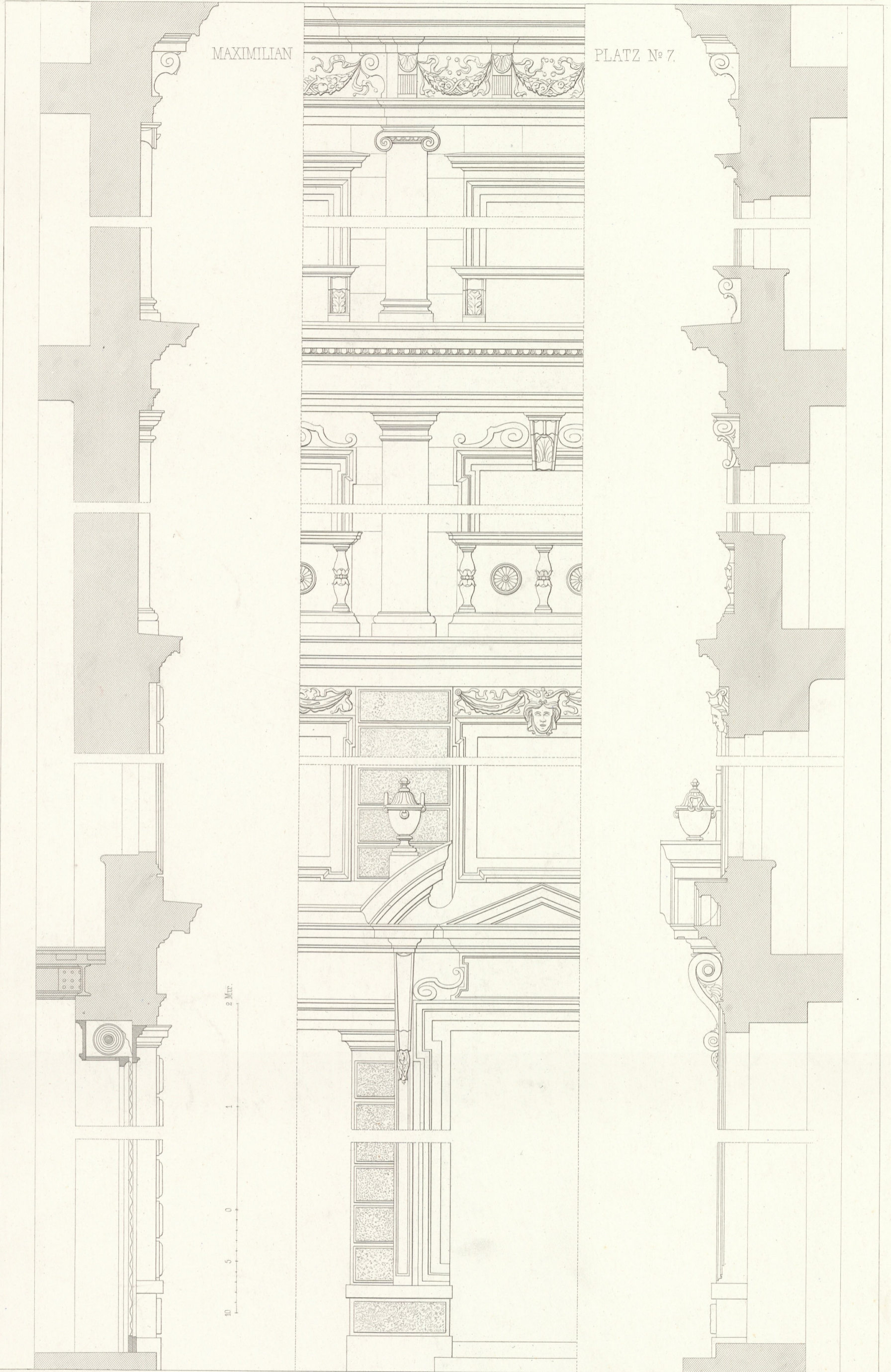
- | | |
|-------------------|------------------------|
| a Pfarrkanzleien | Bureau de curé |
| b Archiv | Archives |
| c Messner Wohnung | Logement du sacristain |
| d Vorzimmer | Antichambre |

D. II. STOCK - II. ETAGE



- | | |
|------------------------|---------------------------|
| a Cooperatoren Wohnung | Appartements des vicaires |
| b Vorzimmer | Antichambre |

Atelier Obermayer, Zimmermann.



Wien, Lehmann u. Wentzel.

v. Ferstel, Archit.

Atelier Obermayer, Zimmermann.

II.

MAXIMILIAN - PLATZ N° 7.



Wien, Lehmann u. Wentzel.

v. Ferstel; Archit.

Atelier Obermayer, Zimmermann.

Imp. Wetteroth, München.