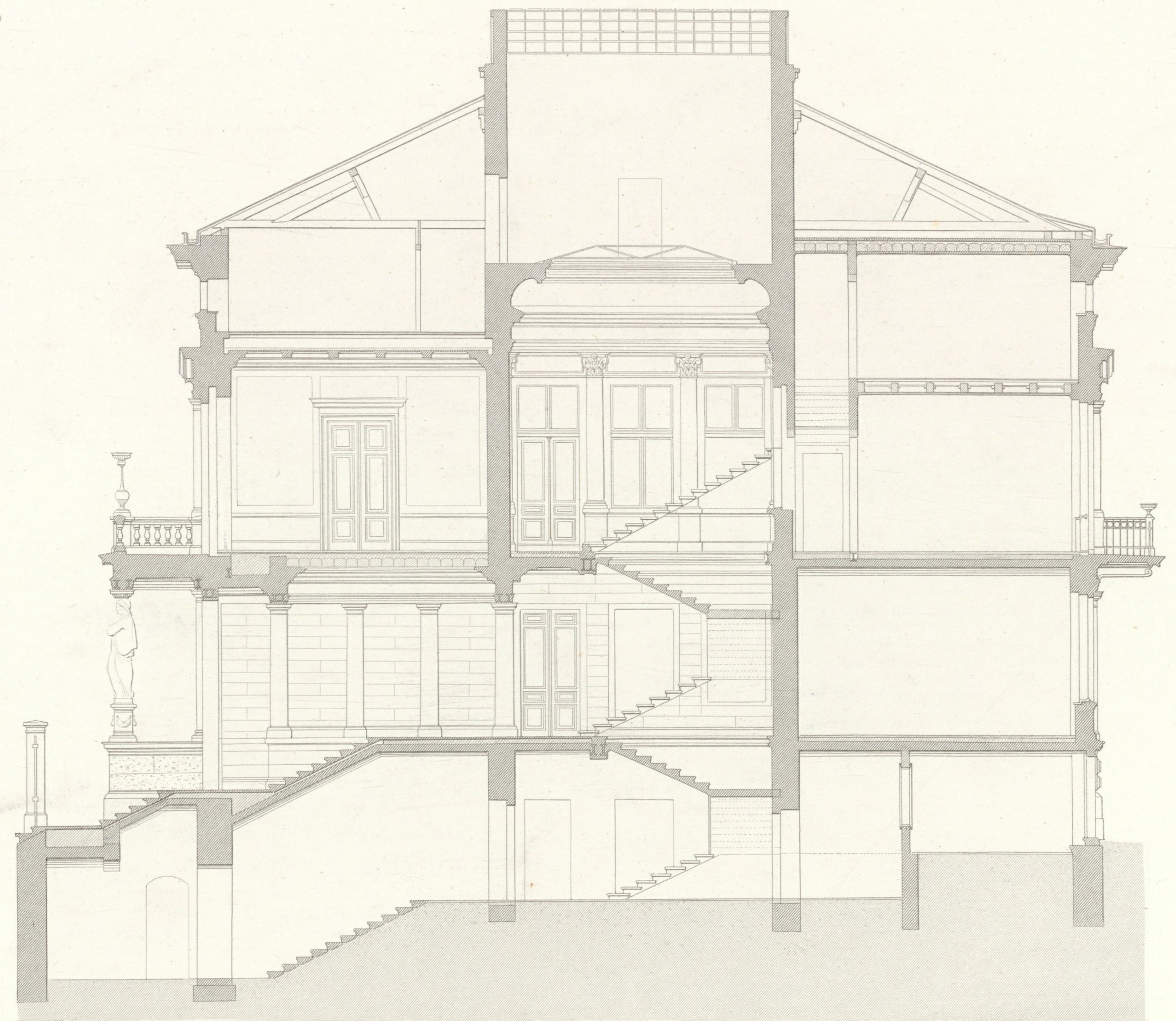
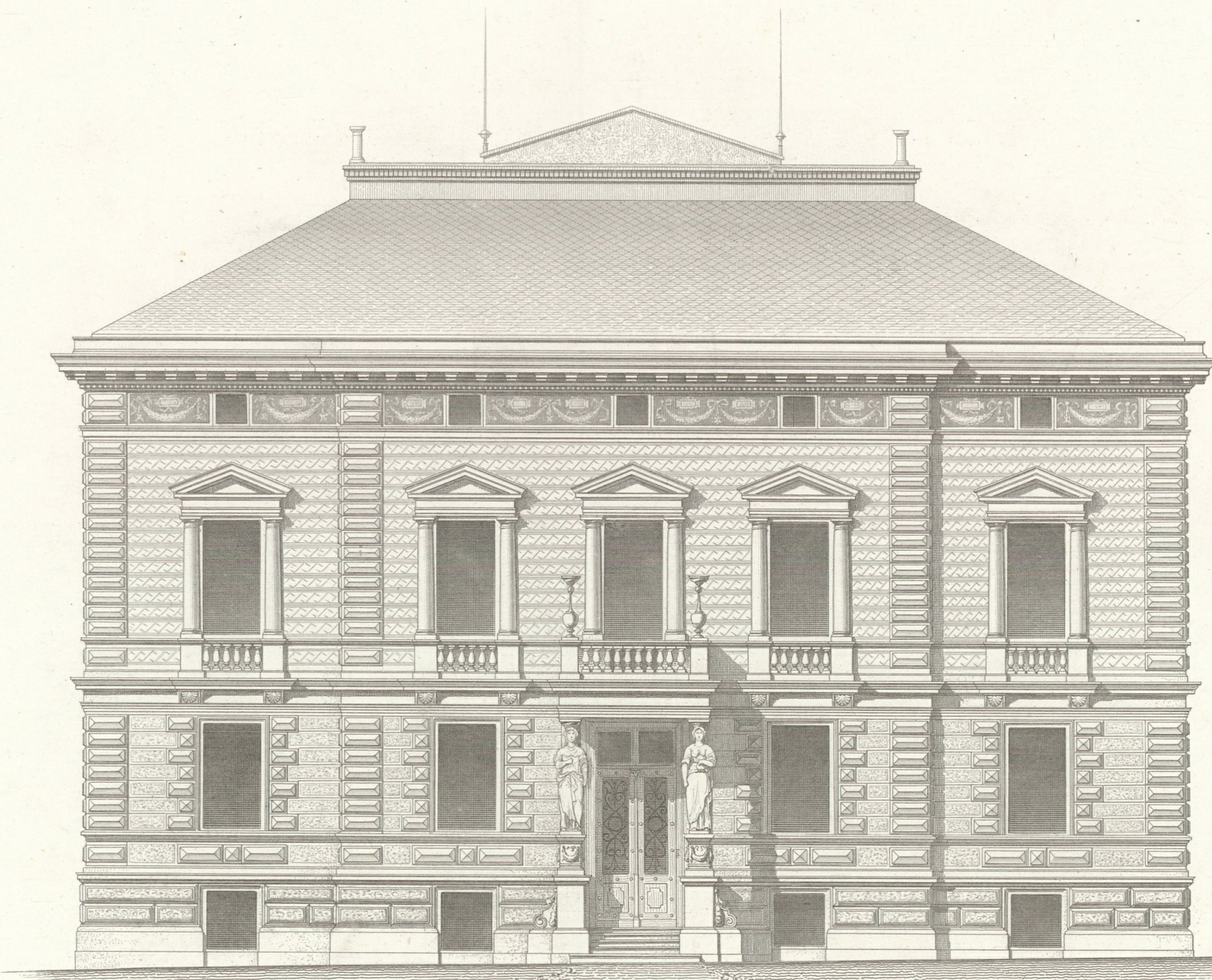


OBER-DÖBLING, HERMANNSSTRASSE N°7.



10 5 0 1 2 3 4 5 6 7 8 9 10 Mr.

Wien, Lehmann u. Wentzel.

Claus u. Grofs, Archit.

Atelier Obermayer, Zimmermann.

Imp. Weuroth, München.



OBER DÖBLING, HERMANNSTRASSE N°7.

A UNTERGESCHOSS

- a Vorzimmer
- b Badezimmer
- c Dienstbotenzimmer
- d Küche
- ef Waschküche u. Bügelzimmer
- g Keller
- h Hausmeister

B ERDGESCHOSS

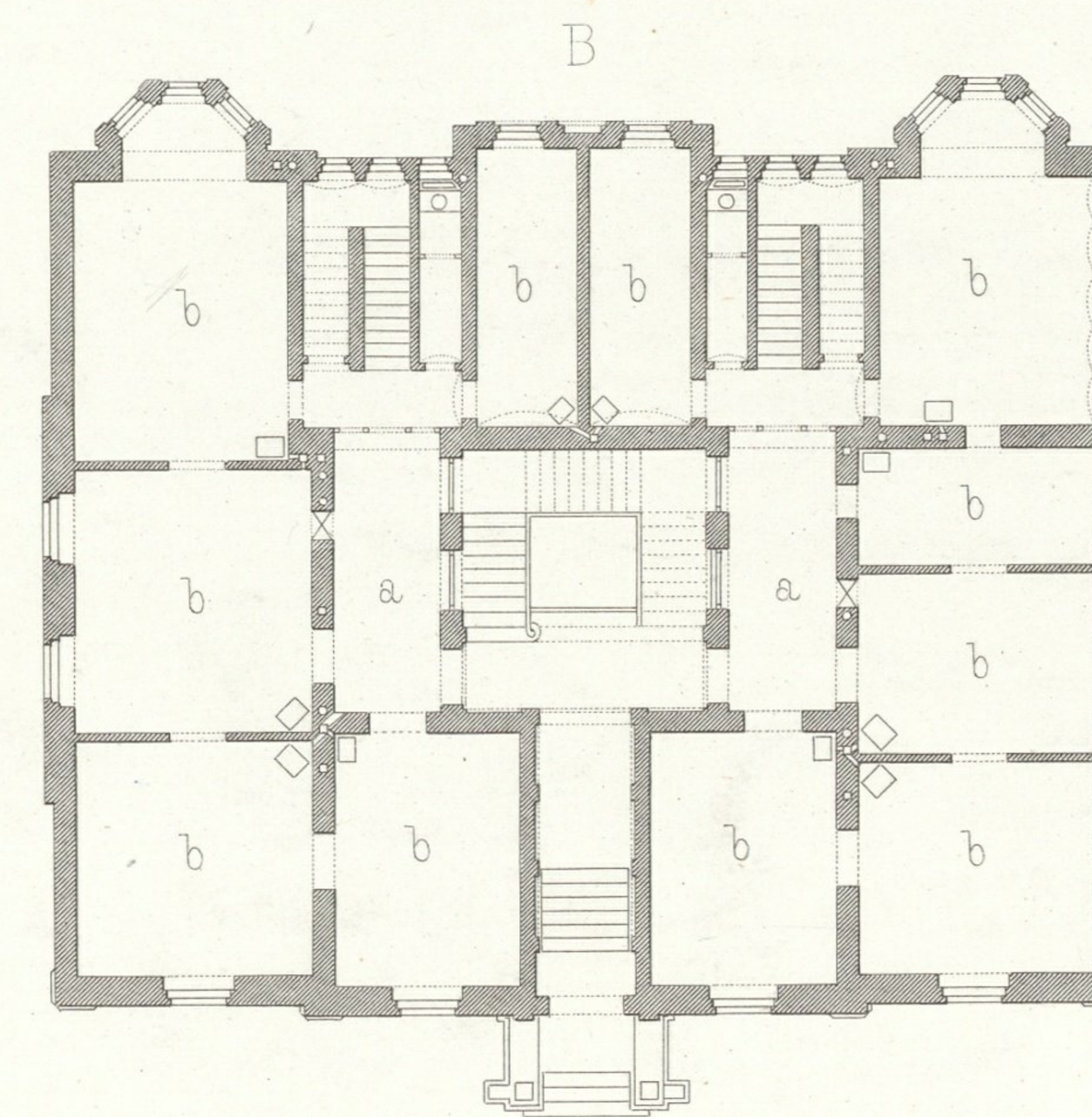
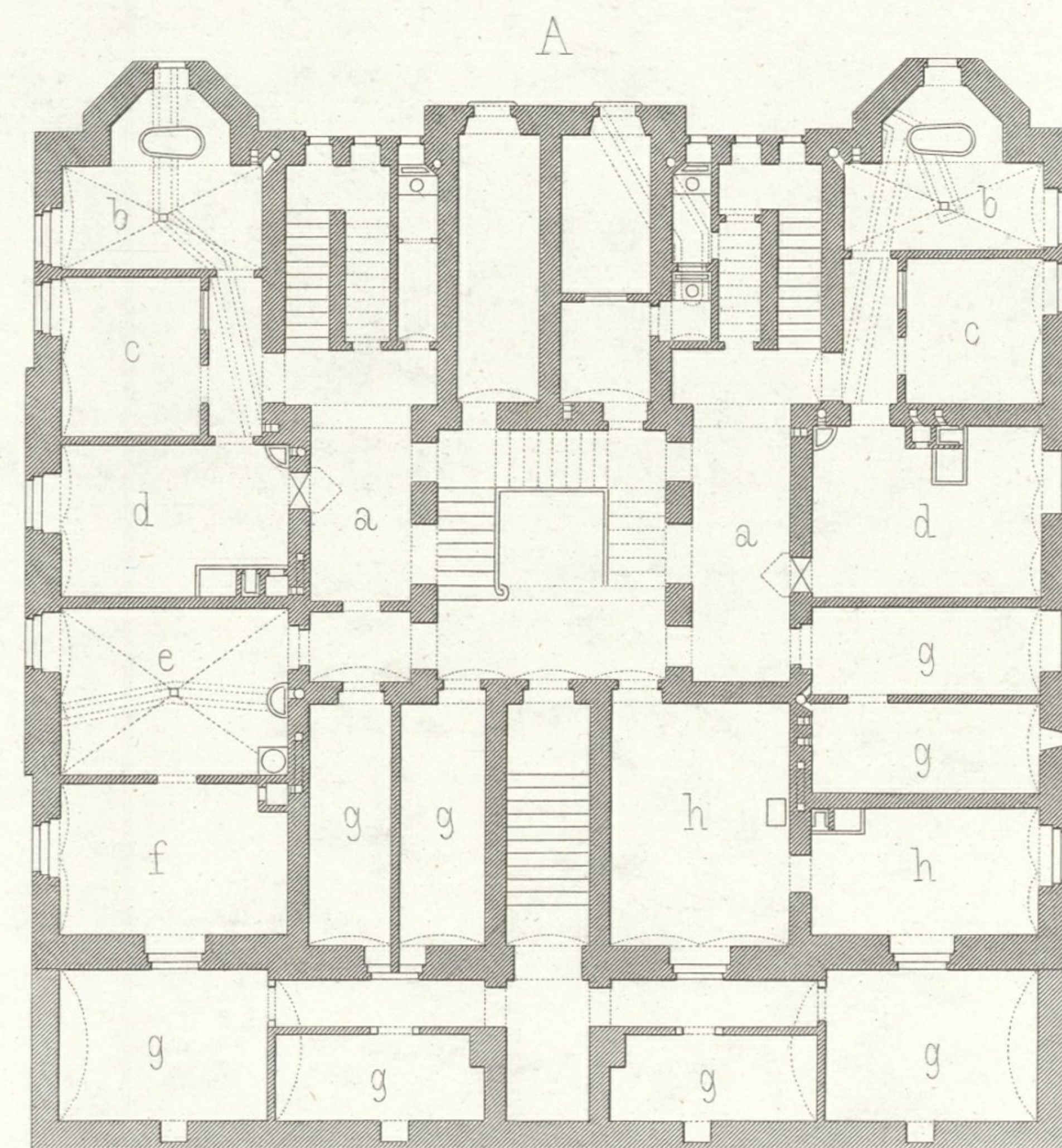
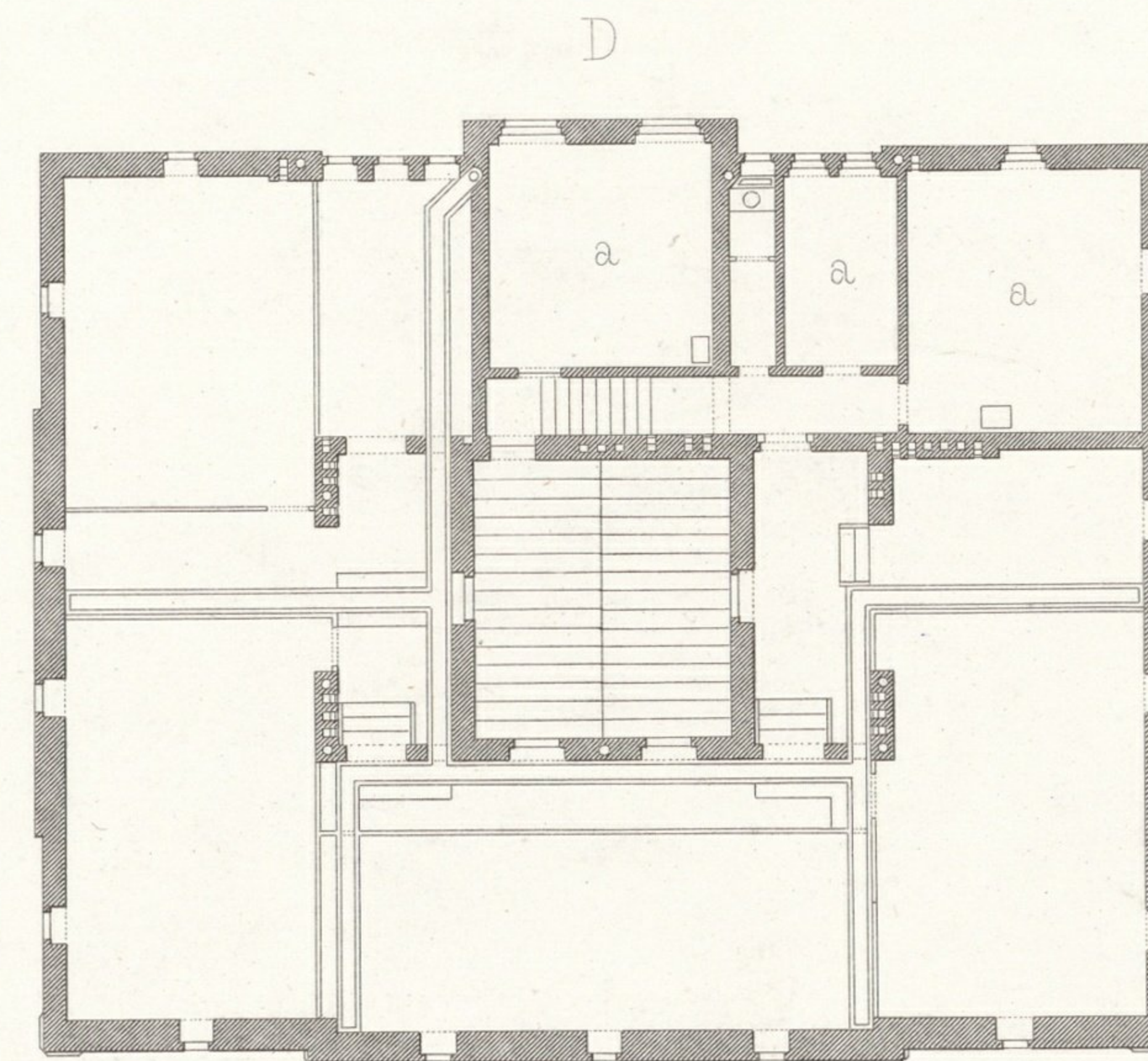
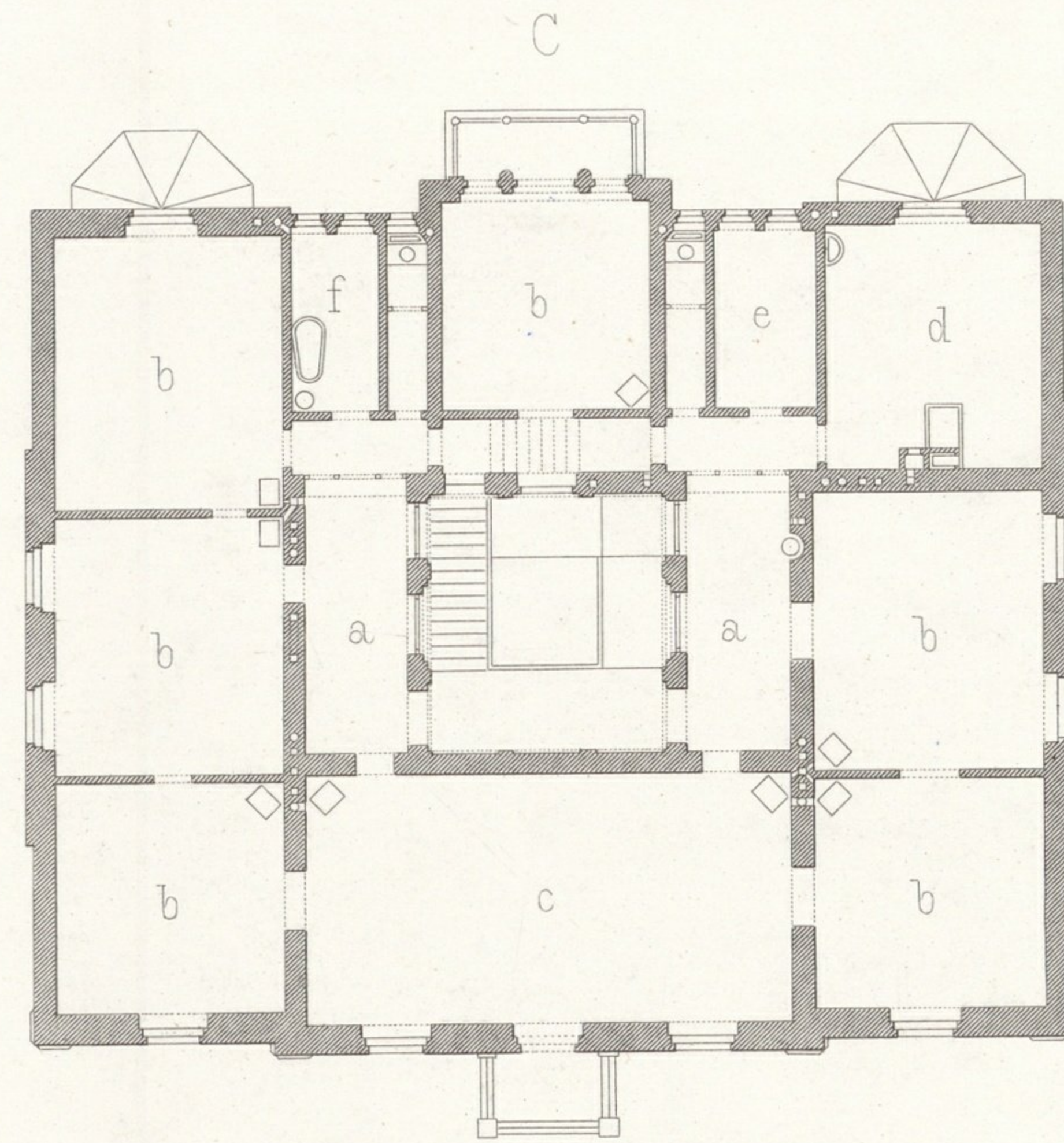
- a Vorzimmer
- b Zimmer

C I STOCK

- a Vorzimmer
- b Zimmer
- c Salon
- d Küche
- e Speisezimmer
- f Bad

D DACHSTOCK

- a Dienstbotenzimmer



A SOUS SOL

- a Antichambres
- b Bains
- c Chamb. des Domestiques
- d Cuisines
- ef Buanderies
- g Caves
- h Suifse

B REZ-DE-CHAUSSEE

- a Antichambres
- b Appartements

C I ETAGE

- a Antichambres
- b Appartements
- c Salon
- d Cuisine
- e Garde manger
- f Bains

D MANSARDE

- a Chamb. des Domestiques

10 0 1 2 3 4 5 6 7 8 9 10 11 12 Meter