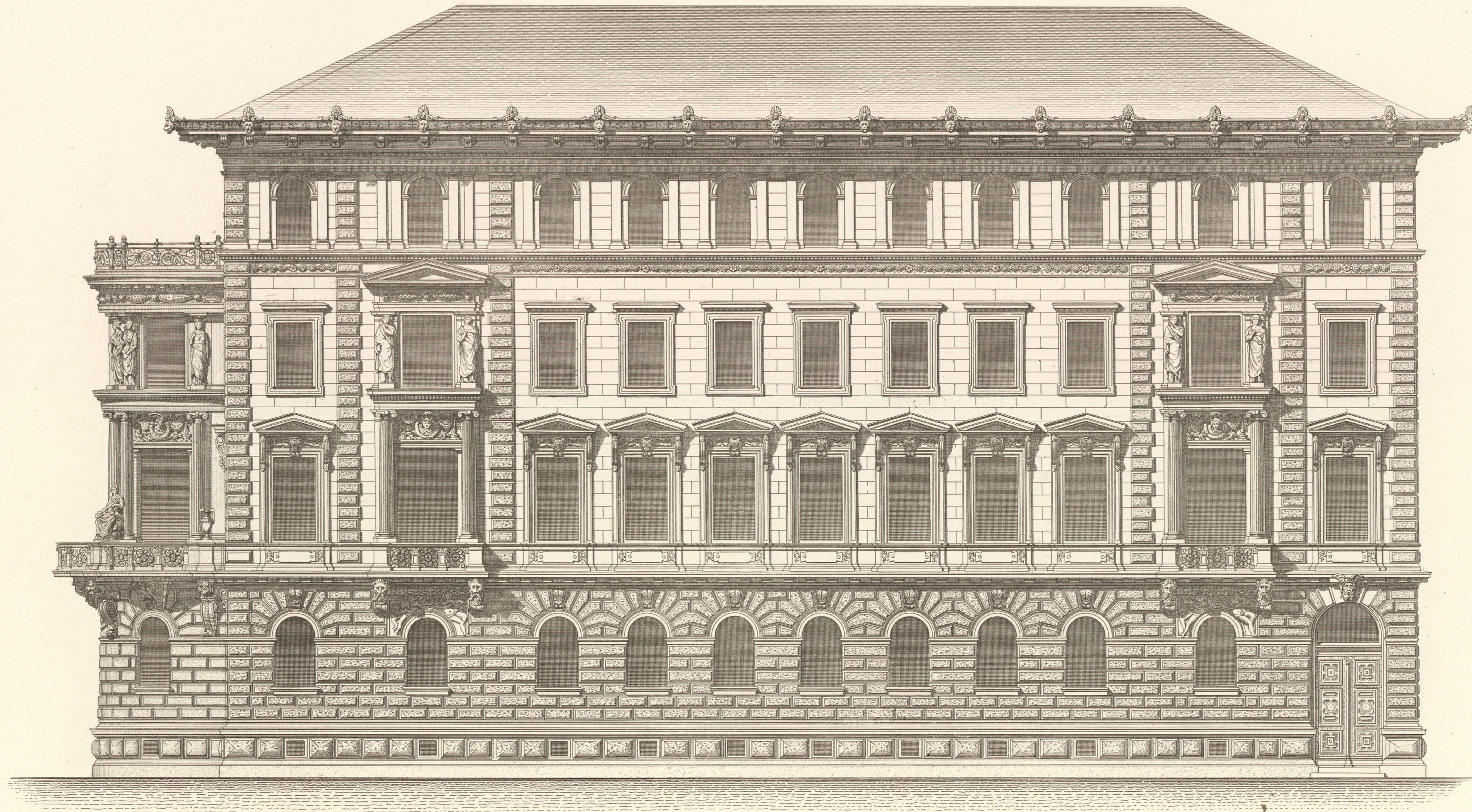


GUSSHAUSSTRASSE N° 10.



10 5 0 1 2 3 4 5 6 7 8 9 10 Met.

Wien, Lehmann u. Wentzel.

Wendeler u. Hieser, Archit.

Atelier Obermayer, Zimmermann.

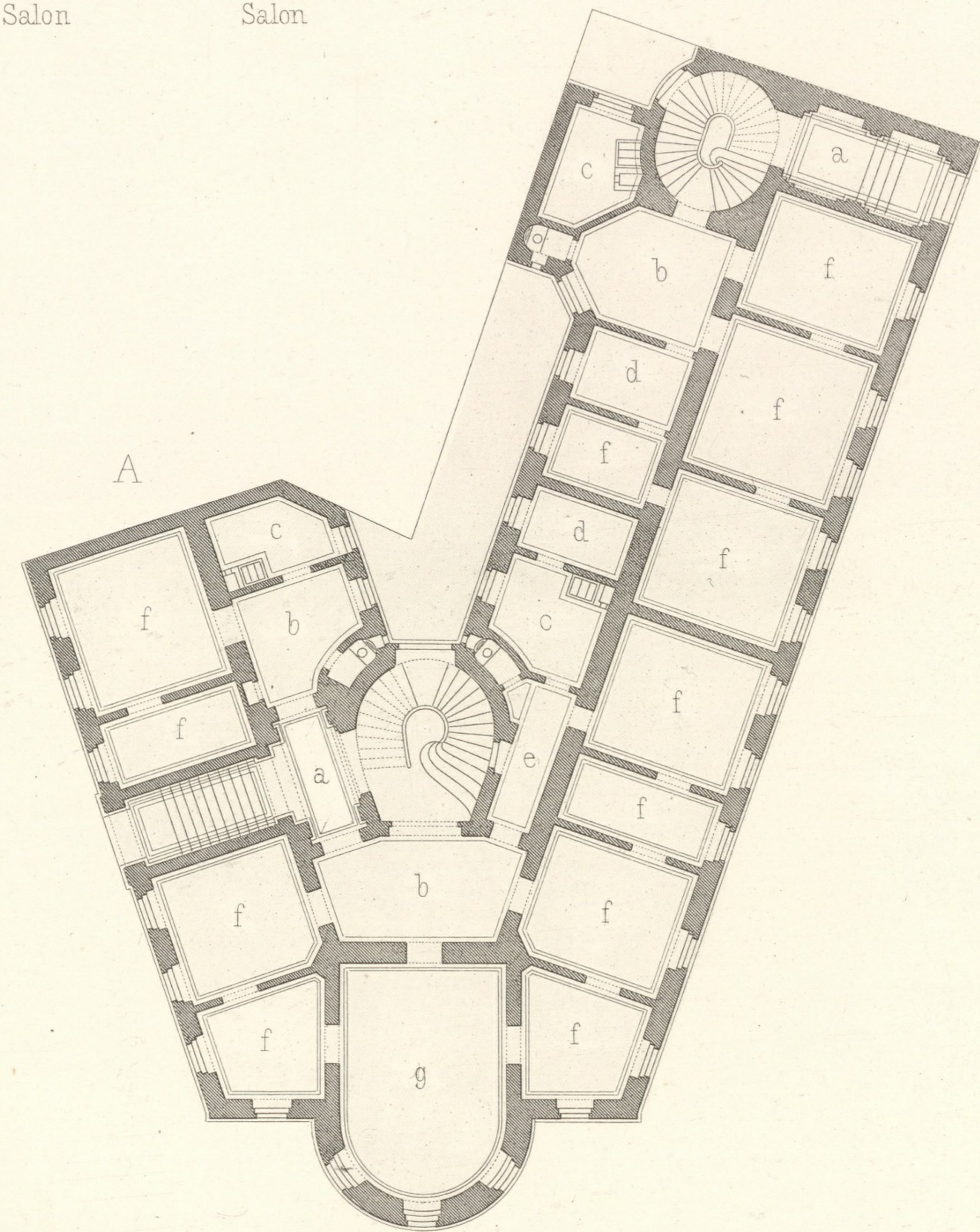
Inventar
Abth. E
Nr. 798

Impr. F. Kargl, Wien.

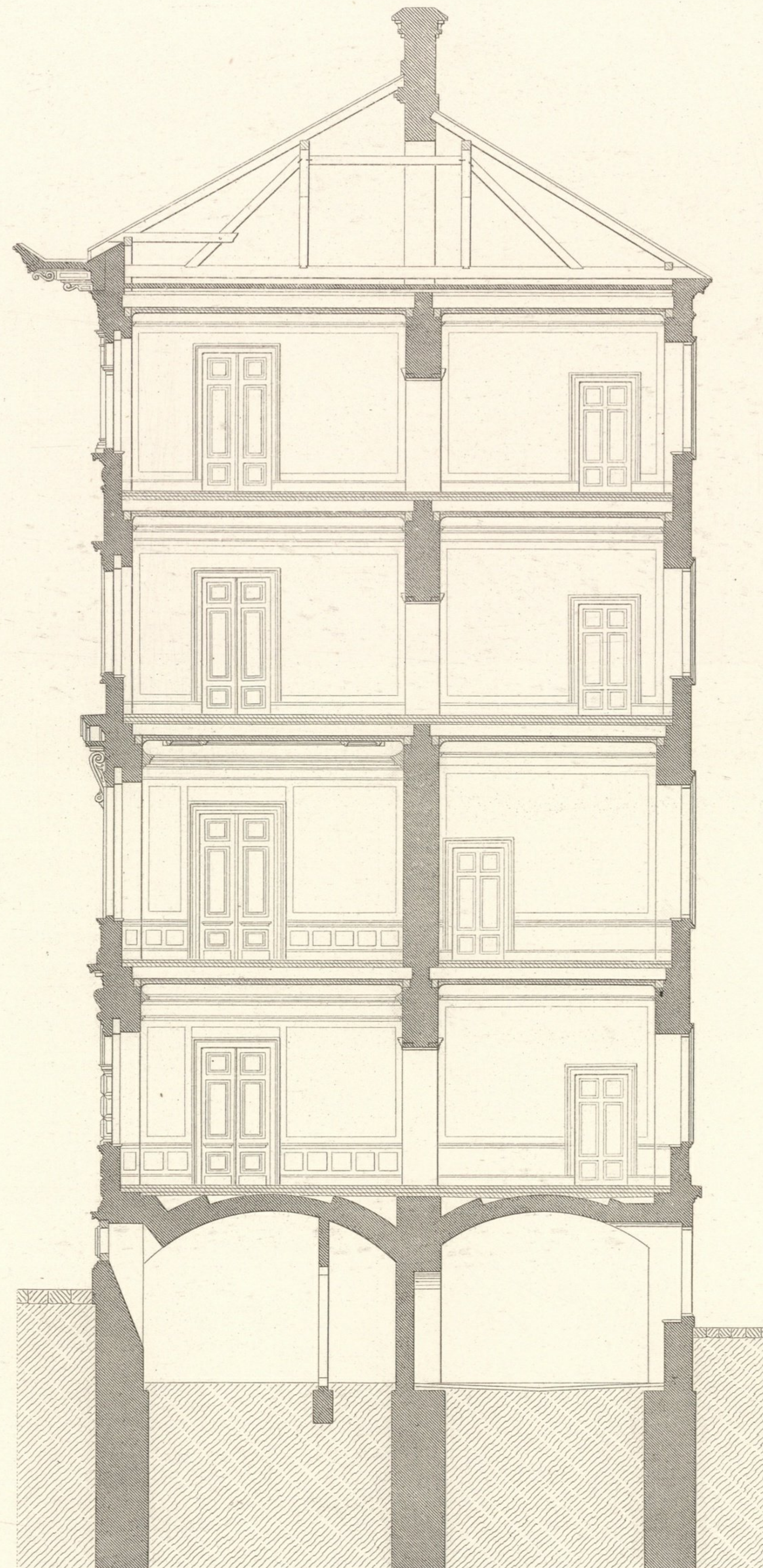


A. ERDGESCHOSS. REZ-DE-CHAUSSEE.

- a. Vestibul Vestibule
- b. Vorzimmer Antichambre
- c. Küche Cuisine
- d. Dienerzimmer Chamb des domestiques
- e. Gang Couloir
- f. Wohnzimmer Appartements
- g. Salon Salon



GUSSHAUSSTRASSE N° 10.

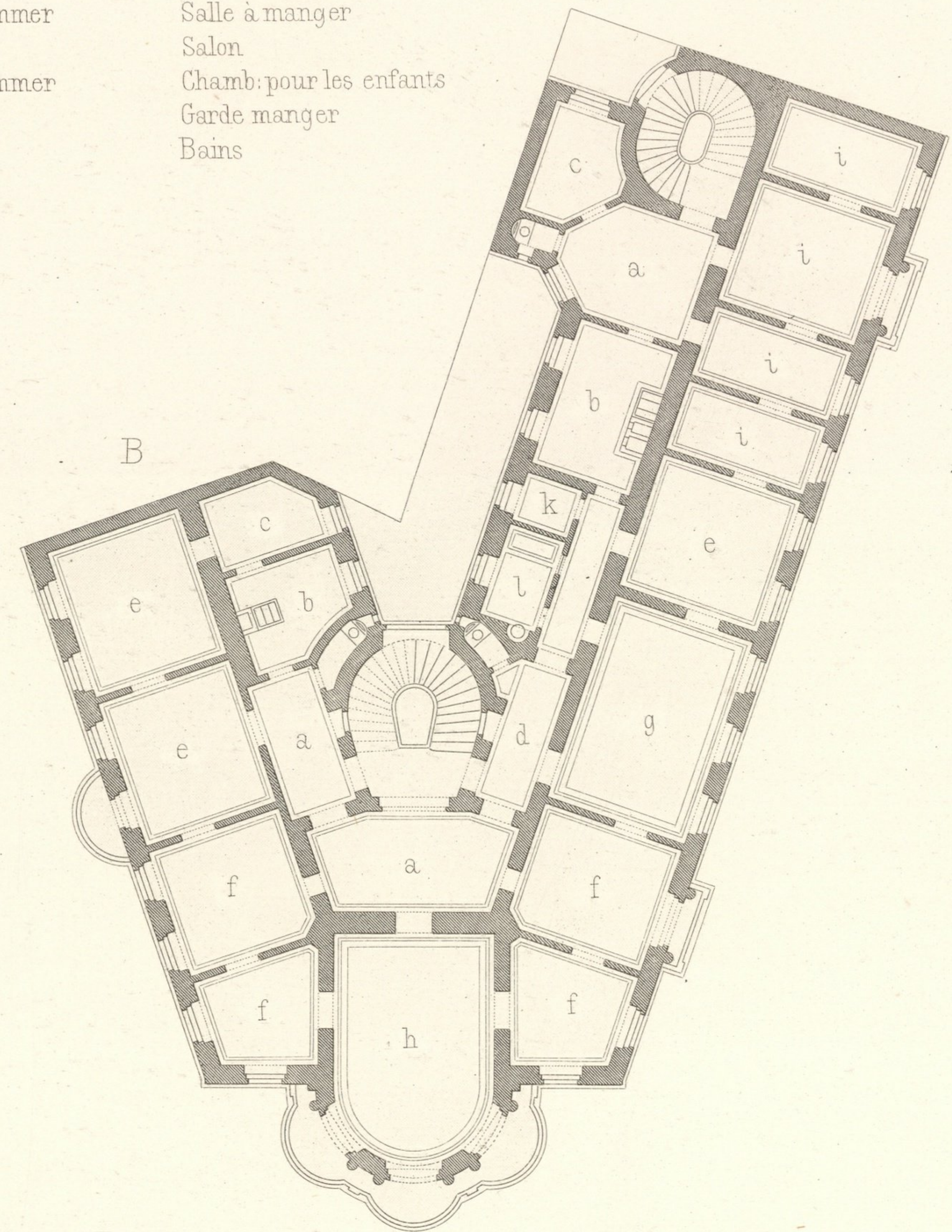


B. I. STOCK.

- a. Vorzimmer
- b. Küche
- c. Dienstbotenzimmer
- d. Gang
- e. Schlafzimmer
- f. Wohnzimmer
- g. Speisezimmer
- h. Salon
- i. Kinderzimmer
- k. Speise
- l. Bad

II. ETAGE.

- Antichambre
- Cuisine
- Chamb: de domestiques
- Couloir
- Chambre à coucher
- Appartements
- Salle à manger
- Salon
- Chamb: pour les enfants
- Garde manger
- Bains



Wien Lehmann u Wentzel.

Wendeler u. Hieser. Archit.

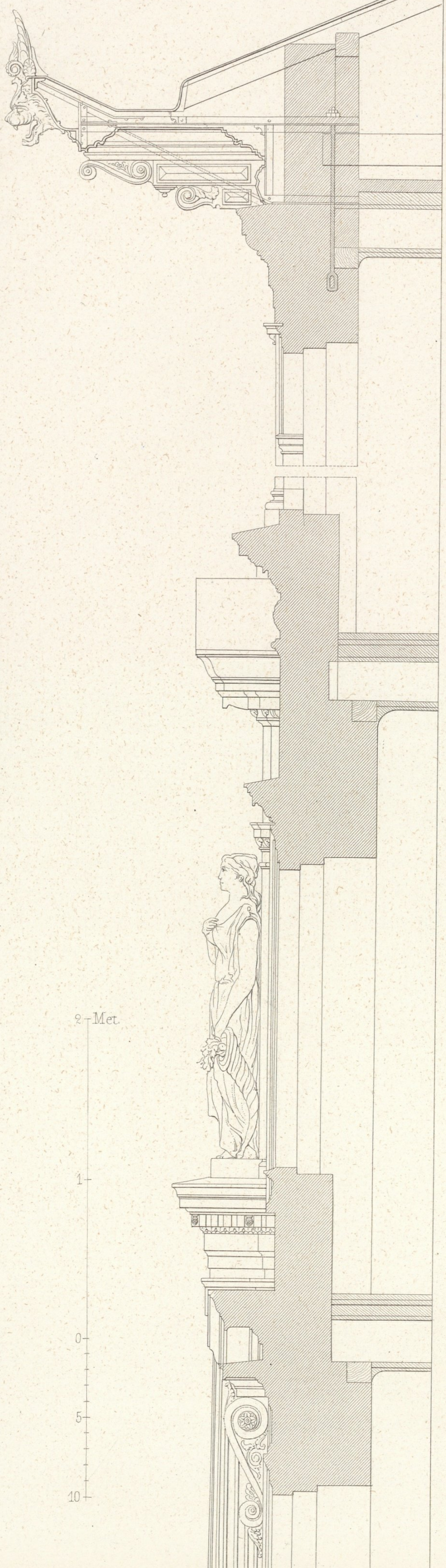
Atelier Obermayer. Gunkel.

inventar
Abth. E
Nr. 798.

Impr F. Kargl, Wien.

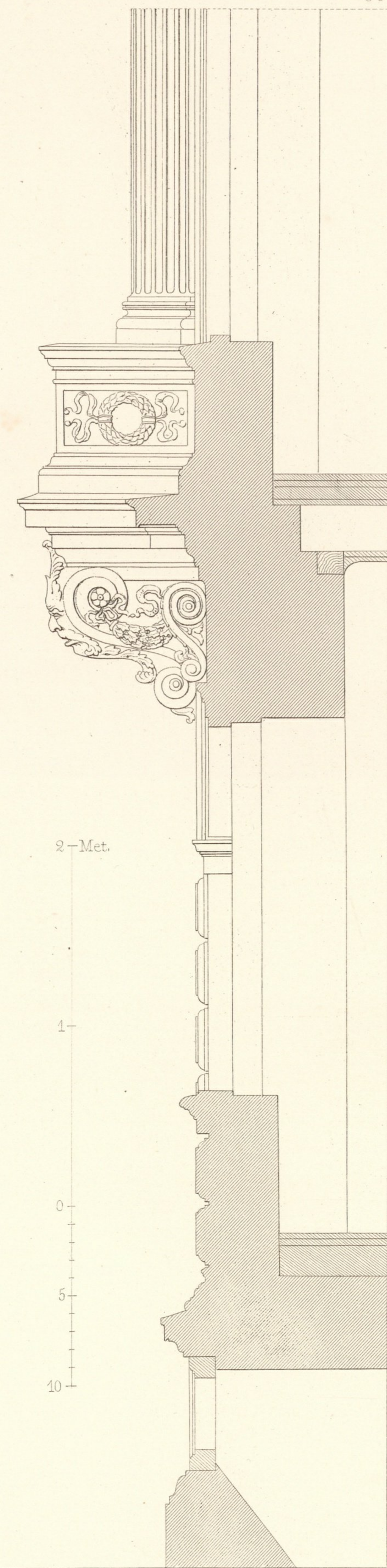
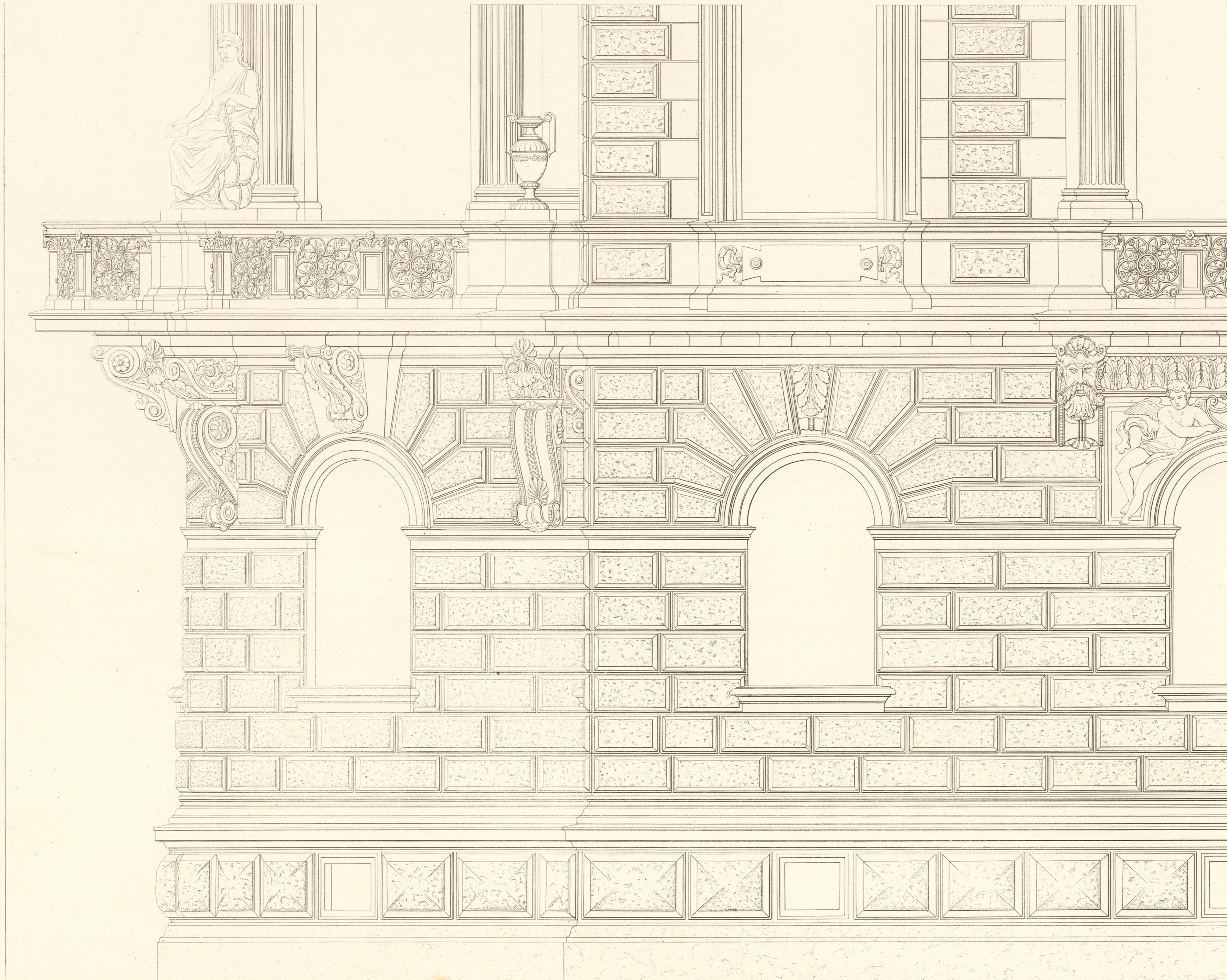


GUSSHAUSSTRASSE N° 10.



Inventory
Abth. E
Nr. 798





Wien, Lehmann u. Wentzel.

Wendeler u. Hieser Archit.

Atelier Obermayer, Zimmermann.

Inventar
Abth. E
Nr. 798

