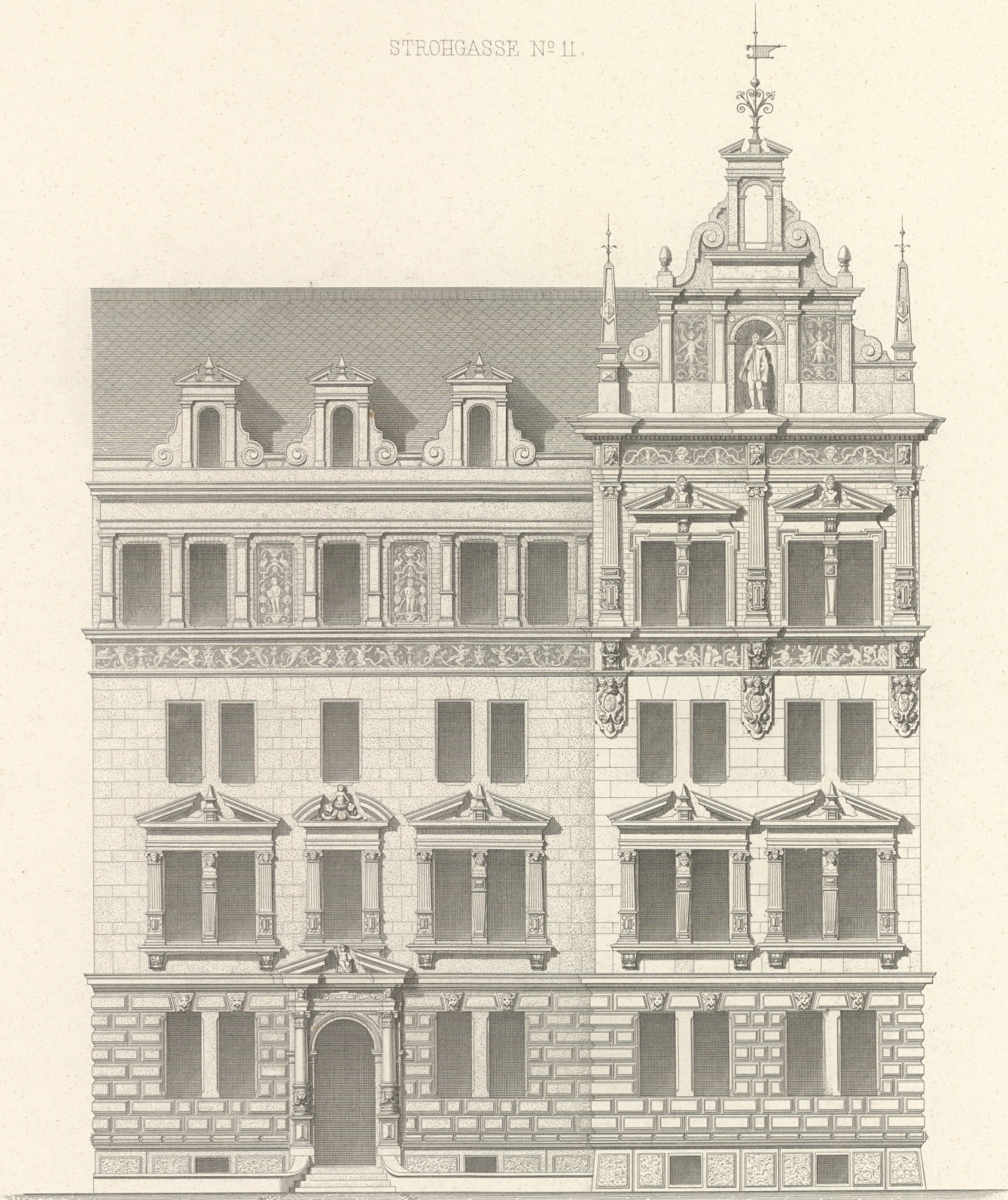
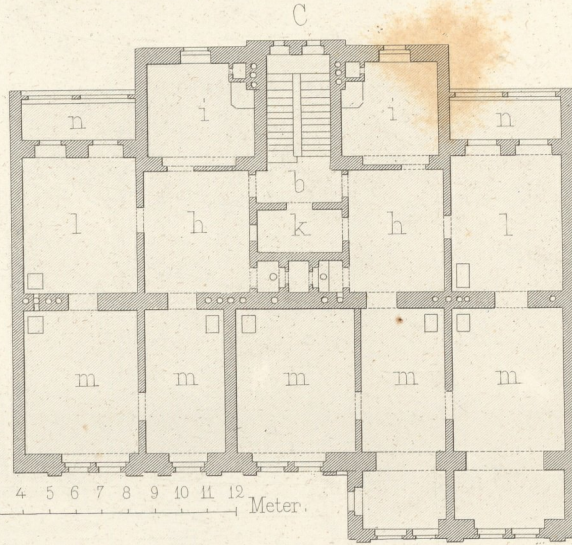
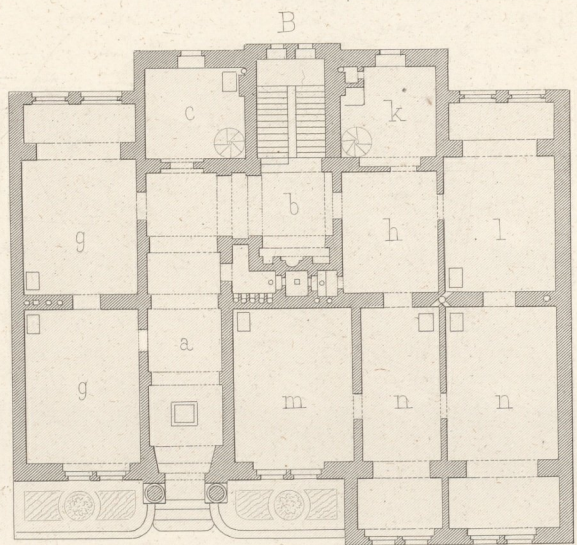


STROHGASSE N° 11.



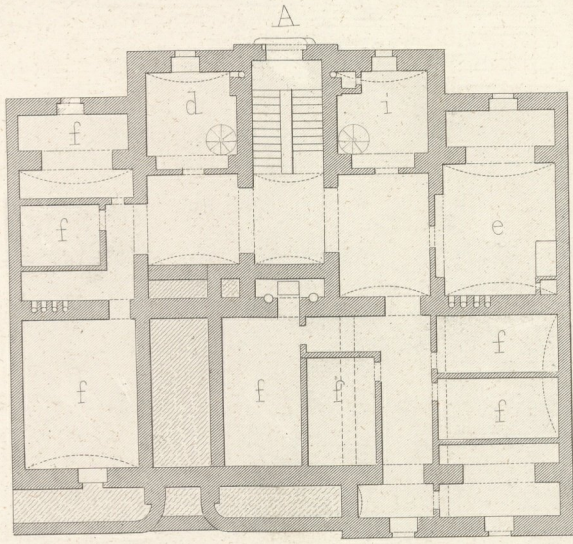
10 5 0 1 2 3 4 5 6 7 8 9 10 Meter.



0 1 2 3 4 5 6 7 8 9 10 11 12 Meter.

- A. KELLERGESCHOSS.
- B. ERDGESCHOSS.
- C. STOCKWERCKE.
- a. Vestibul
- b. Treppe
- c. Portier
- d. Portier-Küche
- e. Waschküche
- f. Kellerräume für Holz, Kohlen &c.
- g. Bureau u. Atelier
- h. Vorzimmer
- i. Küche
- k. Dienftbotenzimmer
- l. Speisezimmer
- m. Wohnzimmer
- n. Loggia

- A. CAVES.
- B. REZ-DE-CHAUSSEE.
- C. ETAGES.
- a. Vestibule
- b. Escalier
- c. Portier
- d. Cudfne du portier
- e. Lavoir
- f. Caves pour bois, charbon &c.
- g. Bureau et atelier
- h. Antichambre
- i. Cudfne
- k. Chambre des domestiques
- l. Salle à manger
- m. Appartements
- n. Galeries

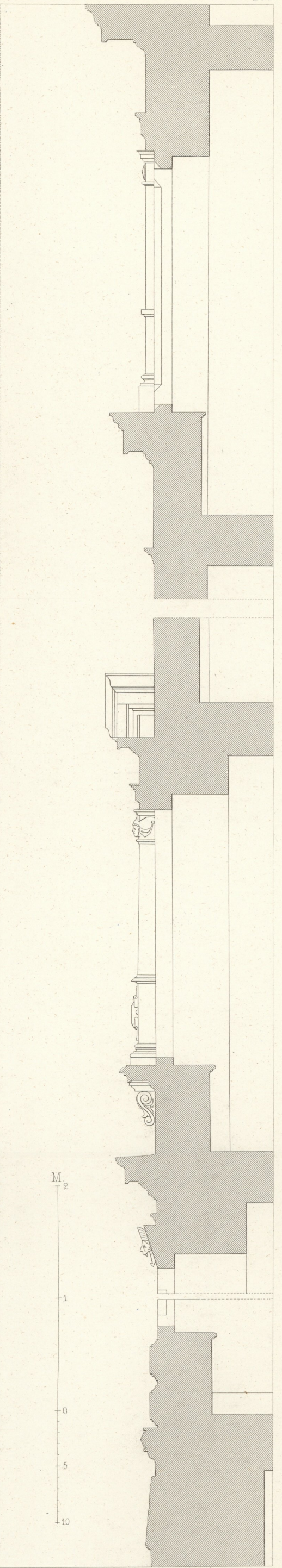
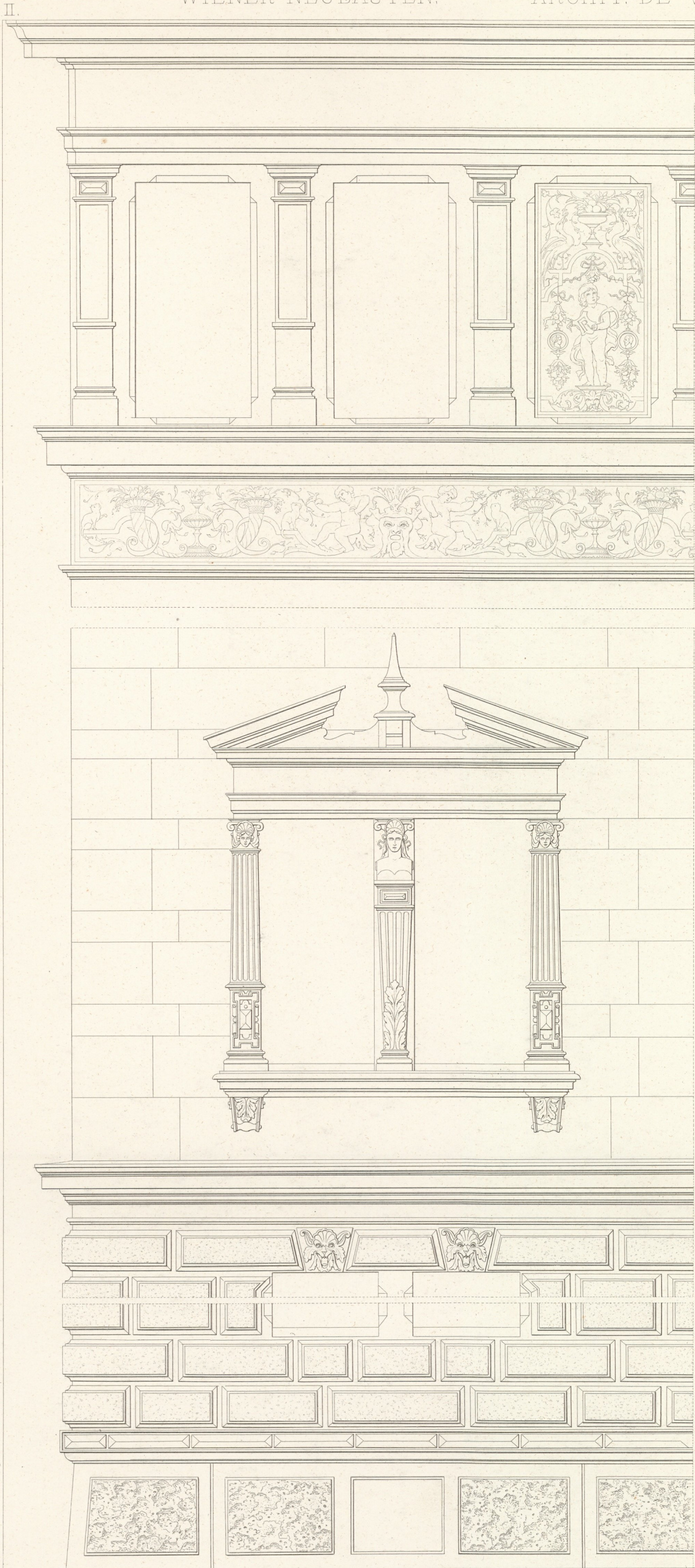


Wien, Lehmann u. Wentzel.

F. Roth. Archit.

Atel. Obermayer. Zimmermann.





Wien, Lehmann u. Wentzel.

Archit. F. Roth.

Atelier, Obermayer, Zimmermann.