

Abb. 124.
Pumpe im Wasserwerk Smichow.

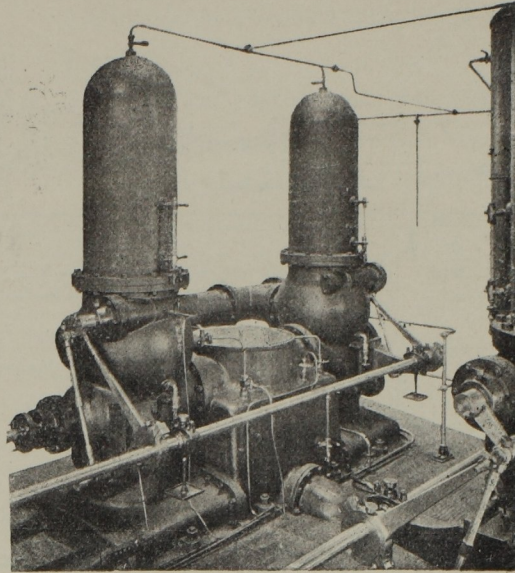


Abb. 125.
Pumpe im Wasserwerk Smichow.

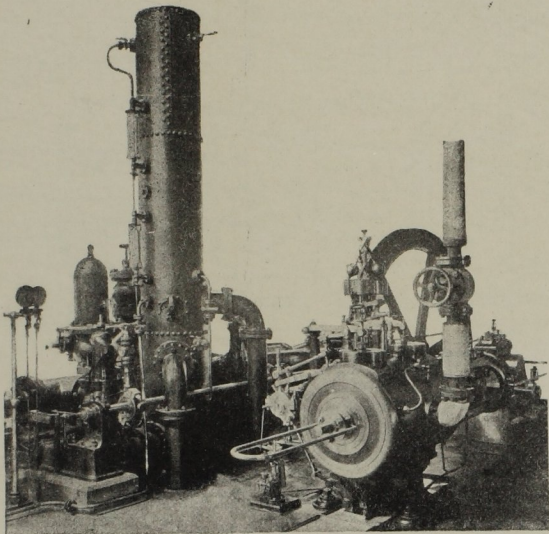


Abb. 126.
Pumpmaschine des Wasserwerks Smichow.

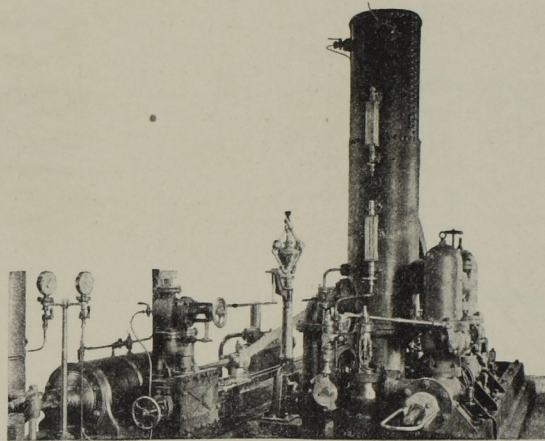


Abb. 127.
Pumpmaschine des Wasserwerks Smichow.

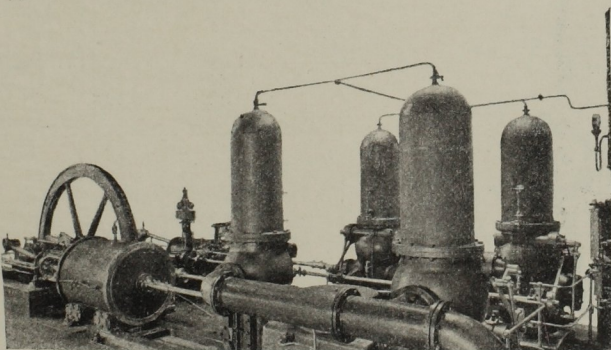


Abb. 128.
Pumpmaschine des Wasserwerks Smichow.

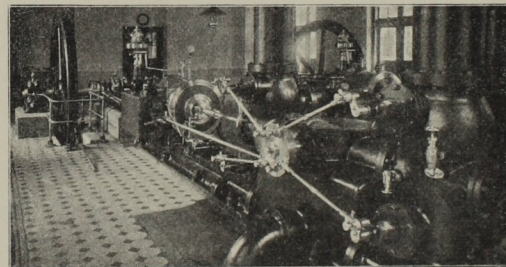


Abb. 129.
Pumpmaschine des Wasserwerks Gmunden.

Wasserwerkmaschinen der Städte Smichow und Gmunden,
ausgeführt von F. Ringhoffer in Smichow.