

Abb. 76. Lageplan der Pumpstation des Radialsystems IV.

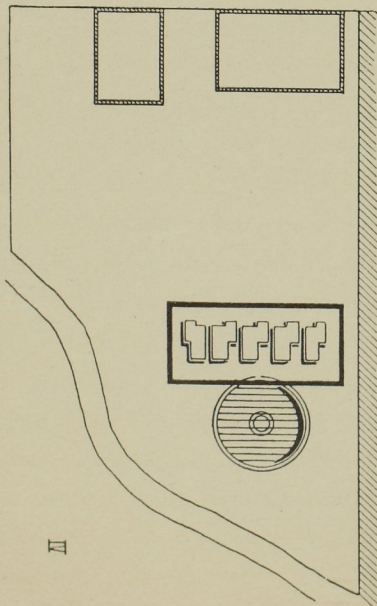


Abb. 77. Pumpstation mit elektromotorischem Betrieb.

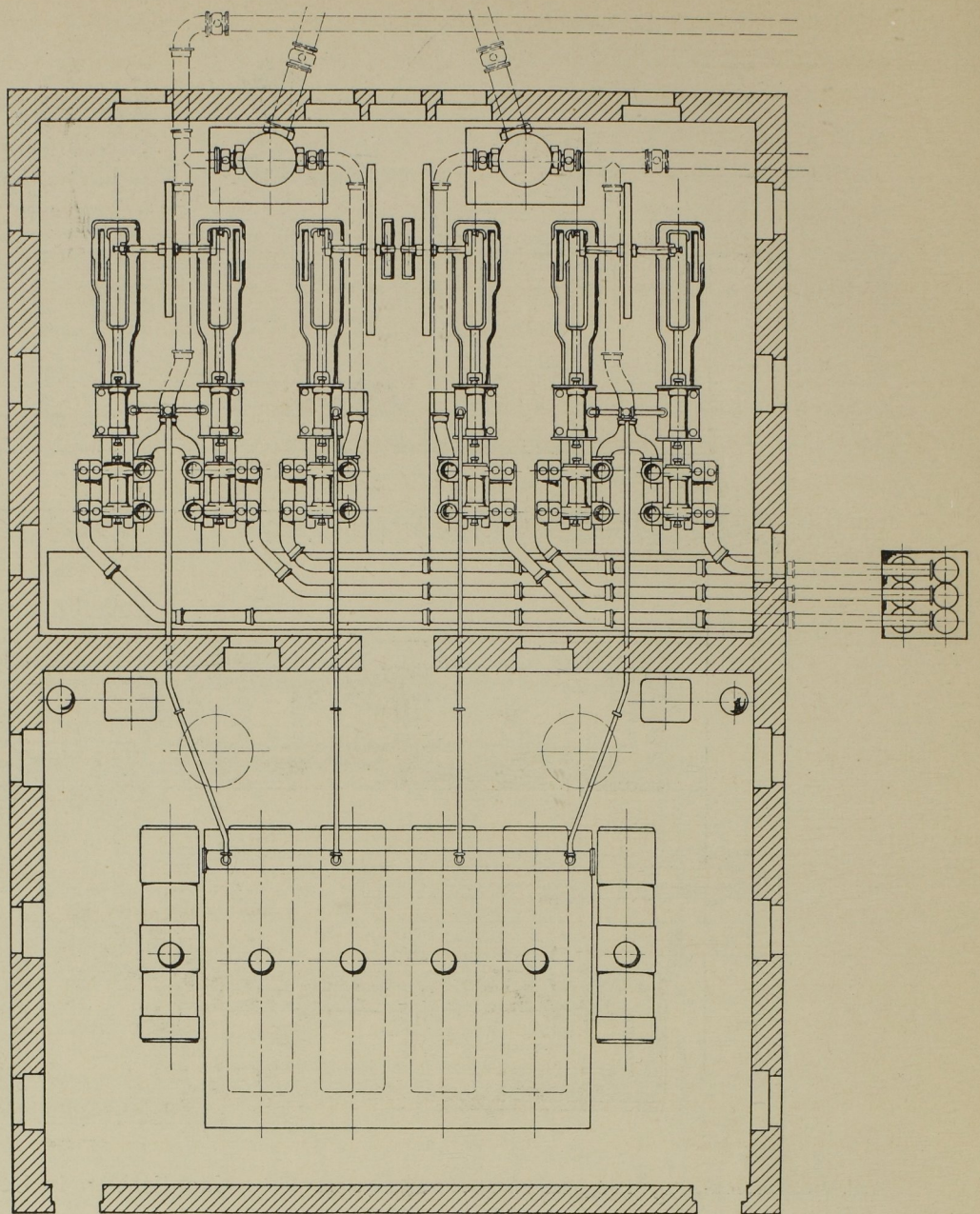


Abb. 78. Dampf-Pumpmaschinenanlage des Radialsystems III der Kanalisation in Berlin. Masst. 1:200.

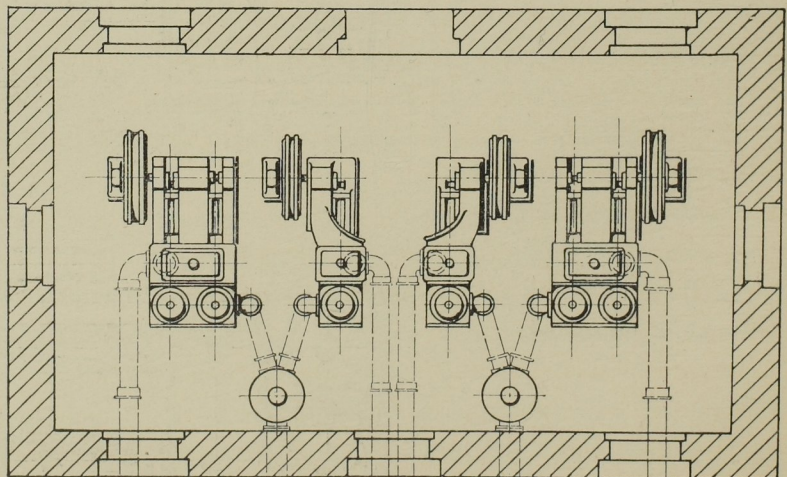
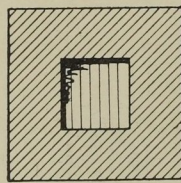


Abb. 79. Elektromotorisch betriebene Pumpenanlage gleicher Leistung. Masst. 1:200.