

ANSICHTSKIZZE UND DETAILS EINES HAUSES IN OBERREITH.

Fig. 1.

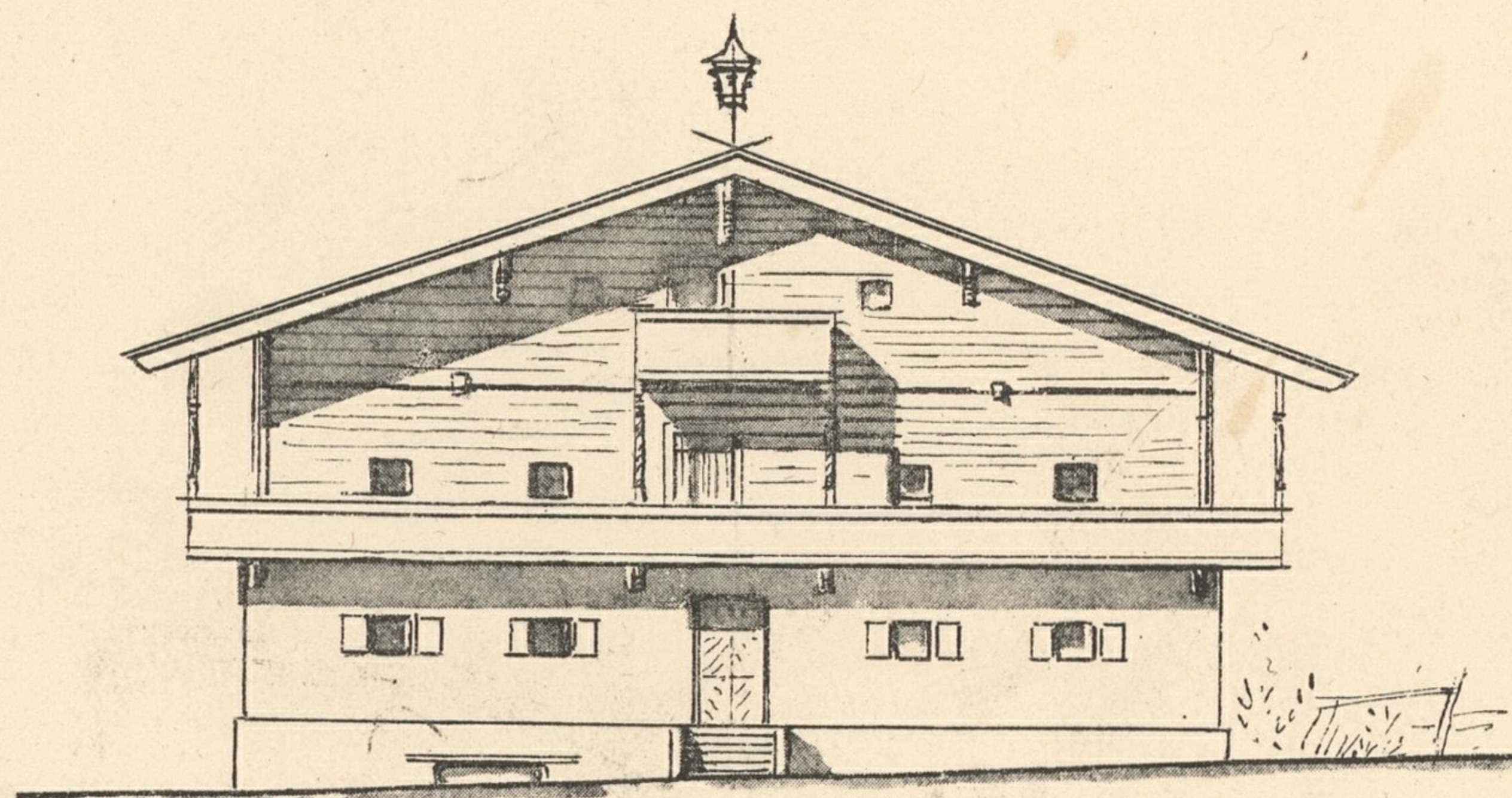


Fig. 2.

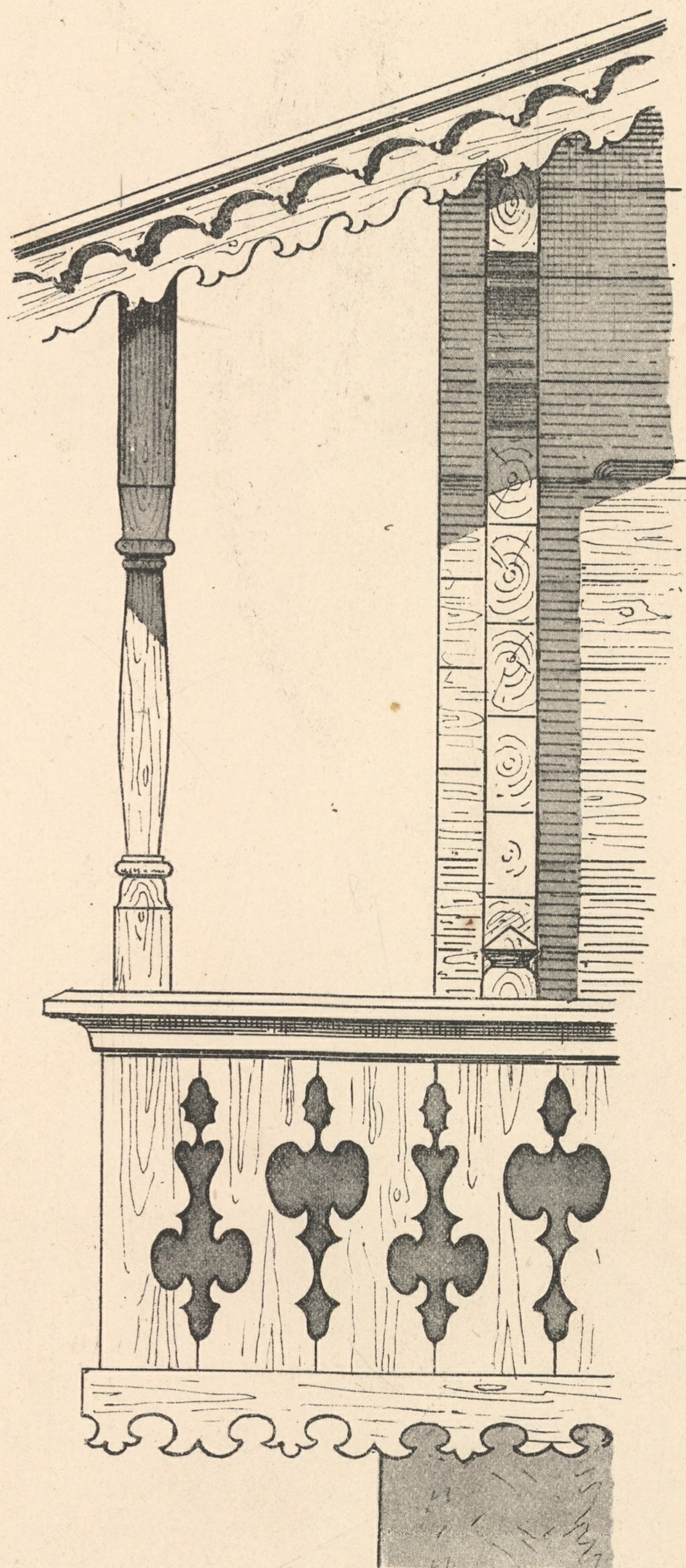
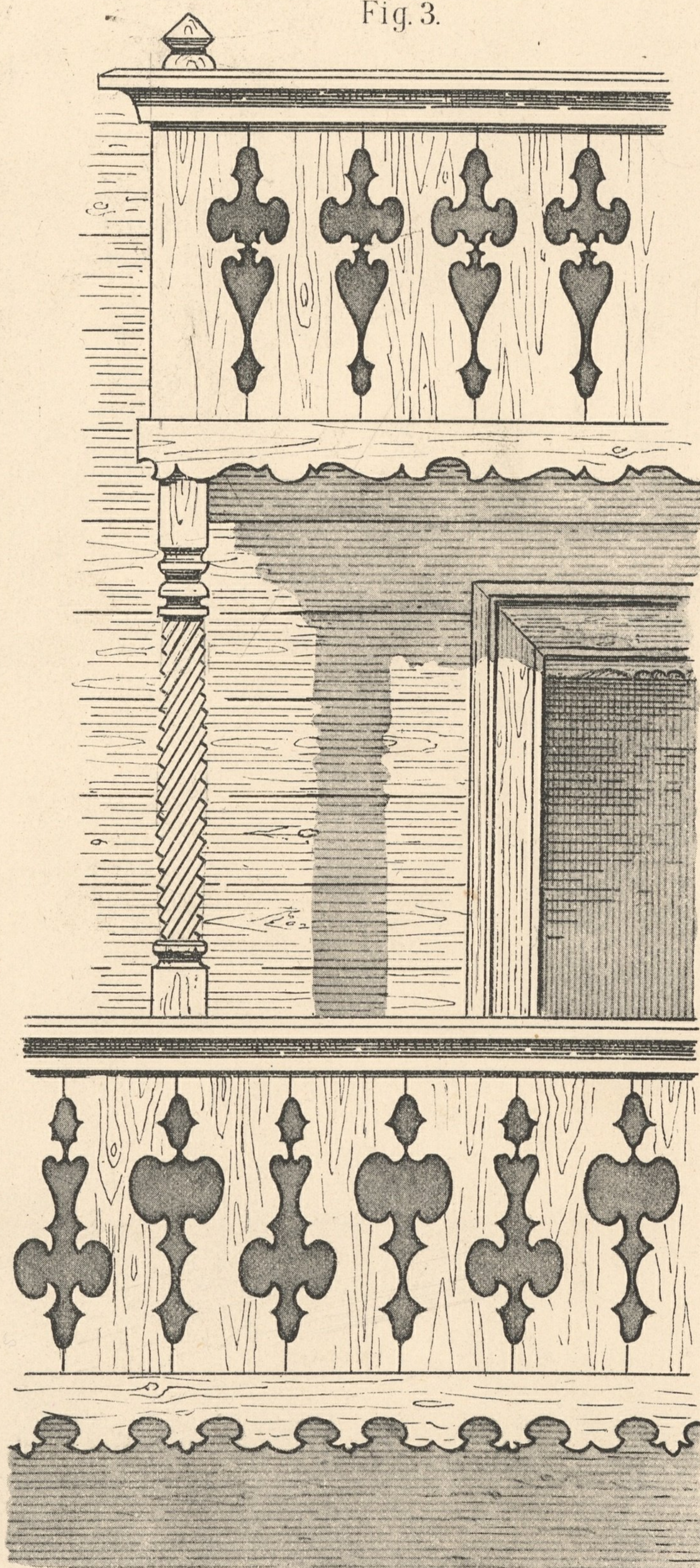


Fig. 3.



Massstab für Detail's 1:20.

Verlag v. Ad. Lehmann in Wien.

ANSICHTSKIZZE UND DETAILS EINES HAUSES IN OBERREITH.

Fig. 1.

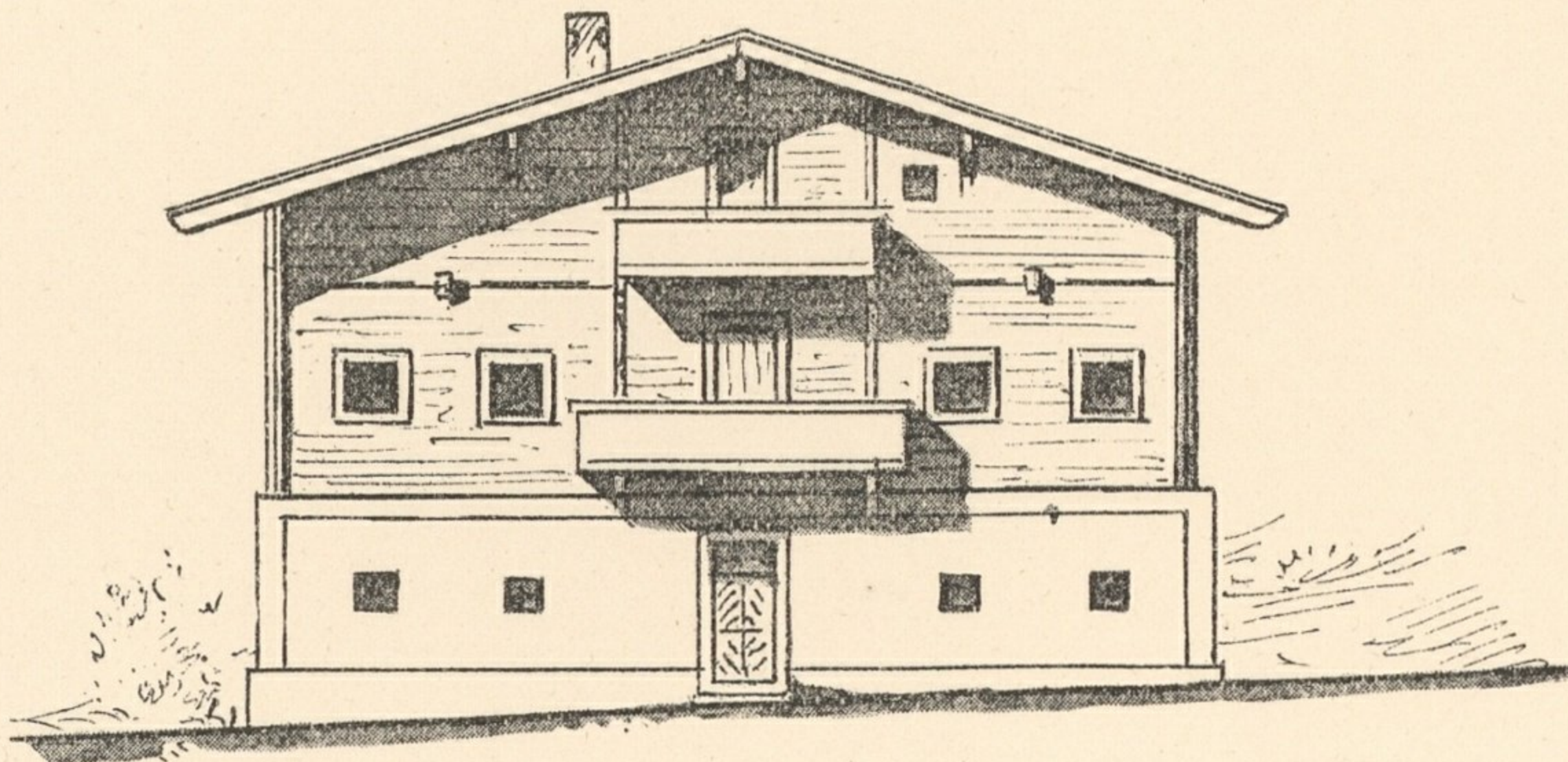


Fig. 2.

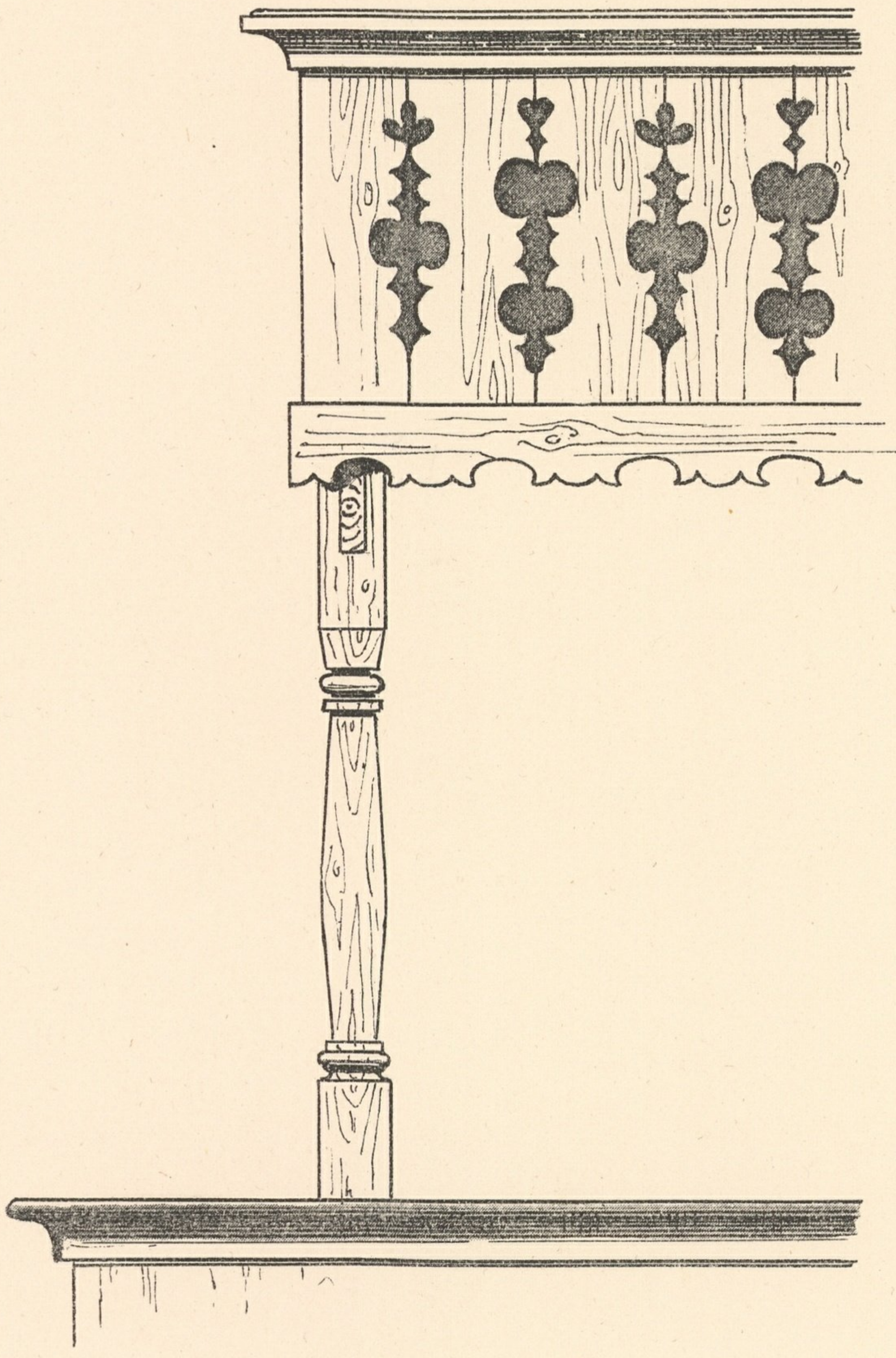


Fig. 4.

Fig. 3.

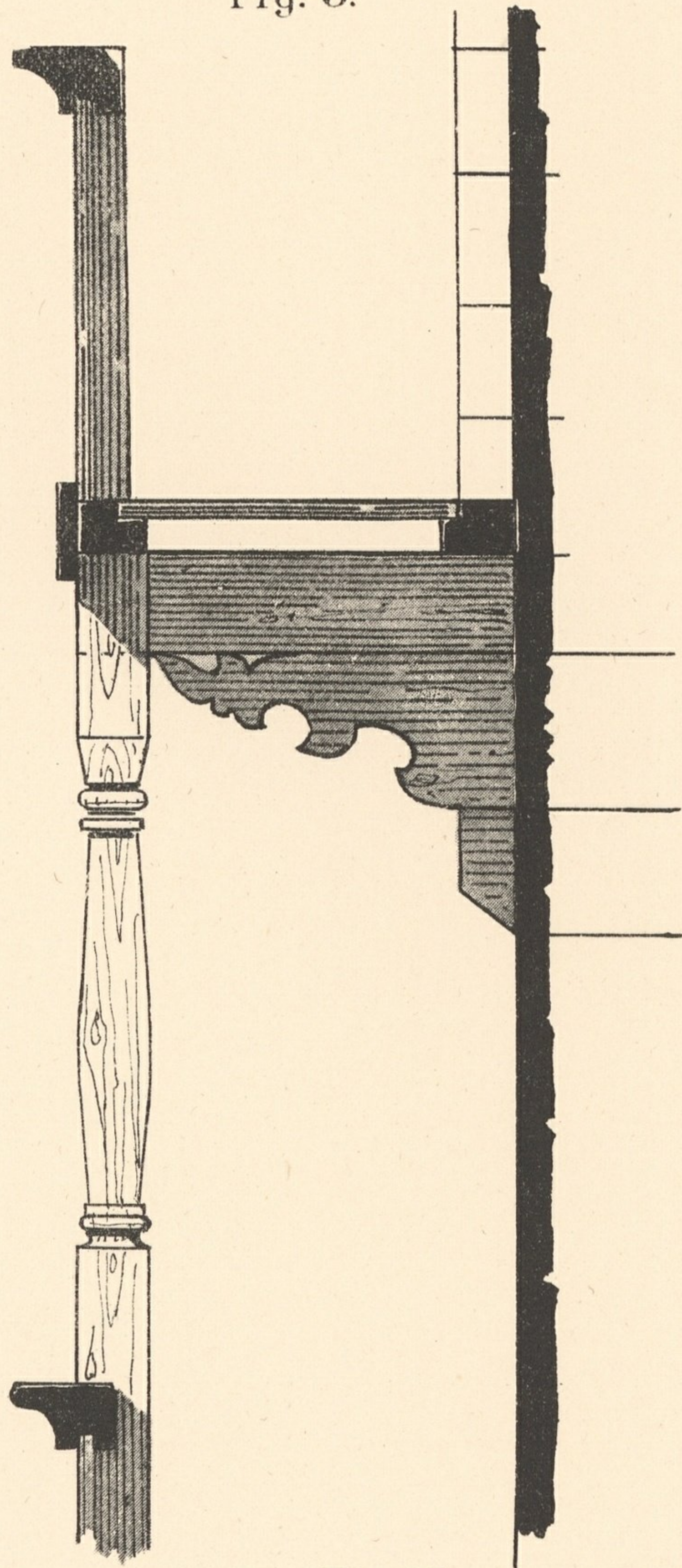


Fig. 5.

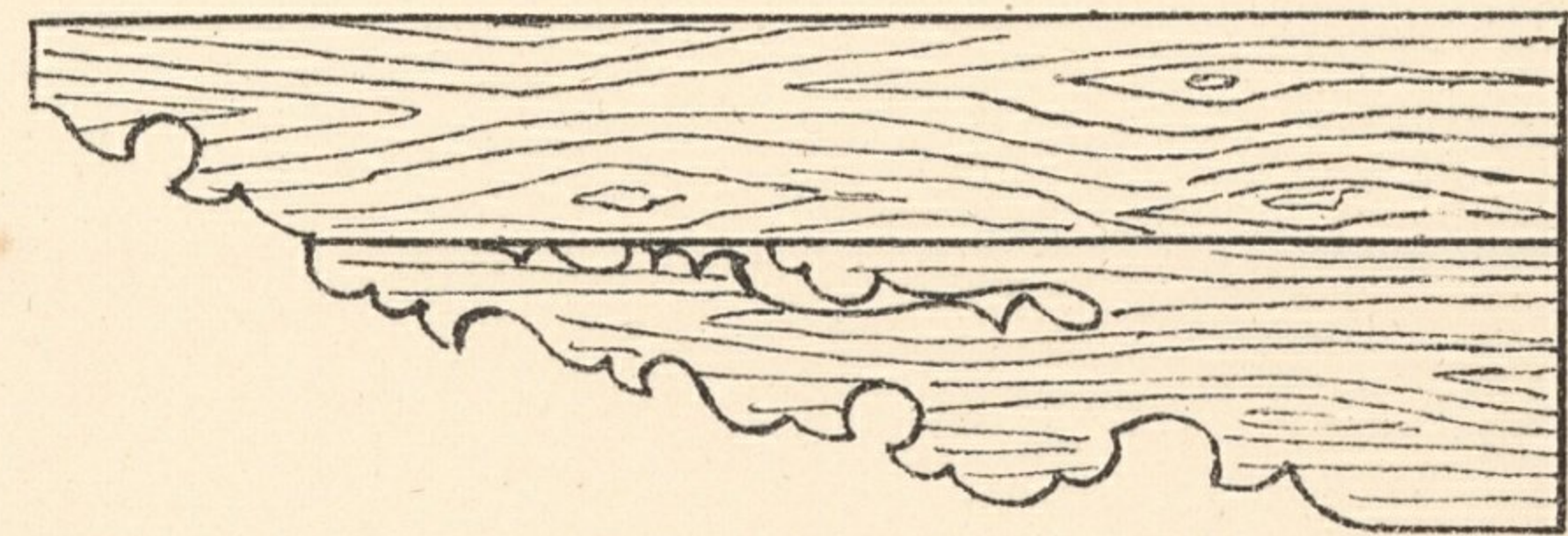
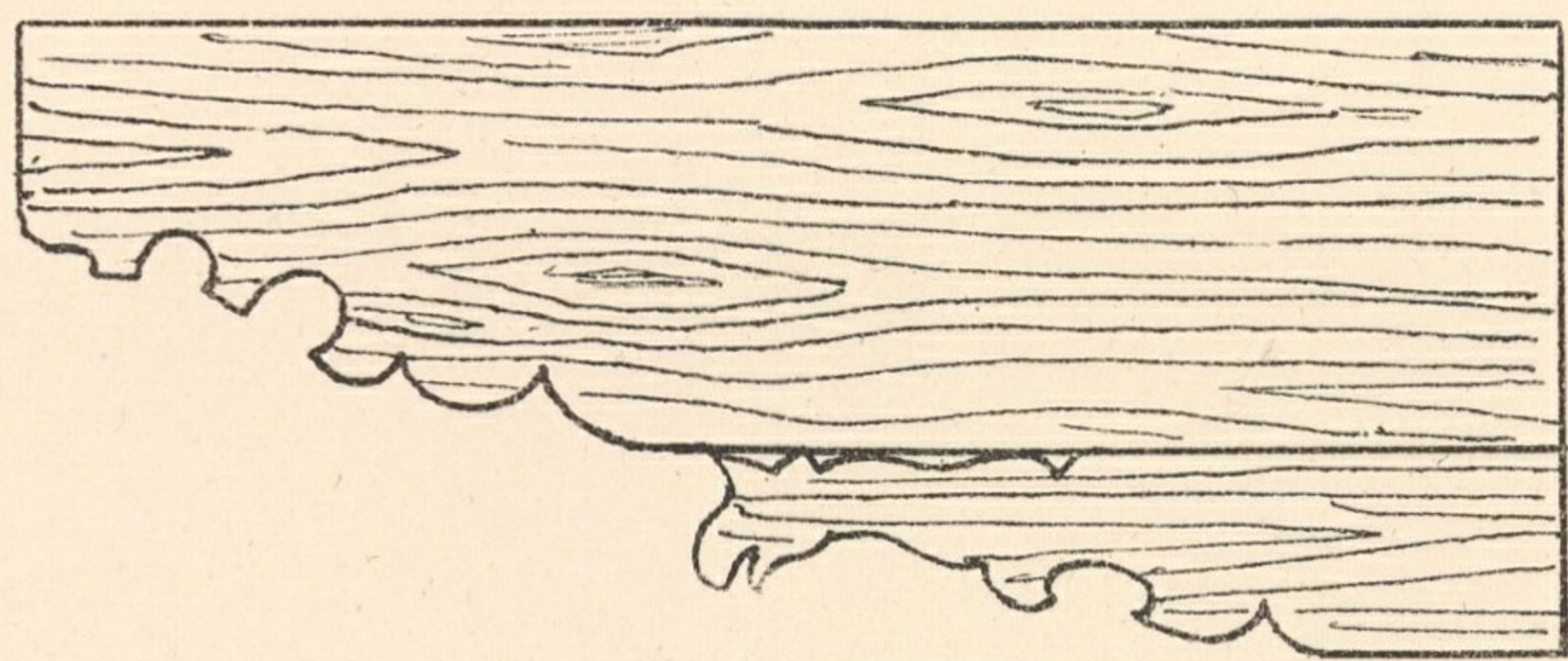
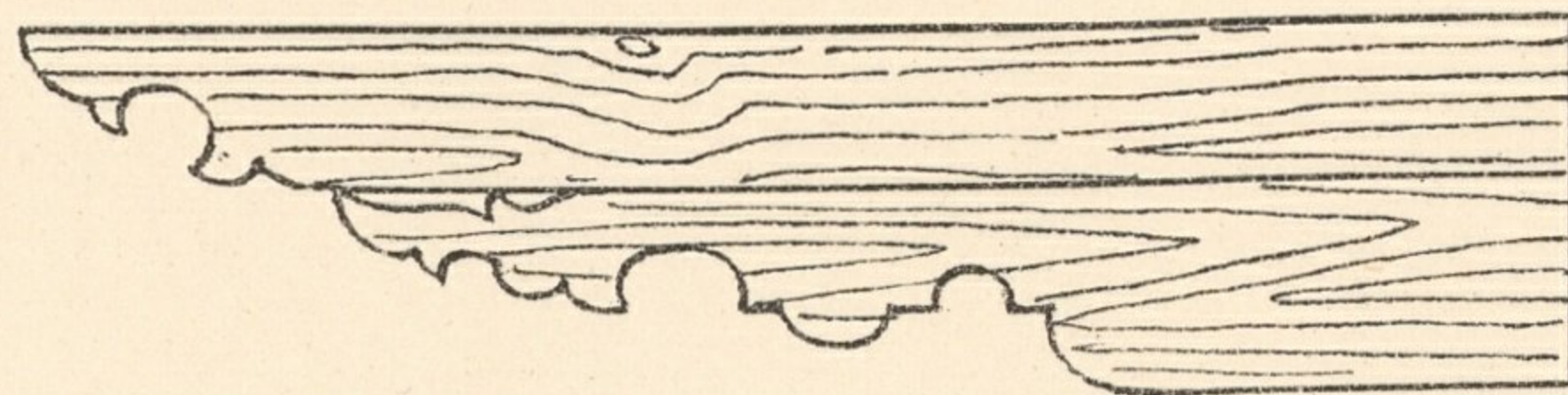


Fig. 6.



Massstab für Detail's 1:20.