

Pont du système Linville pour portées supérieures à 45 mètres

Fig. 1. Elevation générale

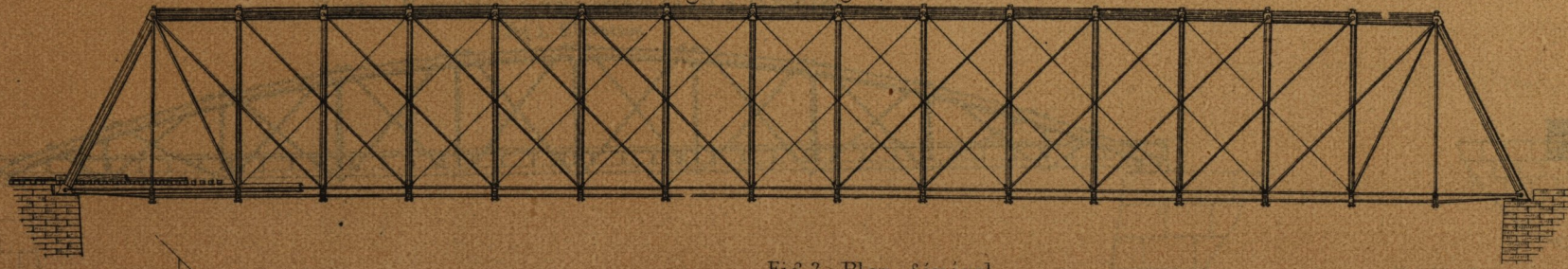


Fig. 8. Plan près d'une culée

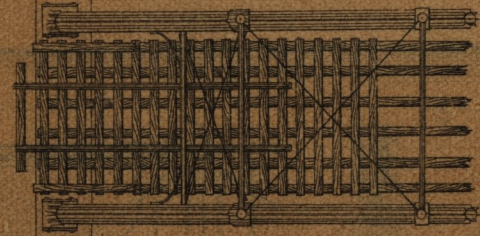


Fig. 2. Plan général

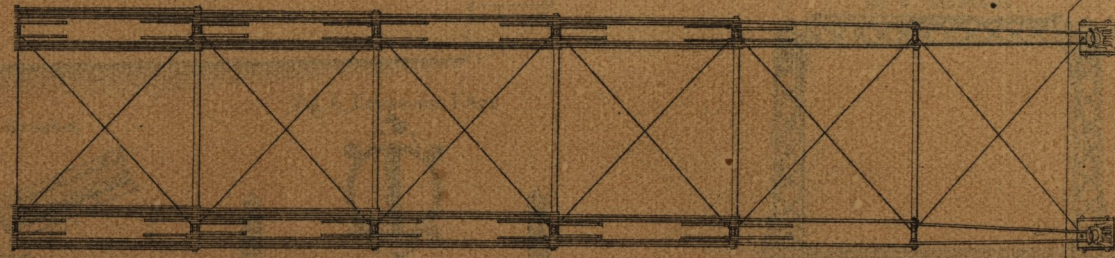
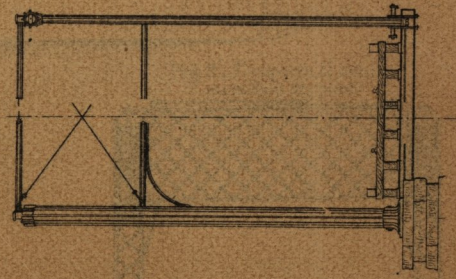


Fig. 9. Vue transversale
Demi élévation Demi coupe



Détail du montant extrême

Fig. 4. Elevation

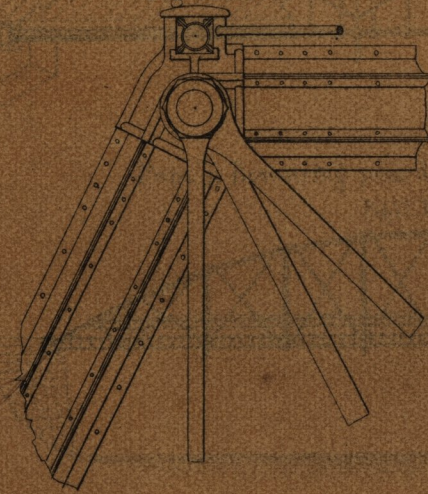
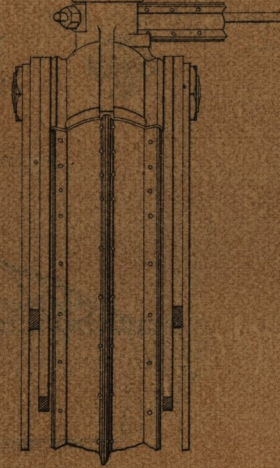


Fig. 5. Vue par bout



Détail d'un montant intermédiaire

Fig. 6. Elevation

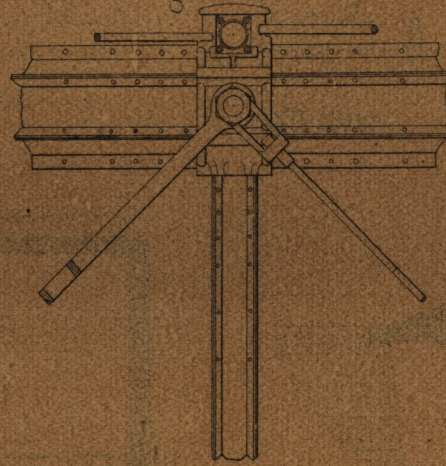


Fig. 7. Coupe transversale

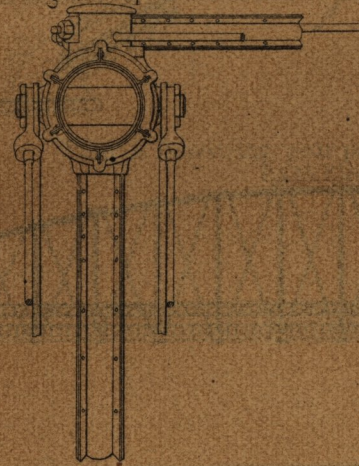


Fig. 3. Elevation d'une ferme

