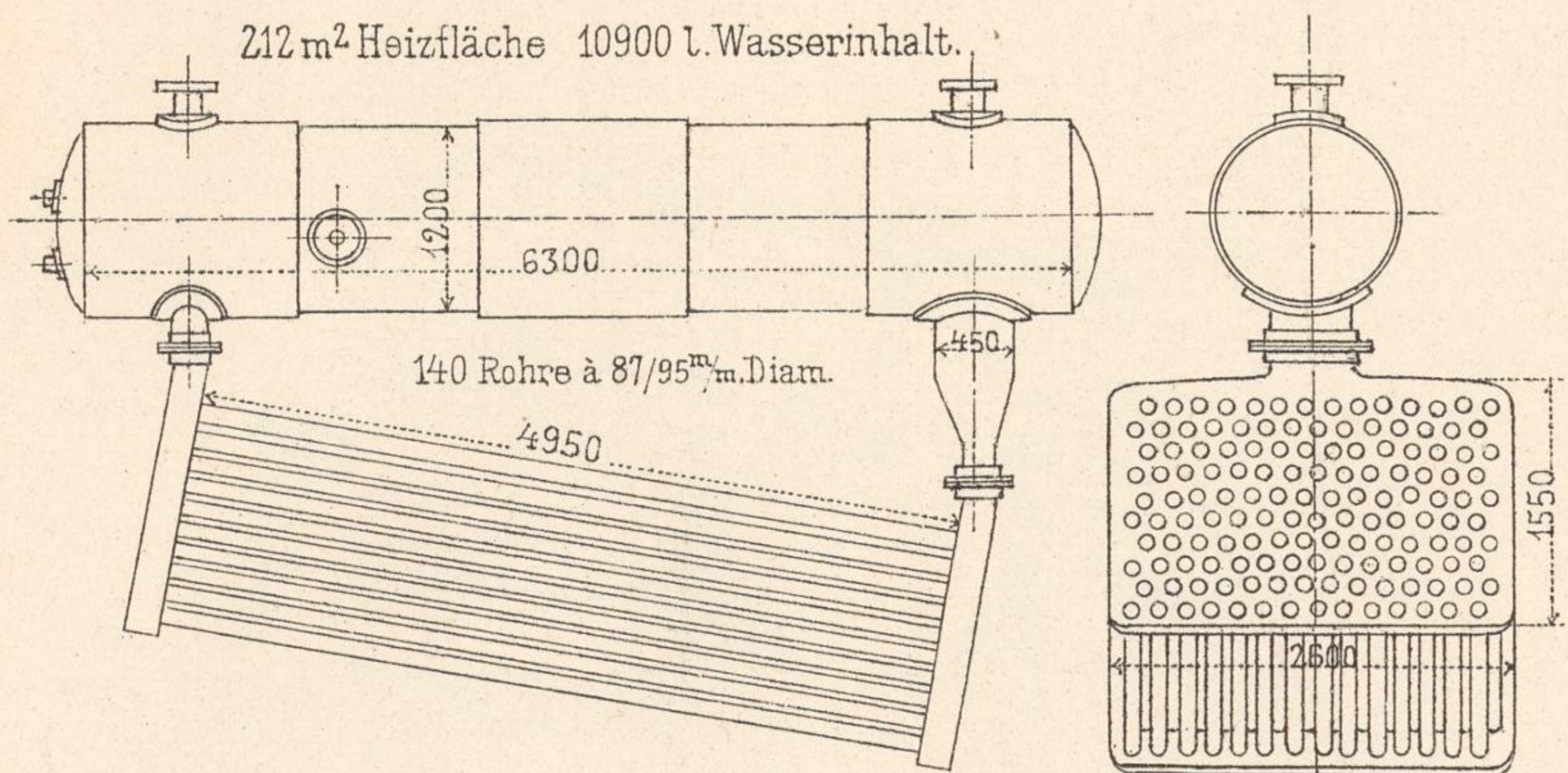
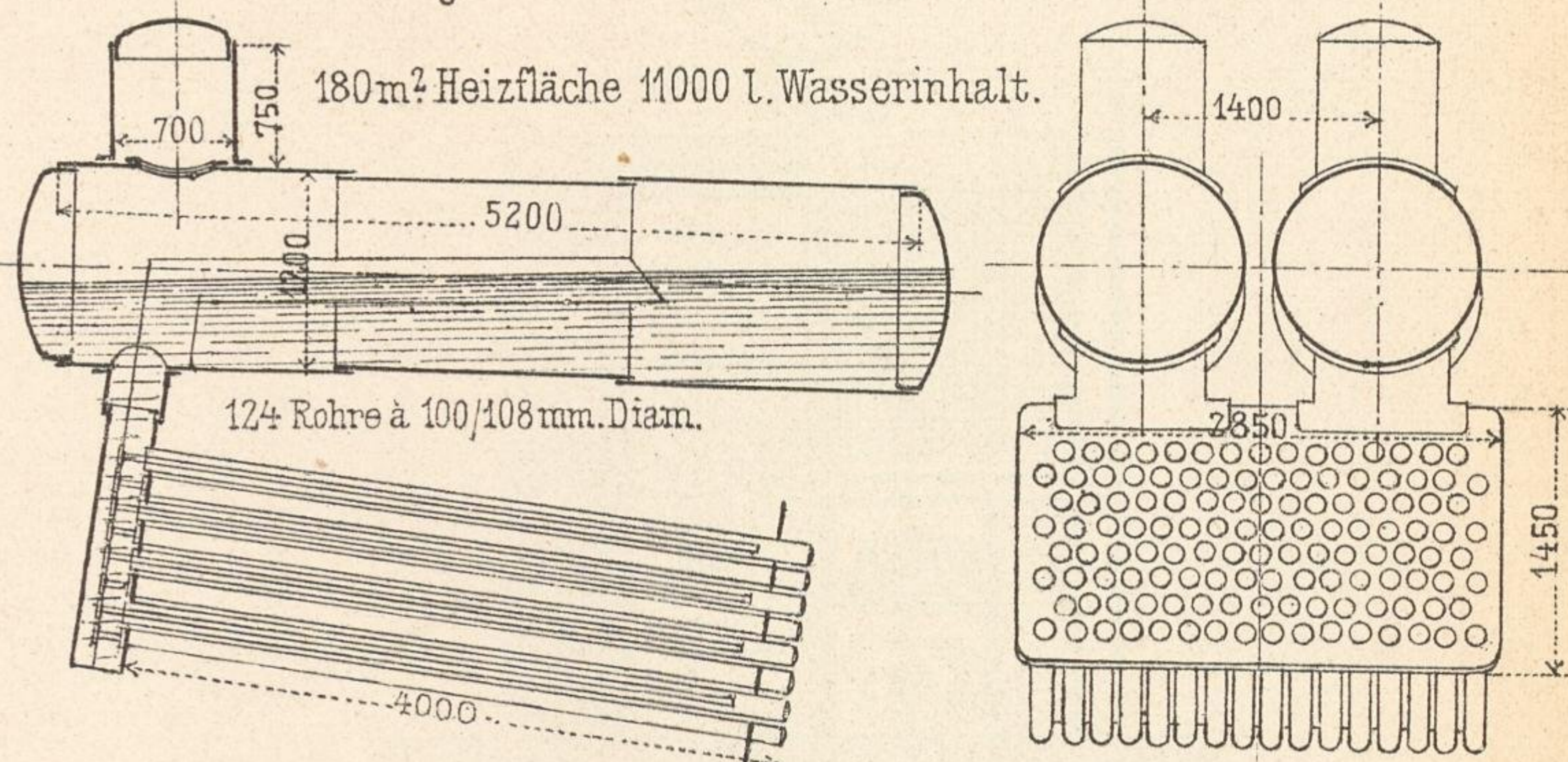


# Gebräuchliche ausgeführte Kessel-Arten (Wasserröhrenkessel.)

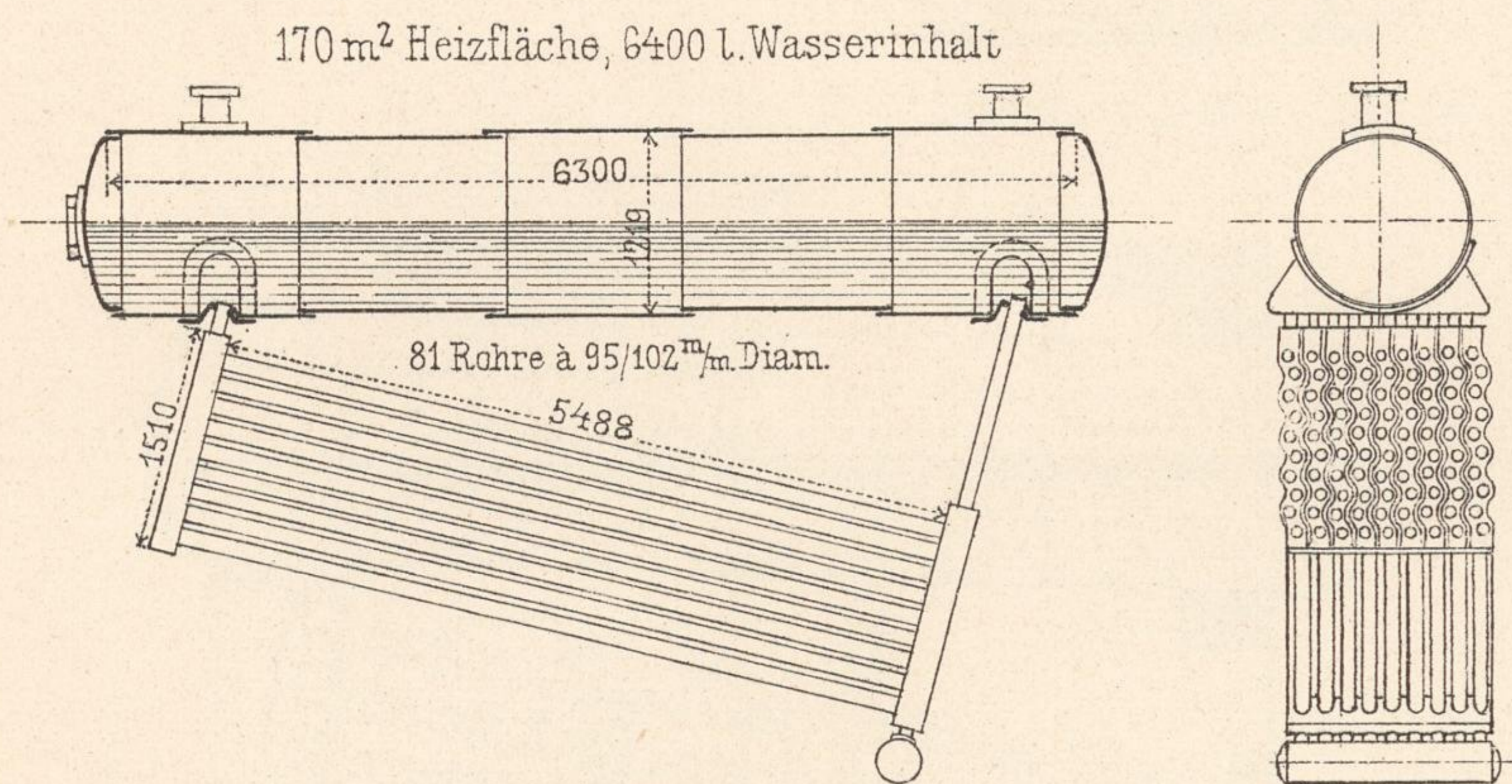
System Steinmüller



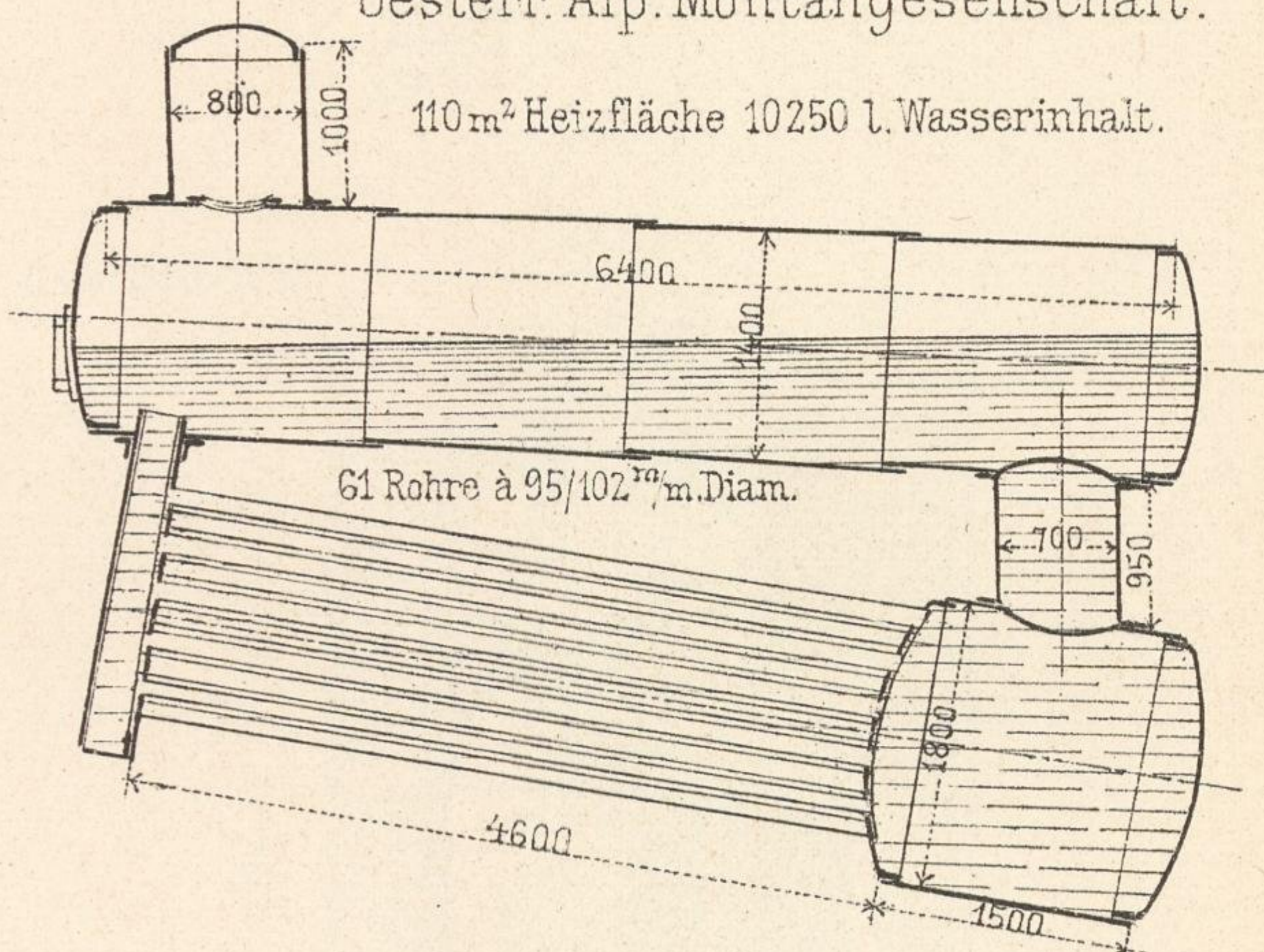
System Dürr, Gehre u C<sup>o</sup>



System Babcock u. Wilcox.

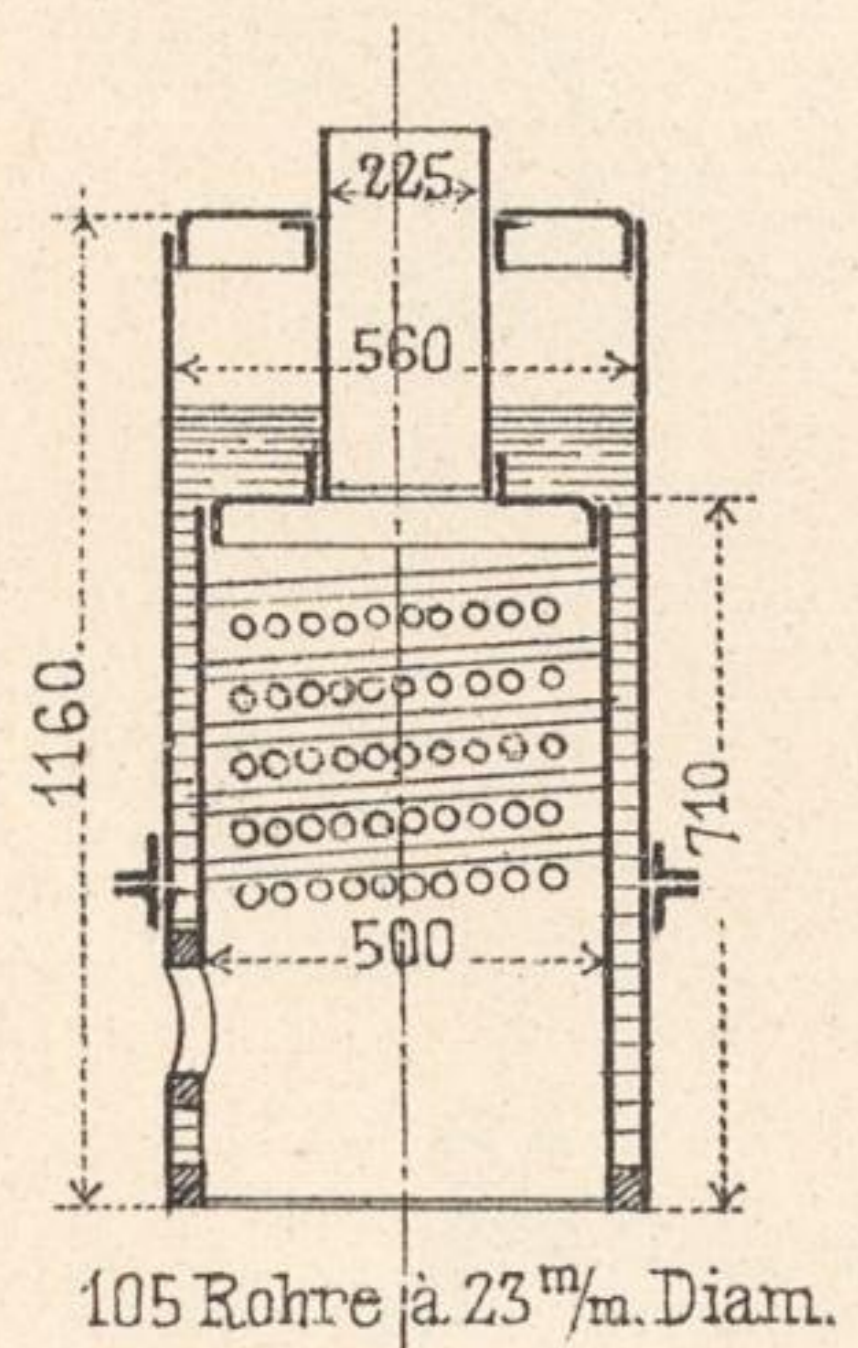


Oesterr. Alp. Montangesellschaft.

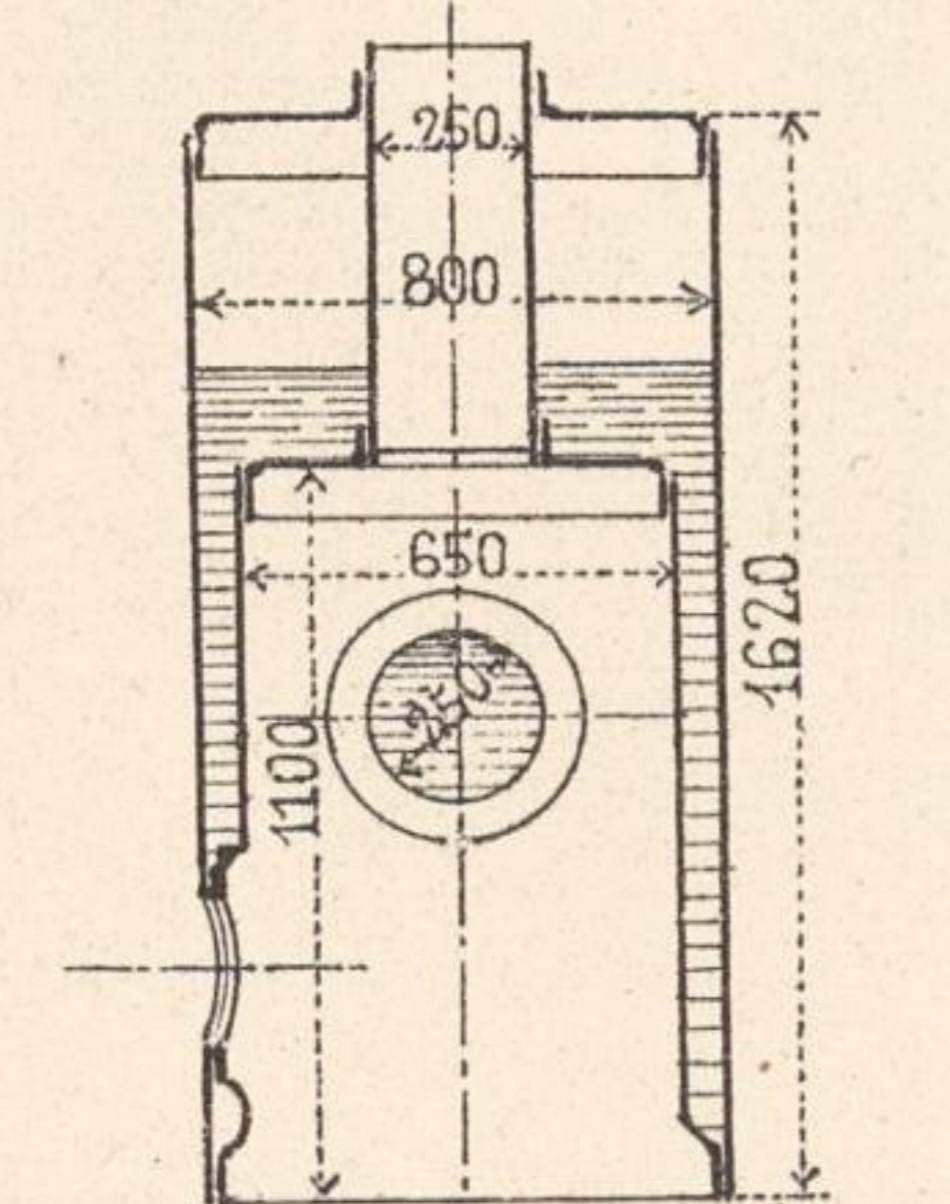


Feuerbüchskessel.

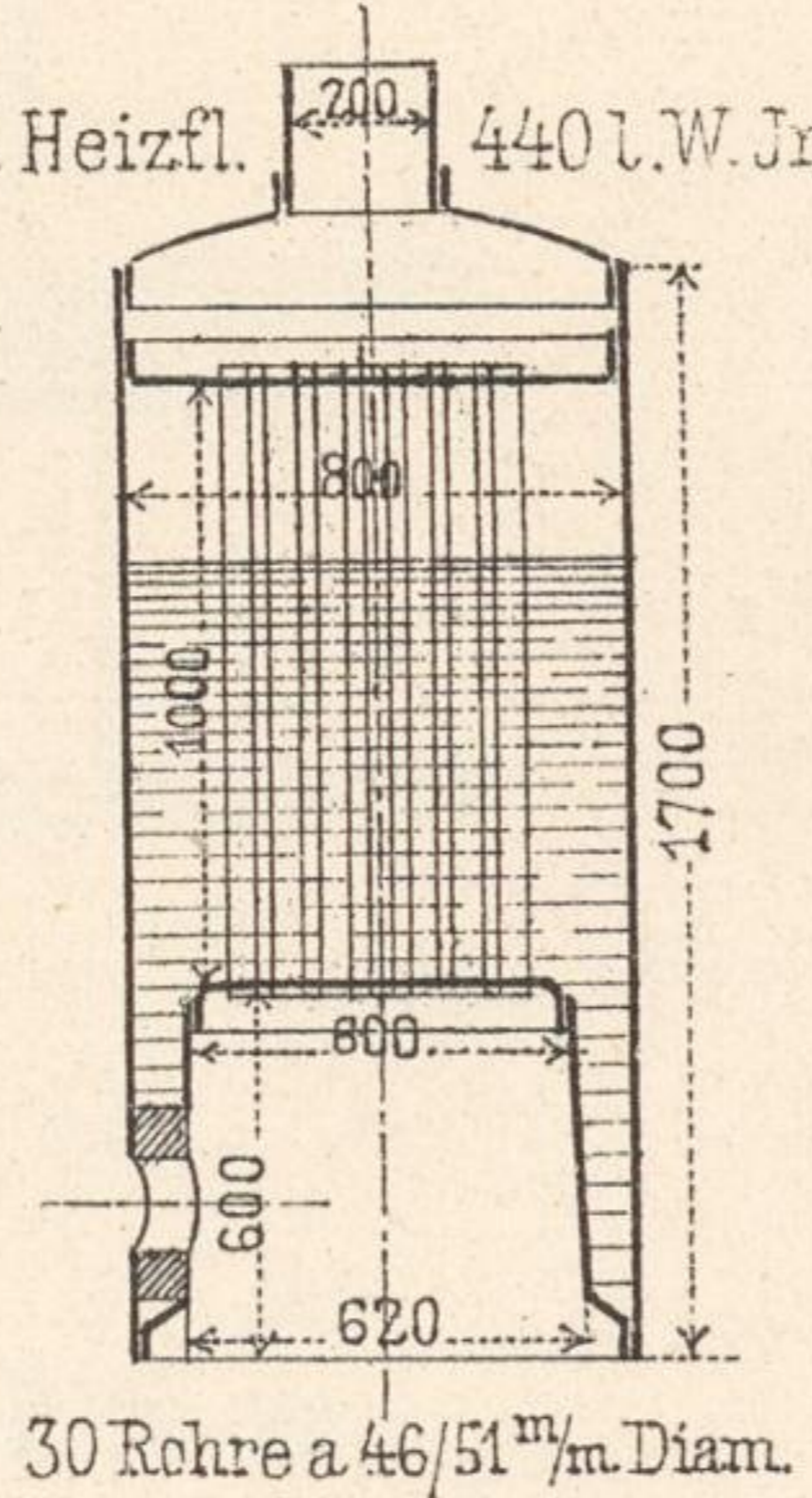
4.3 m<sup>2</sup> Heizfl. 60 l. W. Jnh.



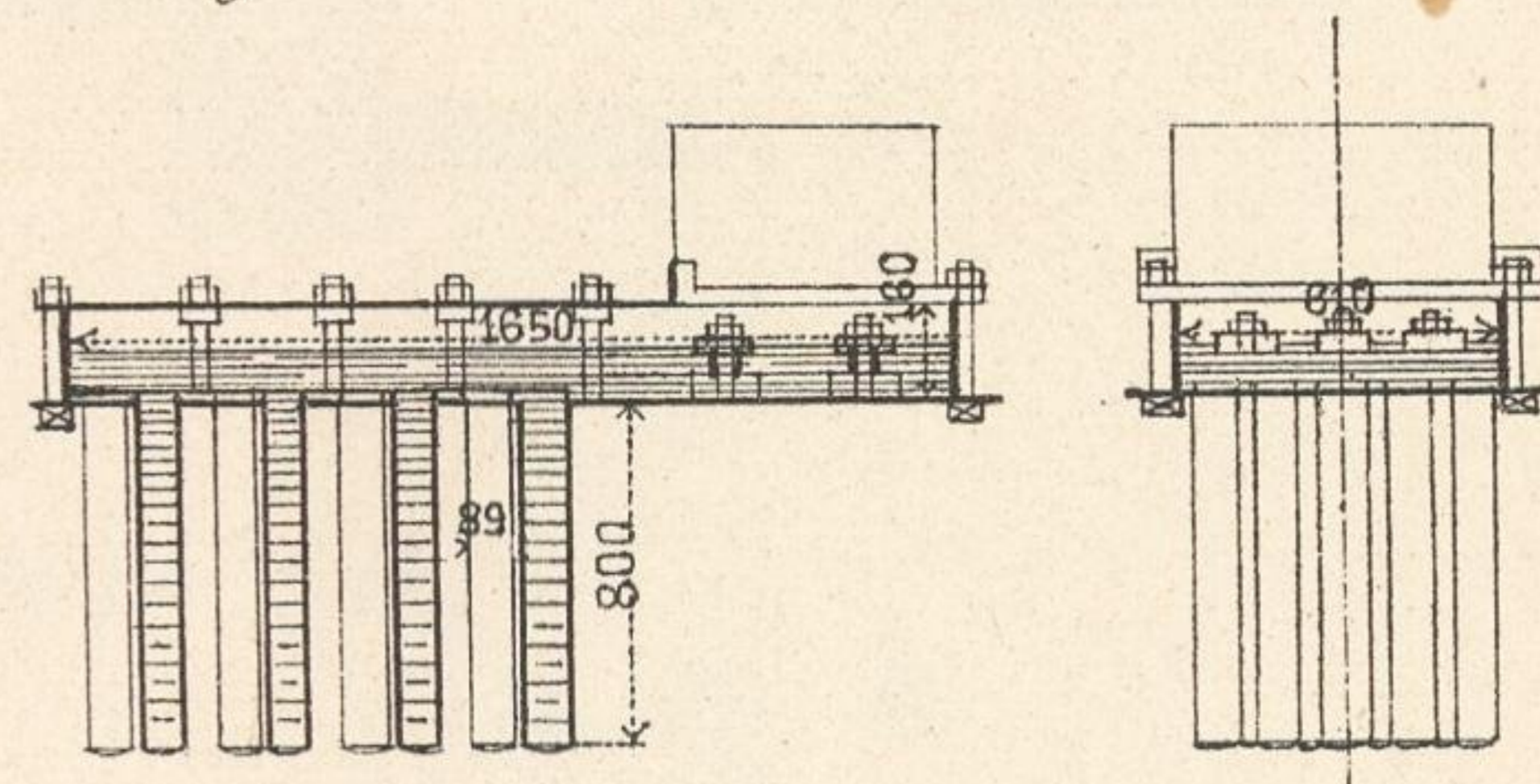
3.6 m<sup>2</sup> Heizfl. 260 l. W. Jnh.



5.7 m<sup>2</sup> Heizfl. 440 l. W. Jnh.

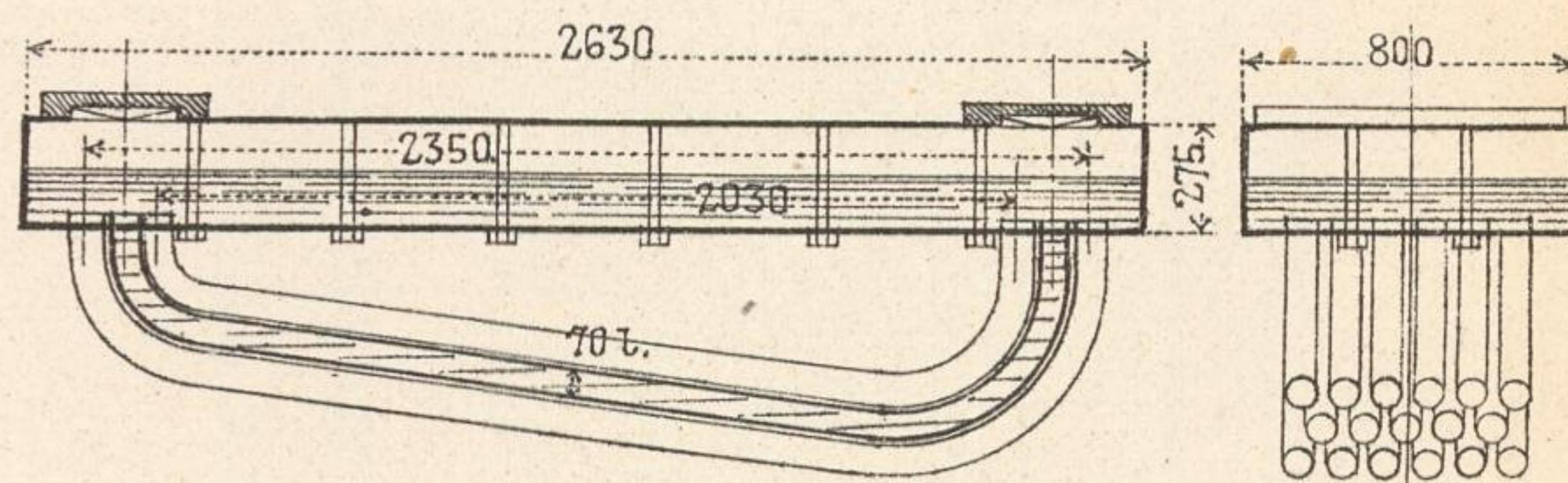


System Friedrich & Jaffe's Nchf.



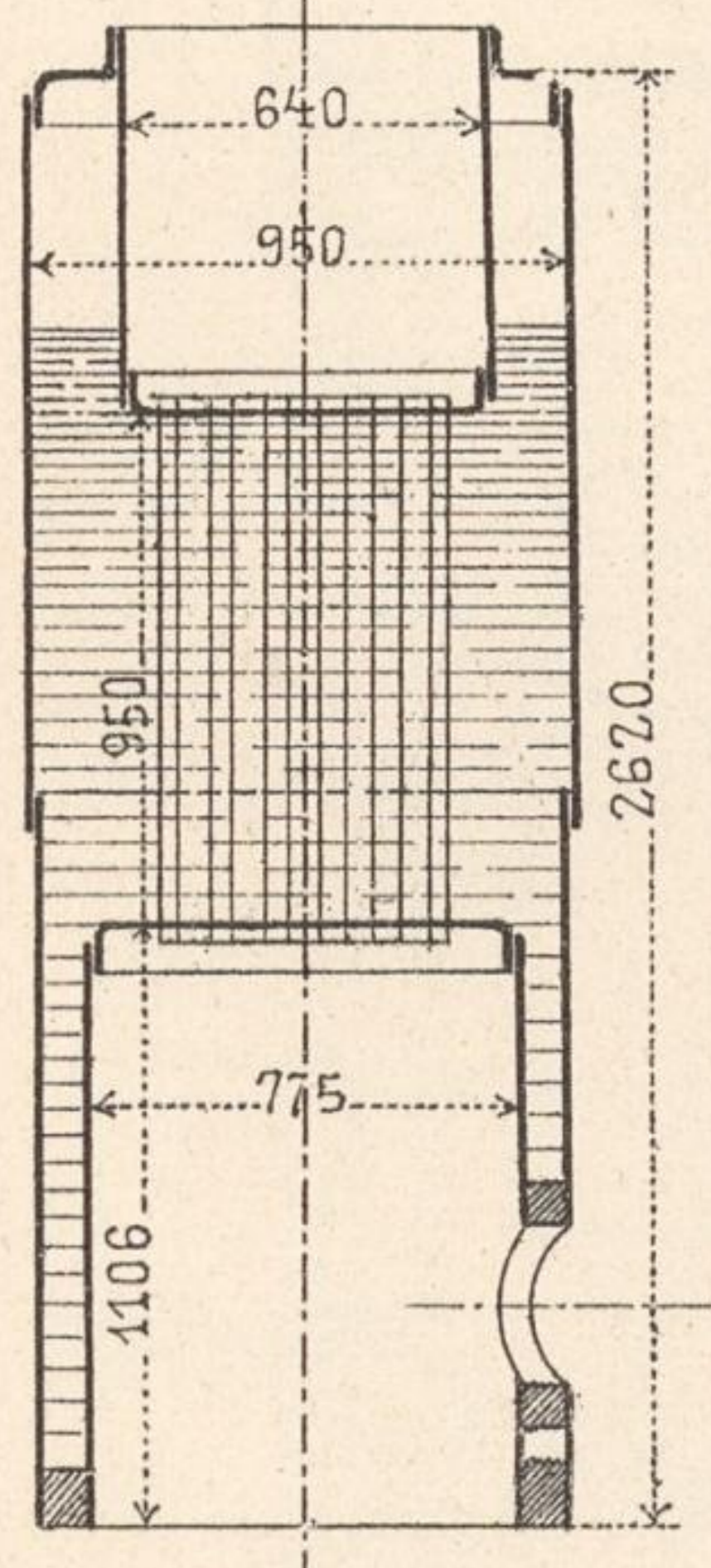
8.4 m<sup>2</sup> Heizfläche, 244 l. Wasserinhalt

System Hoffmeister

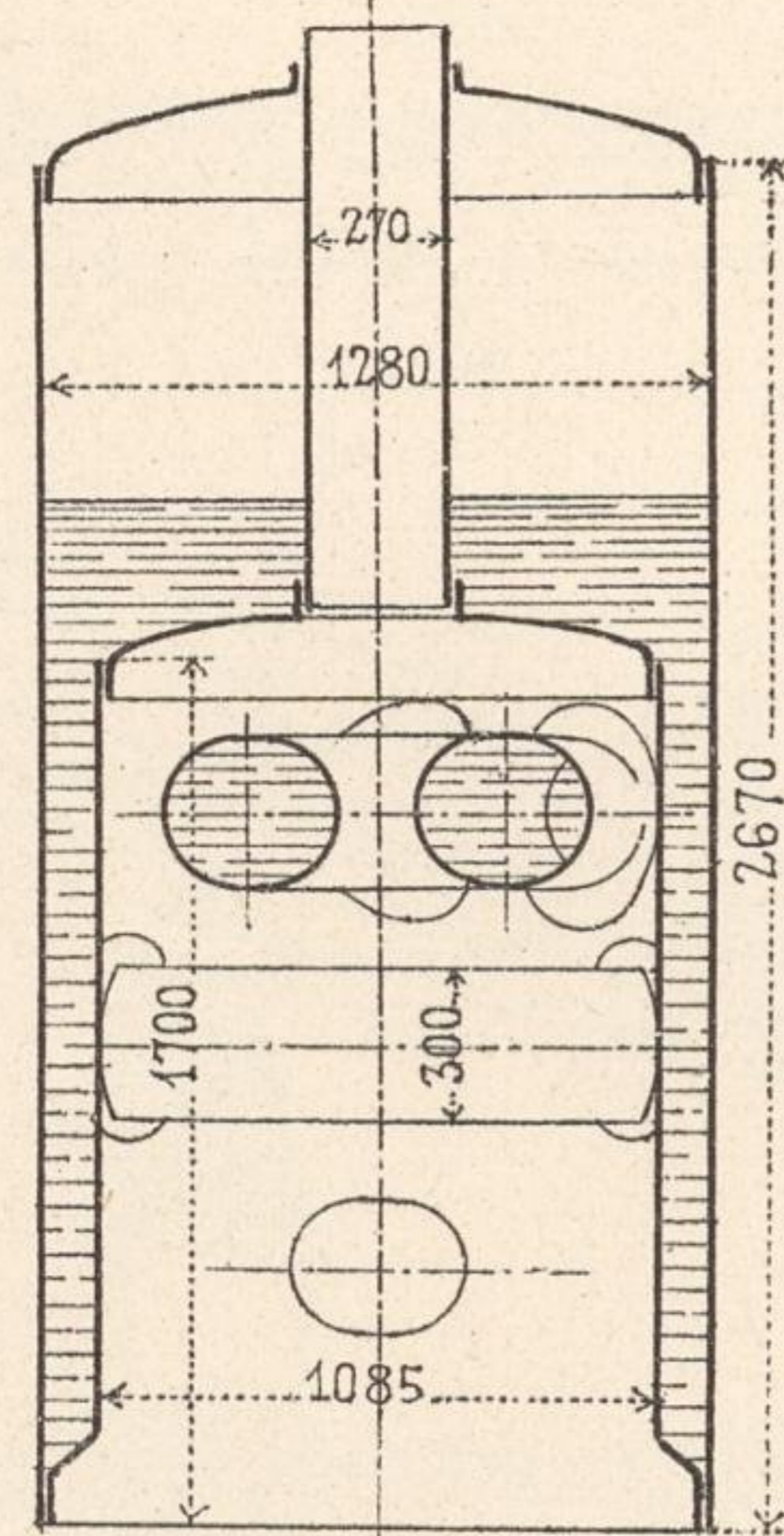


10 m<sup>2</sup> Heizfläche, 400 l. Wasserinhalt

9.8 m<sup>2</sup> Heizfl. 1000 l. W. Jnh.  
39 Röhre à 46/51<sup>mm</sup> Diam.



12.1 m<sup>2</sup> Heizfl. 950 l. W. Jnh.



5 m<sup>2</sup> Heizfl. 470 l. W. Jnh.  
9 Röhre à 70/76<sup>mm</sup> Diam.

