

Abb. 14. Gutshof in Otterbach (Westpfalz). (Hierzu Grundriß Abb. 13.)

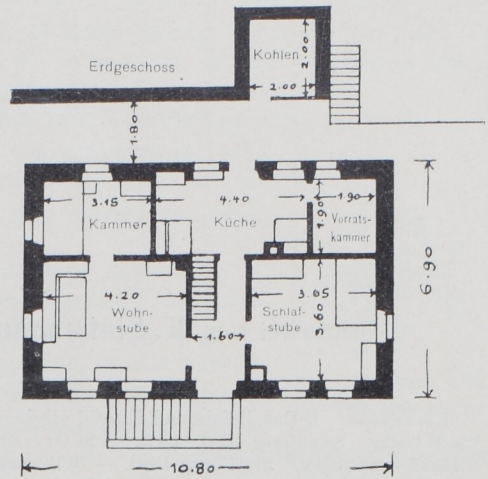


Abb. 16a. Erdgeschoß.

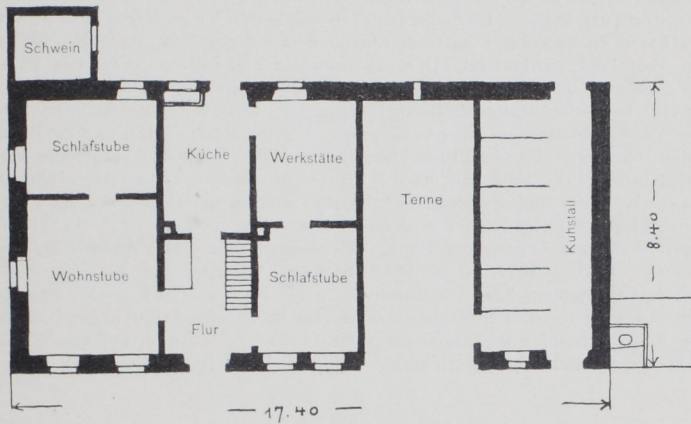


Abb. 15a. Erdgeschoß.

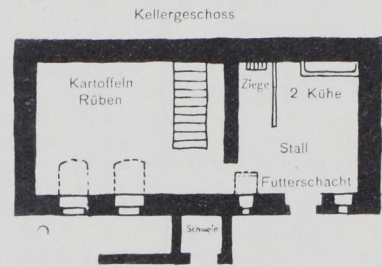
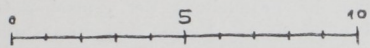


Abb. 16b. Keller.

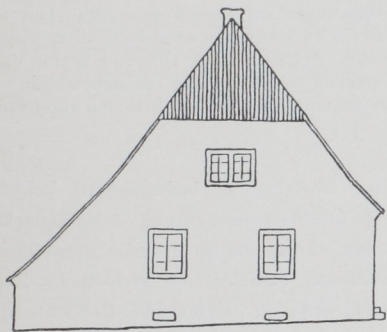


Abb. 15b. Vordere Giebelseite.

Abb. 15a, b, c, Bauernhaus in Hohenecken, ca. 1750 (Westpfalz).

Abb. 16a, b, c, d. Ackererhaus in Otterbach ca. 1800. (Westpfalz.)



Abb. 16c. Hoffassade.

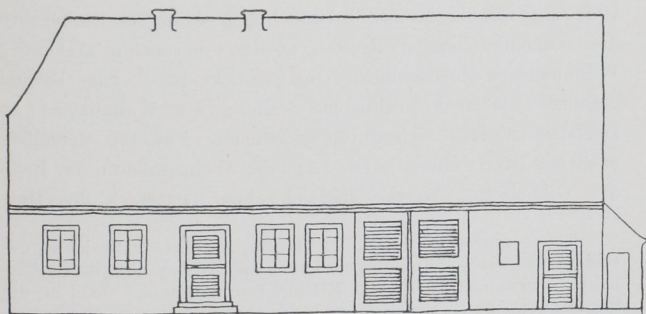


Abb. 15c. Hoffassade.

Das Bauernhaus im Deutschen Reiche.

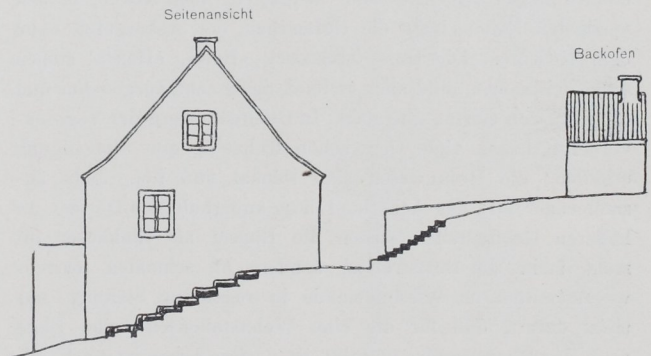


Abb. 16d.