

Abb. 2. Längenschnitt.

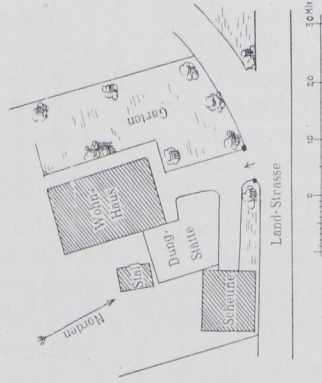


Abb. 3. Lageplan.

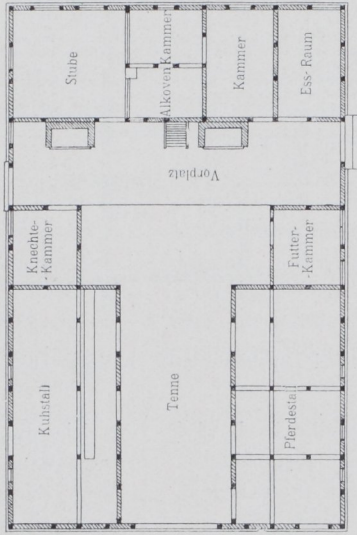


Abb. 4. Grundriß.

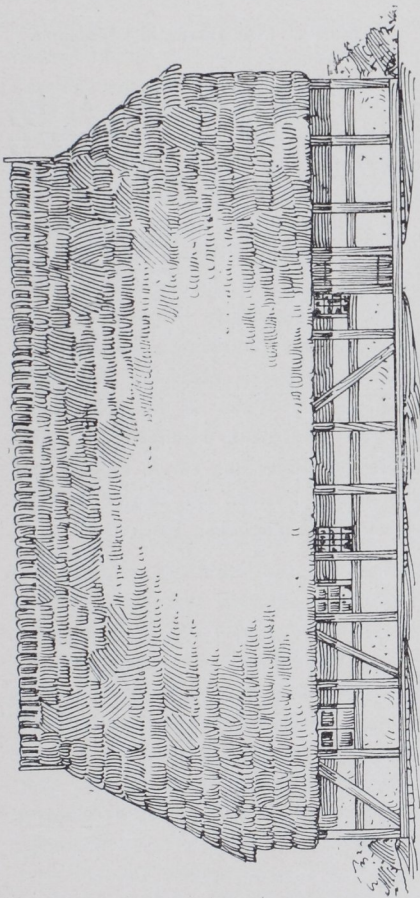


Abb. 1. Seitenansicht.

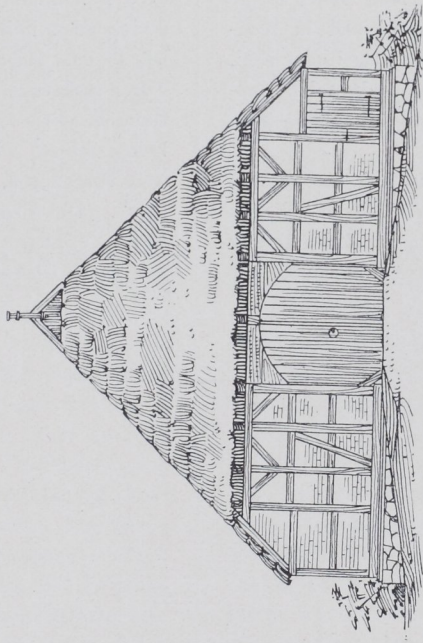


Abb. 5. Giebelansicht.

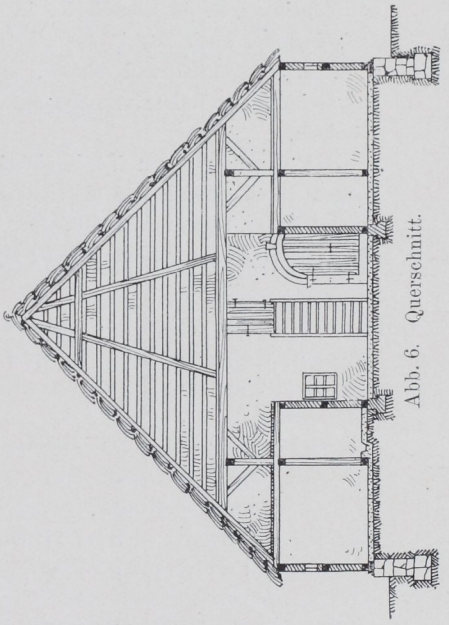


Abb. 6. Querschnitt.

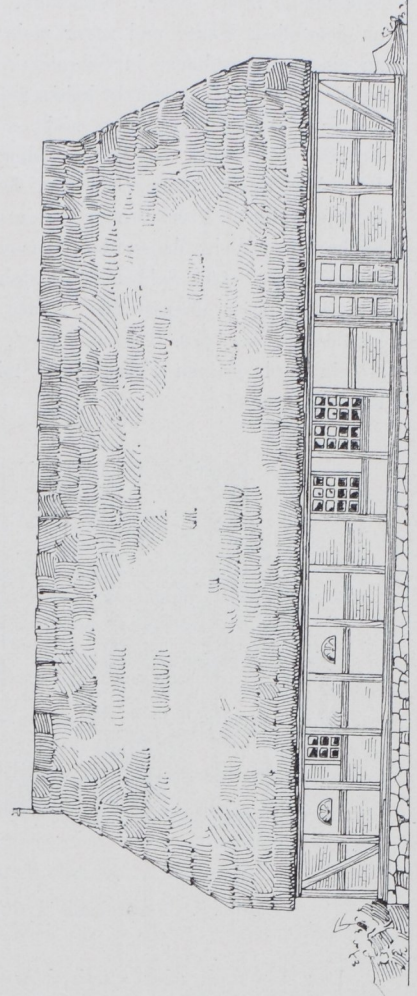


Abb. 7. Längsansicht.

Abb. 3-7. Gehöft und Bauernhaus in Buchhorst bei Lauenburg a. E.