

Abb. 7. Lienzingen.
Steinerner Schiebladen.

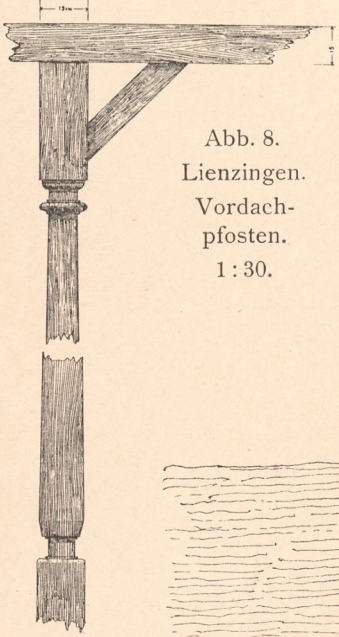


Abb. 8. Lienzingen.
Vordach-
pfosten.
1:30.

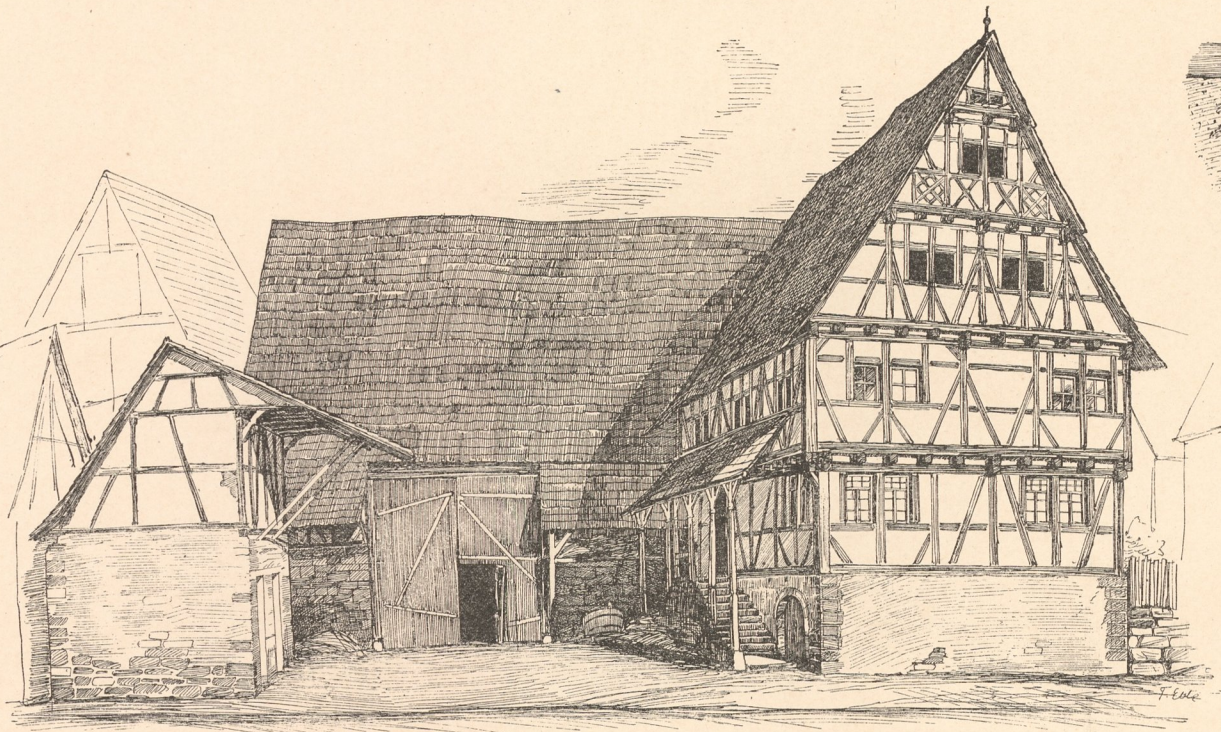


Abb. 1. Bauerngehöft in Lienzingen.

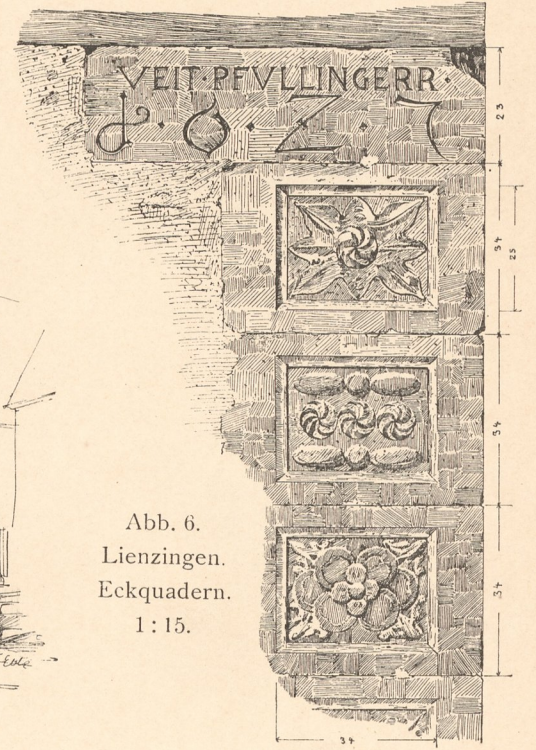


Abb. 6.
Lienzingen.
Eckquadern.
1:15.

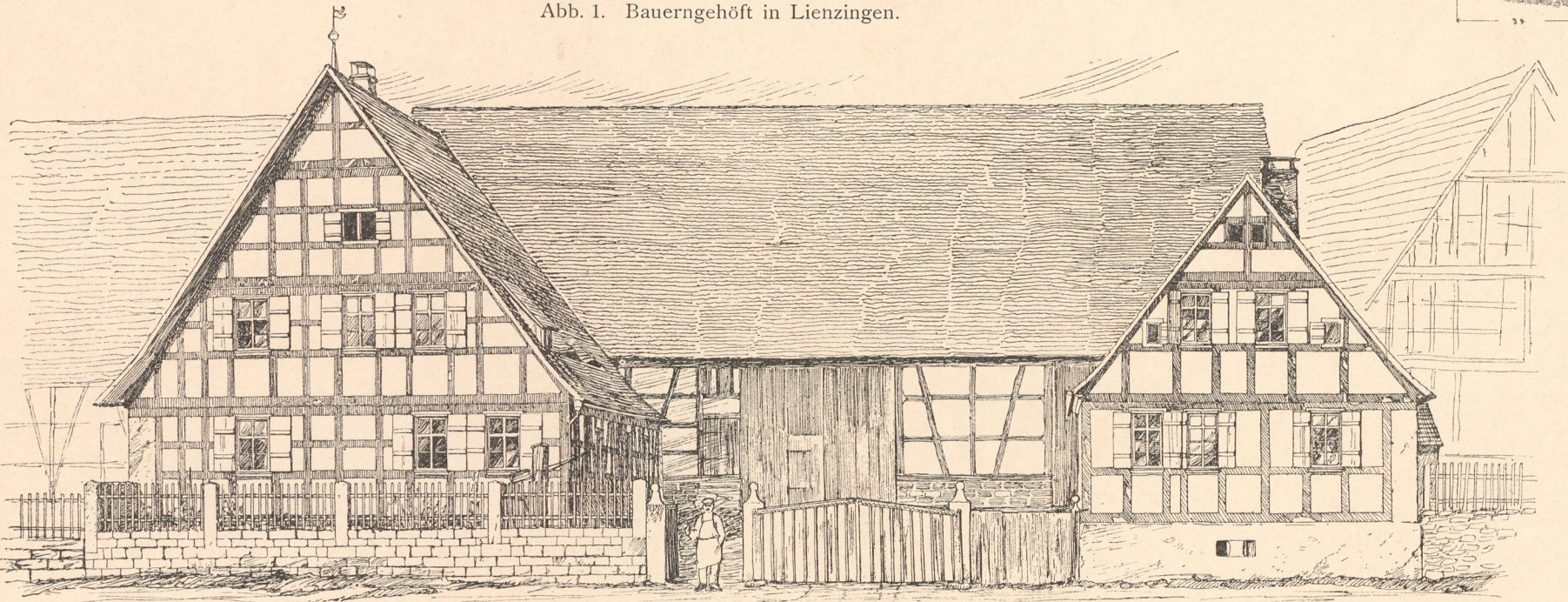


Abb. 2. Bauerngehöft in Sechselbach.

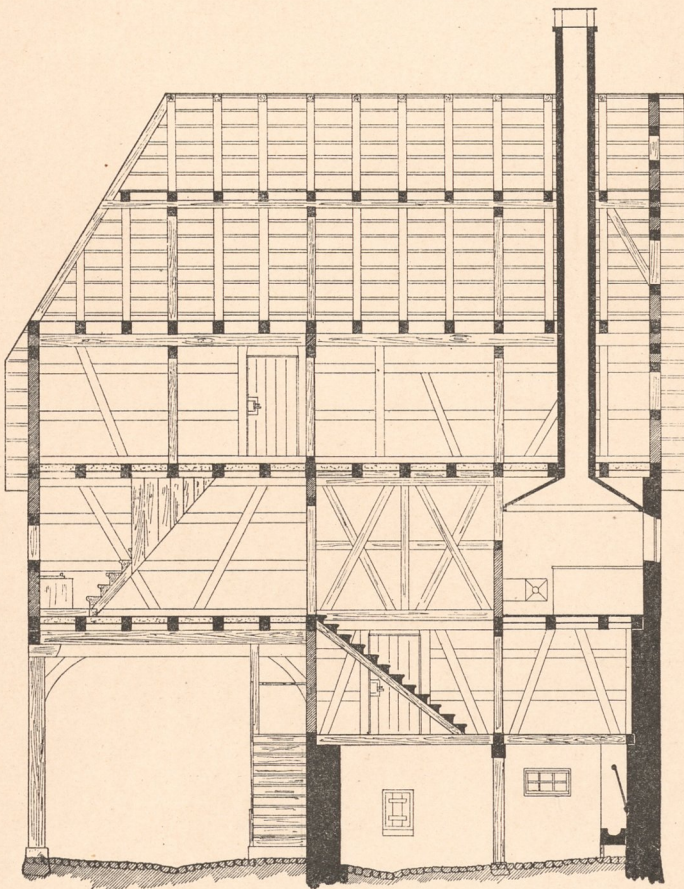


Abb. 4. Schützingen. Schnitt A B.

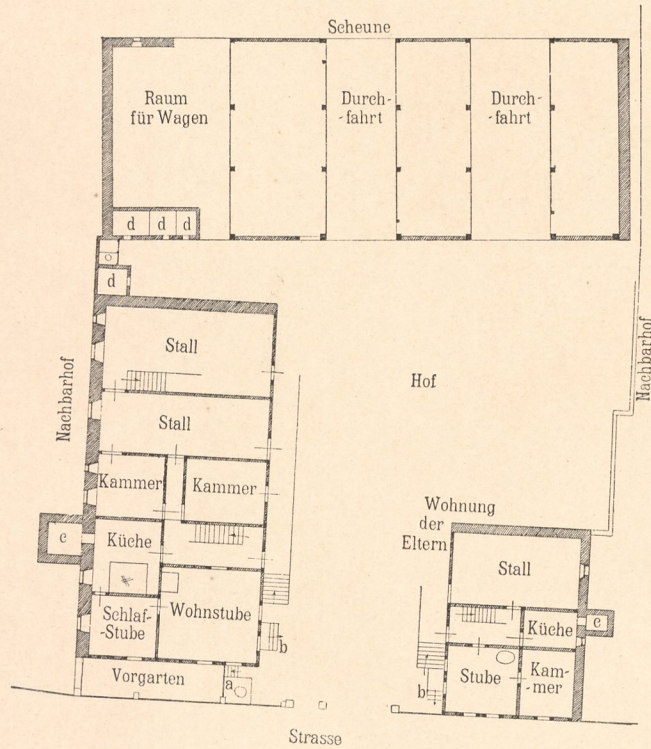


Abb. 3. Sechselbach.

Masstab zu Abb. 3.

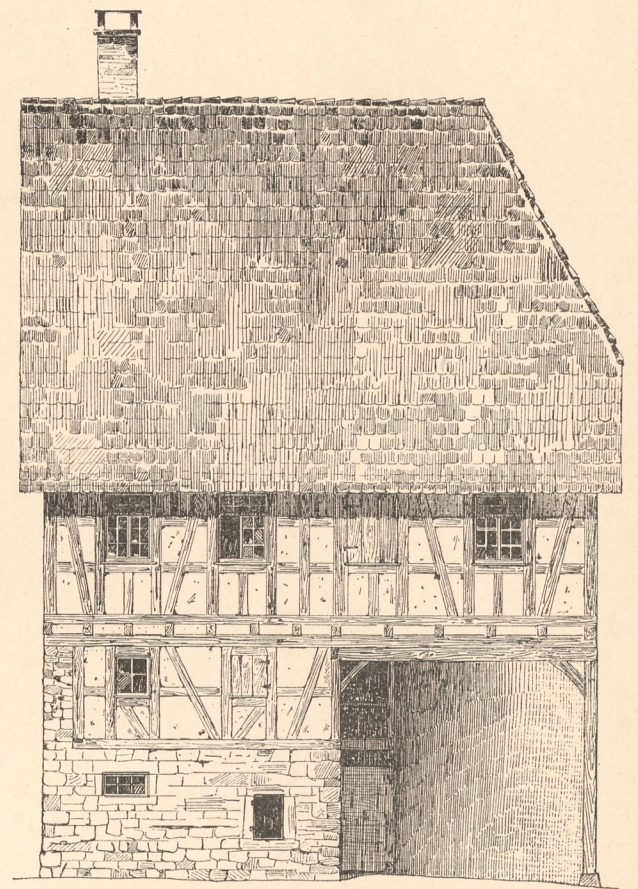


Abb. 5. Schützingen. Strassenansicht.

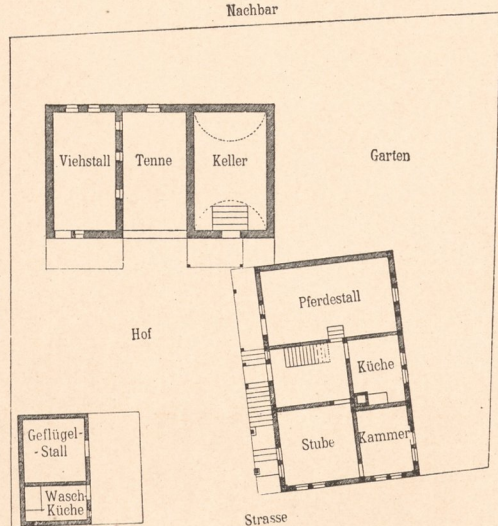


Abb. 9. Lienzingen.

Masstab zu Abb. 9.

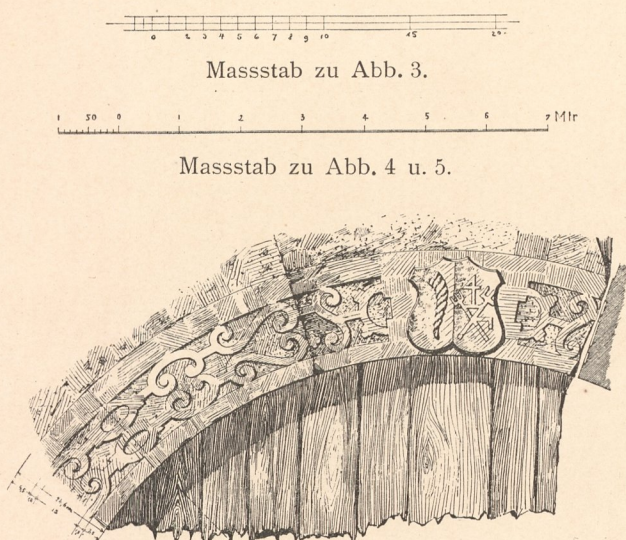


Abb. 10. Lienzingen.
Thürbogen. 1:15.

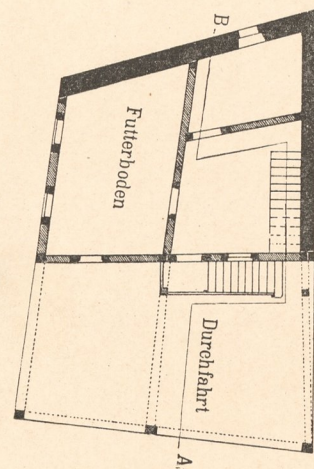


Abb. 11. Haus Hellmann in Schützingen.
Zwischengeschoss.

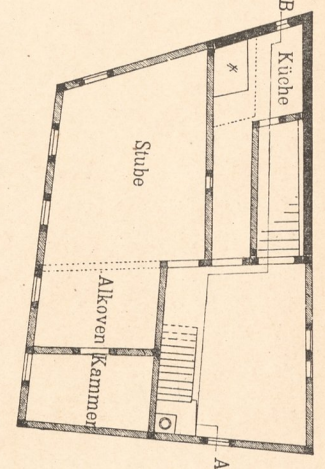


Abb. 12. Haus Hellmann in Schützingen.
Obergeschoss.

Masstab zu Abb. 11 u. 12.

Aufgen. von F. Eble u. O. Pfisterer.

Zinkhochätzung von Albert Frisch, Berlin W.

