

Abb. 1. Strümpfelbach. Querschnitt.

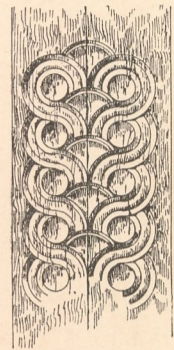


Abb. 6. Strümpfelbach. Detail.

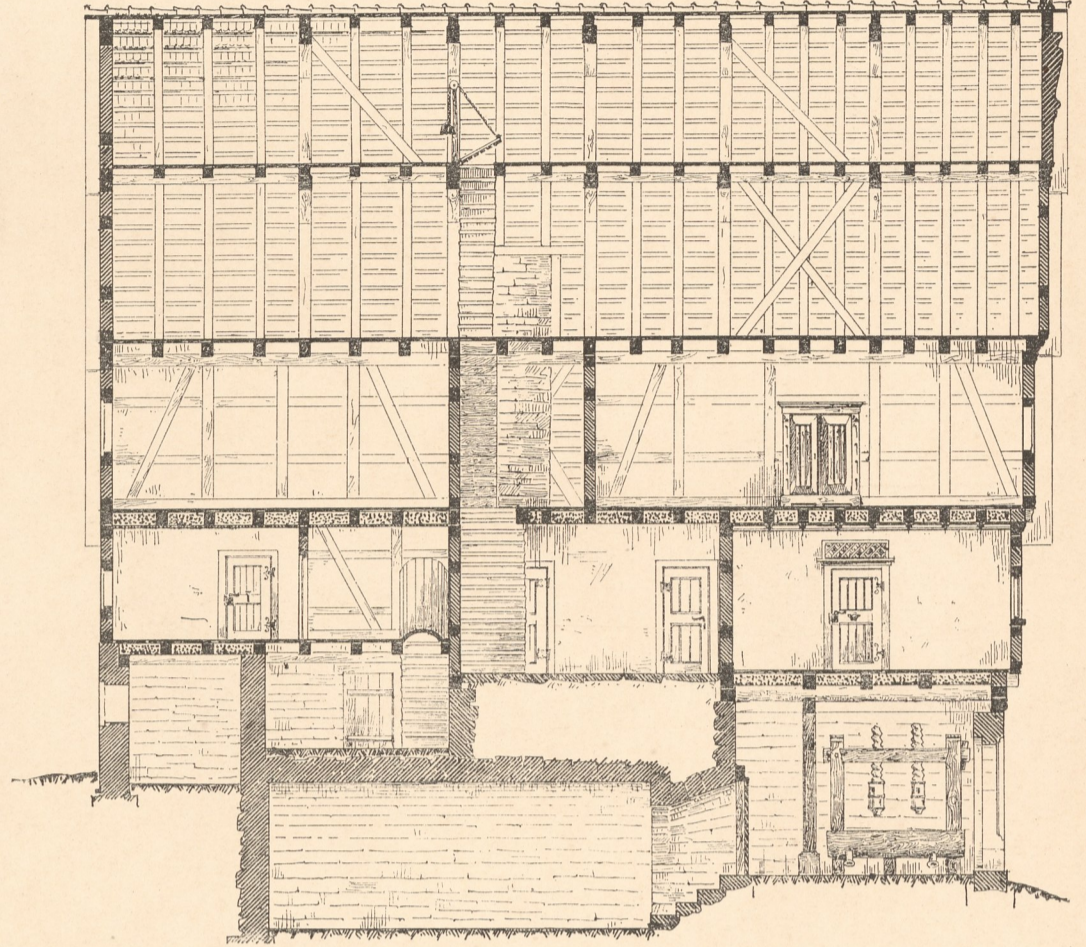


Abb. 2. Strümpfelbach. Längenschnitt.

1 0 5 m

Massstab zu Abb. 1-3.

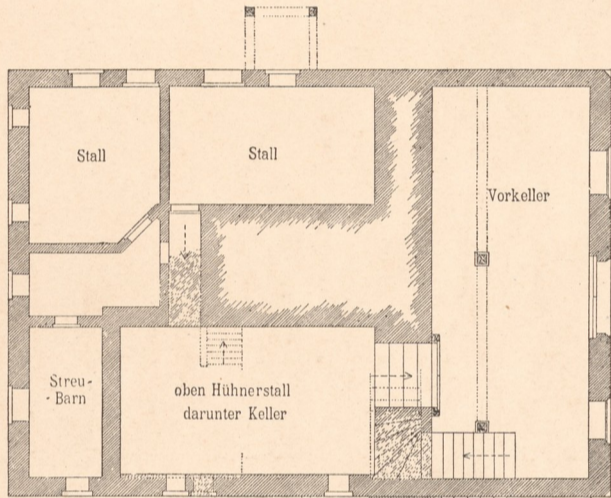


Abb. 4. Strümpfelbach. Erdgeschoss.



Abb. 7. Profil bei B in Abb. 9.

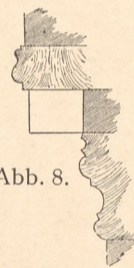


Abb. 8. Profil bei A in Abb. 9.

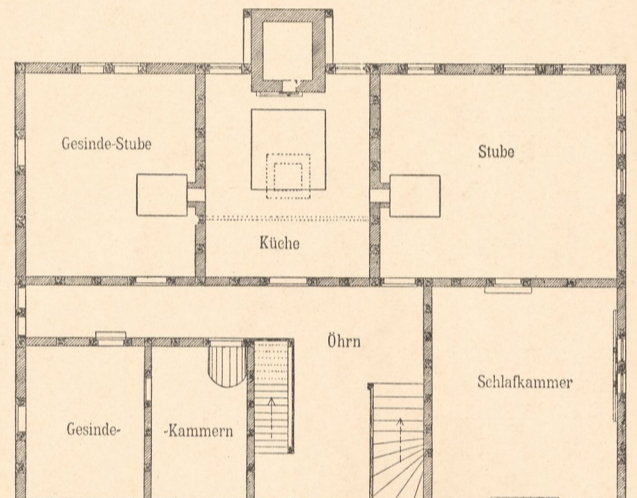


Abb. 5. Strümpfelbach. Hauptgeschoss.

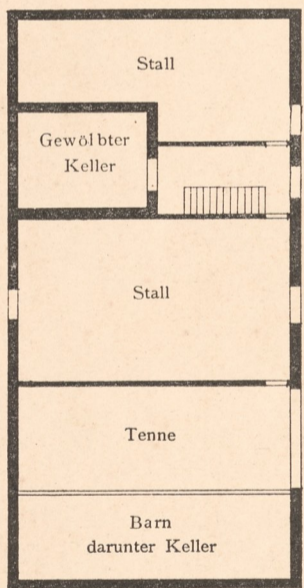


Abb. 10. Riethem O.-A. Urach. Erdgeschoss.

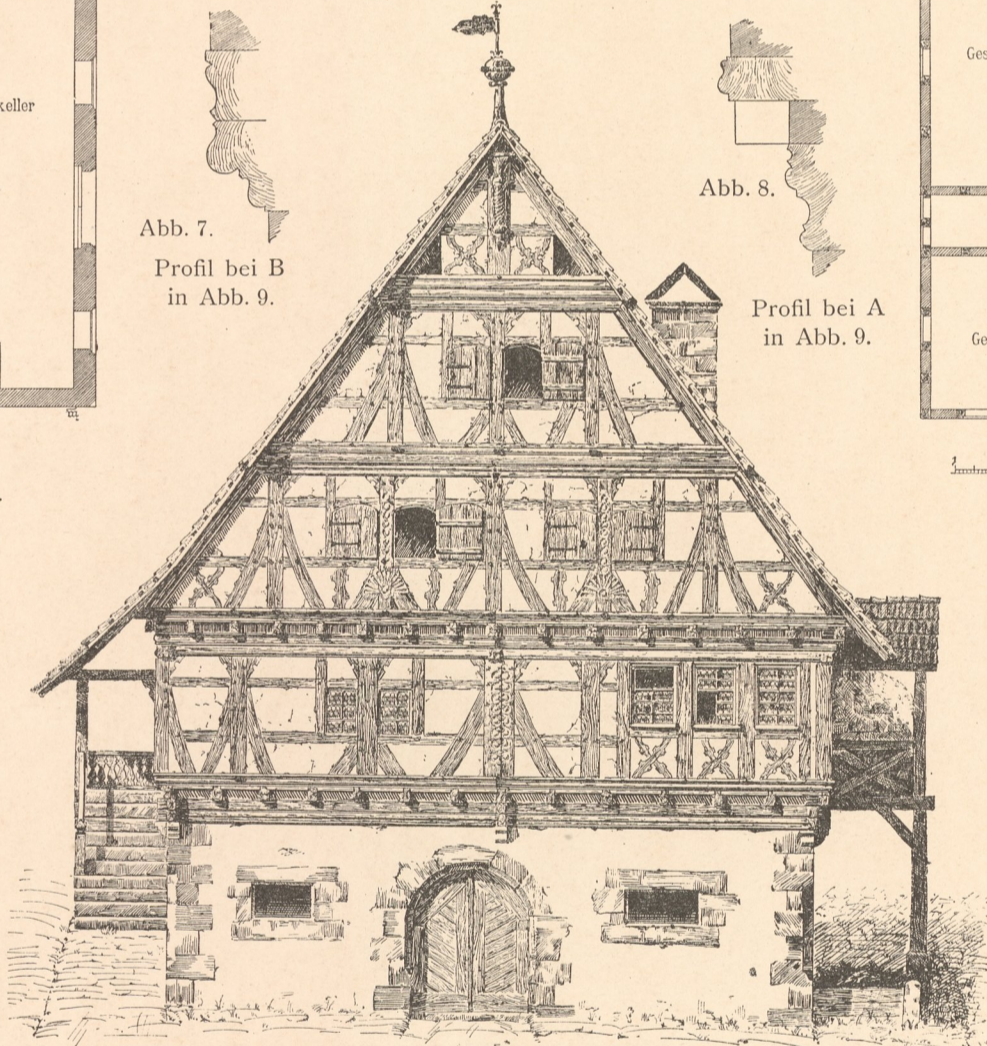


Abb. 3. Weingärtnerhaus in Strümpfelbach (O.-A. Waiblingen) von 1606.

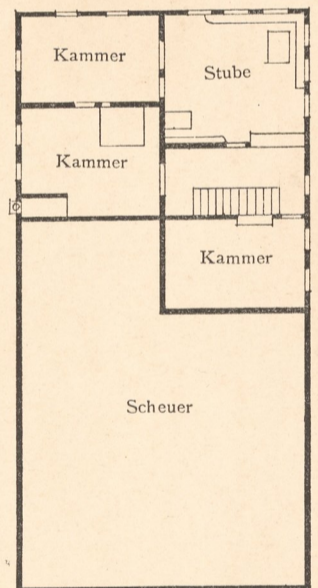


Abb. 11. Riethem O.-A. Urach. I. Stock.

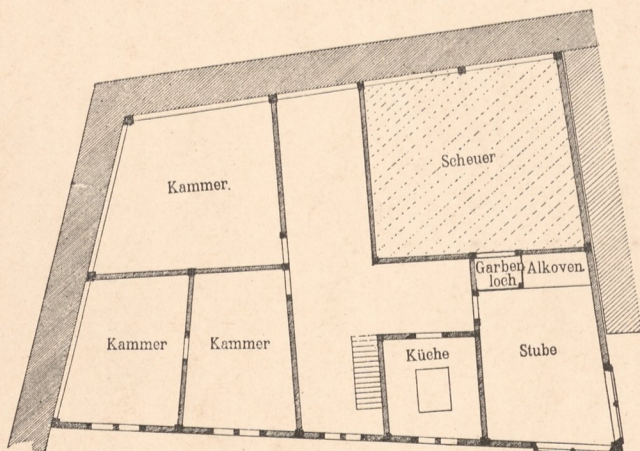


Abb. 13. Sindelfingen O.-A. Böblingen. II. Obergeschoss.

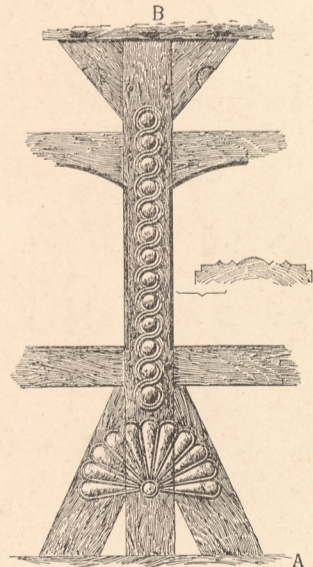


Abb. 9. Strümpfelbach. Detail.

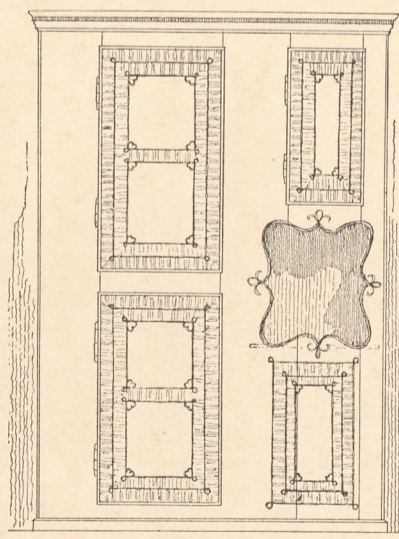


Abb. 12. Riethem. Wandschrank (roth, schwarz und weiss auf braunem Grund bemalt).

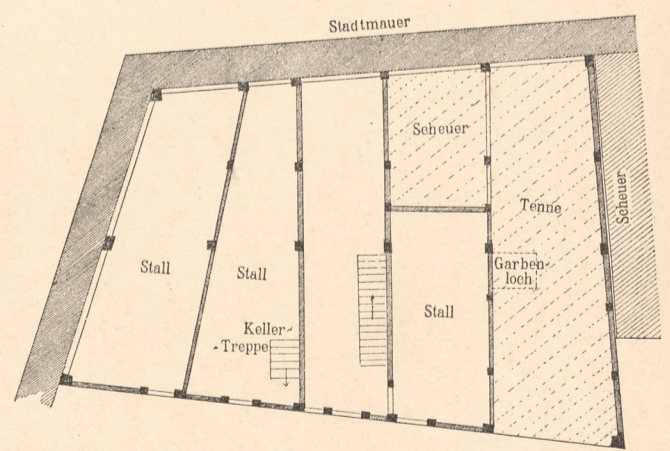


Abb. 14. Sindelfingen O.-A. Böblingen. Erdgeschoss.

0 5 10 Mr.

0 1 Mr.

0 5 10 Mr.

Aufgen. u. gez. von M. Mayer, F. Eble u. O. Pfisterer.

Zinkhochätzung von Albert Frisch, Berlin W.

Verlag von Gerhard Kühtmann, Dresden.

Inventar
Abb. E
Nr. 1204

