



Abb. 1. Kürnbach, Längsansicht.

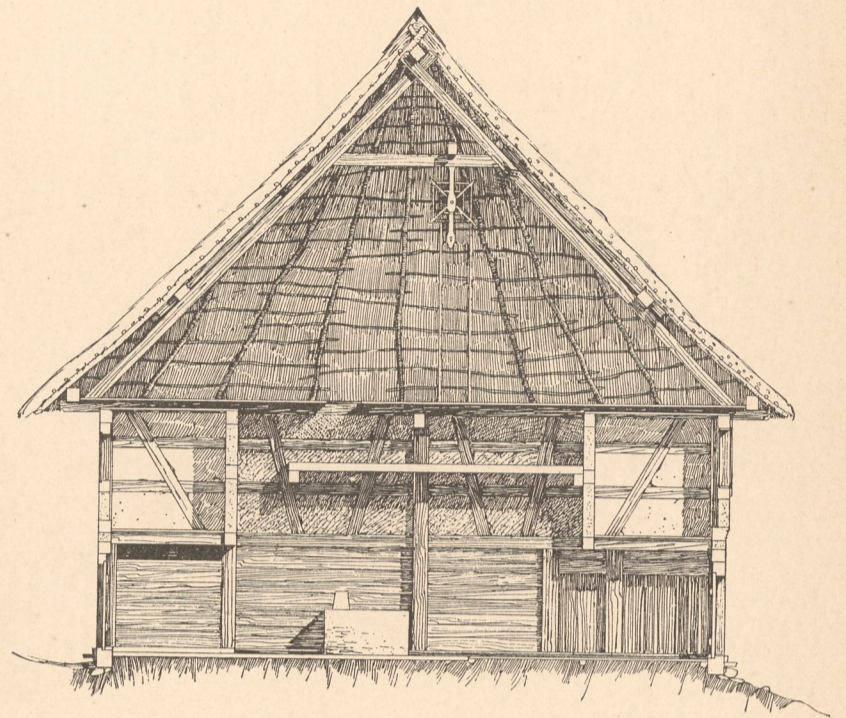


Abb. 2. Kürnbach, Querschnitt A B.

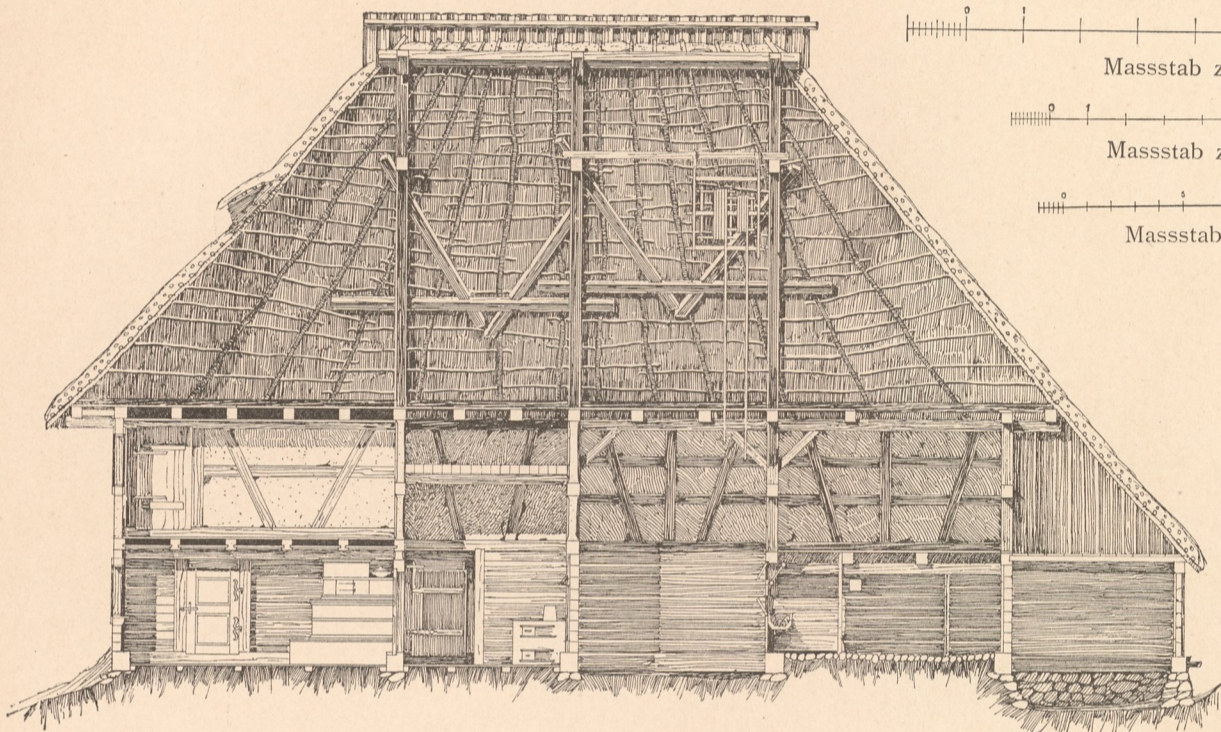


Abb. 3. Kürnbach, Längenschnitt.

Masstab zu Abb. 1—3.

Masstab zu Abb. 4—6.

Masstab zu Abb. 7.

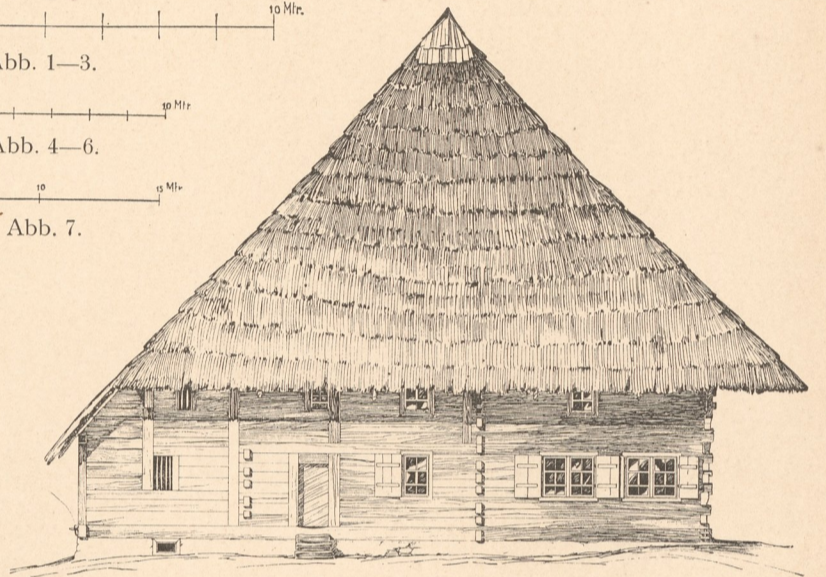


Abb. 4. Haslach, Seitenansicht.

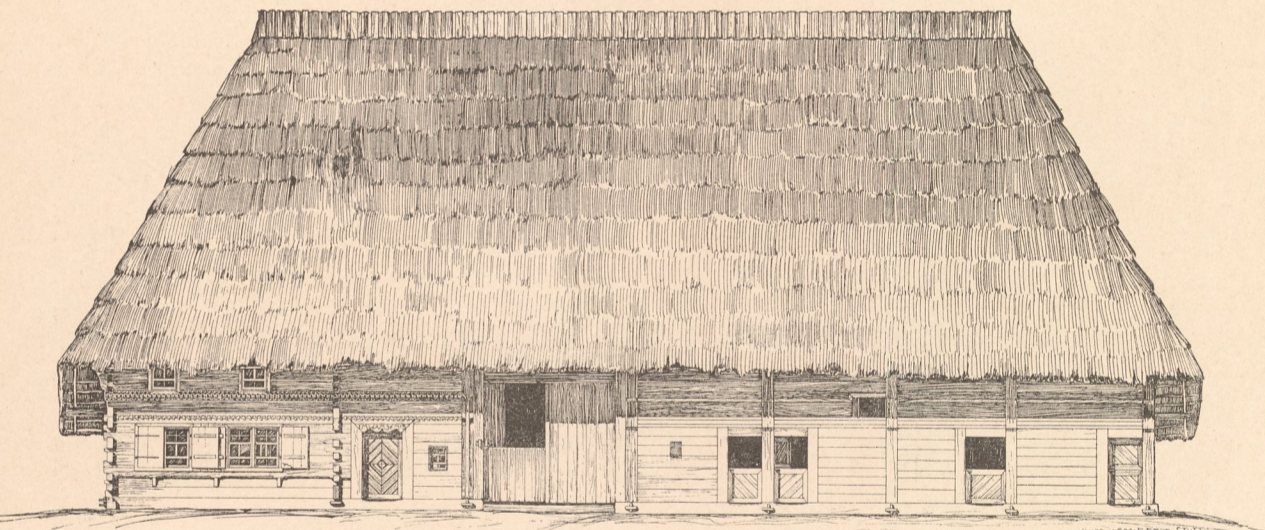


Abb. 5. Haslach, Längsansicht.

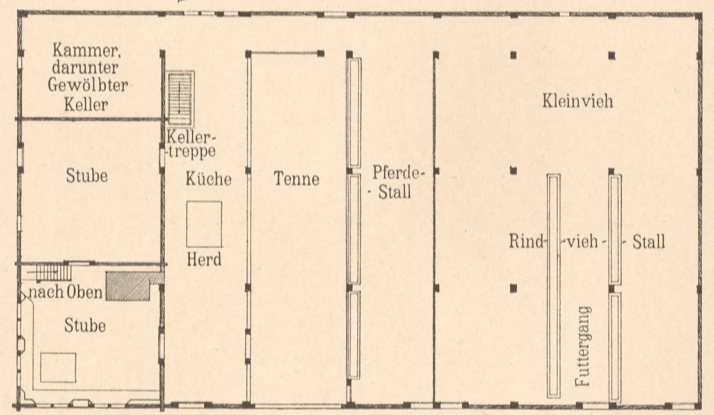


Abb. 7. Haslach, Grundriss.

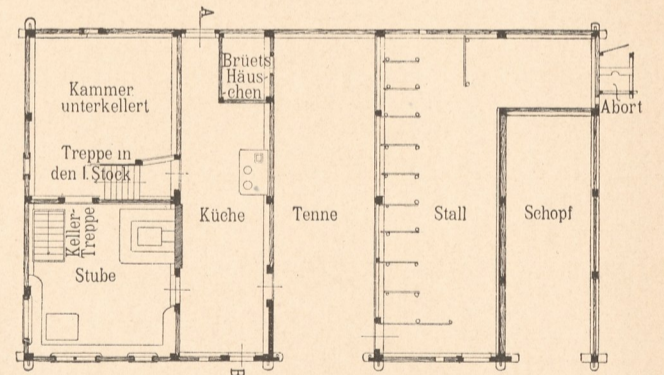


Abb. 8. Kürnbach, Grundriss

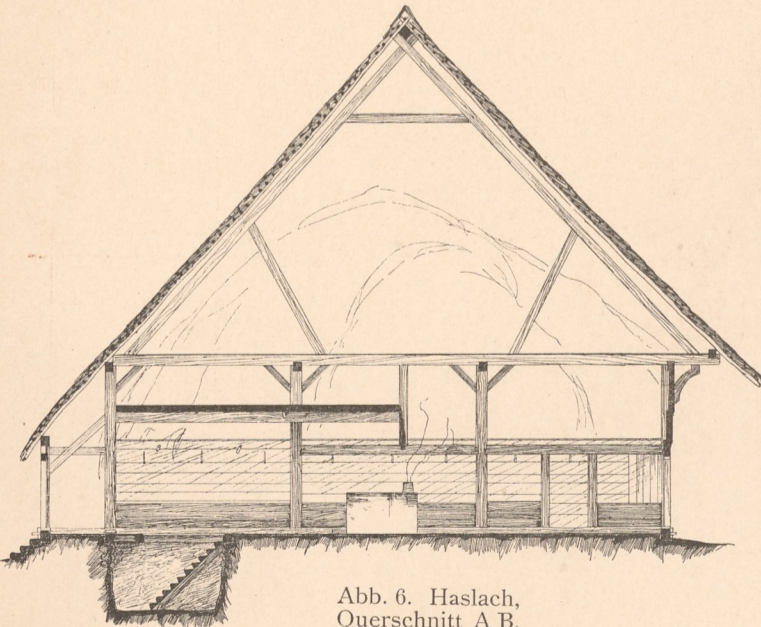


Abb. 6. Haslach, Querschnitt A B.

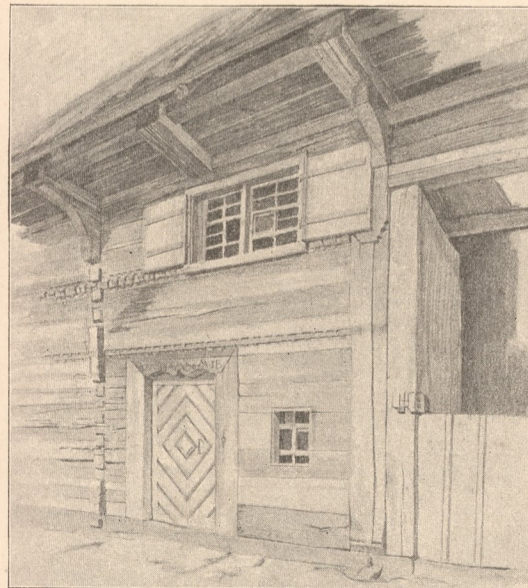


Abb. 9. Haslach.

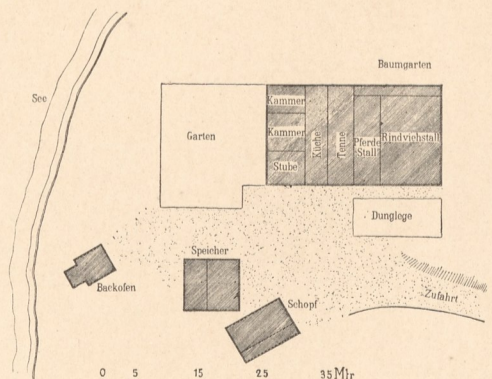


Abb. 10. Haslach, Lageplan.

Aufgen. u. gez. von F. Eble.

Zinkhochätzung von Albert Frisch, Berlin W.

Verlag von Gerhard Kühtmann, Dresden.

Antiquar
Abt. E
Nr. 1204

