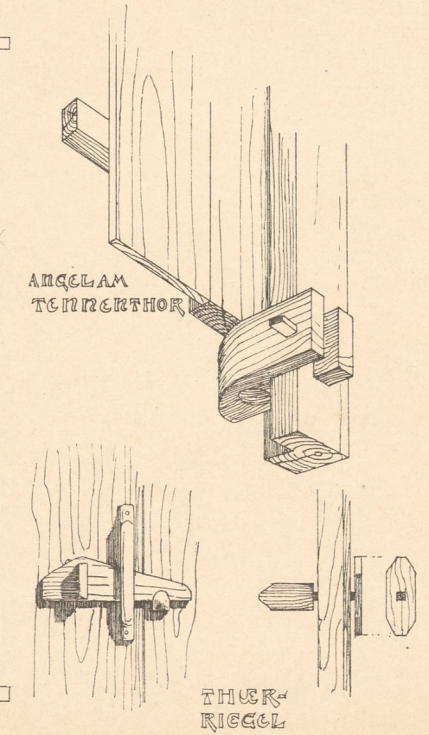
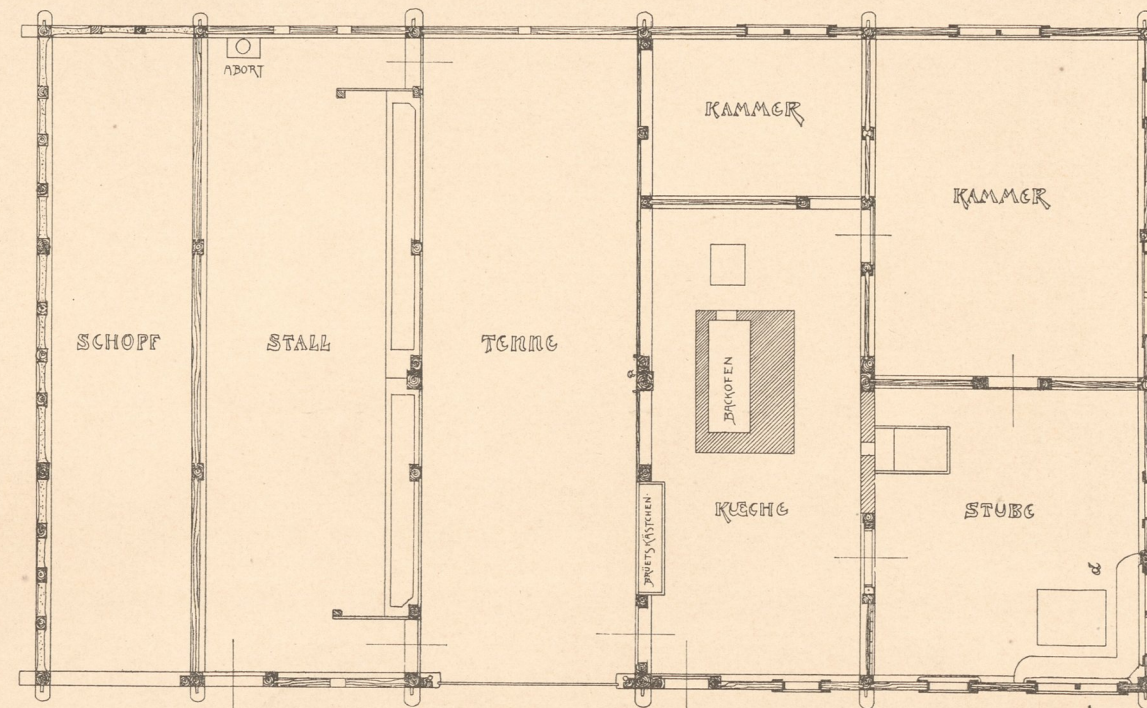
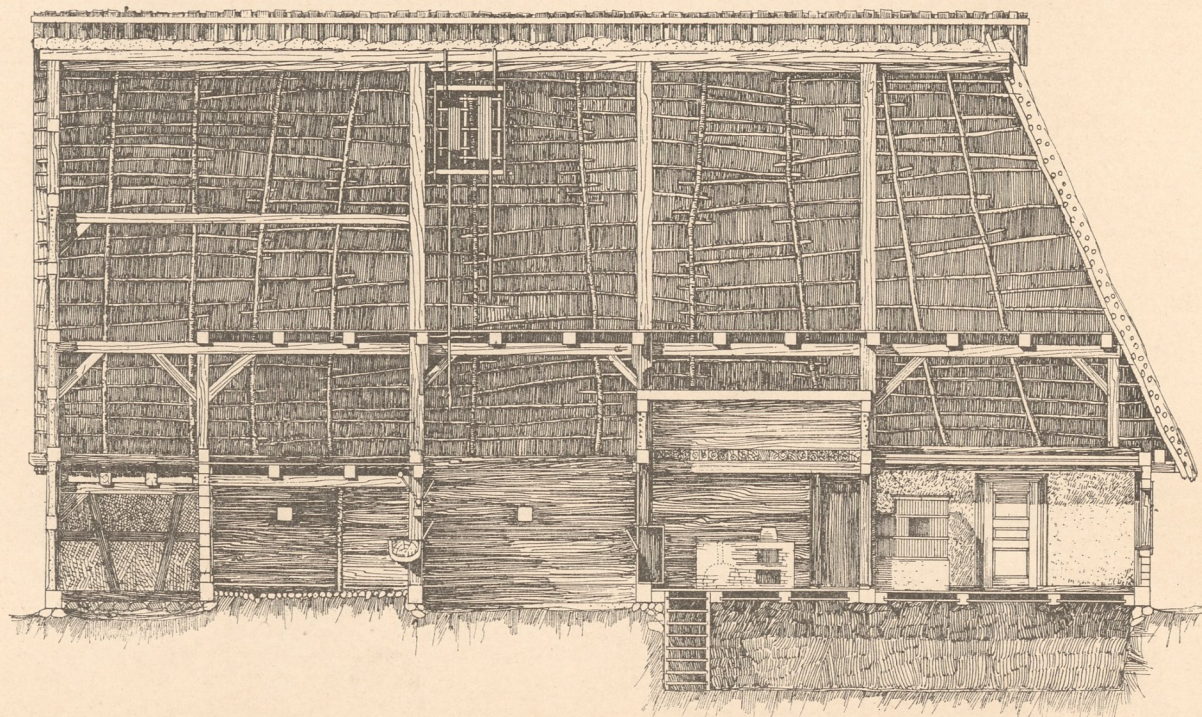
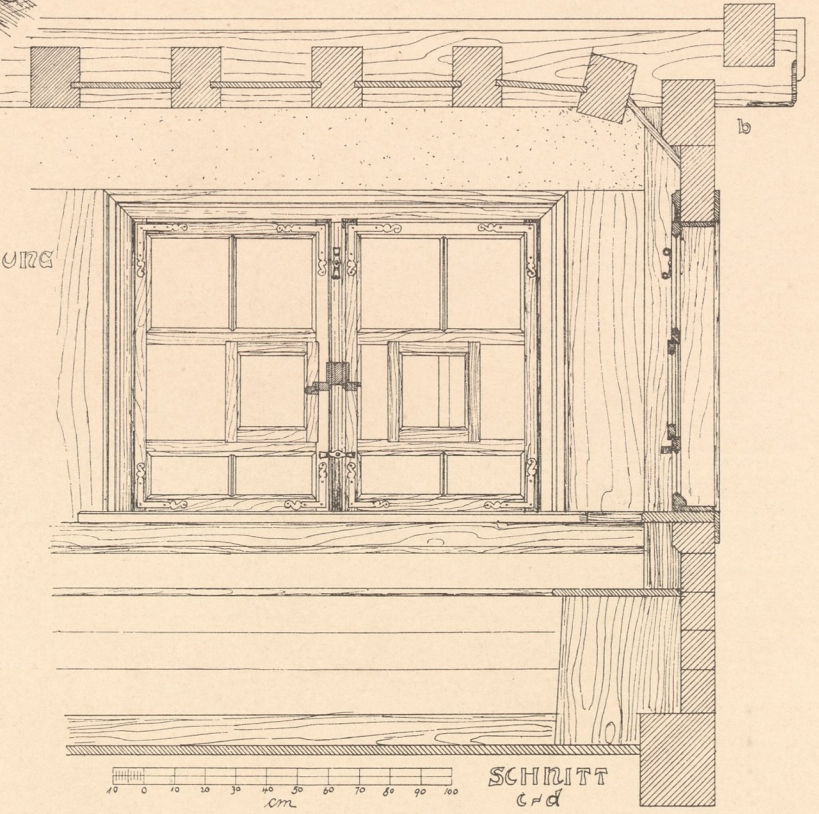
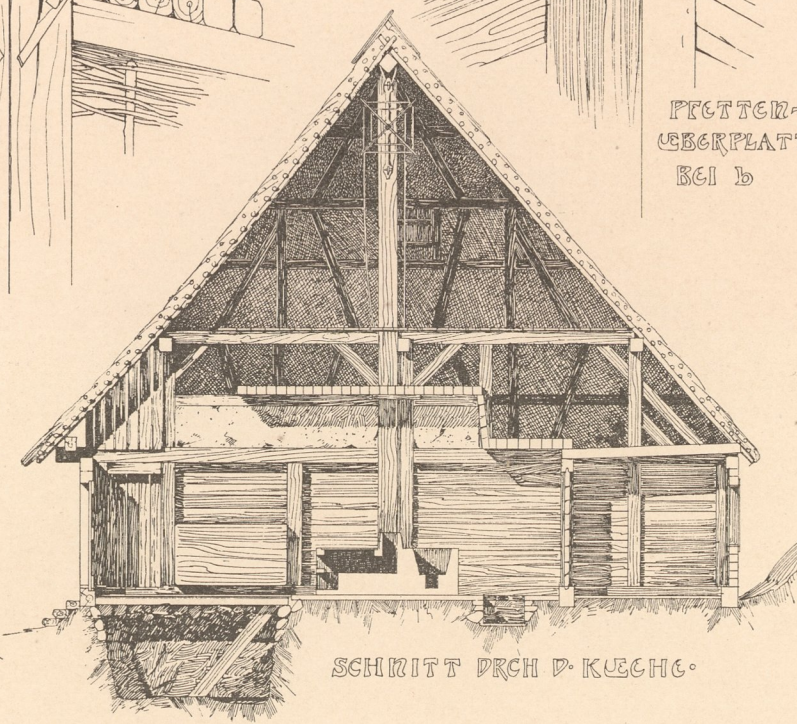
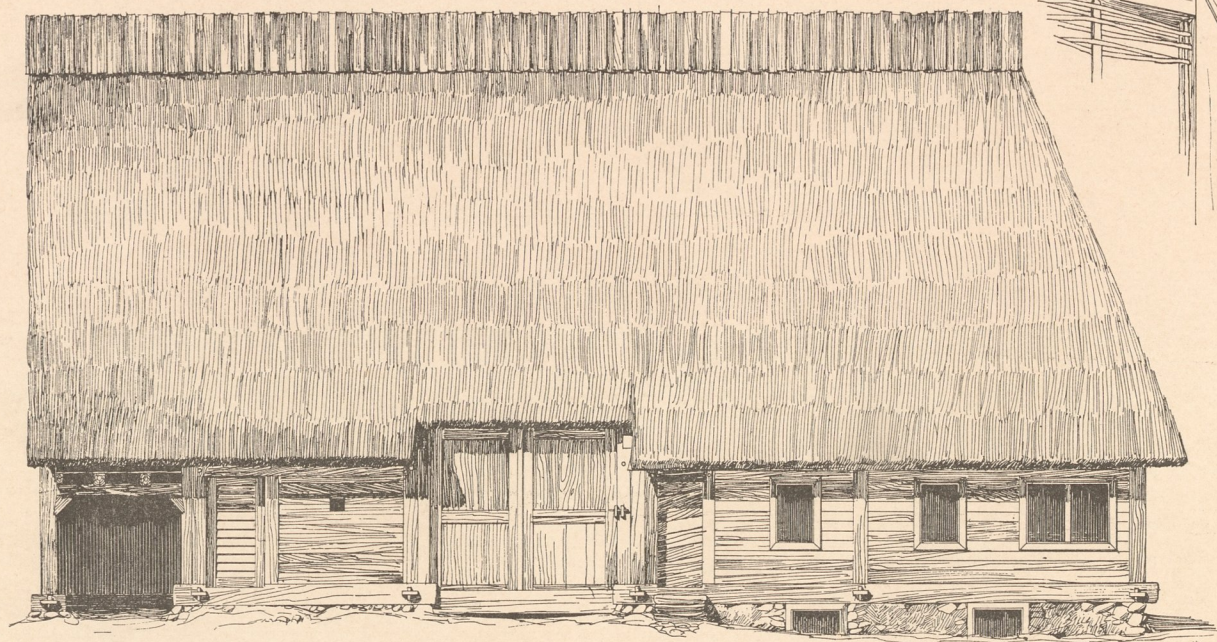
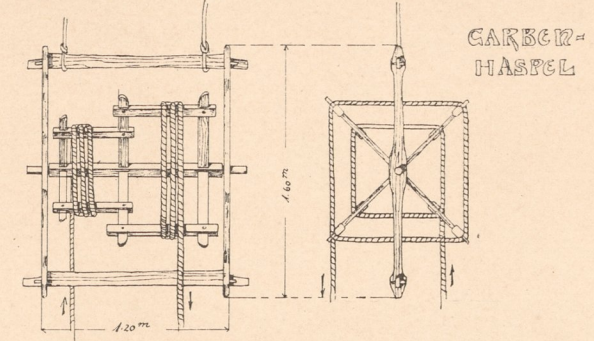
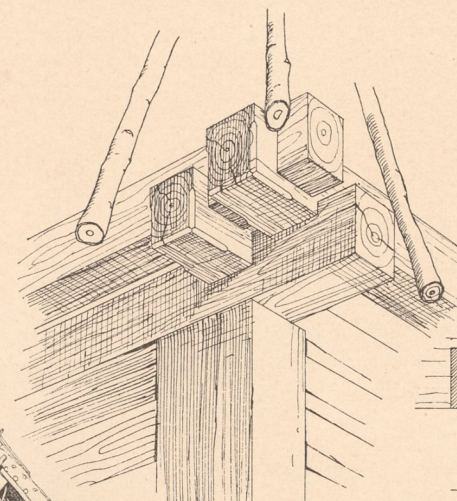
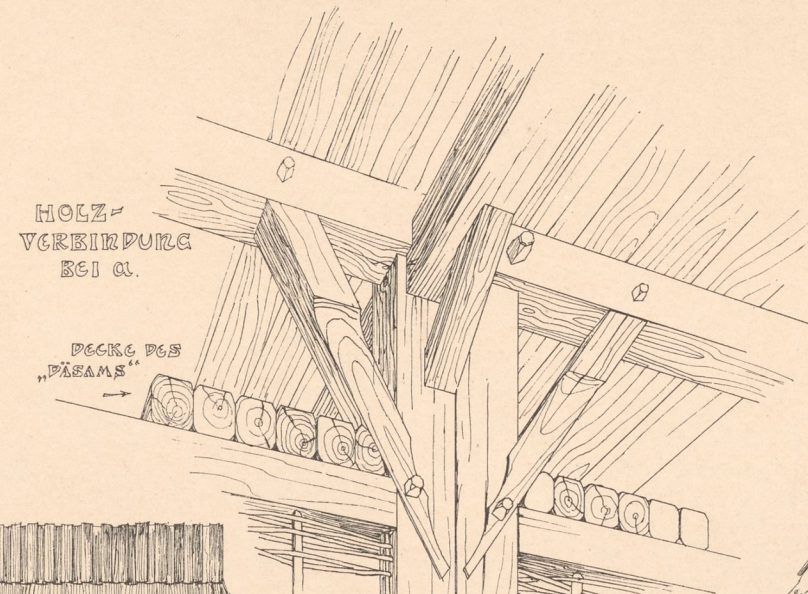
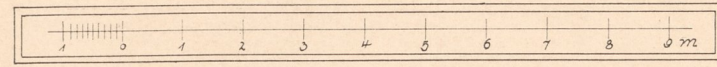




OBERSCHWABISCHES
BAUERNHAUS IN KÜRNACH
OA WALDSEE WTBG
AUFGEZ. & GEZ. VON F. EBLE STUTTG.



Inventar
Abt. E
Nr. 1204

Aufgen. u. gez. von F. Eble.

Verlag von Gerhard Kühtmann, Dresden.

Zinkhochätzung von Albert Frisch, Berlin W.

